

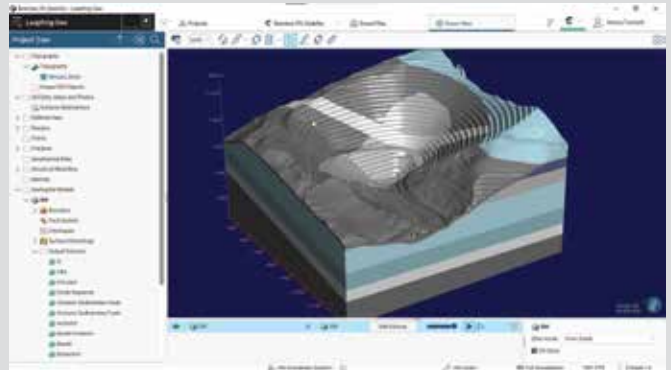
SLOPE3D

Seequent, the Bentley Subsurface Company, released SLOPE3D, an advanced slope stability analysis tool that empowers geotechnical engineers and engineering geologists to design safer slopes.

Building on the capabilities of GeoStudio's two-dimensional (2-D) SLOPE/W product, SLOPE3D is an intuitive limit equilibrium solution for analyzing rock and soil slopes in mining and civil projects—for example, hillslopes, open pit mines, and engineered structures such as dams and levees.

SLOPE3D connects directly with Seequent's geological modeling software, Leapfrog, via Seequent Central, and integrates with GeoStudio's SEEP3D. This creates a seamless workflow with smooth data exchange and simpler data management to improve project accuracy and outcomes.

—Seequent, www.seequent.com



Terra-Lok 24-120

NCFI's Terra-Lok™ 24-120 is a low-viscosity, permeable, and single-component hydrophobic polyurethane system. It can be used for increasing the load-bearing capacity of loosely bound soils, filling voids, and for eliminating water seepage through cracks in concrete structures.

Once the single-component polyurethane encounters moisture, it begins its chemical reaction and expands, permeating soil and filling voids and cracks.

—NCFI Geotechnical, www.ncfigeo.com



DAP Anchoring Adhesive

When applying anchoring adhesives, the most commonly observed errors are related to curing time. To solve this problem, DAP® Anchoring Adhesive provides a visual indicator. The product is a low-odor, styrene-free, two-component adhesive that is blue when applied and turns gray when it is fully cured, eliminating guesswork. The adhesive is suitable for horizontal and vertical application, provides a medium- to high-load strength, and has an extended working time of 15 minutes when applied at 50 to 68°F (10 to 20°C). The anchoring adhesive can be used for many applications, including installing awnings, balcony or stair railings, interior shelving, and racks. It is designed for use in uncracked concrete, hard natural stone, solid rock, and solid and hollow masonry.

—DAP Global Inc., www.dap.com



Products & Practice

LIGOS C 9375

Trinseo, a specialty material solutions provider, announced the North American launch of LIGOS™ C 9375, the company's first all-acrylic latex binder for building and construction applications. Specifically designed for cementitious applications, C 9375 offers exceptional strength, weatherability, and workability for high-alkaline applications. It can be used for various applications, such as hydraulic cement mixtures, exterior insulation and finishing systems (EIFS), cementitious repair mortars, decorative overlays, tile grout, and sprayable and patching mortars/stuccos.

—Trinseo, www.trinseo.com

Husqvarna Ulti-Grit Series

The Ulti-Grit™ segment incorporates Husqvarna's latest advances in controlled diamond distribution in floor saw blades. The new technology gives Ulti-Grit blades increased cutting speeds and longer blade life than previous designs.

The diamond distribution in Ulti-Grit segments has been designed to leave fewer gaps. With more diamonds exposed for longer, the operator gets an outstanding flat saw experience, with smooth cutting due to reduced vibration, enhanced service life, and optimized power consumption. And these blades offer consistent performance from the first cut and throughout the life of the blade. While the series consists of only three blades, it provides a wide application window for greater efficiency and convenience.

—Husqvarna, www.husqvarna.com



StairMaster Safety Treads

Wooster Products StairMaster® safety renovation treads provide sure footing on interior and exterior stairs and landings. They are offered in 9 or 11 in. (230 or 280 mm) widths and are available in many coordinating or contrasting colors, including photoluminescent, to enhance front edge visibility and safety. With a bonding process that ensures a long service life, this anti-slip tread can be used for many types of stairs and landing surfaces. StairMaster meets the 2015 International Fire Code (IFC) requirements and can be used for interior or exterior retrofit applications. With a heat-treated corrosion-resistant aluminum substrate and nearly diamond-hard aluminum oxide filler, the treads are guaranteed for 5 years. But they can last longer, even when subjected to heavy pedestrian traffic.

—Wooster Products, www.woosterproducts.com



EnviroMix SE

Chryso and GCP (Saint-Gobain Construction Chemicals), a provider in sustainable construction, launched EnviroMix® SE, a strength enhancer for concrete. EnviroMix SE is part of EnviroMix, a range of products and services designed to reduce and control the carbon footprint of concrete. EnviroMix SE is a strength enhancer for concrete that reduces the cement factor by approximately 10%, in addition to the water-reducing admixtures, while maintaining concrete quality and performance. It activates the hydration of cement and supplementary cementitious materials and enhances early- and late-age strengths, up to 1000 psi (7 MPa) in 1 day. In addition, EnviroMix SE is neutral to slump retention and other concrete characteristics and compatible with water-reducing admixtures. To meet the requirements of concrete producers, tailor-made formulations can be customized for materials and performance.

—Saint-Gobain Construction Chemicals, www.curbingco2atthesource.com

R3 Concrete Anchor

Werner, a provider of ladders and manufacturer of climbing products and fall protection equipment, announced the R3 Concrete Anchor. Designed for professionals working at heights who need to trust a safe, secure, and easy-to-install anchor, the R3 Concrete Anchor provides a strong connection point while working on concrete structures. Built with a rigid tri-wedge design and diamond-hard carbon coating, it provides the maximum strength, durability, and corrosion-resistant performance for all environments. The R3 Concrete Anchor incorporates an omnidirectional D-ring design that allows the connector to swivel and hinges in any direction to mitigate connector rollout. The concrete anchor keeps jobsites safe, is both OSHA- and ANSI-compliant, and is designed to work for a lifetime.

—Werner, www.werner.com



Products & Service Literature & Videos

StEER - Kahramanmaraş, Türkiye, Mw 7.8 Earthquake by the Structural Extreme Events Reconnaissance Network

The Structural Extreme Events Reconnaissance (StEER) Network issued a joint preliminary virtual reconnaissance report (PVRR), summarizing its findings on the impacts of the February 6, 2023, Kahramanmaraş, Turkey, Mw 7.8 Earthquake.

The objectives of this joint PVRR issued by the StEER Network and Earthquake Engineering Research Institute (EERI) Learning From Earthquakes (LFE) Program are to provide details of the February 6 Mw 7.8 and Mw 7.5 earthquakes; to describe local seismic codes and building construction practices; to compare the recorded ground shaking with the parameters used for design; to summarize the preliminary reports of damage to buildings and other infrastructure, including the disruption to the community in terms of fatalities, downtime, and economic losses; and to highlight key lessons learned, with recommendations to inform the continued study of this event by the engineering community.

—StEER Network, www.steer.network

Formwork & Accessories

EZ-Step Forming System

Deco-Crete's EZ-Step Forming System includes three radiused step forms that can be set up quickly and easily in under 5 minutes using the included hardware. Once the radius forms are attached to the wall brackets, the support bar holds the forms to height using only one forming stake for all three steps. The lightweight forms come with pre-attached rubber liners that are available in two different design options. The form liners can easily be changed from a broken rock texture to the cantilever option. The EZ-Step Forming System is made from durable materials that can withstand the weight of fresh concrete, and it is designed to be reused, making it a cost-effective option for projects.

—Deco-Crete, www.deco-cretesupply.com



BuildBlock HardWall Connector

BuildBlock Building Systems released an improvement to the BuildBlock HardWall System. This system uses BuildLock Knockdown Insulating Concrete Forms (ICFs) to create a concrete wall with an exterior layer of insulation. This system is commonly used in commercial applications where no flammable material may be present inside the structure.

The new BuildBlock HardWall Connector extends a BuildLock web bridge 2.5 in. (64 mm) to the edge of what is normally the interior layer of expanded polystyrene (EPS) foam. The BuildBlock HardWall Connector connects to any size of web bridge. The outer edge of the connector provides an attachment point for wood, cement board, or other suitable forming material. The end of the connector also contains a removable cap with a guide hole for screws. Once the wall is placed and the forming material is removed, the cap may be left in place as an attachment point for wall finishes or removed and the 1/2 in. (13 mm) hole filled with a patch or other material.

The HardWall Connector provides flexibility to finish the concrete wall. Additional insulation may be added when using ThermalSert sheets inside the wall cavity against the outside wall panel.

—BuildBlock Building Systems, www.buildblock.com



Hilti PLT 400

Hilti North America, a provider of innovative tools, technology, software, and services to the commercial construction industry, introduced the PLT 400, a digital layout tool designed to improve the productivity of jobsite layout crews.

With continued labor shortages and jobsite restrictions, single-operator tools like the PLT 400 are essential. Hilti's PLT tool technology allows the layout to be completed quickly, efficiently, and accurately. This tool includes advanced prism tracking and auto-calibration, and it requires minimal training to use.

The PLT 400 can be used to lay out projects directly from building information modeling (BIM) data, without the time-consuming need to create points on the plans first. It can also be used during the building process to help keep BIM models up to date, contributing to a highly efficient end-to-end workflow. Hilti's digital construction software is compatible with Revit, AutoCAD, and other professional layout platforms.

—Hilti, www.hilti.com



VAKKA Concrete Sensors

The VAKKA Concrete Sensor is a monitoring device that measures the internal temperature and relative humidity of newly placed concrete up to a depth of 3 m (10 ft). The sensor is durable and waterproof, and wirelessly monitors the environmental conditions within the concrete as it hardens. It features quick installation before concrete placement, immediate environmental stabilization, and the ability to instantly share data and generate environmental condition reports. The sensor meets both ASTM C1070, “Standard Test Method for Determining Particle Size Distribution of Alumina or Quartz by Laser Light Scattering,” and ASTM F2170, “Standard Test Method for Determining Relative Humidity in Concrete Floor Slabs Using in situ Probes.”

—Germann Instruments Inc., www.germanninstruments.com



Framax Xlife plus

With a new formwork system height of 3 m (10 ft) and only two tying levels required, the Framax Xlife plus product family can provide more economical forming. The enhanced product enables single-person operations, requires 12% fewer ties than similar systems, is operable from one side without the need for jacket tubes and cones, and enables fast anchoring. All elements are anchored in the center, which reduces the number of ties and creates a tie pattern suitable for exposed concrete projects. The Framax Xlife plus helps streamline construction projects and reduces costs.

Increased application versatility is supported by the integrated open functional profiles, as well as the attachment of add-on parts, such as brackets, panel struts, and wales. Framax Xlife plus is fully compatible with Framax Xlife formwork panels; both formwork systems use the same accessories, including lanyards, clamping rails, platforms, parking, and setting aids. The Framax Xlife plus system optimizes use and logistics for improved component management with integrated form tie nuts—simplifying and speeding-up assembly and disassembly. The large panels can be used in horizontal and vertical positions, allowing horizontal stacking with smaller panels. All panels are produced with hot-dip galvanized and powder-coated frames. This provides rust prevention, fast and easy cleaning, and a long life span.

—Doka, www.doka.com



PERI QuickSolve

PERI Formwork Systems, Inc., a manufacturer and supplier of formwork and scaffolding systems, released an enhanced edition of PERI QuickSolve. A free web-based planning tool, PERI QuickSolve empowers contractors and estimators to sketch out a project and identify the best wall formwork solutions based on the specific characteristics of that project.

With PERI QuickSolve, construction professionals can digitally draw concrete wall layouts and divide the concrete placements to match the project cycling plan. The tool generates a formwork design around the wall layout along with parts lists and three-dimensional (3-D) renderings.

Contractors and estimators can then export the two-dimensional (2-D) layouts and 3-D visualizations along with a list of exact parts required to save and share as documentation. The tool automatically delivers formwork solutions based on the customer's inventory or provides an optimal configuration proposal to purchase or rent PERI inventory. With the enhanced edition of PERI QuickSolve, customers can import their PERI formwork inventory into an Excel file and obtain an automatic evaluation of the formwork and accessories needed to complete a design. The update also makes it easier to draw walls at an angle to match the layout of a project more effectively.

—PERI, www.peri-usa.com

