



New Orleans Program

American Concrete Institute
1977 Fall Convention
October 16 - 21
Braniff Place Hotel



BOARD OF DIRECTION

President

RICHARD C. MIELENZ

Vice Presidents

JOHN L. GOETZ

JOHN F. McLAUGHLIN

Directors

WILLIAM D. CROMARTIE

EMERY FARKAS

RICHARD W. FURLONG

FRANCIS J. JACQUES

PAUL KLIEGER

JAMES R. LIBBY

ALAN H. MATTOCK

EDWARD O. PFRANG

CLARKSON W. PINKHAM

RAYMOND J. SCHUTZ

PETER SMITH

ROBERT E. TOBIN

Past Presidents

CHESTER P. SIESS

JOSEPH H. WALKER

RUSSELL S. FLING

Executive Director

GEORGE F. LEYH*

Deputy Executive Director

ROBERT E. WILDE*

* American Concrete Institute
P.O. Box 19150
Detroit, Michigan 48219

TECHNICAL ACTIVITIES COMMITTEE

JOHN E. BREEN, Chairman
SAMUEL J. HENRY, Secretary*
W. GENE CORLEY
RICHARD D. GAYNOR
T. E. NORTHUP
CHARLES J. PANKOW
EDWARD O. PFRANG
ROBERT E. PRICE
THOMAS J. READING
PETER SMITH
PAUL ZIA



EDUCATIONAL ACTIVITIES COMMITTEE

DENNIS T. SMITH, Chairman
GILBERT E. SEELEY, Secretary*
WILLIAM E. BREWER
CUTBERTO DIAZ-GOMEZ
EMERY FARKAS
EDWIN L. HEDSTROM
EDWARD L. KAWALA
BOYD C. RINGO

* American Concrete Institute
P.O. Box 19150
Detroit, Michigan 48219

FALL CONVENTION PROGRAM

October 16-21, 1977
New Orleans, Louisiana

Registration fees cover attendance at all ACI technical and educational committee meetings, general session, and symposia. They do **not** cover either the educational seminar or the workshop on Tuesday for which there is an extra charge.

Contents	Page
Schedule	2
Special events	4
Committee meetings	5
Floor plan of meeting rooms	17
Educational Seminar: Aggregates for Concrete	12
Concrete Technology and Construction	13
Educational Workshop: Wind Forces on Medium Rise Concrete Buildings	14
General Session	15
Standards Presentation	16
Student Activities Program	16
Research on Plain and Reinforced Concrete	21
Lessons from Structural Performance	22
Cedric Willson Symposium on Expansive Cement (first session)	23
Cedric Willson Symposium on Expansive Cement (second session)	24
Certification of Inspectors	25
Vibrations of Concrete Structures	26
Forum: Evaluating Strength of Structures in Service	27
Structural Design and Rehabilitation of Pavements	28
Symposium on Slump Loss	28
Practical Control of Cracking in Concrete Structures	29
Program for Family Members	32
Future ACI Conventions	33
1977 ACI Seminar Program	34
ACI New Orleans Convention Committee	37
Tennis and Golf Tournaments	31

SCHEDULE

SUNDAY, OCTOBER 16

8:30 a.m. - 6:00 p.m.
Administrative committee meetings

MONDAY, OCTOBER 17

8:30 a.m. - 10:00 p.m.
Administrative, technical, and educational committee meetings

TUESDAY, OCTOBER 18

8:30 a.m. - 10:00 p.m.
Administrative, technical, and educational committee meetings
9:00 a.m. - 5:30 p.m.
Seminar: Aggregates for Concrete (Committee E-701) (registration fees: \$40.00 Members; \$50.00 NonMembers; \$20 Students)
1:30 p.m. - 5:00 p.m.
Concrete Technology and Construction (ACI Louisiana Chapter)
2:00 p.m. - 6:00 p.m.
Workshop: Wind Forces on Medium-Rise Concrete Buildings (Committee E-702) (registration fees: \$20.00 Members; \$25.00 NonMembers; \$10.00 Students)

WEDNESDAY, OCTOBER 19

8:30 a.m. - 11:00 a.m.
General Session
11:00 a.m. - 12:00 noon
Standards Presentation
1:00 p.m. - 5:00 p.m.
Tennis and Golf Tournaments
2:00 p.m. - 6:00 p.m.
Technical and educational committee meetings
6:45 p.m. - 9:30 p.m.
Concrete Mixer - Cruise on the *Natchez*

THURSDAY, OCTOBER 20

8:30 a.m. - 10:00 p.m.
Administrative, technical, and educational committee meetings
9:00 a.m. - 12:00 noon
Student Activities Program (Educational Activities Committee)
9:00 a.m. - 12:00 noon
Research on Plain and Reinforced Concrete (Committee 115)
9:00 a.m. - 12:00 noon
Lessons from Structural Performance (Committee 348)
9:00 a.m. - 12:00 noon
Cedric Willson Symposium on Expansive Cement (Committee 223) (1st of 2 sessions)
2:00 p.m. - 5:00 p.m.
Cedric Willson Symposium on Expansive Cement (Committee 223) (2nd of 2 sessions)
2:00 p.m. - 5:00 p.m.
Certification of Inspectors (Committee 311)
2:00 p.m. - 5:00 p.m.
Vibrations of Concrete Structures (Committee 435)
7:00 p.m. - 10:00 p.m.
Forum: Evaluating Strength of Structures in Service (Committees 114 and 437)

FRIDAY, OCTOBER 21

8:30 a.m. - 11:30 a.m.
Structural Design and Rehabilitation of Pavements (Committee 325)
8:30 a.m. - 12:30 p.m.
Technical committee meetings
9:00 a.m. - 12:00 noon
Symposium on Slump Loss (Ad Hoc Committee on Slump Loss)
9:00 a.m. - 12:00 noon
Practical Control of Cracking in Concrete Structures (Committee 224)

SPECIAL EVENTS

Publications Display . . . on the Upper Mezzanine all week. See the latest ACI publications now available. Orders are taken at the Registration Desk which is also on the Upper Mezzanine.

Treasures of Tutankhamun . . . Monday. A visit to the Museum of Art to see the magnificent treasures of King Tut has been scheduled for this evening. Tickets are \$6.50 each and are limited. Buses will leave promptly at 6:45 p.m. and return transportation will be provided.

Film Presentation . . . Tuesday, 8:30 a.m. - 12:30 p.m., in the Imperial Salon. Committee 506, Shotcreting, will incorporate two movies as part of their meeting. The first is on the "New Austrian Tunneling Method;" the other will report on the nozzleman certification program conducted by the Guniting Contractors Association. Visitors are invited to attend.

Education at the Convention . . . Two half-day programs and one full-day seminar are being presented. Each requires a separate registration fee. Since enrollment is limited, early registration is advised.

Seminar: Aggregates for Concrete . . . Tuesday, 9:00 a.m. - 5:30 p.m., in Terrace Suite #1. Participants will be aided in evaluating properties of aggregates in terms of their influence on the properties of concrete. Lunch is included in the registration fee.

Workshop: Wind Forces on Medium-Rise Concrete Buildings . . . Tuesday, 2:00 p.m. - 6:00 p.m., in Terrace Suite #2. This workshop will deal with both theory and practical application in the study of these forces.

Student Activities Program . . . Thursday, 9:00 a.m. - 12:00 noon, in the Presidential Salon. This program is a must for those students who are currently studying concrete in design and construction.

Concrete Mixer . . . Wednesday, 7:30 p.m. - 9:30 p.m. This traditional affair will be held on the *Natchez* which is the largest all-steel sternwheeler built in the United States in this century. The cruise will last for two hours and buses will leave the hotel for the dock at 6:45 p.m. sharp! Please wear your badge and don't forget your ticket.

Special Tours . . . have been planned. Be sure to check the Family Members' program in the back of this booklet for tours of interest to you. There will be at least one and probably several. Don't miss them!

COMMITTEE MEETINGS

Be sure to check the bulletin board for last minute changes or added meetings.

COMMITTEE SUNDAY

OCTOBER 16

	Meeting Room
— Technical Activities Committee Subgroup	8:30 a.m. - 12:30 p.m. Meeting Room 4
— Technical Activities Committee Subgroup	Meeting Room 5
— Technical Activities Committee Subgroup	Meeting Room 10
— Technical Activities Committee	2:00 p.m. - 6:00 p.m. Meeting Room 10

MONDAY

OCTOBER 17

	Meeting Room
— Technical Activities Committee	8:30 a.m. - 10:30 a.m. Hall of Americas, North Hall
— Educational Activities Committee	Cabaret Room
210 Erosion of Concrete in Hydraulic Structures	Royal Salon
211 SUBCOMMITTEE 7, Mass Concrete Mixture Proportioning	Cabaret Room
303 Architectural Concrete	Meeting Room 6
309 Consolidation of Concrete	Presidential Salon
318 Subcommittee B, Concrete Quality, Mixing, and Placement	Meeting Room 4
318 Subcommittee I, Slab Systems	Meeting Room 9
318 Subcommittee J, Footings	Meeting Room 5
344 Circular Prestressed Concrete Structures	Meeting Room 10
351 Foundations for Equipment and Machinery	Imperial Salon
352 Joints and Connections in Monolithic Concrete Structures	Hall of Americas, North Hall
428 Limit Design	Meeting Room 2
444 Models of Concrete Structures	Tulane Room
515 Coatings for Concrete	Terrace Suite 2
531 Masonry Structures	Terrace Suite 1
533 Precast Panels	Imperial Salon
544 Fiber Reinforced Concrete	Tulane Room
— Technical Activities Committee	10:30 a.m. - 12:30 p.m. Hall of Americas, North Hall
— Educational Activities Committee	Cabaret Room
— Institute and Industry Advancement	Meeting Room 8
121 Quality Assurance Systems for Concrete	Royal Salon
211 Proportioning Concrete Mixes	Cabaret Room
223 Expansive Cement Concrete	Presidential Salon
303 Architectural Concrete	Meeting Room 6
308 Curing Concrete	Royal Salon
309 Consolidation of Concrete	Presidential Salon
318 Subcommittee B, Concrete Quality, Mixing, and Placement	Meeting Room 4
318 Subcommittee I, Slab Systems	Meeting Room 9

318	Subcommittee J, Footings	Meeting Room 5
344	Circular Prestressed Concrete Structures	Meeting Room 10
351	Foundations for Equipment and Machinery	Imperial Salon
352	Joints and Connections in Monolithic Concrete Structures	Hall of Americas, North Hall
428	Limit Design	Meeting Room 2
444	Models of Concrete Structures	Tulane Room
515	Coatings for Concrete	Terrace Suite 2
531	Masonry Structures	Terrace Suite 1
533	Precast Panels	Imperial Salon
544	Fiber Reinforced Concrete	Tulane Room

2:00 p.m. - 4:00 p.m.

—	Technical Activities Committee	Hall of Americas, North Hall
—	Educational Activities Committee	Cabaret Room
—	International Activities Committee	Hall of Americas, North Hall
—	Board Committee on Metrication	Meeting Room 2
116	Nomenclature	Presidential Salon
117	Tolerances	Meeting Room 6
224	Cracking	Imperial Salon
301	Specifications for Structural Concrete	Royal Salon
315	Details of Concrete Reinforcement	Royal Salon
318	Subcommittee A, General Building Code	Meeting Room 3
318	Subcommittee C, Formwork, Embedded Pipes, and Construction Joints	Meeting Room 4
318	Subcommittee E, Analysis and Strength Requirements	Meeting Room 9
318	Subcommittee M, Shells and Folded Plates	Meeting Room 5
332	Residential Concrete Work	Presidential Salon
344	Circular Prestressed Concrete Structures	Meeting Room 10
351	Foundations for Equipment and Machinery	Imperial Salon
421	Design of Reinforced Concrete Slabs	Cabaret Room
442	Response of Buildings to Lateral Forces	Tulane Room
515	Coatings for Concrete	Terrace Suite 2
531	Masonry Structures	Terrace Suite 1
544	Fiber Reinforced Concrete	Tulane Room

4:00 p.m. - 6:00 p.m.

—	Technical Activities Committee	Hall of Americas, North Hall
—	Educational Activities Committee	Cabaret Room
117	Tolerances	Meeting Room 6
214	Evaluation of Results of Tests Used to Determine the Strength of Concrete	Meeting Room 8
224	Cracking	Imperial Salon
301	Specifications for Structural Concrete	Royal Salon
315	Details of Concrete Reinforcement	Royal Salon
318	Subcommittee A, General Building Code	Meeting Room 3
318	Subcommittee C, Formwork, Embedded Pipes, and Construction Joints	Meeting Room 4
318	Subcommittee E, Analysis and Strength Requirements	Meeting Room 9
318	Subcommittee M, Shells and Folded Plates	Meeting Room 5

332	Residential Concrete Work	Presidential Salon
351	Foundations for Equipment and Machinery	Imperial Salon
408	Bond and Development of Reinforcement	Meeting Room 10
421	Design of Reinforced Concrete Slabs	Cabaret Room
442	Response of Buildings to Lateral Forces	Tulane Room
515	Coatings for Concrete	Terrace Suite 2
531	Masonry Structures	Terrace Suite 1
543	Concrete Piles	Meeting Room 2
544	Fiber Reinforced Concrete	Tulane Room
E-701	Materials for Concrete Construction	Presidential Salon

7:30 p.m. - 9:30 p.m.

302	Construction of Concrete Floors	Meeting Room 7
318	Subcommittee D, Details and Development of Reinforcement	Meeting Room 3
318	Subcommittee G, Flexure and Axial Loads	Meeting Room 4
318	Subcommittee L, Prestressed Concrete	Meeting Room 5
318	Task Group on Code Simplification	Meeting Room 2
512	Precast Structural Concrete	Meeting Room 8
517	Accelerated Curing of Concrete at Atmospheric Pressure	Meeting Room 9

TUESDAY

OCTOBER 18

8:30 a.m. - 10:30 a.m.

—	Chapter Activities Committee	Hall of Americas, North Hall
—	Convention Committee	Tulane Room
—	Ad Hoc Committee on Publications Policies	Meeting Room 6
311	Inspection of Concrete	Tulane Room
318	Subcommittee F, Serviceability	Meeting Room 5
318	Subcommittee H, Shear and Torsion	Meeting Room 2
318	Subcommittee K, Precast and Composite Concrete	Meeting Room 9
318	Subcommittee N, Earthquake Resistant Design Requirements	Royal Salon
318	Task Group on AISC-AISI	Meeting Room 3
318	Task Group on Composite Construction	Meeting Room 4
318	Task Group on Performance Code Concept	Presidential Salon
318	Task Group on Plain Concrete	Meeting Room 8
318	Task Group on Progressive Collapse	Meeting Room 7
340	Strength Design Handbook	Presidential Salon
347	Formwork for Concrete	Imperial Salon
357	Offshore Concrete Structures	Meeting Room 10
504	Joint Sealants	Terrace Suite 2
506	Shotcreting	Imperial Salon
E-702	Designing Concrete Structures	Royal Salon

9:00 a.m. - 5:30 p.m.

SEMINAR: AGGREGATES FOR CONCRETE (Sponsored by ACI Committee E-701) See page 12 Terrace Suite 1

10:30 a.m. - 12:30 p.m.

—	Chapter Activities Committee	Hall of Americas, North Hall
—	Convention Committee	Tulane Room

—	Ad Hoc Committee on Publications Policies	Meeting Room 6
212	Admixtures	Royal Salon
311	Inspection of Concrete	Tulane Room
318	Subcommittee F , Serviceability	Meeting Room 5
318	Subcommittee H , Shear and Torsion	Meeting Room 2
318	Subcommittee K , Precast and Composite Concrete	Meeting Room 9
318	Subcommittee N , Earthquake Resistant Design Requirements	Royal Salon
318	Task Group on AISC-AISI	Meeting Room 3
318	Task Group on Composite Construction	Meeting Room 4
318	Task Group on Performance Code Concept	Presidential Salon
318	Task Group on Plain Concrete	Meeting Room 8
318	Task Group on Progressive Collapse	Meeting Room 7
340	Strength Design Handbook	Presidential Salon
347	Formwork for Concrete	Imperial Salon
357	Offshore Concrete Structures	Meeting Room 10
506	Shotcreting	Imperial Salon
549	Ferrocement	Terrace Suite 2

1:30 p.m. - 5:00 p.m.

CONCRETE TECHNOLOGY AND CONSTRUCTION

(Sponsored by ACI Louisiana Chapter)

See Page 13

Presidential Salon

—	Planning Committee	Hall of Americas, North Hall
—	Specifications Review Committee	Meeting Room 5
118	Use of Computers	Meeting Room 9
201	Durability of Concrete	Tulane Room
207	Mass Concrete	Royal Salon
311	Inspection of Concrete	Tulane Room
318	Standard Building Code	Imperial Salon
355	Anchorage to Concrete	Meeting Room 8
356	Industrialized Concrete Construction	Meeting Room 2
357	Offshore Concrete Structures	Meeting Room 10
358	Concrete Guideways	Meeting Room 7
426	Shear and Diagonal Tension (with Committee 438)	Royal Salon
435	Deflection of Concrete Building Structures	Meeting Room 3
438	Torsion (with Committee 426)	Royal Salon
516	High Pressure Steam Curing	Meeting Room 4
549	Ferrocement	Meeting Room 6

2:00 p.m. - 6:00 p.m.

WORKSHOP: WIND FORCES ON MEDIUM-RISE

CONCRETE BUILDINGS (Sponsored by ACI

Committee E-702) See Page 14

Terrace Suite 2

—	Specifications Review Committee	Meeting Room 5
118	Use of Computers	Meeting Room 9
201	Durability of Concrete	Tulane Room
207	Mass Concrete	Royal Salon
210	Erosion of Concrete in Hydraulic Structures	Hall of Americas, North Hall
311	Inspection of Concrete	Tulane Room

318	Standard Building Code	Imperial Salon
345	Concrete Bridge Construction and Maintenance	Meeting Room 6
355	Anchorage to Concrete	Meeting Room 8
356	Industrialized Concrete Construction	Meeting Room 2
357	Offshore Concrete Structures	Meeting Room 10
358	Concrete Guideways	Meeting Room 7
426	Shear and Diagonal Tension (with Committee 438)	Royal Salon
435	Deflection of Concrete Building Structures	Meeting Room 3
438	Torsion (with Committee 426)	Royal Salon
516	High Pressure Steam Curing	Meeting Room 4
		7:30 p.m. - 9:30 p.m.
118	Use of Computers	Meeting Room 9
213	Lightweight Aggregates and Lightweight Aggregate Concrete	Meeting Room 10
318	Standard Building Code	Imperial Salon
348	Subcommittee , Philosophy of Safety	Meeting Room 6

WEDNESDAY

OCTOBER 19

8:30 a.m. - 11:00 a.m.

GENERAL SESSION See Page 14

Tulane Room

11:00 a.m. - 12:00 noon

STANDARDS PRESENTATION See Page 16

Imperial Salon

1:00 p.m. - 5:00 p.m.

Tennis and Golf Tournaments See Page 31

2:00 p.m. - 4:00 p.m.

114	Research and Development (starts 2:30 p.m.)	Meeting Room 4
120	History of Concrete	Meeting Room 5
209	Subcommittee V (Creep and Shrinkage in Concrete)	Terrace Suite 2
307	Reinforced Concrete Chimneys	Meeting Room 9
318	Standard Building Code	Imperial Salon
325	Concrete Pavements	Meeting Room 6
336	Combined Footings and Pier Foundations	Meeting Room 10
348	Structural Safety	Tulane Room
349	Concrete Nuclear Structures	Meeting Room 2
423	Prestressed Concrete	Meeting Room 3
439	Steel Reinforcement	Meeting Room 8
546	Repair of Concrete	Meeting Room 7
548	Polymers in Concrete	Terrace Suite 1
E-601	Seminars and Workshops	Tulane Room

4:00 p.m. - 6:00 p.m.

209	Creep and Shrinkage in Concrete	Terrace Suite 2
215	Fatigue of Concrete	Meeting Room 5
304	Measuring, Mixing, Transporting, and Placing Concrete	Meeting Room 4
307	Reinforced Concrete Chimneys	Meeting Room 9
318	Standard Building Code	Imperial Salon
336	Combined Footings and Pier Foundations	Meeting Room 10

346	Structural Safety	Tulane Room
349	Concrete Nuclear Structures	Meeting Room 2
423	Prestressed Concrete	Meeting Room 3
439	Steel Reinforcement	Meeting Room 8
532	Concrete Masonry	Meeting Room 6
546	Repair of Concrete	Meeting Room 7
548	Polymers in Concrete	Terrace Suite 1
E-601	Seminars and Workshops	Tulane Room

THURSDAY

OCTOBER 20

		8:30 a.m. - 10:30 a.m.
221	Aggregates	Meeting Room 5
306	Cold Weather Concreting	Meeting Room 3
349	Concrete Nuclear Structures	Meeting Room 2
360	Design of Slabs on Grade	Meeting Room 7
443	Concrete Bridge Design	Meeting Room 9
503	Adhesives for Concrete	Meeting Room 6
523	Insulating and Cellular Concretes	Hall of Americas, North Hall
547	Refractory Concrete	Meeting Room 4

9:00 a.m. - 12:00 noon

STUDENT ACTIVITIES PROGRAM (Sponsored by
ACI Educational Activities Committee)
See Page 16 Presidential Salon

RESEARCH ON PLAIN AND REINFORCED CONCRETE
(Sponsored by ACI Committee 115) See
Page 21 Imperial Salon

LESSONS FROM STRUCTURAL PERFORMANCE
(Sponsored by ACI Committee 348) See
Page 22 Tulane Room

**CEDRIC WILLSON SYMPOSIUM ON EXPANSIVE
CEMENT** (Sponsored by ACI Committee 223)
(first session) See Page 23 Royal Salon

— **Board of Direction** Meeting Room 10

		10:30 a.m. - 12:30 p.m.
306	Cold Weather Concreting	Meeting Room 3

NOTES

349	Concrete Nuclear Structures	Meeting Room 2
360	Design of Slabs on Grade	Meeting Room 7
443	Concrete Bridge Design	Meeting Room 9
503	Adhesives for Concrete	Meeting Room 6
523	Insulating and Cellular Concretes	Hall of Americas, North Hall
547	Refractory Concrete	Meeting Room 4
E-703	Concrete Construction Practices	Meeting Room 5

2:00 p.m. - 4:00 p.m.

216	Fire Resistance and Fire Protection of Structures	Hall Americas, North Hall
222	Corrosion of Metals in Concrete	Meeting Room 8
225	Hydraulic Cements	Meeting Room 3
305	Hot Weather Concreting	Meeting Room 7
349	Concrete Nuclear Structures	Meeting Room 2
437	Strength Evaluation of Existing Concrete Structures	Meeting Room 6
547	Refractory Concrete	Meeting Room 4
E-801	Student Concrete Projects	Meeting Room 5

2:00 p.m. - 5:00 p.m.

CEDRIC WILLSON SYMPOSIUM ON EXPANSIVE

CEMENT (Sponsored by ACI Committee 223)
(second session) See Page 24 Royal Salon

CERTIFICATION OF INSPECTORS (Sponsored by
ACI Committee 311) See Page 25 Imperial Salon

VIBRATIONS OF CONCRETE STRUCTURES
(Sponsored by ACI Committee 435) See
Page 26 Tulane Room

— **Board of Direction** Meeting Room 10

4:00 p.m. - 6:00 p.m.

115	Current Research	Meeting Room 9
120	History of Concrete	Meeting Room 6
225	Hydraulic Cements	Meeting Room 3
349	Concrete Nuclear Structures	Meeting Room 2
547	Refractory Concrete	Meeting Room 4
E-801	Student Concrete Projects	Meeting Room 5

7:00 p.m. - 10:00 p.m.

FORUM: NEEDED RESEARCH AND DEVELOPMENT FOR EVALUATING THE STRENGTH OF EXISTING

CONCRETE STRUCTURES (Sponsored by ACI
Committee 114 in cooperation with ACI
Committee 437) See Page 27 Presidential Salon

FRIDAY

OCTOBER 21

		8:30 a.m. - 10:30 a.m.
—	Standards Board	Meeting Room 7
350	Sanitary Engineering Structures	Meeting Room 6

8:30 a.m. - 11:30 a.m.

STRUCTURAL DESIGN AND REHABILITATION OF PAVEMENTS

(Sponsored by ACI Committee 325)
See Page 28 Presidential Salon

9:00 a.m. - 12:00 noon

SYMPOSIUM ON SLUMP LOSS (Sponsored by Ad
Hoc Committee on Slump Loss) See
Page 28 Imperial Salon

**PRACTICAL CONTROL OF CRACKING IN
CONCRETE STRUCTURES** (Sponsored by ACI
Committee 224) See Page 29 Royal Salon

10:30 a.m. - 12:30 p.m.

350	Sanitary Engineering Structures	Meeting Room 6
-----	---------------------------------	----------------

Tuesday, October 18

9:00 a.m. - 12:00 noon;

1:30 p.m. - 5:30 p.m.

SEMINAR: AGGREGATES FOR CONCRETE

sponsored by ACI Committee E701

Terrace Suite 1

The important role of aggregates in concrete is often overlooked. If you are a producer, specifier, constructor, or contractor, this seminar has something for you. Come prepared to discuss your aggregate problems with the seminar faculty and other participants.

NOTE: A separate registration fee is charged for this seminar of \$40 for ACI Members, \$50 for nonMembers, and \$20 for students. Lunch is included in this fee and, since enrollment is limited, early registration is advised.

PROGRAM

Moderator: R. W. Kriner, chairman, Committee E-701, and manager of technical services, Lehigh Portland Cement Company, Allentown, Pennsylvania

Basic Characteristics and Tests of Aggregates

Ward R. Malisch, associate professor of civil engineering, University of Missouri-Rolla, Rolla, Missouri

Grading: maximum size, fineness modulus, absorption, standard test methods will be described as well as effects of aggregate characteristics upon concrete.

Specifications for Grading and Quality of Aggregates

Frank P. Nichols, Jr., vice-president, engineering, National Crushed Stone Association, Washington, D. C.

Emphasis will be on the specifications contained in ASTM C33-74 and identifying why the specification is important.

Lunch

Practical Aspects of Selection and Using Aggregate in Concrete

Richard C. Meininger, assistant director of engineering, National Ready Mixed Concrete Association, Silver Spring, Maryland

Properties of normal weight aggregates as they affect concrete performance will be discussed.

Plant Production Control of Construction Aggregates

John T. Molnar, manager, Materials Control and Research, Standard Slag Company, Youngstown, Ohio

Organization of a quality control program, use of control charts, and use of test data will be discussed.

Meeting Concrete Specifications Using Lightweight Aggregates

Thomas A. Holm, director of engineering, Solite Corporation, West New York, New Jersey

Types of lightweight aggregate and their basic differences. Design of structural lightweight concrete. Quality control. Job considerations.

Tuesday, October 18

1:30 p.m. - 5:00 p.m.

CONCRETE TECHNOLOGY AND CONSTRUCTION

sponsored by ACI Louisiana Chapter

Presidential Salon

Session Chairman: James P. Schwartz, Jr., vice-president, Louisiana Chapter, ACI, and Manager, Quality Control Department, Jimco, Inc., Metairie, Louisiana

The History of Concrete in the Drainage System of the City of New Orleans

G. Joseph Sullivan, superintendent, Sewerage and Water Board, City of New Orleans, Louisiana

The Extensive Use of Prestressed Concrete Piling in the Gulf South Area

Donald Payne, Marine Concrete Structures, Metairie, Louisiana

Floor Slab Curing — Critical But Often Neglected

William S. Phelan, The Euclid Chemical Company, Woodbridge, New Jersey

Superplasticizers

Greg Bobrowski, technical manager, American Admixtures Corporation, Chicago, Illinois

A Close Look at the Cusum Method of Controlling Concrete Strength

James P. Schwartz, Jr., session chairman

Tuesday, October 18
2:00 p.m. - 6:00 p.m.

WORKSHOP: WIND FORCES ON MEDIUM-RISE CONCRETE BUILDINGS

sponsored by ACI Committee E-702

Terrace Suite 2

Workshop Chairman: Kenneth H. Murray, assistant dean of engineering, School of Engineering, Old Dominion University, Norfolk, Virginia

Instructors: Edward R. Morphy, partner, Morphy, Makofsky and Masson, New Orleans, Louisiana
Herbert J. Roussel, Jr., president, Roussel Engineering, Inc., Metairie, Louisiana
Saad E. Moustafa, associate professor, University of New Orleans, New Orleans, Louisiana

PLAN

The workshop will be divided into two major parts: Theoretical treatment and application example. The theoretical treatment will cover literature survey, nature of wind, lateral force resisting systems, approximate versus exact analysis and codes. The discussion will be limited to concrete buildings in the range of 8 to 20 stories.

NOTE: A separate registration fee is charged for this workshop of \$20 for ACI Members, \$25 for nonMembers, and \$10 for students. Since enrollment is limited, early registration is advised.

Wednesday, October 19
8:30 a.m. - 11:00 a.m.

GENERAL SESSION

Tulane Room

Session Chairman: William B. Haensel, Jr., general chairman, 1977 Fall ACI Convention, and general manager, Technical Inspection and Control Corporation, New Orleans, Louisiana

Welcome

Charles Grisbaum, Jr., Representative, Louisiana State Legislature, Baton Rouge, and partner, Grisbaum and Kleptner, Metairie, Louisiana



Keynote Address: Energy Update - '77

E. F. Loveland, vice-president, Consumer Affairs, Shell Oil Company, Houston, Texas



Raymond E. Davis Lecture: "The Wisdom of the Structure"

Halvard W. Birkeland, senior vice-president, ABAM Engineers, Inc., Tacoma, Washington

1978 Annual ACI Convention Preview

John A. Bickley, general chairman, 1978 Annual ACI Convention, vice-president, Trow Group Ltd., and general manager, Concrete Technology Division, Rexdale, Ontario

Acknowledgment of Chapter Officers

ACI Business*

*The presentation and discussion of Standards will be held in the Imperial Salon beginning at 11:00 A.M.

Wednesday, October 19
11:00 a.m. - 12:00 noon

STANDARDS PRESENTATION

Imperial Salon

Session Chairman: Richard C. Mielenz, President, ACI, and vice-president, Research and Development, Master Builders, Cleveland, Ohio

Proposed Revision to ACI Standard 347-68, "Recommended Practice for Concrete Formwork"

Peter D. Courtois, chairman, ACI Committee 347, and vice-president, Corporate Development, Superior Concrete Accessories, Inc., San Diego, California

Proposed Revisions to Section 9.5 of "Code Requirements for Nuclear Safety Related Concrete Structures (ACI 349-76)"

Richard S. Orr, chairman, ACI Committee 349, and chief engineer, Structural Engineering, Offshore Power Systems, Jacksonville, Florida

Thursday, October 20
9:00 a.m. - 12:00 noon

STUDENT ACTIVITIES PROGRAM

sponsored by ACI Educational Activities Committee

Presidential Salon

Session Chairman: Dennis T. Smith, chairman, ACI Educational Activities Committee, and technical services manager, Marquette Cement Manufacturing Company, Nashville, Tennessee

Welcome

Dennis T. Smith, session chairman

The American Concrete Institute in Continuing Education

William J. Wilhelm, chairman, ACI Committee E-702, and chairman, Department of Civil Engineering, West Virginia University, Morgantown, West Virginia

Getting Acquainted with ACI

Clyde E. Kesler, professor of civil engineering, University of Illinois at Urbana-Champaign, Urbana, Illinois

Discussion

Do Concrete Slabs on Grade Require Engineering Design?

Boyd C. Ringo, professor, Department of Civil and Environmental Engineering, University of Cincinnati, Cincinnati, Ohio

Failure Investigations and Innovative Approaches to Repair of Reinforced Concrete Structures

Russell S. Fling, president, R. S. Fling & Partners, Inc., Columbus, Ohio

Discussion

Closing Remarks

Dennis T. Smith, session chairman

Lower & Upper Mezzanine

VILLERE STREET

Tulane Room

Meeting Room No. 1

Upper Mezzanine & Second Floor

VILLERE STREET

Imperial Salon

Royal Salon

Presidential Salon

Elevators

Bar

Lounge

Escalators

Stairs

Elevators

Meeting Room No. 9

Meeting Room No. 10

Meeting Room No. 2

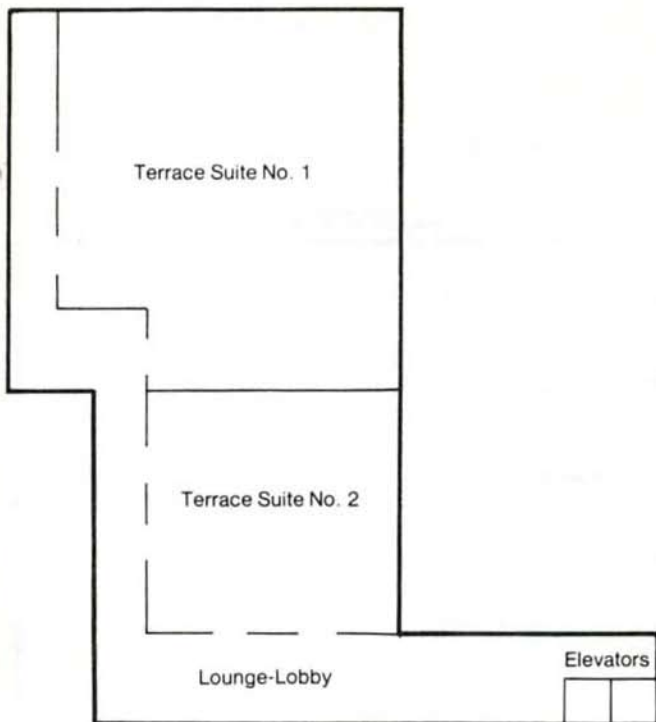
Meeting Room No. 6	Meeting Room No. 7	Meeting Room No. 8
--------------------	--------------------	--------------------

Meeting Room No. 3

Meeting Room No. 4

Meeting Room No. 5

Sixth Floor



North Hall on Ground Floor

Thursday, October 20
9:00 a.m. - 12:00 noon

RESEARCH ON PLAIN AND REINFORCED CONCRETE

(Brief and confidential unpublished reports)
sponsored by ACI Committee 115

Imperial Salon

Session Chairman: Boris Bresler, chairman, ACI Committee 115, and professor, Department of Civil Engineering, University of California, Berkeley, California

Secretary: M. A. Ward, secretary, ACI Committee 115, and professor, Department of Civil Engineering, University of Calgary, Calgary, Alberta

Tension Lap Splices Under Severe Load Reversals

J. D. Aristizabal and A. E. Fiorato, Portland Cement Association, Skokie, Illinois

Sea-Water Concrete Study

Leon Nadolski, Peter K. Frobenius, and Denis Chuen Pu, Bechtel, Inc., San Francisco, California

Concrete Reinforced with Typar Spunbonded Fabric

S. Sands, E. I. Du Pont de Nemours & Company, Wilmington, Delaware

Limit Design of Slab-Column Joints to Resist Horizontal Forces in Flat Slab Buildings

Hans Gesund, University of Kentucky, Lexington, Kentucky

Effect of Cement Types on the Accelerated Compressive and Modified Cube Strengths of Concrete

Tarun R. Naik and Anthony E. L. Appiah, University of Wisconsin-Milwaukee, Milwaukee, Wisconsin

A Comparative Evaluation of Concrete Reinforced With Straight Steel Fibers and Collated Fibers With Deformed Ends
V. Ramakrishnan, Terje Brandshaugh, W. V. Coyle, and Ernest K. Schrader, South Dakota School of Mines and Technology, Rapid City, South Dakota

Prediction of Fatigue Properties for Ferrocement and Reinforced Concrete Beams

P. Balaguru, A. E. Naaman, and S. P. Shah, University of Illinois at Chicago Circle, Chicago, Illinois

Behavior of Headed Stud Connections for Precast Concrete Panels Under Reversed Cyclic Shear Loading

R. A. Spencer, D. S. Neille, and M. Bischof, University of British Columbia, Vancouver, British Columbia

Optimum Design of Reinforced Concrete Slabs

A. B. I. Khalil and R. E. Loov, University of Calgary, Calgary, Alberta

Observations of Concrete Creep During Regimes of Drying and Wetting

B. R. Gamble and L. J. Parrott, University of Calgary, Calgary, Alberta

Thursday, October 20
9:00 a.m. - 12:00 noon

LESSONS FROM STRUCTURAL PERFORMANCE

sponsored by ACI Committee 348

Tulane Room

Session Co-Chairmen: Robert G. Drysdale, associate professor, Department of Civil Engineering, McMaster University, Hamilton, Ontario
and
David E. Allen, research officer, Division of Building Research, National Research Council of Canada, Ottawa, Ontario

Introduction

Robert G. Sexsmith, chairman, ACI Committee 348, and research scientist, Western Forest Products Laboratory, Canadian Forestry Service, Vancouver, British Columbia

ACI Error Survey

John Fraczek, School of Civil Engineering, Purdue University, West Lafayette, Indiana

Lessons from European Failures

Roger Hauser, principal, HAWAG Consulting engineers, Bern, Switzerland

Learning Structures Through Field Observations

Dong W. Lee, chief structural engineer, Midwest Technical Inc., Cincinnati, Ohio

Lessons from Structural Performance: Slabs Containing Improperly Placed Reinforcing

Denis Mitchell, assistant professor; Yoon M. Lee, research assistant; and Philip J. Harris, professor, Department of Civil Engineering and Applied Mechanics, McGill University, Montreal, Quebec

Causes of Deterioration in Concrete Structures

John M. Hanson, Wiss, Janney, Elstner and Associates, Inc., Northbrook, Illinois

Performance of Reinforced Concrete Buildings in the March 1977 Romanian Earthquake

Vedat Yerlici, professor and dean of engineering, Bogazici University, Istanbul, Turkey

ASCE Activities on Performance of Structures

Neal FitzSimons, chairman, ASCE Committee on Damaged and Failed Structures, and Wiss, Janney, Elstner and Associates Inc., Kensington, Maryland

Discussion

Thursday, October 20
9:00 a.m. - 12:00 noon

CEDRIC WILLSON SYMPOSIUM ON EXPANSIVE CEMENT

sponsored by ACI Committee 223

Royal Salon

Session Chairman: William P. Liljestrom, president, Chemically Prestressed Concrete Corporation, Los Angeles, California

Session I

The Future of Expansive Cement

Bryant Mather, chief, Concrete Laboratory, U. S. Army Engineer Waterways Experiment Station, Vicksburg, Mississippi

Hydraulic Structures Designed with Shrinkage-Compensating Concrete

Joe V. Williams, Jr., architectural marketing manager, Cement Division, Texas Industries, Arlington, Texas

Utilization of Shrinkage-Compensating Concrete — A Cold Storage Warehouse Application

Charles A. Gaskill, engineer, Wold, Bowers, DeShane, Cover, Inc.; and Richard C. Jacobs, technical service engineer, Penn-Dixie Industries, Inc., Grand Rapids, Michigan

Use of Shrinkage-Compensating Cement Concrete in the Dallas Municipal Center

Jack Rosenlund, principal, Rosenlund and Company, Dallas, Texas

Expansive Cement Concretes in Japan

Masatane Kokubu, professor, Musashi Institute of Technology, Tamazutsumi, Setagaya-ku, Tokyo, Japan; and Shigeyoshi Nagataki, associate professor, Tokyo Institute of Technology, Ookayama, Meguro-ku, Tokyo, Japan

Performance of Shrinkage-Compensating Concretes in Slabs

Henry G. Russell, manager, Structural Development Section, Portland Cement Association, Skokie, Illinois

Effects of Tidal Exposure on Concrete Made with Shrinkage-Compensating Cement

G. B. Moore, research manager, Southwestern Portland Cement Company, Victorville, California

Expansion-Shrinkage, Creep, and Elastic Modulus of Shrinkage-Compensating Gap-Graded Concrete

Shu-t'ien Li, professor emeritus, Orange, California; and V. Ramakrishnan, professor of civil engineering, South Dakota School of Mines and Technology, Rapid City, South Dakota

Thursday, October 20
2:00 p.m. - 5:00 p.m.

CEDRIC WILLSON SYMPOSIUM ON ON EXPANSIVE CEMENT

sponsored by ACI Committee 223

Royal Salon

Session Chairman: William P. Liljestrom, president, Chemically Prestressed Concrete Corporation, Los Angeles, California

Session II

A Look at Type-K Shrinkage-Compensating Cement Production and Specifications

George C. Hoff, chief, Materials Properties Branch, Engineering Mechanics Division; and Katharine Mather, chief, Engineering Sciences Division, Concrete Laboratory, U. S. Army Engineer Waterways Experiment Station, Vicksburg, Mississippi

Perimeter Restraint Methods for Reducing Required Steel for Expansive Cement Concrete Slabs

Robert J. Gulyas, Medusa Cement Company, Cleveland, Ohio

Summary Report on Type-K Shrinkage-Compensating Concrete Bridge Deck Installations in the State of Ohio

David O. Lower, sales engineer, Southwestern Portland Cement Company, Fairborn, Ohio

A Report of Oil Well Cementing Using Shrinkage-Compensating Cements

D. G. Calvert, development specialist, Dowell, Division of Dow Chemical USA, Tulsa, Oklahoma

Portland Cement Versus Expansive Cement in Post-Tensioned Concrete Structures

Mark W. Hoffman, chief structural engineer, Dalton, Dalton, Little and Newport, Cleveland, Ohio

A Field Study of Shrinkage-Compensating Cement Concrete

Frank A. Randall, Jr., senior structural engineer, Concrete Technology Section, Engineering Services Department, Portland Cement Association, Skokie, Illinois

Crack Control for Spillway Chute at Ririe Dam

R. A. Kaden, chief, Materials Section; and E. K. Schrader, civil engineer, U. S. Army Engineer District, Walla Walla, Washington

Behavior of Shrinkage-Compensating Concretes Suitable for Use in Bridge Decks

Robert W. Cusick, civil engineer, Hanson Engineers, Springfield, Illinois; and Clyde E. Kesler, professor of civil engineering and theoretical and applied mechanics, University of Illinois, Urbana, Illinois

Thursday, October 20
2:00 p.m. - 5:00 p.m.

CERTIFICATION OF INSPECTORS

sponsored by ACI Committee 311

Imperial Salon

Session Chairman: Bertold E. Weinberg, chairman, ACI Committee 311, and project manager, Dormitory Authority of the State of New York, Elsmere, New York

The Need for Certification of Inspectors

Robert E. Philleo, chief, Concrete Branch, Engineering Division, Office, Chief of Engineers, Washington, D. C.

How Certification Is and Is Not Working in One State

Herman G. Protze, president, Materials Technologists, Newton Highlands, Massachusetts

Certification in the Nuclear Containment Vessel Program

Raymond J. Vurpillat, assistant manager, Reliability and Quality Assurance Department, United Engineers & Constructors, Inc., Philadelphia, Pennsylvania

The Department of Commerce's Consideration of Accreditation of Concrete Testing Laboratories

Norman F. Simes, chief, Laboratory Evaluation Technology Section, National Bureau of Standards, Washington, D. C.

What is ACI's Program for Certification

Dennis T. Smith, technical services manager, Marquette Cement Manufacturing Company, Nashville, Tennessee

Discussion

Summation

Bertold E. Weinberg, session chairman

Thursday, October 20
2:00 p.m. - 5:00 p.m.

VIBRATIONS OF CONCRETE STRUCTURES

sponsored by ACI Committee 435

Tulane Room

Session Chairman: Gajanan M. Sabnis, past chairman, ACI Committee 435, and associate professor of civil engineering, Howard University, Washington, D. C.

Introduction

Gajanan M. Sabnis, session chairman

Requirements and Provisions for Dynamic Deflections

Joseph Warwaruk, professor of civil engineering, University of Alberta, Edmonton, Alberta

Deflection Performance Criteria for Concrete Floors

Robert A. Crist, managing director, Publications and Technical Affairs, American Society of Civil Engineers, New York, New York; and James R. Shaver, research structural engineer, National Bureau of Standards, Washington, D. C.

Vibration Criteria for Long Span Floors

David E. Allen, H. Rainer, and G. Pernica, research officers, Division of Building Research, National Research Council of Canada, Ottawa, Ontario

Dynamic Characteristics of Reinforced Concrete Buildings

John A. Blume, president, and K. K. Honda, project engineer, URS/John A. Blume & Associates, San Francisco, California

Frequency Matching in Continuous Post-Tensioned Concrete Highway Bridges

Thomas I. Campbell, associate professor of civil engineering, Queen's University, Kingston, Ontario; P. F. Csagoly, principal research engineer; and A. C. Agarwal, research officer, Ministry of Transportation and Communications, Downsview, Ontario

Some Observations on the Dynamic Sway Characteristics of Concrete Structures

A. P. Jeary and Peter R. Sparkes, Building Research Establishment, Building Research Station, Garston, Watford, England

Dynamic Response of a Composite Metal Deck Floor System

Conrad P. Heins, and D. W. Vannoy, assistant professor, Department of Civil Engineering, University of Maryland, College Park, Maryland

Concrete Structures and Construction Vibrations

Kenneth P. Akins, Jr., project engineer, and Donald E. Dixon, consultant, Law Engineering Testing Company, Atlanta, Georgia

Closure

James R. Libby, chairman, ACI Committee 435, and president, James R. Libby and Associates, San Diego, California

Thursday, October 20
7:00 p.m. - 10:00 p.m.

FORUM: Needed Research and Development for Evaluating the Strength of Existing Concrete Structures

sponsored by ACI Committee 114 in cooperation with ACI Committee 437

Presidential Salon

Institute Codes have traditionally emphasized new construction. This emphasis has influenced the development of strength test methods for new structures with the resultant neglect of procedures to determine the strength of existing structures.

Given the current interest in historical preservation and the need to utilize existing buildings, the necessity for a strength evaluation of these structures will continue. However, the engineer summoned to make the evaluation is often faced with a dilemma in how to do it. Currently, he must use either analysis or the load testing method.

If analytical procedures are used, the engineer must make a thorough investigation of the materials, dimensions, and physical condition of the structure. From this information he must determine the strength of the concrete, the strength of the reinforcing steel, and the strength of the entire unit.

Research is needed to develop a means of determining concrete strength directly. The present method relies upon cores which may not be indicative of the concrete in place as instances have been reported where these cores have yielded highly questionable results. A better method for determining the in-place strength is essential.

In utilizing the second strength test of existing concrete, the structure must be subjected to a total load less than that expected to cause actual failure. Indications are that load testing can be so detrimental to a building that this method has been removed from some European codes. More research needs to be done on the effects of this procedure to determine just what the chances are of aggravating failure when it is used. Feasibility is also a problem since walls and columns are very difficult to evaluate by load testing.

Some research is going on at the present time to determine and establish criteria for evaluating existing structures. We need to determine just what is being done and what organizations are involved. Most of it appears to be centered around analyzing the effects of earthquakes; however, we do not have the entire picture.

The Forum would provide a way to collect information on programs now underway and would undoubtedly stimulate further research. ACI Committees 114 and 437 invite comments from those in cooperative research and development pertaining to the subject and urge them to attend this Forum.

Friday, October 21
8:30 a.m. - 11:30 a.m.

STRUCTURAL DESIGN AND REHABILITATION OF PAVEMENTS

sponsored by ACI Committee 325

Presidential Salon

Session Chairman: Thomas J. Pasko, Jr., chairman, ACI Committee 325, and highway research engineer, Paving and Structural Materials Group, Federal Highway Administration, Washington, D. C.

New Developments with Structural Concrete Overlays

Karl H. Renner, chief engineer, Associated Reinforcing Bar Producers, Chicago, Illinois

Iowa's Thin Bonded Overlays

Marlyn J. Knutson, Iowa Concrete Paving Association, West Des Moines, Iowa

Design of Load Transfer Systems for Portland Cement Concrete Pavements

Amir M. Tabatabaie, graduate research assistant of civil engineering, Talbot Laboratory, University of Illinois, Urbana, Illinois

Factors in Blow-Ups Under Overlays

Charles F. Scholer, associate professor, Department of Civil Engineering, Purdue University, West Lafayette, Indiana

Polymer Concrete Patching Materials

Jack J. Fontana, chemist, Department of Applied Science, Brookhaven National Laboratory, Upton, New York

Joint Sealing/Resealing in Portland Cement Concrete Pavements

Pierce R. Smith, Hunt Process Corporation, Santa Fe Springs, California

Friday, October 21
9:00 a.m. - 12:00 noon

SYMPOSIUM ON SLUMP LOSS

sponsored by ACI Ad Hoc Committee on Slump Loss

Imperial Salon

Session Chairman: A. T. Hersey, chairman, Ad Hoc Committee on Slump Loss, and manager, E. L. Conwell Company, Coplay, Pennsylvania

Introduction

A. T. Hersey, session chairman

Slump Loss

Lewis H. Tuthill, concrete engineering consultant, Sacramento, California

Slump Loss and the Use of Retempering Water in Ready Mixed Concrete Operations — Some Alternatives

Richard D. Gaynor, vice-president of engineering and research, National Ready Mixed Concrete Association, Silver Spring, Maryland

Theory of Slump Loss as Caused by Admixtures

William F. Perenchio, principal research engineer, and L. Michael Meyer, manager, Technical Service Section, Research and Development Division, Portland Cement Association, Skokie, Illinois

Slump Loss with Type "K" Expansive Cement Concretes and Admixtures

B. M. Call, director, Research and Technical Service, Cement Division, Penn-Dixie Industries, Inc., Nazareth, Pennsylvania

Some Causes of Undesirable Concrete Slump Losses and Placement Problems

Bernard Erlin and William G. Hime, materials and concrete consultants, Erlin, Hime Associates, Northbrook, Illinois

Concrete Slump Loss

Michael F. Pistilli, laboratory manager, and Greg Bobrowski, technical manager, American Admixtures Corporation, Chicago, Illinois

Friday, October 21
9:00 a.m. - 12:00 noon

PRACTICAL CONTROL OF CRACKING IN CONCRETE STRUCTURES

sponsored by ACI Committee 224

Royal Salon

Session Chairman: Bernard L. Meyers, chairman, ACI Committee 224, and civil engineering specialist, Bechtel Power Corporation, Gaithersburg, Maryland

Control of Cracking in Concrete Structures: An Overview

Bernard L. Meyers, session chairman

Causes and Control of Cracking in Plain Concrete

Roy W. Carlson, consulting engineer, Berkeley, California; Donald L. Houghton, Geology, Soils and Materials Branch, North Pacific Division, U. S. Army Corps of Engineers, Portland, Oregon; and Milos Polivka, professor of civil engineering, University of California, Berkeley, California

Influence of Reinforcement Style on the Width of Flexural Cracks in Beams Subjected to Sustained and Repeated Loads

Thavaj Bhuvorsakul, structural engineer, Benham, Blair and Affiliates Inc., Oklahoma City, Oklahoma; Hussam M. F. Ghanen, graduate student; and John P. Lloyd, associate professor, School of Civil Engineering, Oklahoma State University, Stillwater, Oklahoma

Reinforced Concrete Corners Subjected to Negative Moments

G. R. McLelland, graduate student; and Robert L. Yuan, associate professor, Department of Civil Engineering, University of Texas at Arlington, Arlington, Texas

Crack Control of Ferrocement and Its Comparison with Reinforced Concrete

S. P. Shah, professor of civil engineering; and A. E. Naaman, assistant professor of structural design, Department of Materials Engineering, University of Illinois at Chicago Circle, Chicago, Illinois

Crack Resistant Concrete for Corrosion Protection

Richard A. Kaden, and Ernest K. Schrader, civil engineers, Foundations and Materials Branch, U. S. Army Corps of Engineers, Walla Walla, Washington

Cracking Behavior of Prestressed Concrete Beams

Edward G. Nawy, professor of civil engineering, and Jim Y. J. Chiang, graduate student, Department of Civil and Environmental Engineering, Rutgers University, Piscataway, New Jersey; and P. T. Huang, senior structural engineer, Gibbs and Hill Consulting Engineers, New York, New York

Practical Control of Early Thermal Cracking in Reinforced Concrete Walls

C. D. Turton, senior advisory engineer, Cement and Concrete Association, Manchester, England

Crack Control in Concrete Structures — The Designers and Contractors Responsibility

Julius G. Potyondy, associate professor of civil engineering, Nova Scotia Technical College, Halifax, Nova Scotia

Concrete Crack Control and Quality Assurance

Edwardo Santos Basilio, consulting civil engineer, Rio de Janeiro, Brazil; and Bernard L. Meyers, civil engineering specialist, Bechtel Power Corporation, Gaithersburg, Maryland

TENNIS OR GOLF, ANYONE?

A feature of this year's fall convention is a friendly golf and tennis competition on Wednesday afternoon, where you can test your physical skills in a relaxing, fun-type atmosphere.

A number of golf trophies will be presented for the best scores including low net handicap, low net peoria, and low gross.

A tennis tournament is also on the agenda. You'll be serving a few up in a "Scrambles Doubles" for men and women alike.

If you wish to participate in either the golf or tennis, you may sign up at the ACI Registration Desk. Fees are \$12 for tennis, \$30 for golf and include the following:

Tennis — City Park

Six rubico courts have been reserved between the hours of 12:00 noon and 5:00 p.m. Transportation will leave the Grand Hotel at 11:30 a.m. and return at 5:30 p.m.

Golf — Lakewood Country Club

Transportation will leave the Grand Hotel at 11:30 a.m. and return at 5:30 p.m. The greens fee is \$15 and cart rentals are \$5 per person or \$10 per cart. These fees are included in your ticket cost.

A cash snack bar will be set up at the ninth hole.

FAMILY MEMBERS' PROGRAM

Hospitality: Meeting Room 1

Morning coffee and light refreshments will be provided in the hospitality room starting Monday morning at 9:00 a.m.

MONDAY

9:00 a.m.

Registration

9:30 a.m. - 10:30 a.m.

"All This is Louisiana" in the Grand Hotel

A sample of everything uniquely New Orleansian: a little history, a touch of fashion, some music, and a spot of nostalgia, spiced with charm. It is an audience participation show, highlighted by a Mini-Auction and climaxed by a Mini-Mardi Gras.

10:30 a.m. - 12:30 p.m.

French Quarter Walking Tour

Transportation to the French Quarter, a visit to the Beuregard-Keys Home and refreshments of cafe au lait and beignets at Cafe du Monde. After the tour, you are free to explore as you will.

6:45 p.m.

Treasures of Tutankhamun

Transportation to the Museum of Art to view the magnificent treasures of King Tut. Return transportation will be provided. Tickets are limited. You may also attend on your own, making arrangements direct with the Museum.

TUESDAY

9:00 a.m. - 11:00 a.m.

Art Exhibit and Demonstration . . . by some of the artists from New Orleans' Jackson Square Art Colony.

12:00 noon - 5:30 p.m.

City, Garden District, and Longue Vue Gardens Tour

With luncheon at the Commander's Palace. Visit the University Section and then the Garden District. You will see an antebellum mansion and an above-ground cemetery. Longue Vue is an estate whose gardens encompass the magnificence of Spain's Alhambra, the perfection of formal English terraces, and the tranquility of a pastoral wood.

WEDNESDAY

9:00 a.m. - 10:30 a.m.

"Rap" Session: A chance to find out everything you have ever wanted to know about ACI. This session will be moderated by Past President Russell S. Fling and is designed to let you let us know what's on your mind about the Institute and its functions. Come and air your views and your questions!

12:00 noon - 5:00 p.m.

Tennis Tournament — City Park

Buses will leave at 11:30 a.m. and return at 5:30 p.m. Six courts have been reserved and tickets are limited. Get yours early at the ACI Registration Desk.

Golf Tournament — Lakewood Country Club

Buses will leave at 11:30 a.m. and return at 5:30 p.m. Tickets are limited so get yours early at the ACI Registration Desk.

NOTE: Further information is located on page 31 of this program on both the tennis and golf tournaments.

THURSDAY

9:00 a.m. - 2:00 p.m.

River Road Plantation Tour

Tour includes visits to three fully-restored antebellum plantations: Houmas House, Tezcuco, and l'Hermitage. Lunch will be served in l'Hermitage.

FRIDAY

9:00 a.m.

Coffee and Danish



ACI FUTURE CONVENTIONS

1978 Annual Convention

April 9-14

Royal York Hotel

Toronto, Ontario, Canada

1978 Fall Convention

October 29 - November 3

Hyatt Regency Hotel

Houston, Texas

1979 Annual Convention

April 1-6

Marc Plaza Hotel

Milwaukee, Wisconsin

1979 Fall Convention

October 28 - November 2

The Capital Hilton Hotel

Washington, D. C.

ACI EDUCATIONAL SEMINARS

NOTES

SCHEDULE FOR FALL, 1977

November 1-2

Concrete Inspection — One Route to Quality
Arlington, Virginia

November 8-9

Concrete Quality Control — Specifications, Inspection and
Testing
Lawrence, Kansas

November 10-11

1977 ACI FORMWORK CONFERENCE — Quality-Safety-
Economy
Troy, Michigan

November 15-16

Designing and Constructing with High Strength Concrete
Pittsburgh, Pennsylvania

December 2-3

Efficiency and Economy — Place Concrete with Pumps
Atlanta, Georgia

December 8-9

Precast-Prestressed Concrete Structures
Monterrey, Mexico

**NEW ORLEANS
CONVENTION COMMITTEE**

General Chairman

William B. Haensel, Jr.
Technical Inspection & Control Corporation

**Secretary-Treasurer
and**

Publicity Chairman

Sylvia Nickerson
Louisiana Chapter

Program Chairman

James P. Schwartz
Jimco, Inc.

Membership-Social Activities Chairman

Herbert J. Cooke
Nickerson and Associates

The officers, staff, and members of ACI would like to thank the Local Committee, the Hostesses, the Louisiana Chapter, and the staff of New Orleans Hospitality, Inc., for their part in the 1977 Fall Convention.

Don't miss next year's
Annual Convention
in Toronto

APRIL 9 - 14, 1978

