

Work Copy

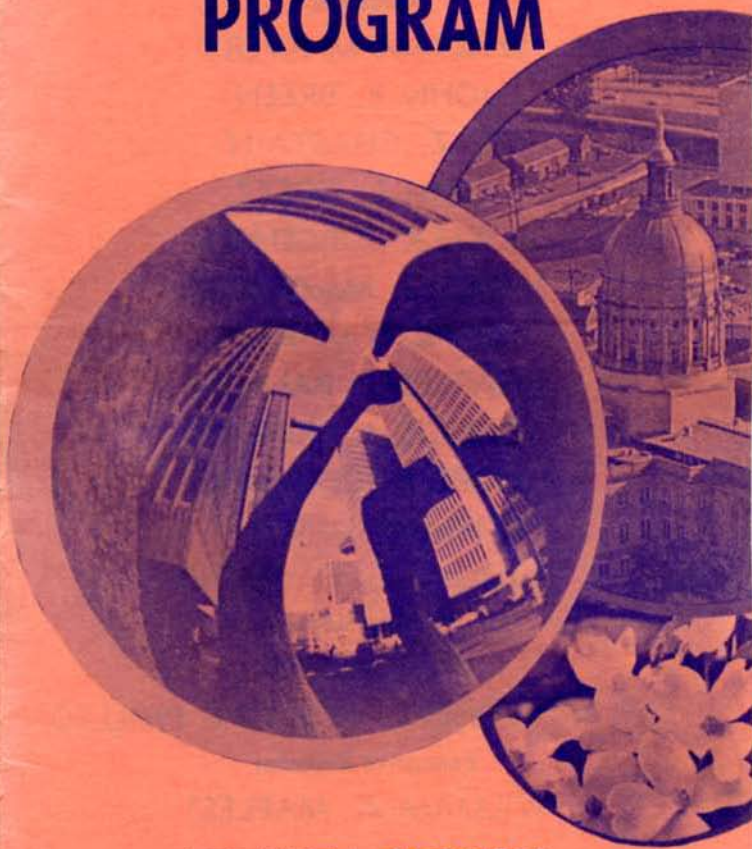
AMERICAN CONCRETE INSTITUTE

LUCIA



Fall Convention

PROGRAM



ATLANTA, GEORGIA
October 26- November 1
1974

Sheraton-Biltmore

(404) 881-9500

817
West
Peachtree
Street
Atlanta, GA 30308



BOARD OF DIRECTION

President

CHESTER P. SIESS

Vice-Presidents

JOSEPH H. WALKER

RUSSELL S. FLING

Directors

WILLIAM M. AVERY

JOHN E. BREEN

T. Z. CHASTAIN

JOHN L. GOETZ

IB FALK JORGENSEN

JAMES G. MacGREGOR

IGNACIO MARTIN

CHARLES J. PANKOW

FRANCIS J. PRINCIPE

MORRIS SCHUPACK

NORMAN L. SCOTT

BERTOLD E. WEINBERG

Past Presidents

W. J. McCOY

EDWARD COHEN ROBERT E. PHILLEO

Executive Director

WILLIAM A. MAPLES*

*American Concrete Institute
P.O. Box 19150
Detroit, Michigan 48219

TECHNICAL ACTIVITIES COMMITTEE

PAUL KLIEGER, Chairman

SAMUEL J. HENRY, Secretary*

JOHN E. BREEN

T. Z. CHASTAIN

RUSSELL S. FLING

HOWARD NEWLON, JR.

CHARLES J. PANKOW

EDWARD O. PFRANG

THOMAS J. READING

PETER SMITH

PAUL ZIA

EDUCATIONAL ACTIVITIES COMMITTEE

EMERY FARKAS, Chairman

GILBERT E. SEELEY, Secretary*

CUTBERTO DIAZ-GOMEZ

EDWARD L. KAWALA

EMORY L. KEMP

BOYD C. RINGO

DENNIS T. SMITH

GENERAL ACTIVITIES COMMITTEE

FRANCIS J. PRINCIPE, Chairman

ROBERT E. WILDE, Secretary*

W. BURR BENNETT

HALVARD W. BIRKELAND

JAMES R. LIBBY

GEORGE H. PARIS

NORMAN L. SCOTT

KENNETH D. SIMMONS

CHARLES W. WILSON

*American Concrete Institute
P.O. Box 19150
Detroit, Michigan 48219



CONVENTION COMMITTEE

JOHN L. GOETZ, Chairman
HOWARD W. SMITH, Secretary*
J. R. FLOREY
SAMUEL J. HENRY
DANIEL P. JENNY
FRANCIS J. PRINCIPE
GILBERT E. SEELEY
DENNIS T. SMITH
PETER SMITH
ROBERT E. WILDE

*American Concrete Institute
P.O. Box 19150
Detroit, Michigan 48219

PROGRAM FALL CONVENTION October 26-November 1, 1974 Atlanta, Georgia

Registration fees cover attendance at all ACI technical and educational committee meetings, general session, and symposia. They do **not** cover the educational workshop on Thursday evening for which there is a charge of \$15.00.

contents	page
Breakfasts for program participants	6
Schedule	7
Special Events	6
Committee Meetings	8
Floor Plan of Meeting Rooms	12-13
General Session	17
Symposium on Segmental Bridge Design and Construction (first session)	15
Symposium on Segmental Bridge Design and Construction (second session)	16
Symposium on Inspection	17
Forum on Research and Development on Determination of Contract Strength Requirements for Concrete Structures	18
Slab Design and Construction Workshop	19
Construction Session	20
Lessons Learned from Failures of Concrete Structures	21
Women's Program	22
Future ACI Conventions	24
ACI Atlanta Convention Committee	23
ACI Educational Seminar Schedule for Fall, 1974	6

special events

Publications Display . . . in the Crystal Lounge. All the current ACI publications are there. Orders are taken at the Registration Desk which is also in the Crystal Lounge.

"Concrete Mixer" social hour . . . Wednesday, 6:30 to 8:00 p.m., in the Georgian Ballroom. Please wear your badge.

Forum: Research and Development Program on Determination of Contract Strength Requirements for Concrete Structures by Testing Cores and Other Field Methods. Sponsored by ACI Committee 114 in cooperation with ACI Committee 214. Thursday, 7:00 to 10:00 p.m., in the Georgian Ballroom.

Slab Design and Construction Workshop . . . Sponsored by ACI Educational Committee E-704 in cooperation with ACI Educational Committee E-702. Thursday, 7:00 to 11:00 p.m., in the Seminar Center. Registration fee: \$15:00, payable at the ACI Registration Desk.

Breakfasts (by invitation only):

Wednesday, October 30, 7:00 a.m.
breakfast for program participants in the Symposium on Segmental Bridge Design and Construction. Mezzanine Room.

Thursday, October 31, 7:00 a.m.
breakfast for program participants in the General Session and the Symposium on Inspection. Mezzanine Room.

Friday, November 1, 7:00 a.m.
breakfast for program participants in the Construction Session and the session on Lessons Learned From Failures of Concrete Structures. Mezzanine Room.

ACI EDUCATIONAL SEMINARS SCHEDULE FOR FALL, 1974

November 5

Using the Strength Design Handbook
Jacksonville, Fla.

November 7

Using the Strength Design Handbook
Tampa, Fla.

November 21-22

Nuclear Power Plant Construction
Philadelphia, Pa.

December 5-6

Earthquake Resistant Concrete Structures
Mexico City, Mexico

schedule

SUNDAY, OCTOBER 27

2:00 p.m. - 6:00 p.m.
Administrative committee meetings

MONDAY, OCTOBER 28

8:30 a.m. - 6:00 p.m.
Technical, educational, and administrative committee meetings

TUESDAY, OCTOBER 29

8:30 a.m. - 9:00 p.m.
Technical, educational, and administrative committee meetings

WEDNESDAY, OCTOBER 30

8:30 a.m. - 6:00 p.m.
Technical, educational, and administrative committee meetings
9:00 a.m. - 12:00 noon
Symposium on Segmental Bridge Design and Construction (first session) (Committees 423 and 443)
1:30 p.m. - 5:30 p.m.
Symposium on Segmental Bridge Design and Construction (second session) (Committees 423 and 443)
6:30 p.m. - 8:00 p.m.
Concrete Mixer

THURSDAY, OCTOBER 31

9:30 a.m. - 12:00 noon
General Session
2:00 p.m. - 10:00 p.m.
Technical, educational, and administrative committee meetings
2:00 p.m. - 5:00 p.m.
Symposium on Inspection (Committee 311)
7:00 p.m. - 10:00 p.m.
Forum on Research and Development on Determination of Contract Strength Requirements for Concrete Structures (Committee 114, cosponsored by Committee 214)
7:00 p.m. - 11:00 p.m.
Slab Design and Construction Workshop (Committees E-704 and E-702)

FRIDAY, NOVEMBER 1

9:00 a.m. - 12:00 noon
Session on Construction
9:00 a.m. - 12:00 noon
Lessons Learned from Failures of Concrete Structures

COMMITTEE MEETINGS

Be sure to check the bulletin board for last minute changes or added meetings

COMMITTEE Meeting Room

SUNDAY, Oct. 27 2 p.m.-6 p.m.

--- Technical Activities Committee Georgia

MONDAY, Oct. 28 8:30 a.m.-10:30 a.m.

--- Technical Activities Committee Georgia

--- General Activities Committee Alabama

--- Bylaws Revision Committee Directors Room

114 Research and Development Louisiana

211 Subcommittee 7, Mix Proportioning of Mass Concrete Florida

303 Architectural Concrete Room C

318 Subcommittee E, Analysis and Strength Requirements Room F

344 Circular Prestressed Concrete Structures Seminar A

351 Foundations for Equipment and Machinery Arkansas

352 Joints and Connections in Monolithic Concrete Structures Mezzanine Room

428 Limit Design Seminar East

515 Coatings for Concrete Tennessee

544 Fiber Reinforced Concrete Texas Suite

E-703 Enchiridia — Construction Room E

10:30 a.m.-12:30 p.m.

--- Technical Activities Committee Georgia

--- General Activities Committee Alabama

211 Proportioning Concrete Mixes Florida

303 Architectural Concrete Room C

318 Subcommittee B, Concrete Quality, Mixing and Placement Room F

344 Circular Prestressed Concrete Structures Seminar A

351 Foundations for Equipment and Machinery Arkansas

352 Joints and Connections in Monolithic Concrete Structures Mezzanine Room

515 Coatings for Concrete Tennessee

531 Masonry Structures Texas Suite

547 Refractory Concrete Mississippi

E-703 Enchiridia — Construction Room E

E-704 Enchiridia — Building Code Room D

2 p.m.-4 p.m.

--- Board Committee on International Activities Seminar A

--- Planning Committee Directors Room

303 Architectural Concrete Room C

305 Hot Weather Concreting Room E

315 Detailing Reinforced Concrete Structures Seminar B

318 Subcommittee A, General Building Code Room F

318 Subcommittee F, Serviceability Seminar Center

325 Concrete Pavements Florida

351 Foundations for Equipment and Machinery Arkansas

421 Design of Reinforced Concrete Slabs Seminar East

515 Coatings for Concrete Tennessee

531 Masonry Structures Texas Suite

547 Refractory Concrete Mississippi

E-601 Seminars and Workshops Mezzanine Room

4 p.m.-6 p.m.

--- Planning Committee Directors Room

120 History of Concrete Seminar A

212 Admixtures Room C

305 Hot Weather Concreting Room E

315 Detailing Reinforced Concrete Structures Seminar B

318 Subcommittee A, General Building Code Room F

318 Subcommittee F, Serviceability Seminar Center

318 Subcommittee H, Shear and Torsion Arkansas

318 Subcommittee N, Seismic Provisions Room D

325 Concrete Pavements Florida

421 Design of Reinforced Concrete Slabs Seminar East

515 Coatings for Concrete Tennessee

531 Masonry Structures Texas Suite

547 Refractory Concrete Mississippi

E-601 Seminars and Workshops Mezzanine Room

TUESDAY, Oct. 29 8:30 a.m.-10:30 a.m.

--- Educational Activities Committee Louisiana

--- Specifications Review Committee Alabama

--- TAC Ad Hoc Committee on Slabs on Grade Room C

103 Monographs Room E

214 Evaluation of Results of Tests Used to Determine Strength of Concrete Room E

223 Expansive Cement Concrete Room D

309 Consolidation of Concrete Seminar East

318 Subcommittee D, Details and Development of Reinforcement Arkansas

318 Subcommittee G, Flexure and Axial Loads Seminar B

340 Ultimate Strength Design Handbook Seminar Center

347 Formwork for Concrete Room F

348 Structural Safety Mississippi

350 Sanitary Engineering Structures Georgia

355 Anchorage to Concrete Directors Room

408 Bond Stress Seminar A

423 Prestressed Concrete Mezzanine Room

437 Strength Evaluation of Existing Concrete Structures Tennessee

444	Models of Concrete Structures	Virginia
517	Accelerated Curing of Concrete at Atmospheric Pressure	Florida
544	Fiber Reinforced Concrete	Texas Suite

10:30 a.m.-12:30 p.m.

----	Educational Activities Committee	Louisiana
----	Specifications Review Committee	Alabama
----	TAC Ad Hoc Committee on Concrete	
	Guideways	Room C
120	History of Concrete	Seminar A
223	Expansive Cement Concrete	Room D
309	Consolidation of Concrete	Seminar East
318	Subcommittee D, Details and Development of Reinforcement	Arkansas
318	Subcommittee I, Slab Systems	Seminar B
340	Ultimate Strength Design Handbook	Seminar Center
347	Formwork for Concrete	Room F
348	Structural Safety	Mississippi
350	Sanitary Engineering Structures	Georgia
355	Anchorage to Concrete	Directors Room
423	Prestressed Concrete	Mezzanine Room
426	Shear and Diagonal Tension	Texas Suite
435	Deflection of Concrete Building Structures	Virginia
517	Accelerated Curing of Concrete at Atmospheric Pressure	Florida
E-701	Enchiridia — Materials	Tennessee

2 p.m.-4 p.m.

----	Educational Activities Committee	Louisiana
----	TAC Composite Construction Study Group	Tennessee
117	Tolerances	Seminar B
207	Mass Concrete	Seminar East
213	Lightweight Aggregates and Lightweight Aggregate Concrete	Arkansas
222	Corrosion of Metals in Concrete	Room E
301	Specifications for Structural Concrete	Mississippi
306	Cold Weather Concreting	Florida
311	Inspection of Concrete	Georgia
318	Task Group on Progressive Collapse	Room C
423	Prestressed Concrete	Mezzanine Room
426	Shear and Diagonal Tension	Texas Suite
439	High Strength Reinforcement in Concrete	Seminar A
443	Concrete Bridge Design	Virginia
506	Shotcreting	Room F
516	High Pressure Steam Curing	Room D

4 p.m.-6 p.m.

----	Educational Activities Committee	Louisiana
----	Chapter Activities Committee	Seminar B
116	Nomenclature	Arkansas
301	Specifications for Structural Concrete	Mississippi
304	Measuring, Mixing, Transporting and Placing Concrete	Room E

311	Inspection of Concrete	Georgia
318	Subcommittee L, Prestressed Concrete (with Committee 423)	Mezzanine Room
318	Task Group on Simplification	Seminar Center
318	Task Group on Progressive Collapse	Room C
423	Prestressed Concrete (with Subcommittee L of Committee 318)	Mezzanine Room
426	Shear and Diagonal Tension	Texas Suite
441	Reinforced Concrete Columns	Florida
443	Concrete Bridge Design	Virginia
503	Adhesives for Concrete	Tennessee
506	Shotcreting	Room F
512	Precast Structural Concrete	Seminar A
516	High Pressure Steam Curing	Room D

7 p.m.-9 p.m.

308	Curing Concrete	Seminar East
318	Task Group on Systems Building	Directors Room
318	Task Group on Plain Concrete	Louisiana

WEDNESDAY, Oct. 30 8:30 a.m.-10:30 a.m.

118	Use of Computers	Alabama
201	Durability of Concrete	Louisiana
302	Concrete Floor Finishes	Florida
318	Standard Building Code	Seminar Center
332	Residential Concrete Work	Arkansas
356	Industrialized Concrete Construction	Virginia
438	Torsion	Georgia
504	Joint Sealants	Mississippi
524	Portland Cement Plastering	Seminar East
533	Precast Panels	Seminar A
546	Repair of Concrete	Tennessee

9 a.m.-12 noon

SYMPOSIUM ON SEGMENTAL BRIDGE DESIGN

AND CONSTRUCTION (Sponsored by ACI Committees 423 and 443) (first session)

See Page 15

Georgian Ballroom

9:30 a.m.-12 noon

Board of Direction

Texas Suite

10:30 a.m.-12:30 p.m.

118	Use of Computers	Alabama
201	Durability of Concrete	Louisiana
302	Concrete Floor Finishes	Florida
318	Standard Building Code	Seminar Center
356	Industrialized Concrete Construction	Virginia
359	Inspection Task Force, Concrete Components for Nuclear Reactors	Seminar B
438	Torsion	Georgia
533	Precast Panels	Seminar A
546	Repair of Concrete	Tennessee

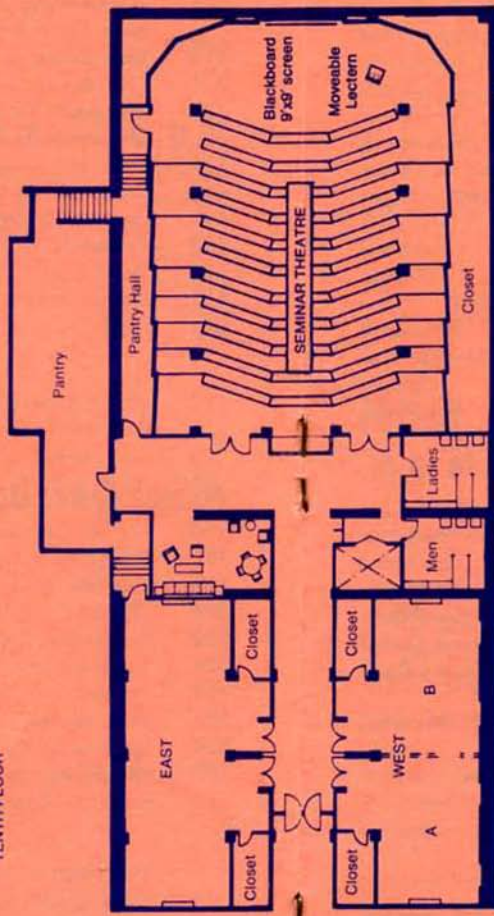
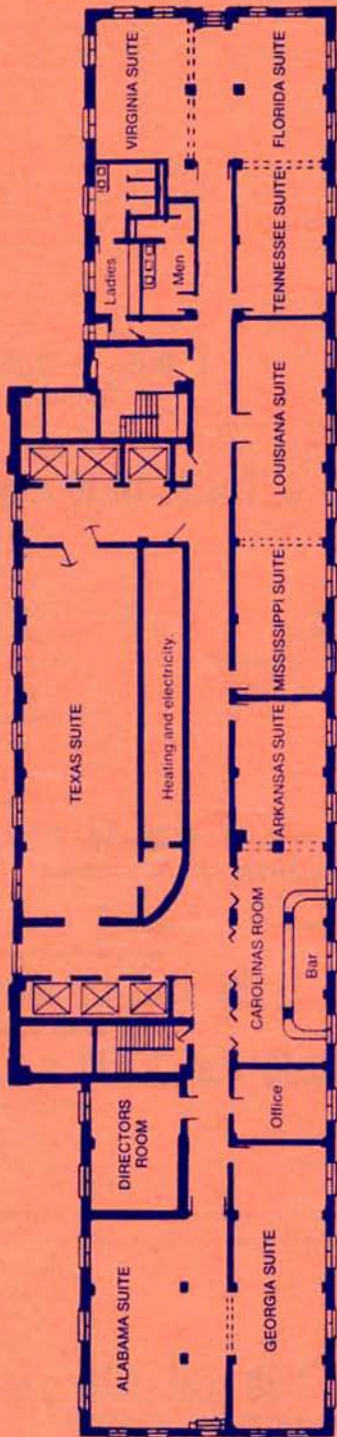
1:30 p.m.-5:30 p.m.

SYMPOSIUM ON SEGMENTAL BRIDGE DESIGN

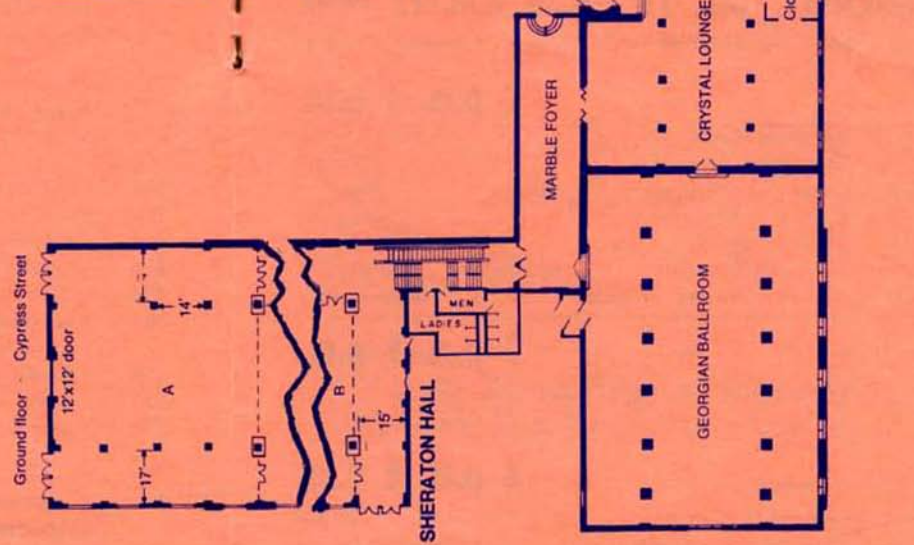
AND CONSTRUCTION (second session)

See Page 16

Georgian Ballroom



SEMINAR EAST AND WEST:



2 p.m.-4 p.m.

Board of Direction		Texas Suite
118	Use of Computers	Alabama
224	Cracking	Louisiana
302	Concrete Floor Finishes	Florida
307	Reinforced Concrete Chimneys	Seminar A
318	Standard Building Code	Seminar Center
322	Structural Plain Concrete	Directors Room
345	Concrete Bridge Construction and Maintenance	Arkansas
356	Industrialized Concrete Construction	Virginia
359	Inspection Task Force , Concrete Components for Nuclear Reactors	Seminar B
532	Concrete Masonry	Seminar East
548	Polymers in Concrete	Georgia
E-702	Enchiridia — Design	Mississippi

4 p.m.-6 p.m.

Board of Direction		Texas Suite
118	Use of Computers	Alabama
224	Cracking	Louisiana
302	Concrete Floor Finishes	Florida
307	Reinforced Concrete Chimneys	Seminar A
318	Standard Building Code	Seminar Center
322	Structural Plain Concrete	Directors Room
345	Concrete Bridge Construction and Maintenance	Arkansas
356	Industrialized Concrete Construction	Virginia
359	Inspection Task Force , Concrete Components for Nuclear Reactors	Seminar B
523	Insulating and Cellular Concretes	Mississippi

THURSDAY, Oct. 31 9:30 a.m.-12 noon

GENERAL SESSION — See Page 17 Georgian Ballroom

2 p.m.-4 p.m.

Standards Board		Directors Room
Convention Committee		
209	Creep and Shrinkage in Concrete	Alabama
215	Fatigue of Concrete	Arkansas
318	Standard Building Code	Seminar Center
336	Combined Footings and Pier Foundations	Seminar A
E-801	Student Concrete Projects	Seminar East

2 p.m.-5 p.m.

SYMPOSIUM ON INSPECTION (Sponsored by ACI Committee (311) See Page 17 Georgian Ballroom

4 p.m.-6 p.m.

Convention Committee		Georgia
318	Standard Building Code	Seminar Center

7 p.m.-10 p.m.

FORUM ON RESEARCH AND DEVELOPMENT ON DETERMINATION OF CONTRACT STRENGTH REQUIREMENTS FOR CONCRETE STRUCTURES

(Sponsored by ACI Committee 114 in cooperation with ACI Committee 214) See Page 18

Georgian Ballroom

318 Standard Building Code Texas Suite

7 p.m.-11 p.m.

SLAB DESIGN AND CONSTRUCTION WORKSHOP

(Sponsored by ACI Committee E-704 in cooperation with ACI Committee E-702) See Page 19

Seminar Center

FRIDAY, Nov. 1 9 a.m.-12 noon

CONSTRUCTION SESSION — See Page 20

Sheraton Hall A

LESSONS LEARNED FROM FAILURES OF CONCRETE STRUCTURES — See Page 21 Georgian Ballroom

wednesday, october 30

9:00 a.m. - 12:00 noon

SYMPOSIUM ON SEGMENTAL BRIDGE DESIGN AND CONSTRUCTION

sponsored by ACI Committees 423 and 443

Georgian Ballroom

Session Chairman: Neil M. Hawkins, professor of civil engineering, University of Washington, Seattle, Washington

Session I: *Segmental Box Girder Bridges*

Segment Design: **A Critique of Considerations for Proportioning**
James R. Libby, president, Libby-Perkins Engineers, San Diego, California

Current Practice in Segment Precasting, Erection, and Joints
Brice F. Bender, president, Segmental Technology & Services, Lafayette, Indiana

Epoxy Adhesives in Prestressed and Precast Bridge Construction

Raymond J. Schutz, vice president, Research and Development, Sika Chemical Corporation, Lyndhurst, New Jersey

Lessons Learned from Design and Construction of the Corpus Christi Bridge

John E. Bréen, professor of civil engineering, University of Texas at Austin, Austin, Texas

Presentation of the 1974 Prestressed Concrete Institute Award to the Bridge Division, Texas Highway Department for the Gulf Intracoastal Waterway Bridge, the first precast segmental box girder bridge in the United States.

Rio de Janeiro-Niteroi Bridge

Gerard F. Fox, partner, Howard, Needles, Tammen & Bergendoff, New York, New York

wednesday, october 30
1:30 p.m. - 5:30 p.m.

SYMPOSIUM ON SEGMENTAL BRIDGE DESIGN AND CONSTRUCTION

sponsored by ACI Committees 423 and 443

Georgian Ballroom

Session Chairman: Clifford L. Freyer, chairman, ACI Committee 423, and director, Post-Tensioning Division, Prestressed Concrete Institute, Chicago, Illinois

Session II:

1:30 p.m.-2:30 p.m.

Session IIA: Precast Segmental Girder Bridges

Precast Segmental Girder Bridges

Arthur R. Anderson, senior vice president, Concrete Technology Corporation, Tacoma, Washington

Simplifying Segmental Bridge Construction for Skew Bridges by Using Squared-Off Abutments

Morris Schupack, president, Schupack Associates and Company, Stamford, Connecticut

2:30 p.m. - 4:00 p.m.

Session IIB: Cast-in-Place Cantilever Bridges

Richard Dokken, bridge engineer-planning, California Department of Transportation, Sacramento, California

Cast-in-Place Cantilever Bridge Construction

Richard Heinen, president, Dyckerhoff and Widmann, Inc., New York, New York

4:00 p.m. - 5:00 p.m.

Session IIC: Cable-Stayed Bridges and Incremental Launching

Chaco-Corrientes Bridge

Herbert B. Rothman, partner, Ammann and Whitney Consulting Engineers, New York, New York

Columbia River Bridge and Incremental Launching

Arvid P. Grant, partner, Grant and Leonhardt, Consulting Structural Engineers, Olympia, Washington

5:00 p.m. - 5:30 p.m.

Panel Discussion

All Symposium Participants.



progress through knowledge

thursday, october 31

9:30 a.m. - 12:00 noon

GENERAL SESSION

Georgian Ballroom

Raymond E. Davis Lecture: Moving the Spirit to R & D in Concrete

Richard C. Mielenz, vice president, Research and Development, Master Builders, Cleveland, Ohio

Presentation of Certificates

Skyline Towers Apartment Collapse, Bailey's Crossroads, Virginia

Edgar V. Levendecker, structural research engineer, Building Research Division, National Bureau of Standards, Washington, D.C.

History of Concrete in Atlanta and Southeastern United States

Eugene H. Boeke, Sr., construction consultant, Atlanta, Georgia

Proposed Revision of "Recommended Practice for Selecting Proportions for No-Slump Concrete (ACI 211-65)"

John R. Wilson, chairman, ACI Committee 211, and director of technical services, Cement and Lime Division, Martin-Marietta Corporation, Baltimore, Maryland

Proposed Revision of "Recommended Practice for Concrete Inspection (ACI 311-64)"

Bertold E. Weinberg, chairman, ACI Committee 311, and project manager, Dormitory Authority of the State of New York, Elsmere, New York

thursday, october 31

2:00 p.m. - 5:00 p.m.

SYMPOSIUM ON INSPECTION

sponsored by ACI Committee 311

Georgian Ballroom

Session Chairman: Bertold E. Weinberg, chairman, ACI Committee 311, and project manager, Dormitory Authority of the State of New York, Elsmere, New York

Concrete Quality Control Instruments

T. W. Van Zelst, president, Soiltest, Inc., Evanston, Illinois

Inspection Requirements for Precast Concrete

Irwin J. Speyer, consulting engineer, New York, New York

Inspection Requirements for Building Construction

James R. Cagley, consulting structural engineer, Martin & Cagley, Rockville, Maryland

Inspection Requirements for Highway Construction

Orrin Riley, associate, Howard, Needles, Tammen & Bergendoff, Haverford, Pennsylvania

The Contractor's Inspection Requirements

Michael A. Lombard, chairman of the board, The Lombard Company, Alsip, Illinois

thursday, october 31
7:00 p.m. - 10:00 p.m.

FORUM: Recommended Research and Development Program on Determination of Contract Strength Requirements for Concrete Structures by Testing Cores and Other Field Methods

sponsored by ACI Committee 114 in cooperation with ACI Committee 214

Georgian Ballroom

A need exists for an industry investigation of the relationship between the results of tests made on concrete cylinders cast during construction, and destructive and non-destructive tests made at a later date on the concrete as cast in place. Methods and criteria useful for such purpose can be applied to determine conformance of concrete in place with specifications based upon testing of molded cylinders.

Concrete quality is determined from 6- by 12-in. cylinders cast from the plastic concrete used in the construction and tested in compression at specified ages. Core strengths are significantly less than those of cylinders which have been properly cast, transported, cured, and tested. Question has been raised concerning the validity of the assumption that cylinder and core strengths can be related for all mix and materials combinations as closely as required by ACI 301 and 318.

Other methods of evaluating hardened concrete are being used and it is opportune to include these in this program. Since conditions may vary with orientation, mass, and other aspects of the casting, procedures should be designed to evaluate such variability. Suggested relations could appropriately be indicated among strength levels based on the following methods: (1) Compressive strength of molded cylinders; (2) compressive strength of drilled cores; (3) compressive strength of push-out cylinders; (4) penetration resistance; (5) relation of density-strength relationship as determined by ultrasound transmission; (6) impact-rebound hammer; (7) pull-out resistance of cast inserts or penetration probes; and (8) other techniques.

A need exists for the establishment of a test procedure which may serve as a guide for multiple sponsors and researchers. ACI 114 and 214 invite comments from those interested in cooperative or coordinated research and development pertaining to this subject and urge them to attend this Forum.

thursday, october 31
7:00 p.m. - 11:00 p.m.

SLAB DESIGN AND CONSTRUCTION WORKSHOP

sponsored by ACI Committee E-704 in cooperation with ACI Committee E-702

Seminar Center

This is a construction workshop for engineers and designers. It is aimed at those wishing to expand their knowledge of two-way reinforced concrete slab design and at those wanting to learn slab design. Participants will increase their understanding of the behavior of two-way slabs and of the analysis of procedures specified in ACI 318-71, **Building Code**. The direct design and equivalent frame methods will be discussed. Details of steel placement to assure desired slab performance will be included. Examples and pass-outs will be distributed. Discussion will also be presented on certain construction aspects of slab behavior concentrating on formwork, shoring, and reconstruction.

Enrollment is limited, therefore, early registration is advised. **Registration fee is \$15.00.**

7:00 p.m. - 7:30 p.m.

Registration: Workshop starts promptly at 7:30 p.m.

7:30 p.m. - 7:40 p.m.

Introduction: Overview and Intent of Workshop Series. Emery Farkas, chairman, ACI Educational Activities Committee, and general sales manager, W. R. Grace & Company, Cambridge, Massachusetts

7:40 p.m. - 8:20 p.m.

Behavior: Behavior, objective, and general aspects of two-way reinforced concrete slab analysis, design, and construction. The continuity of two-way action including formwork, openings, reconstruction, etc., related to the analysis and design process will be discussed.

Boyd C. Ringo, professor of civil engineering, Department of Civil and Environmental Engineering, University of Cincinnati, Cincinnati, Ohio

8:20 p.m. - 9:00 p.m.

Direct Design: The direct design method of ACI 318-71 including analysis and design will be presented with attention to the calculation process, including distributions of loadings and moments and determination of required reinforcing steel. William J. Wilhelm, chairman, ACI Committee E-702, and acting chairman, Department of Civil Engineering, West Virginia University, Morgantown, West Virginia

9:00 p.m. - 9:15 p.m.

Break for Refreshments and Questions.

9:15 p.m. - 9:50 p.m.

Equivalent Frame: The equivalent frame method of ACI 318-71, including determination of stiffnesses and the calculation process will be presented. The direct design and equivalent frame methods constitute an integrated presentation.

Emory L. Kemp, professor of civil engineering, Department of Civil Engineering, West Virginia University, Morgantown, West Virginia

9:50 p.m. - 10:30 p.m.

Details: Proper selection of reinforcing steel and concrete details, including embedment, etc., to assure the proper continuity of the resultant product will be discussed. Slab maintenance, concrete quality, and other related factors will be included.

Donald E. Hoeffel, partner, Miller, Tallarico, McNinch and Hoeffel, Cincinnati, Ohio

10:30 p.m. - 11:00 p.m.

Summary: This time will be devoted to answering questions, summarizing the overall presentation, and catching up in general.

11:00 p.m.

Adjournment.

friday, november 1

9:00 a.m. - 12:00 noon

CONSTRUCTION SESSION

Subject: Design and Construction of the 70-Story Peachtree Center Hotel, Atlanta, Georgia

Sheraton Hall A

Session Chairman: Donald Musser, regional structural engineer, Portland Cement Association, Atlanta, Georgia

General Design Considerations

John R. Street, architect, John Portman & Associates, Atlanta, Georgia

Structural Design Considerations

David Doar, chief structural engineer, John Portman & Associates, Atlanta, Georgia

Concrete Quality Control

Donald E. Dixon, consultant in construction materials, Law Engineering Testing Company, Atlanta, Georgia

General Construction Procedures

Paul H. Johnson, project manager, J. A. Jones Construction Company, Atlanta, Georgia

friday, november 1

9:00 a.m. - 12:00 noon

LESSONS LEARNED FROM FAILURES OF CONCRETE STRUCTURES

Georgian Ballroom

Panel I: Gymnasium Roof of Tucker High School, Richmond, Virginia

Moderator: John E. Breen, professor, Department of Civil Engineering, University of Texas at Austin, Austin, Texas

Panel: Thomas A. Hanson, owner, Thomas A. Hanson & Associates, Richmond, Virginia, will give an introduction to the structure, model studies, design, and construction. Richard C. Elstner, partner, Wiss, Janney, Elstner and Associates, Northbrook, Illinois, will discuss the failure and its investigation.

2x2? - William A. Stuart, II, associate, Wiley & Wilson, Inc., Lynchburg, Virginia, will talk about the collapse: a structural analysis.

Mark Fintel, director of engineering design and standards, Portland Cement Association, Skokie, Illinois, will relate the lessons learned and look ahead.

Panel II: Skyline Towers Parking Garage, Bailey's Crossroads, Virginia

Moderator: Russell S. Fling, president, R. S. Fling & Partners, Inc., Columbus, Ohio

Panel: Ned H. Burns, associate professor of civil engineering, University of Texas at Austin, Austin, Texas, will relate the design system of the garage to his research and model test.

2x2 Arthur R. Meenen, Sverdrup & Parcel and Associates, Inc., St. Louis, Missouri, will review the collapse mechanism—Why did it collapse?

Edgar V. Leyendecker, structural research engineer, Building Research Division, National Bureau of Standards, Washington, D.C., will discuss the proposed model test of the parking garage.

Edward Cohen, partner, Ammann & Whitney Consulting Engineers, New York, New York, will present a general discussion on catastrophic loading on flat plates.

Present outline of talk -

Failures of Concrete Structures Parking Towers Garage

women's program

Hospitality: Carolinas Room

schedule:

MONDAY, OCTOBER 28

Afternoon: A special Surprise for all the Women! (Y'all will enjoy this one!)

TUESDAY, OCTOBER 29

Take a coach to famous Underground Atlanta for a guided tour of the City-Beneath-a-City. Luncheon at a choice of two fantastic restaurants at your pleasure. Browse the many shops and boutiques including Lester Maddox's Pick Handle Shop. (You must buy a Lester Maddox Tee Shirt!)

WEDNESDAY, OCTOBER 30

Evening: "Concrete Mixer" social hour.

THURSDAY, OCTOBER 31

Your choice of two tours: **Tour A** takes you to Cyclorama—a memorial of the Battle of Atlanta in sight and sound . . . then to Stone Mountain Park, 3200 acres of scenic beauty and interesting attractions. Stop for a visit to Memorial Hall for a close-up view of the world's largest carving. Walk through the Plantation—an authentic antebellum complex of 19 buildings. Enjoy a Scenic skylift ride to the summit of the mountain for a panoramic view of the countryside—or cruise the lake in a replica of a riverboat. Hear a concert played on the world's largest electronic carillon. Enjoy a specially planned luncheon at the Stone Mountain Inn—a real Southern Treat! **Tour B** takes you off for a day of Southern history and beauty to visit homes of the past, being lived in at the present, and preserved for the future. Tour beautiful Madison, Georgia—a town spared by General William Sherman on his famous March to the Sea. Enjoy Southern hospitality as several families, living in antebellum homes, open their doors to give you a glimpse into the gracious past. Relax over a glass of Southern minted tea served in one of the homes. Tour an interesting antebellum church and museum. Enjoy a specially planned luncheon in a quiet setting, then off for a visit to the Monastery at Conyers for a guided tour of the grounds, greenhouse, and the spectacular modern gothic church built entirely by the Trappist Monks. Browse in their store which features all items made by the Monks.

Morning coffee and light refreshments will be provided, starting at 9:00 a.m. on Monday morning in the Women's Hospitality room. The women will be registered and badges will be typed for them in this room, also.

ATLANTA CONVENTION COMMITTEE

General Chairman

Richard A. Muenow

Law Engineering Testing Company

Secretary-Treasurer

George H. Nelson

Nelson & Associates

Finance Committee

T. Z. Chastain, Chairman

Chastain & Tindel Inc.

Eugene H. Boeke, Jr.

Beers Construction Company

Glen DeLoache

Gifford-Hill & Company

Session Monitors

Russell Brown

Georgia Institute of Technology

Women's Program

Richard Arnold

Atlanta Testing & Engineering Company

Social Events

Donald Musser

Portland Cement Association

Publicity & Membership

Mack Tucker

Georgia Concrete Products Association Inc.

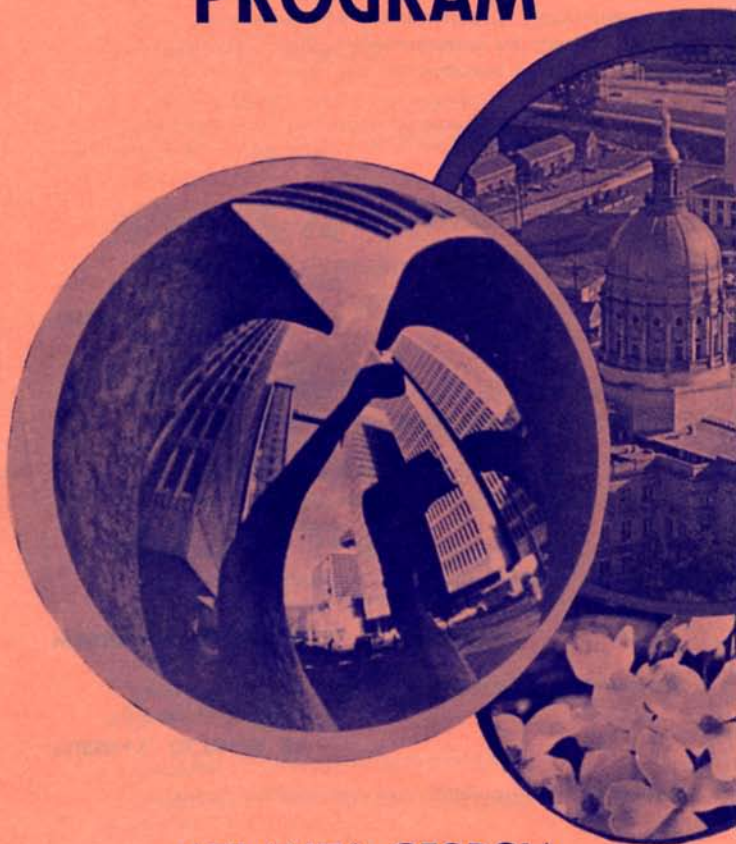
The officers, staff, and members of ACI would like to thank the Local Committee, the Hostesses, the Chapter, and the Contributors for their part in the 1974 Fall Convention.

AMERICAN CONCRETE INSTITUTE



Fall Convention

PROGRAM



ATLANTA, GEORGIA
October 26- November 1
1974
Sheraton-Biltmore

schedule

SUNDAY, OCTOBER 27

2:00 p.m. - 6:00 p.m.

Administrative committee meetings

MONDAY, OCTOBER 28

8:30 a.m. - 6:00 p.m.

Technical, educational, and administrative committee meetings

TUESDAY, OCTOBER 29

8:30 a.m. - 9:00 p.m.

Technical, educational, and administrative committee meetings

WEDNESDAY, OCTOBER 30

8:30 a.m. - 6:00 p.m.

Technical, educational, and administrative committee meetings

9:00 a.m. - 12:00 noon

Symposium on Segmental Bridge Design and Construction (first session) (Committees 423 and 443)

1:30 p.m. - 5:30 p.m.

Symposium on Segmental Bridge Design and Construction (second session) (Committees 423 and 443)

6:30 p.m. - 8:00 p.m.

Concrete Mixer

THURSDAY, OCTOBER 31

9:30 a.m. - 12:00 noon

General Session

2:00 p.m. - 10:00 p.m.

Technical, educational, and administrative committee meetings

2:00 p.m. - 5:00 p.m.

Symposium on Inspection (Committee 311)

7:00 p.m. - 10:00 p.m.

Forum on Research and Development on Determination of Contract Strength, Requirements for Concrete Structures (Committee 114, cosponsored by Committee 214)

7:00 p.m. - 11:00 p.m.

Slab Design and Construction Workshop (Committees E-704 and E-702)

FRIDAY, NOVEMBER 1

9:00 a.m. - 12:00 noon

Session on Construction

9:00 a.m. - 12:00 noon

Lessons Learned from Failures of Concrete Structures

ACI EDUCATIONAL SEMINARS SCHEDULE FOR FALL, 1974

November 5

Using the Strength Design Handbook
Jacksonville, Fla.

November 7

Using the Strength Design Handbook
Tampa, Fla.

November 21-22

Nuclear Power Plant Construction
Philadelphia, Pa.

December 5-6

ACI FUTURE CONVENTIONS

April 6 - 11

1975 Annual Convention
Boston, Massachusetts

November 1 - 7

1975 Fall Convention
Vancouver, B. C., Canada

March 28 - April 2

1976 Annual Convention
Philadelphia, Pennsylvania

October 24 - 29 (tentative)

1976 Fall Convention
Mexico City, Mexico

March 27 - April 1

1977 Annual Convention
San Diego, California

October 16 - 21 (tentative)

1977 Fall Convention
New Orleans, Louisiana

April 9 - 14

1978 Annual Convention
Toronto, Ontario, Canada

October 29 - November 3 (tentative)

1978 Fall Convention
Houston, Texas

ACI FUTURE CONVENTIONS

April 6 - 11

1975 Annual Convention
Boston, Massachusetts

November 1 - 7

1975 Fall Convention
Vancouver, B. C., Canada

March 28 - April 2

1976 Annual Convention
Philadelphia, Pennsylvania

October 24 - 29 (tentative)

1976 Fall Convention
Mexico City, Mexico

March 27 - April 1

1977 Annual Convention
San Diego, California

October 16 - 21 (tentative)

1977 Fall Convention
New Orleans, Louisiana

April 9 - 14

1978 Annual Convention
Toronto, Ontario, Canada

October 29 - November 3 (tentative)

1978 Fall Convention
Houston, Texas