

**AGI**  
**dallas**  
**1972**



8-01474



**PROGRAM**  
68th ANNUAL CONVENTION  
MARCH 5 - 10, 1972  
DALLAS, TEXAS

## BOARD OF DIRECTION

### President

W. J. McCOY

### Vice-Presidents

EDWARD COHEN and ROBERT E. PHILLO

### Directors

HALVARD W. BIRKELAND

BORIS BRESLER

ROGER DIAZ DE COSSIO

FRANK G. ERSKINE

RUSSELL S. FLING

ELMO C. HIGGINSON

JACK R. JANNEY

MICHAEL A. LOMBARD

RICHARD C. MIELENZ

EMIL SCHMID

JAMES E. STANNERS

JOSEPH H. WALKER

### Past Presidents

GRAYDON E. BURNETT

JOSEPH J. SHIDELER

S. D. BURKS

### Executive Director

WILLIAM A. MAPLES\*

*\*American Concrete Institute  
P. O. Box 4754  
Detroit, Michigan 48219*

## TECHNICAL ACTIVITIES COMMITTEE

(In charge of convention program and  
of technical publications)

JOHN F. McLAUGHLIN, Chairman  
W. J. McCOY, Ex Officio  
SAMUEL J. HENRY, Secretary\*  
HALVARD W. BIRKELAND  
JOHN E. BREEN  
T. Z. CHASTAIN  
NOEL J. EVERARD  
RUSSELL S. FLING  
J. A. HANSON  
PAUL KLIEGER  
HOWARD H. NEWLON, JR.  
PETER SMITH

## EDUCATIONAL ACTIVITIES COMMITTEE

(In charge of educational programs)

WILLIAM A. CORDON, Chairman  
W. J. McCOY, Ex Officio  
GILBERT E. SEELEY, Secretary\*  
EMERY FARKAS  
H. ALDRIDGE GILLESPIE  
CLYDE E. KESLER  
JAMES D. PIPER  
DENNIS T. SMITH  
GEORGE B. SOUTHWORTH

*\*American Concrete Institute  
P. O. Box 4754  
Detroit, Michigan 48219*

## GENERAL ACTIVITIES COMMITTEE

(In charge of planning, coordination,  
communications, member services, and  
industry advancement programs)

EMIL SCHMID, Chairman  
W. J. McCOY, Ex Officio  
ROBERT E. WILDE, Secretary\*  
ARTHUR R. ANDERSON  
HALVARD W. BIRKELAND  
S. D. BURKS  
ROGER H. CORBETTA  
ROGER DIAZ DE COSSIO  
RUSSELL S. FLING  
CLYDE E. KESLER  
MICHAEL A. LOMBARD  
ROBERT E. PHILLEO  
FRANCIS J. PRINCIPE  
KENNETH D. SIMMONS

*\*American Concrete Institute  
P. O. Box 4754  
Detroit, Michigan 48219*

# program

## Saturday, March 4

2:00 p.m. — 5:00 p.m.

*Administrative committee meetings*

## Sunday, March 5

9:00 a.m. — 5:00 p.m.

*Administrative committee meetings*

## Monday, March 6

8:30 a.m. — 10:30 p.m.

*Administrative, technical, and educational committee meetings*

7:30 p.m. — 10:30 p.m.

*Workshop on the History of Concrete* Court

## Tuesday, March 7

8:30 a.m. — 10:30 p.m.

*Administrative, technical, and educational committee meetings*

1:00 p.m. — 6:00 p.m.

*Technical-educational exhibits open* Mezzanine

2:30 p.m. — 5:30 p.m.

*Workshop on the Use of Computers* Vista

7:30 p.m. — 10:30 p.m.

*Forum on Adhesives* Embassy Ballroom

## Wednesday, March 8

8:30 a.m. — 11:30 a.m.

*General Session* Junior Ballroom

10:00 a.m. — 6:00 p.m.

*Exhibits open* Mezzanine

2:30 p.m. — 5:30 p.m.

*Research on Plain and Reinforced Concrete (Committee 115)* Junior Ballroom

2:30 p.m. — 5:30 p.m.

*Chapter Forum* Gold

2:30 p.m. — 5:30 p.m.

*Administrative, technical, and educational committee meetings*

6:30 p.m. — 8:00 p.m.

*Concrete Mixer* Grand Ballroom, Hotel Adolphus

## Thursday, March 9

8:30 a.m. — 11:30 a.m.

*Symposium on Models of Concrete Structures (Committee 444)* Embassy Ballroom

8:30 a.m. — 5:30 p.m.

*Workshop/Symposium on Proportioning Concrete Mixes (Committee 211)* Junior Ballroom

8:30 a.m. — 5:30 p.m.

*Administrative, technical, and educational committee meetings*

10:00 a.m. — 6:00 p.m.

*Exhibits open* Mezzanine

12:00 noon

*Awards Luncheon* Grand Ballroom

2:30 p.m. — 5:30 p.m.

*Symposium on New Methods and Materials for Mixing, Transporting, and Placing Mass Concrete (Committees 304/207/USCOLD)* Embassy Ballroom

6:00 p.m.

*Exhibits close*

6:30 p.m.

*Western dinner and square dance.*

*Board buses in front of the hotel.*

## Friday, March 10

8:30 a.m. — 11:30 a.m.

*Symposium on New Methods and Materials for Mixing, Transporting, and Placing Mass Concrete (continued)* Embassy Ballroom

8:30 a.m. — 11:30 a.m.

*Symposium on Response of Buildings to Lateral Forces (Committee 442)* Junior Ballroom

8:30 a.m. — 11:30 a.m.

*Technical committee meetings*

1:30 p.m.

*Construction Tour: Dallas-Fort Worth Airport. Board buses in front of the hotel.*

# convention

## 68th annual convention and exhibition

MARCH 5-10, 1972 at the  
STATLER HILTON  
Dallas, Texas

registration

mezzanine

sunday, march 5 . . . . . 1:00 p.m. to 5:00 p.m.  
monday, march 6 through  
thursday, march 9 . . . . . 8:00 a.m. to 5:30 p.m.  
friday, march 10 . . . . . 8:00 a.m. to 10:00 a.m.

### registration fees:

ACI Members . . . . . \$20.00  
Nonmembers . . . . . \$30.00  
Students . . . . . Free

*Registration fees cover attendance at all ACI technical and educational committee meetings, general sessions, and symposia.*

### notes:

program breakfasts (by invitation only):

tuesday, march 7, 7:00 a.m.

*breakfast for newly appointed chairmen of technical committees. Blue Bonnet Room.*

wednesday, march 8, 7:00 a.m.

*breakfast for program participants in General Session; Research on Plain and Reinforced Concrete; and Symposium on Proportioning Concrete Mixes. Blue Bonnet Room.*

thursday, march 9, 7:00 a.m.

*breakfast for program participants in Symposium on Models of Concrete Structures; Symposium on New Methods and Materials for Mixing, Transporting, and Placing Mass Concrete; and Symposium on Response of Buildings to Lateral Forces. Blue Bonnet Room.*

thursday, march 9, 12:00 noon

*awards luncheon. Everyone is invited! Get your tickets now!*

**Floor Plans on Pages 36 and 37 of Your Program.**

ACI Headquarters and Press Room in the Mezzanine Checkroom.

## contents

feature	page
breakfast for new committee chairmen . . . . .	7
breakfasts for program participants . . . . .	7
program at a glance . . . . .	4
convention registration . . . . .	7
special events . . . . .	8
monday committee meetings . . . . .	10
tuesday committee meetings . . . . .	12
wednesday committee meetings . . . . .	14
thursday committee meetings . . . . .	14
friday committee meetings . . . . .	16
awards luncheon . . . . .	29
floor plan of meeting rooms . . . . .	
general session . . . . .	19
research on plain and reinforced concrete . . . . .	20
symposium on models of concrete structures . . . . .	22
symposium on proportioning concrete mixes — workshop session . . . . .	23
symposium on proportioning concrete mixes — symposium session . . . . .	24
symposium on new methods and materials for mixing, transporting, and placing mass concrete . . . . .	25
symposium on response of buildings to lateral forces . . . . .	27
exhibits guide . . . . .	28
ladies program in brief . . . . .	32
construction tour . . . . .	9
aci awards . . . . .	30
future aci conventions . . . . .	34
aci dallas convention committee . . . . .	33

## special events

**workshop on the history of concrete . . .** Monday, 7:30 p.m., in the Court room. If you're a "history buff" (and even if you're not), come to the workshop on concrete history. It can give you a whole new slant on the concrete industry and how it came to be what it is today. Sponsored by ACI Committee 120, History of Concrete.

**educational-technical exhibits . . .** Tuesday through Thursday on the Mezzanine.

**workshop on the use of computers . . .** Tuesday, 2:30 p.m., in the Vista room. The following topics will be under discussion: Computer Preparation of Contract Documents; Computer Generated Schedules and Specifications, and Data Transfer Methods. Everyone interested in computer applications in the concrete industry are invited to attend. Sponsored by ACI Committee 118, Use of Computers.

**PCA Alumni Association Meeting . . .** Tuesday, 5:00 - 7:00 p.m., in Parlor 404.

**forum on adhesives in concrete . . .** Tuesday, 7:30 p.m., in the Embassy Ballroom. Those interested in cooperative or coordinated research and development on this subject are invited to attend the forum. Sponsored by ACI Committee 114, Research and Development.

**newcomers' breakfast . . .** Wednesday, 7:30 a.m., in the Embassy Ballroom. If this is the first or second (or even the third) ACI Convention you have attended, you are invited to a continental breakfast this morning. ACI officers and staff will be there to welcome you and answer any questions you may have about ACI. Bring your ticket.

**chapter forum . . .** Wednesday, 2:30 p.m., in the Gold room. An informal roundtable on chapter activities and organization. Scheduled by the Board Committee on Chapter Activities.

**"concrete mixer" social hour . . .** Wednesday, 6:30 to 8:00 p.m., in the Grand Ballroom of the Hotel Adolphus. Tickets are \$4 and include cocktails and hot and cold hors d'oeuvres. Get your tickets early!

**awards luncheon and new officer installation . . .** Thursday, 12:00 noon, in the Grand Ballroom. Come meet the awardees and new ACI officers. The luncheon will feature a Cash Bar (and you get one free drink with your ticket). Have fun, enjoy a good lunch, and watch the awards presentation show. Get your ticket early! \$7.00 for cocktail and lunch.

**thursday evening . . .** A real Western hoedown at the Austin Patio Dude Ranch in Grapevine, Texas. Includes chuckwagon dinner and square dance show with audience participation. Come dressed for the occasion (hats, boots, fancy shirts, blue jeans). For those without western attire, free western bandanas will be furnished. We are promised an excellent dinner and a real old-fashioned good time so get your tickets soonest!! \$8.00 complete.

**tour . . .** to the Dallas-Fort Worth Airport, Friday afternoon. See the latest in new construction now going on. The tour will be interesting and educational regardless of your field of interest in the concrete industry. Tickets are now on sale.

**photo display . . .** panels of unusual and outstanding concrete structures, featuring award-winners from ACI Chapters. It's an all-new display never before shown at an ACI Convention. Monday through Friday on the Mezzanine.

**publications display . . .** also on the Mezzanine. All the current ACI publications are there. Orders are taken at the Registration Desk nearby.

# meetings

technical and educational  
committee meetings

COMMITTEE SHORT TITLES ARE IN BOLD FACE. BE SURE TO CHECK THE BULLETIN BOARD FOR LAST MINUTE CHANGES OR ADDED MEETINGS.

**monday, march 6** 8:30 a.m. to 11:30 a.m.

COMMITTEE	MEETING ROOM
117 Tolerances (Tolerance problems existing in ACI publications)	Room 410
222 Corrosion of Metals in Concrete (Paper session and guide)	Room 418
303 Architectural Concrete (Specification draft)	Room 406
305 Hot Weather Concreting (State of the art of pre-cooling concrete)	Vista
313 Bins and Silos	Room 433
316 Construction of Concrete Pavements and Bases	Mustang
340 Ultimate Strength Design Handbook	Court
426 Shear and Diagonal Tension (Committee report; conference session; Building Code revisions)	Embassy West
533 Subcommittee C, Precast Panels (Draft of report on veneer faced panels)	Room 405
546 Repair of Concrete (Review of draft of guide on repair of concrete bridge decks)	Room 414
548 Polymers in Concrete (Symposium on Polymers in Concrete; committee assignments)	Embassy East

2:30 p.m. to 5:30 p.m.

COMMITTEE	MEETING ROOM
114 Research and Development (Recommended research and development projects)	Embassy West
201 Durability of Concrete (Draft of committee report and symposium for 1973)	Vista
211 Proportioning Concrete Mixes (Workshop session and paper symposium)	Blue Bonnet
303 Architectural Concrete (Specification draft)	Room 406
313 Bins and Silos	Gold
316 Construction of Concrete Pavements and Bases	Mustang
340 Ultimate Strength Design Handbook	Court
352 Joints and Connections in Monolithic Concrete Structures	Room 410
408 Bond Stress (Committee report and methods of bond testing)	Embassy East
428 Limit Design (Committee report; reorganization and goals of committee)	Room 418
533 Subcommittee C, Precast Panels (Draft of report on veneer faced panels)	Room 405
546 Repair of Concrete (Review of draft of guide on repair of concrete bridge decks)	Room 414

7:30 p.m. to 10:30 p.m.

COMMITTEE	MEETING ROOM
<b>WORKSHOP SESSION ON HISTORY OF CONCRETE (Committee 120) See Page 17</b>	Court
..... <b>Board Committee on Membership Recruitment</b>	Blue Bonnet
104 Notation	Room 418
116 Nomenclature (Second edition of SP-19, Cement and Concrete Terminology)	Room 410
201 Durability of Concrete (Draft of committee report and symposium for 1973)	Vista
347 Formwork for Concrete	Room 414
512 Precast Structural Concrete (Proposed Recommended Practice)	Mustang
E-703 Manuals of Instruction — Construction (Preparation of encliridions)	Room 406

## MONDAY NOTES:

1. BUY TICKETS FOR THIS COMING WEEK'S EVENTS EARLY.
2. SEE NEW ACI PUBLICATIONS ON DISPLAY NEAR THE REGISTRATION DESK.

tuesday, march 7

8:30 a.m. to 11:30 a.m.

7:30 p.m. to 10:30 p.m.

COMMITTEE	MEETING ROOM
118 Use of Computers (Decision tables; committee reports)	Vista
120 History of Concrete (Future work)	Court
213 Lightweight Aggregate Concretes (Revision of ACI 213 Guide)	Mustang
216 Fire Resistance and Fire Protection of Structures (Guide for determining fire resistance of concrete structural members)	Room 410
304 Measuring, Mixing, Transporting, and Placing Concrete (Future mission, symposia, and Recommended Practice)	Embassy East
318 Subcommittee D, Standard Building Code (Revisions to 318-71)	Room 414
350 Sanitary Engineering Structures (Discussion on committee report published August 1971)	Room 405
435 Deflection of Concrete Building Structures (Progress reports from subcommittees)	Room 433
441 Reinforced Concrete Columns (Subcommittee reports)	Gold
504 Joint Sealants (Revision of 1970 Guide to Joint Sealants for Concrete Structures)	Embassy West
506 Shotcreting (Review of proposed Specification for Shotcreting)	Room 418
533 Subcommittee D, Precast Panels (Draft of subcommittee report)	El Corralito

2:30 p.m. to 5:30 p.m.

COMMITTEE	MEETING ROOM
WORKSHOP SESSION ON THE USE OF COMPUTERS (Committee 118)	
209 Creep and Shrinkage in Concrete (State-of-the-Art Report; Bibliography updating)	Court
213 Lightweight Aggregate Concretes (Revision of ACI 213 Guide)	Mustang
315 Detailing Reinforced Concrete Structures (Proposed amendments to proposed revisions of ACI 315)	Room 414
350 Sanitary Engineering Structures (Discussion on committee report published August 1971)	Room 405
437 Strength Evaluation of Existing Concrete Structures (Outline of Report)	Room 433
438 Torsion (Design recommendation for prestressed concrete members, current research, symposium volume)	Room 410
443 Concrete Bridge Design	Room 406
506 Shotcreting (Review of proposed Specification for Shotcreting)	Room 418
515 Coatings for Concrete (Text of subcommittee reports now in draft)	Embassy West
517 Accelerated Curing of Concrete at Atmospheric Pressure (Drafts of subcommittee chapters; review and prepare for report)	Gold
523 Insulating and Cellular Concretes (Review of Guide; task committee reports on design and inspection)	Embassy East
533 Subcommittee B, Precast Panels (Proposed revisions and updating of committee reports)	Blue Bonnet
E-601 Seminars and Workshops (Seminar program for 1972)	El Corralito

COMMITTEE	MEETING ROOM
FORUM ON ADHESIVES (Committee 114) See page 18	
..... Board Committee on International Activities	Blue Bonnet
214 Evaluation of Results of Strength Tests of Concrete (Revision of existing standard)	Gold
215 Fatigue of Concrete (Forthcoming symposium; committee report)	Vista
301 Specifications for Structural Concrete (ACI 301-72; reorganization of committee)	Silver
309 Consolidation of Concrete (Discussions received on published report; possible amendments; research)	Embassy West
315 Detailing Reinforced Concrete Structures (Proposed amendments to proposed revisions of ACI 315)	Room 414
348 Structural Safety (Avoidance of gross errors in design and construction; safety factors for design of concrete structures)	Embassy East
354 Design Practice	Room 438
437 Strength Evaluation of Existing Concrete Structures (Outline of Report)	Room 433
438 Torsion (Design recommendation for prestressed concrete members; current research; symposium volume)	Room 410
439 High-Strength Reinforcement in Concrete (Committee report revisions; new task discussion of research)	Room 418
532 Lightweight Concrete Masonry (Publication of State of the Art)	Mustang

**TUESDAY NOTES:**

1. VISIT EXHIBITION. OPENS 1:00 P.M., MEZZANINE.
2. SEE THE NEW PHOTO PANELS.
3. IF YOU HAVEN'T GOTTEN YOUR TICKETS YET FOR THE AWARDS LUNCHEON, THE CONCRETE MIXER, OR THE WESTERN HOEDOWN, DON'T DELAY ANY LONGER.



wednesday, march 8 8:30 a.m. to 11:30 a.m.

GENERAL SESSION See Page 19 Junior Ballroom

2:30 p.m. to 5:30 p.m.

RESEARCH ON PLAIN AND REINFORCED CONCRETE (Sponsored by ACI Committee 115.) See Page 20 Junior Ballroom

COMMITTEE	MEETING ROOM
CHAPTER FORUM See Page 18	Gold
207 Mass Concrete	Room 433
309 Consolidation of Concrete (Discussions received on published report; possible amendments; research)	Embassy West
318 Standard Building Code (Revisions to 318-71)	Court
348 Structural Safety (Avoidance of gross errors in design and construction; safety factors for design of concrete structures)	Embassy East
351 Foundations for Equipment and Machinery	Mustang
356 Industrialized Concrete Construction (Subcommittee reports; progressive collapse or catastrophic failure)	Silver
442 Response of Buildings to Lateral Forces (Formation of Subcommittees)	Room 406
524 Portland Cement Plastering (Recommended Practice for Portland Cement Plastering)	Room 405
533 Precast Panels (Final draft of recommended practice; subcommittee reports)	Vista
544 Fiber-Reinforced Concrete (State of the art report; international symposium for October 1973)	Room 410
E-701 Manuals of Instruction — Materials	Room 414
E-704 Manuals of Instruction — Building Code (Drafts of encliridions on 1971 Code)	Room 418

WEDNESDAY NOTES:

1. "CONCRETE MIXER" COCKTAIL HOUR. 6:30 P.M., HOTEL ADOLPHUS. GOT YOUR TICKET?
2. GET YOUR TICKET FOR THE AWARDS LUNCHEON.
3. BUY YOUR TICKETS NOW FOR THE WESTERN HOEDOWN TOMORROW EVENING AND FOR THE CONSTRUCTION TOUR ON FRIDAY AFTERNOON.

thursday, march 9 8:30 a.m. to 11:30 a.m.

SYMPOSIUM ON MODELS OF CONCRETE STRUCTURES (Sponsored by ACI Committee 444.) See Page 22 Embassy Ballroom

WORKSHOP ON PROPORTIONING CONCRETE MIXES (Sponsored by ACI Committee 211.) See Page 23 Junior Ballroom

COMMITTEE	MEETING ROOM
223 Expansive Cement Concretes (Recommended practice; symposium)	Vista
302 Concrete Floor Finishes (Symposium at fall meeting)	Room 414

COMMITTEE MEETING ROOM

311 Inspection of Concrete (Revisions to Inspection Manual)	Gold
318 Standard Building Code (Revisions to 318-71)	Court
336 Combined Footings and Pier Foundations (Reorganization of committee; draft of specifications)	Room 406
345 Concrete Bridge Decks (Recommended Practice for Construction of Concrete Bridge Decks; research needs statement)	Room 410
355 Anchorage to Concrete (Questionnaire and State-of-the-Art Report)	Room 433
423 Prestressed Concrete (Tentative recommendations for post tensioned flat slabs)	Embassy West
503 Adhesives for Concrete (Review of draft of recommended practice; establishment of next objective)	Silver
531 Concrete Masonry Structures (Subcommittee reports)	Mustang
533 Subcommittee A, Precast Panels (Final revisions to Recommended Practice)	Room 405

2:30 p.m. to 5:30 p.m.

SYMPOSIUM ON PROPORTIONING CONCRETE MIXES (Sponsored by ACI Committee 211.) See Page 24 Junior Ballroom

SYMPOSIUM ON NEW METHODS AND MATERIALS FOR MIXING, TRANSPORTING, AND PLACING MASS CONCRETE (Sponsored by Committees 304, 207, and USCOLD Concrete Committee.) See Page 25 Embassy Ballroom

COMMITTEE MEETING ROOM

223 Expansive Cement Concretes (Recommended practice; symposium)	Vista
224 Cracking (Proposed committee report)	Room 418
302 Concrete Floor Finishes (Symposium at fall meeting)	Room 414
318 Standard Building Code (Revisions to 318-71)	Court
332 Residential Concrete Work (Summary; progress to date)	Room 410
333 Composite Construction	Room 433
334 Concrete Shell Design and Construction (Subcommittee reports)	Mustang
423 Prestressed Concrete (Tentative recommendations for post tensioned flat slabs)	Embassy West
444 Models of Concrete Structures (Future activities of the committee)	Blue Bonnet
E-702 Manuals of Instruction — Structural Design (Selection of encliridion topics and potential authors)	El Corralito

THURSDAY NOTES:

1. SEE EXHIBITION AGAIN BEFORE IT CLOSSES AT 6:00 P.M.
2. THE CONSTRUCTION TOUR TO THE DALLAS-FORT WORTH AIRPORT IS TOMORROW. GET YOUR TICKET NOW IF YOU HAVEN'T ALREADY DONE SO.
3. WESTERN DINNER AND SQUARE DANCE WITH AUDIENCE PARTICIPATION (NOT MANDATORY). BUSES LEAVE FROM THE FRONT OF THE HOTEL AT 6:30 P.M.

friday, march 10

8:30 a.m. to 11:30 a.m.

SYMPOSIUM ON NEW METHODS AND  
MATERIALS FOR MIXING, TRANSPORTING,  
AND PLACING MASS CONCRETE  
(Continued.) See Page 26 Embassy Ballroom  
SYMPOSIUM ON RESPONSE OF BUILDINGS  
TO LATERAL FORCES (Sponsored by ACI  
Committee 442.) See Page 27 Junior Ballroom

COMMITTEE

212 Admixtures (Future activities)

MEETING ROOM

Room 405

MONDAY, MARCH 6, 7:30 p.m.

workshop on information gathering  
as related to the history of concrete

*Sponsored by Committee 120*

court room

INTRODUCTION TO THE PHILOSOPHY OF COMMITTEE 120  
— Howard H. Newlon, Jr., Chairman of ACI Committee 120, and  
assistant state highway research engineer, Virginia Highway  
Research Council, Charlottesville, Virginia

INTERACTION WITH EXISTING EFFORTS (ENGINEERING  
RELATED) — Neal FitzSimons, Chairman of ASCE History and  
Heritage Committee, and division director, Systems Evaluation  
Division, Research Office of Civil Defense, Washington, D. C.; and  
Douglas L. Griffin, chief, Historic American Engineering Records,  
National Park Service, Washington, D. C., will lead a discussion to  
include the following:

*ASCE History and Heritage Committee (including ASCE  
Landmarks)*  
*Historic American Engineering Records (HAER)*  
*Historic American Building Surveys (HABS) and National  
Building Register*  
*Society of Industrial Archaeology*  
*Smithsonian Institution*  
*Library of Congress*  
*Local Historical Societies*

This will be descriptive and will show the steps in designating  
significant buildings and documents. Examples will be given.

TECHNIQUES FOR INFORMATION GATHERING — Will  
include demonstrations by means of examples and audience  
participation, proper use of forms for reporting, photography,  
and/or measurements.

*Engineers' Role in Historical Research (Archival and Oral  
Recording)* — Neal FitzSimons, chairman, ASCE History  
and Heritage Committee

*Engineers' Role in Industrial Archaeology* — Emory Kemp,  
Secretary, ACI Committee 120, and professor and chairman  
of civil engineering, West Virginia University, Morgantown,  
West Virginia

TUESDAY, MARCH 7, 7:30 p.m.

## forum on adhesives

*Sponsored by ACI Committee 114*

embassy ballroom

High on the list of the research subjects of most critical importance to the continued advancement of concrete technology is "adhesives in concrete construction." Structural organic adhesives are used for many purposes: bonding plastic concrete to hardened concrete, hardened concrete to hardened concrete; patching; bonding stone veneers and metal accessories to concrete; and floor toppings and terrazzo. Despite wide usage of these adhesives, very little data on performance or service life is available. Therefore, a field survey of the performance of these adhesives would be a great help to the concrete industry. It is intended that this survey be based on chemical composition or performance specifications of the adhesives under study rather than on trade names. In this manner engineers, architects, and contractors might estimate the performance of adhesives under consideration for a given application.

WEDNESDAY, MARCH 8, 2:30 p.m.

## chapter forum

*following the meeting of the Board  
Committee on Chapter Activities*

gold room

It will be an informal round table for chapter officers, members interested in exploring chapter possibilities in their areas, and other members curious about ACI's chapter program. Committee members and headquarters personnel will be there to answer questions about chapter organization.

Any Chapter member attending the Convention is invited to attend the Forum. We are looking forward to representation from every chapter. Other chapters will be interested in what you have been doing in your area. What makes for a successful chapter program? . . . How can chapters aid local construction industry? . . . Educational activities . . . And any other topic you wish to bring before the group.

WEDNESDAY, MARCH 8, 8:30 a.m.

## general session

junior ballroom

*Session Chairman: Sophus Thompson, general chairman, 68th Annual ACI Convention, and designer, Forest and Cotton, Inc., Dallas, Texas*

### Presidential Address

W. J. McCoy, president, ACI, and director, consulting services, Master Builders, Cleveland, Ohio

### "Recommended Practice for Consolidation of Concrete" — A Proposed ACI Standard

ACI Committee 309. Presentation by Thomas J. Reading, chairman, ACI Committee 309, and chief materials engineer, Missouri River Division, U. S. Corps of Engineers, U. S. Army, Omaha, Nebraska

### A Survey of Concrete Bridge and Building Damage from the San Fernando Earthquake

E. O. Pfrang, manager, Housing Technology Programs, Building Research Division, National Bureau of Standards, Washington, D. C.; and John E. Breen, professor of civil engineering, Department of Civil Engineering, University of Texas at Austin, Austin, Texas

### A Review of the Repair of Two Concrete Buildings Damaged by the San Fernando Earthquake

Clarkson W. Pinkham, president, S. B. Barnes & Associates, Los Angeles, California

### Slides as Visual Aids Introduction

John F. McLaughlin, chairman, ACI Technical Activities Committee, and head, School of Civil Engineering, Purdue University, Lafayette, Indiana

### Presentation

Phil J. Walusek, manager, Audio Visual Communications, Portland Cement Association, Skokie, Illinois

WEDNESDAY, MARCH 8, 2:30 p.m.

## research on plain and reinforced concrete

sponsored by ACI Committee 115

junior ballroom

*Session Chairman: Joseph H. Walker, chairman, Committee 115, and vice-president for research and development, Portland Cement Association, Skokie, Illinois*

*Secretary: Herbert K. Cook, secretary, Committee 115, and vice-president of engineering, Master Builders, Cleveland, Ohio*

TEN BRIEF CONFIDENTIAL REPORTS WILL BE FEATURED ON RESEARCH IN PROGRESS. SINCE THIS MATERIAL WILL NOT BE PUBLISHED UNTIL THE RESEARCH PROGRAMS ARE COMPLETED, HERE IS AN IDEAL OPPORTUNITY TO LEARN OF THE LATEST RESULTS FROM ONGOING RESEARCH PROGRAMS.

### Reinforcement Requirements for Inverted T-Beams

Richard W. Furlong, associate professor of civil engineering; Sher Ali Mirza; and John S. Ma, research engineers, The University of Texas at Austin, Austin, Texas

### Pull-Out Strength Tests of Concrete

Owen Richards, consultant, CIPPOC, Inc. — CONAT, Chevy Chase, Maryland

### Laboratory Tests on a Full-Scale Highway Bridge Constructed of Prestressed Concrete Beams, Precast Prestressed Concrete Panel Sub-Deck, and Cast-in-Place Deck

Harry L. Jones, engineering research associate; Howard L. Furr, research engineer; and Eugene Buth, assistant research engineer, Texas Transportation Institute, Texas A&M University, College Station, Texas

### Behavior of Connecting Slabs in Shear Wall Buildings

Joseph Schwaighofer; and Michael P. Collins, associate professors, Department of Civil Engineering, University of Toronto, Toronto, Ontario, Canada

### Polymer Concrete Beams

Maynard O. Serbousek, structural engineer; and Melvin E. Poad, research civil engineer, U. S. Department of the Interior, Bureau of Mines, Spokane Mining Research Center, Spokane, Washington

### The Effect of Volume to Surface Ratio on Behavior of Slender Reinforced Columns Under Sustained Loading

Howard Wu, graduate student; and Mark W. Huggins, professor of civil engineering, Department of Civil Engineering, University of Toronto, Toronto, Ontario, Canada

### Fatigue Test on Reinforced Concrete Two-Way Slabs Models

Michael S. Dallah, associate professor of engineering technology, Department of Engineering Technology, Old Dominion University, Norfolk, Virginia

### Bond Pullout-Dowel Force Interaction in Reinforced Concrete Beam Ends

Richard Jackman, Bachelor of Engineering Honors student; Saeed Mirza, associate professor; and Jules Houdes, PhD Candidate, Department of Civil Engineering and Applied Mechanics, McGill University, Montreal, Quebec, Canada

### A. J. Boase Award of the Reinforced Concrete Research Council

Erick L. Erickson has been selected by the Reinforced Concrete Research Council to receive the 1972 Arthur J. Boase Award "... for encouragement and guidance of research over a period of 25 years as Chief of the Bridge Division of the Bureau of Public Roads, and for the utilization of research to improve engineering practice by the preparation and promulgation of pioneering criteria for the design of prestressed concrete and reinforced concrete highway bridges. . ."

### Anchorage Capacities of Hooked Bars

James O. Jirsa, associate professor of civil engineering, University of Texas at Austin, Austin, Texas; and Jose L. Marques, research assistant, Department of Civil Engineering, Rice University, Houston, Texas

### Nature of the Paste-Aggregate Interface

David Hadley, research engineer, Department of Civil Engineering, Purdue University, Lafayette, Indiana

THURSDAY, MARCH 9, 8:30 a.m.

## symposium on models of concrete structures

Sponsored by ACI Committee 444

embassy ballroom

*Session Chairman: James E. Carpenter, chairman, Committee 444, and senior development engineer, Research and Development Division, Portland Cement Association, Skokie, Illinois*

### Introductory Remarks

James E. Carpenter, session chairman

### A Perspective on Structural Modeling

Richard N. White, associate professor of structural engineering, School of Civil and Environmental Engineering, Cornell University, Ithaca, New York; and James E. Carpenter, senior development engineer, Portland Cement Association, Skokie, Illinois

### Materials for Structural Models

Saeed M. Mirza, associate professor, Department of Civil Engineering and Applied Mechanics, McGill University, Montreal, Quebec, Canada; Richard N. White, associate professor of structural engineering, School of Civil and Environmental Engineering, Cornell University, Ithaca, New York; and Frederic Roll, professor, The Towne School of Civil and Mechanical Engineering, University of Pennsylvania, Philadelphia, Pennsylvania

### Structural Models: Fabrication, Instrumentation and Test Techniques

Weldon W. Aldridge, associate professor, School of Civil Engineering and Environmental Science, University of Oklahoma, Norman, Oklahoma; William L. Gamble, associate professor of civil engineering, Department of Civil Engineering, University of Illinois, Urbana, Illinois; and Gajanan M. Sabnis, senior engineer, Bechtel Corporation, Gaithersburg, Maryland

### Correlation of Models and Prototype Results

Otto C. Guedelhoefer, project engineer, Wiss, Janney, Elstner, and Associates, Northbrook, Illinois

### Panel Discussion

**Moderator:** Frederic Roll, professor, The Towne School of Civil and Mechanical Engineering, University of Pennsylvania, Philadelphia, Pennsylvania

**Panel:** John E. Breen, professor of civil engineering, Department of Civil Engineering, University of Texas at Austin, Austin, Texas

Edward Cohen, partner, Ammann and Whitney, Consulting Engineers, New York, New York

Eivind Hognestad, director, engineering research, Research and Development Division, Portland Cement Association, Skokie, Illinois

R. E. Rowe, director of research and development, Cement and Concrete Association, Wexham Springs, Slough, Bucks., England

THURSDAY, MARCH 9, 8:30 a.m.

## symposium on proportioning concrete mixes

Sponsored by ACI Committee 211

junior ballroom

*Chairman: H. I. King, chief, Standards and Metrication, Department of Industry, Trade & Commerce, Office of Science and Technology, Ottawa, Ontario, Canada*

### workshop session

*Session Chairman: John C. Wycoff, vice-president of engineering, Solite Corporation, Richmond, Virginia*

Presentations on the application of the three ACI standard recommended practices for proportioning concrete mixes: (1) ACI 211.1-70 on proportioning normal weight concrete; (2) ACI 211-65 on proportioning no-slump concrete; and (3) ACI 211.2-69 on proportioning structural lightweight concrete.

Preceding the discussions on each recommended practice, the history or state-of-the-art of proportioning concrete will be given with emphasis on the development of well known relationships of water/cement ratio, absolute volume design, significance of air-entrainment, and the recently adopted proportioning procedure by the unit-weight method.

The intent of the session is to show the simplicity and similarity in proportioning the different types of concrete mixtures. Worksheets will be available to each attendant at the session for the convenience of following each design presentation.

### History of Concrete Proportioning

William A. Cordon, associate professor, Department of Civil Engineering, Utah State University, Logan, Utah

### Proportioning Normal Weight Concrete

John R. Wilson, director, technical services, Cement Division, Martin Marietta Corporation, Baltimore, Maryland

### Proportioning No-Slump Concrete

Paul Klieger, director, Concrete Materials Research Department, Research and Development Division, Portland Cement Association, Skokie, Illinois

### Proportioning Structural Lightweight Concrete

William W. Hotaling, Jr., chief engineer, Expanded Shale, Clay and Slate Institute, Washington, D. C.

THURSDAY, MARCH 9, 2:30 p.m.

## symposium on proportioning concrete mixes

*Sponsored by ACI Committee 211*

junior ballroom

### symposium session

*Session Chairman: Edward J. Hyland, chairman, Subcommittee 5 of ACI Committee 211, and manager, Sales and Engineering, Chicago Fly Ash Company, Chicago, Illinois*

#### Proportioning Normal Weight and Lightweight Structural Concrete Mixtures Using Shrinkage Compensating Expansive Cements

Cedric Willson, vice president, research and development, Concrete Division, Texas Industries, Inc., Arlington, Texas

#### Proportioning of Air-Entrained Concrete

Melville E. Prior, director of technical services, W. R. Grace & Company, Cambridge, Massachusetts; and George W. Hollon, technical field manager, E. W. Zimmerman Construction Chemicals, Inc., La Grange, Illinois

#### Concrete Mix Design for Pumping — The Influences of Material Properties — A Graphical Approach to Optimum Gradation

Francis C. Wilson, consulting engineer, Milwaukee, Wisconsin

#### Proportioning Concrete for a Specific Cement Content and/or for a Specific Unit Weight

Sandor Popovics, professor of engineering and technology, Department of Engineering, Northern Arizona University, Flagstaff, Arizona

#### Gap-Graded Concrete Optimum Mixture Proportioning

Shu-t'ien Li, professor emeritus and consulting engineer; and V. Ramakrishnan, professor of civil engineering, South Dakota School of Mines and Technology, Rapid City, South Dakota

#### Mixture Designs for Mass Concrete Sections

Cecil H. Willetts, concrete engineer, Alabama Power Company, Birmingham, Alabama

#### Reproportioning Mixes Containing Water Reducers

Donald J. Hall, chief, Foundations and Materials Branch, U.S. Army Corps of Engineers, Lower Granite Lock and Dam, Lewiston, Idaho

#### A Method of Proportioning Structural Concrete Mixtures with Fly Ash and Other Pozzolans

C. E. Lovewell, vice president, Sales and Engineering; and E. J. Hyland, manager, Sales and Engineering, Chicago Fly Ash Company, Chicago, Illinois

#### Proportioning and Controlling High-Strength Concrete

Ronald L. Blick, general manager, Engineering and Materialite Sales; Charles F. Petersen, manager, Quality Control Department; and Michael E. Winter, Engineering Sales Department, Material Service Division, General Dynamics, Chicago, Illinois

THURSDAY, MARCH 9, 2:30 p.m.

## symposium on new methods and materials for mixing, transporting, and placing mass concrete

*Sponsored by ACI Committees 207 and 304, and USCOLD Concrete Committee*

embassy ballroom

*Session Co-Chairman: Donald L. Houghton, chairman, ACI Committee 304, and supervising civil engineer, U. S. Army Engineer Division, North Pacific, Portland, Oregon*

*Session Co-Chairman: Donald J. Hall, chairman, Subcommittee III, ACI Committee 304, and chief, Foundations and Materials Branch, U. S. Army Corps of Engineers, Lower Granite Lock and Dam, Lewiston, Idaho*

#### The Ultimate Gravity Dam

Jerome M. Raphael, professor of civil engineering, Division of Structural Engineering and Structural Mechanics, University of California, Berkeley, California

#### Compaction of Mass Concrete with Vibratory Roller

R. W. Cannon, senior civil design engineer, Research and Development, Tennessee Valley Authority, Knoxville, Tennessee

#### Lowering the Cost of Concrete Dams by Elimination of Joints

Roy W. Carlson, research associate, University of California, Berkeley, California

#### Plant and Procedure Concept for Rapid Construction of Concrete Dams

John W. Leonard, chief engineer, Morrison-Knudsen Company, Inc., Boise, Idaho

#### Use of Concrete of Low Portland Cement Content in Combination with Pozzolans and Admixtures in Construction of Concrete Dams

Bryant Mather, supervisory research civil engineer, Concrete Division, Corps of Engineers, Vicksburg, Mississippi

#### Steering Committee for Symposium on New Methods and Materials for Mixing, Transporting, and Placing Mass Concrete

Donald L. Houghton, chairman, ACI Committee 304

R. W. Cannon, chairman, ACI Committee 207

William R. Waugh, chairman, USCOLD Concrete Committee

Donald J. Hall, chairman, Subcommittee III, ACI Committee 304

FRIDAY, MARCH 10, 8:30 a.m.

symposium on new methods  
and materials for mixing, transporting,  
and placing mass concrete

*Sponsored by ACI Committees 207 and 304, and USCOLD  
Concrete Committee*

embassy ballroom

*Session Co-Chairman: Donald L. Houghton, chairman, ACI  
Comm*  
*Committee 304, and supervising civil  
engineer, U. S. Army Engineer Division,  
North Pacific, Portland, Oregon*

*Session Co-Chairman: Donald J. Hall, chairman, Subcommittee  
III, ACI Committee 304, and chief,  
Foundations and Materials Branch, U. S.  
Army Corps of Engineers, Lower Granite  
Lock and Dam, Lewiston, Idaho*

**Continuous Vertical Placement of Mass Concrete**  
William R. Waugh, consultant, Arlington, Virginia

**Formwork Concepts for Rapid Construction of  
Concrete Dams**  
Chester I. Williams, president, Williams Form Engineering  
Corporation, Grand Rapids, Michigan

**Use of Regulated-Set Cement and  
Expansive Cement in Mass Concrete**  
George J. Verbeck, director, Materials Research, Research and  
Development Division, Portland Cement Association, Skokie,  
Illinois

**Problems Attending Use of Higher  
Strength Concrete in Thin Arch Dams**  
Merlin D. Copen, head, Concrete Dams Section, Division of  
Design, U. S. Bureau of Reclamation, Denver, Colorado

**Computerized Concrete Control at Large Projects**  
Jerry D. Richards, civil engineer; and Elwood L. Ore, formerly  
supervisory materials engineer, U. S. Bureau of Reclamation,  
Denver, Colorado

FRIDAY, MARCH 10, 8:30 a.m.

symposium on response  
of buildings to lateral forces

*Sponsored by ACI Committee 442*

junior ballroom

*Session Chairman: James G. MacGregor, professor of civil  
engineering, Department of Civil Engineering,  
The University of Alberta, Edmonton,  
Alberta, Canada*

**Tubular Structures**  
Fazlur R. Khan, partner and chief structural engineer, Skidmore,  
Owings and Merrill, Chicago, Illinois

**Resistance to Earthquakes — Philosophy,  
Ductility and Details**  
Mark Fintel, director, Engineering Services Department, Portland  
Cement Association, Skokie, Illinois

**Design of Concrete Shear Walls for  
Earthquake Forces**  
Paul F. Fratessa, associate, H. J. Degenkolb & Associates, San  
Francisco, California

**Optimum Design Approach for High-Rise  
Concrete Buildings**  
Hal S. Iyengar, associate partner and senior project engineer; and  
Fazlur R. Khan, partner and chief structural engineer, Skidmore,  
Owings and Merrill, Chicago, Illinois

**Design of Shearwalls for Ductility**  
C. Michael Allen, structural design engineer, Adjeleian and  
Associates Ltd., Ottawa, Ontario; Leslie G. Jaeger, dean of  
engineering, University of New Brunswick and associated  
consultant, Adjeleian and Associates Ltd.; and V. Charles Fenton,  
chief structural design engineer and associate, Adjeleian and  
Associates Ltd., Ottawa, Ontario, Canada

**Continuous Approximation of Large  
Regular Frameworks and the Problem  
of a Substitute Frame**  
Zdenek P. Bazant, associate professor of civil engineering; and  
Martin Christensen, graduate research assistant, Department of  
Civil Engineering, Northwestern University, Evanston, Illinois

# exhibition

mezzanine

## hours:

*Tuesday, 1:00 p.m. to 6:00 p.m.*  
*Wednesday, 10:00 a.m. to 6:00 p.m.*  
*Thursday, 10:00 a.m. to 6:00 p.m.*

## exhibitors:

**Adhesive Engineering Co.** – Structural concrete bonding process using epoxy systems to restore integrity.

**Associated Spring Corporation, Concrete Accessories Division** – Concrete accessories for concrete products, post tensioning, paving, and the construction industry.

**Concrete Testing Supplies, Inc.** – Cylinder molds.

**Erico Products, Inc.** – Mechanical splices for reinforcing bars.

**Fegles-Power Service, Inc.** – Slipform concrete construction.

**Free-Tie Corporation** – Removable, reusable form tie rods applicable to architectural concrete and gang forming.

**MTS Systems Corporation** – Controlled concrete fracture with closed-loop electrohydraulic test machines.

**Manufactured Construction Products Inc.** – Manufactured construction products.

**Master Builders** – Pozzolite admixture for improving concrete.

**National Ash Association, Inc.** – Coal ash products and literature.

**PPG Industries, Inc.** – Curing agents and concrete preservatives.

**Protex Industries, Inc.** – Admixtures and allied products.

**Sika Chemical Corporation** – Adhesives, admixtures, sealants, surface treatments.

**Teledyne Terrametrics** – In Situ instruments for concrete, soil, and rock.

**Thermex Metallurgical, Inc.** – Process for the welding of rebars.

THURSDAY, MARCH 9, 12:00 NOON

# awards luncheon

grand ballroom

Come meet the awardees and new ACI officers at noon. The luncheon will feature a Cash Bar. Have fun, enjoy a good lunch, and watch the awards presentation show.

## awards program:

### Honorary Memberships:

Arthur R. Anderson  
Fritz Leonhardt

### Henry C. Turner Medal:

George Winter

### Alfred E. Lindau Award:

Phil M. Ferguson

### Henry L. Kennedy Award:

Edward G. Nawy

### Charles S. Whitney Award:

Research and Development Laboratories,  
Portland Cement Association

### Wason Medal for Research:

G. L. Kalousek  
E. J. Benton

### Wason Medal for Most Meritorious Paper:

James G. MacGregor  
John E. Breen  
Edward O. Pfrang

### Raymond C. Reese Structural Research Award:

James G. MacGregor  
John E. Breen  
Edward O. Pfrang

### Distinguished Service Award:

Albyn Mackintosh  
Robert E. Price  
Hector I. King  
Peter Smith

### Recognition of Retiring Officers

### Report of Tellers

### Introduction of New Officers

### New President's Address

### Presentation of Memento to Retiring President



# ACI AWARDS FOR 1972

## Honorary Memberships

**Arthur R. Anderson** . . . For outstanding service to the Institute and innovations in the translation of theory to practice in the building of concrete structures.

**Fritz Leonhardt** . . . For world-wide eminence in teaching, research, and design of concrete structures.

## Henry C. Turner Medal

**George Winter** . . . For notable achievement in and service to the concrete industry in the fields of research, education, writings, and through leadership in the Building Code Committee.

## Alfred E. Lindan Award

**Phil M. Ferguson** . . . For major contributions to reinforced concrete design practice through imaginative research, effective service on technical committees, and publications, including an outstanding textbook.

## Henry L. Kennedy Award

**Edward G. Nawy** . . . In recognition of outstanding service in technical and administrative committee work, and his leadership in chapter activities of the American Concrete Institute.

## Charles S. Whitney Award

**The Research and Development Laboratories of the Portland Cement Association** . . . For noteworthy work in research and development which has outstandingly added to knowledge and increased the usefulness of concrete.

## Wason Medal for Research

**G. L. Kalousek and E. J. Benton** . . . For their paper, "Mechanism of Seawater Attack on Cement Pastes," ACI JOURNAL, Proceedings V. 67, No. 2, February 1970, pp. 187-191.

## Wason Medal for Most Meritorious Paper

**James G. MacGregor, John E. Breen, and Edward O. Pfrang** . . . For their paper, "Design of Slender Concrete Columns," ACI JOURNAL, Proceedings V. 67, No. 1, January 1970, pp. 6-28.

## Raymond C. Reese Structural Research Award

**James G. MacGregor, John E. Breen, and Edward O. Pfrang** . . . For their paper, "Design of Slender Concrete Columns," ACI JOURNAL, Proceedings V. 67, No. 1, January 1970, pp. 6-28.

## Distinguished Service Award

**Albyn Mackintosh** . . . Chairman, Committee 531, Concrete Masonry Structures - 1966-1972; Contributed substantially to completion of committee report, "Concrete Masonry Structures - Design and Construction," Title 67-23, May, June 1970, ACI JOURNAL.

**Robert E. Price** . . . Chairman, Committee 517, Accelerated Curing of Concrete at Atmospheric Pressure - 1967-1970; Contributed to ACI Standard 517-70, "Recommended Practice for Atmospheric Pressure Steam Curing of Concrete;" Secretary and now Chairman, Committee 223, Expansive Cement Concretes and contributed to their report "Expansive Cement Concrete - Present State of Knowledge," Title 67-35, August 1970, ACI JOURNAL.

**Hector I. King** . . . Chairman, Committee 211, Proportioning Concrete Mixes - 1969-1972; Contributed to revised ACI Standard 211.2-69, "Recommended Practice for Selecting Proportions for Structural Lightweight Concrete;" Helped prepare the workshop/symposium "Proportioning Structural Lightweight Concrete" for presentation at this convention; Member Committee 532, Lightweight Concrete Masonry.

**Peter Smith** . . . Chairman, Committee 504, Joint Sealants - 1968-1972; Contributed to the report, "Guide to Joint Sealants for Concrete Structures," Title 67-31, July 1970, ACI JOURNAL; Led the sponsorship of a convention session, "Sealing Joints in Concrete Structures" in Denver, March 1971; Member, Committee 201 and the Technical Activities Committee.

# ladies' program

## Monday, March 6

9:00 a.m. - 4:00 p.m.

*Hospitality  
Registration*

## Tuesday, March 7

9:00 a.m.

*Hospitality  
Registration*

*"Ladies Option" - Walking Tour*

*Shopping*

*Museums*

*North Park*

*Quadrangle*

*Neiman-Marcus, Lunch Zodiac Room  
(Dutch Treat)*

## Wednesday, March 8

9:00 a.m.

*Hospitality*

10:30 a.m.

*Dallas Scenic Tour - \$5.00*

*John F. Kennedy Memorial*

*Frank Lloyd Wright Theatre Center*

*Lunch (favors), Southern Methodist University*

*Owens Fine Arts Center*

*Bob Hope Theatre*

12:00 noon

*Awards Luncheon - \$7.00*

*Tickets available at Convention Registration Desk.*

6:30 p.m.

*"Concrete Mixer" cocktail hour - \$4.00*

*Tickets available at Convention Registration Desk.*

## Thursday, March 9

9:00 a.m.

*Hospitality*

10:15 a.m.

*Province House, Richardson - \$5.00*

*Luncheon and Style Show*

*"The Miracle at Pentecost"*

6:30 p.m.

*Austin Patio Dude Ranch - \$8.00*

*(Ticket required.)*

## Friday, March 10

10:00 a.m.

*Hospitality*

# DALLAS CONVENTION COMMITTEE

**Honorary Chairman**

CEDRIC WILLSON

**General Chairman**

SOPHUS THOMPSON

**Co-Chairman**

JOE V. WILLIAMS

**President, North East Texas Chapter, ACI**

JACK ROSENLUND

**Treasurer**

C. GLENN BARNES

**Technical Program**

NOEL EVERARD

**Secretary**

J. R. JOINER

**Finance Committee**

JOHN L. TANNER, III

**Arrangements Committee**

BILL RURY

**Publicity Committee**

TERRELL R. HARPER

**Transportation Committee**

EUGENE W. PALMER

**Professional Committee**

ALFRED P. HELM

**Ladies' Committee**

**General Chairman**

MRS. CEDRIC WILLSON

**Hospitality Chairman**

MRS. LLEWELLYN POWELL

**Social Chairman**

MRS. JOE WILLIAMS

**Tour Chairman**

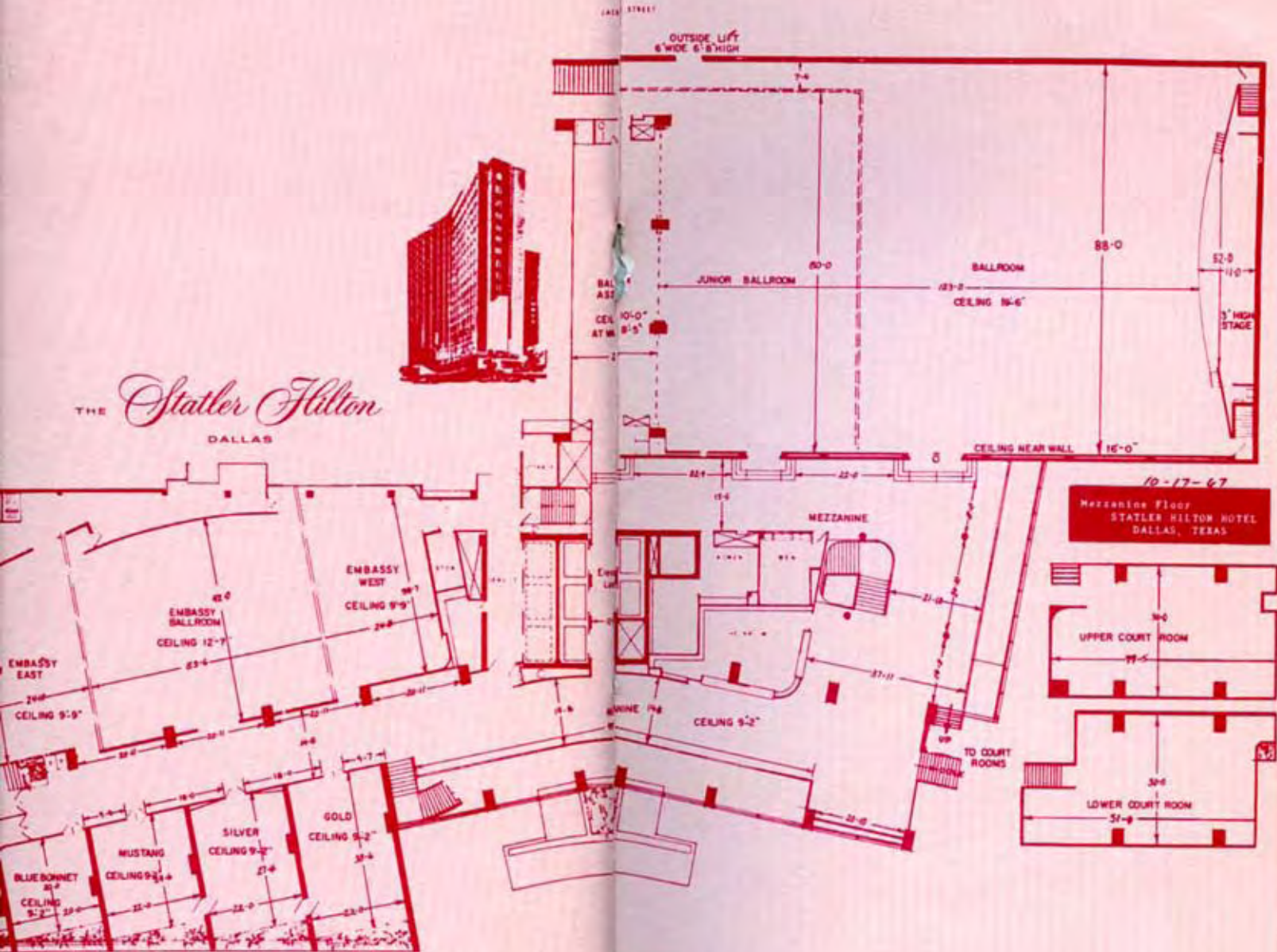
MRS. J. E. ROSENLUND

## future conventions

- 1972 – October 28 – November 3  
*Diplomat Resort and Country Club*  
Hollywood, Florida
- 1973 – March 3-9  
*Chalfonte-Haddon Hall*  
Atlantic City, New Jersey
- 1973 – October 6-12  
*Chateau Laurier*  
Ottawa, Ontario, Canada
- 1974 – March 30 – April 5  
*Sheraton-Palace Hotel*  
San Francisco, California
- 1974 – October 26 – November 1  
*Sheraton-Biltmore Hotel*  
Atlanta, Georgia



THE *Statler Hilton*  
DALLAS



10-17-67  
MEZZANINE FLOOR  
STATLER HILTON HOTEL  
DALLAS, TEXAS

SHAWNEE STREET

ST. PAUL STREET

