

Products & Practice

Makita Diamond Blades

Makita Diamond Blades are optimized for use with battery-powered grinders and power cutters and come in three variations: Ultra-Thin Kerf Blades, Segmented Turbo Blades, and All-Cut Blades. Features include redesigned cutting surfaces that deliver faster cutting speeds, more cuts per charge, and longer blade life. The Diamond Blades lineup includes 4-1/2, 5, 7, 9, 12, and 14 in. (114, 127, 178, 229, 305, and 356 mm) blades. The range in sizes allows users to perform cutting tasks in a variety of materials including masonry, block, roof tiles, pavers, and reinforced concrete. The Ultra-Thin Kerf Blades are available in 4-1/2, 5, 7, 9, 12, and 14 in. These blades are optimized for use with battery power tools, offering reduced motor drag and more cuts per charge. Segmented Turbo Blades are available in 4-1/2, 5, and 7 in. blades sizes. These blades feature turbo groove segments that reduce friction and deliver faster cuts, while taller cutting segments provide a longer blade life. All-Cut Blades are available in 14 in. These blades feature a Turbo M-Notch to aggressively remove material for faster cuts, and an Undercut Segment to increase durability for longer blade life. The blades also feature an optimum bond matrix.



—Makita U.S.A., Inc., www.makitatools.com

Aquajet Super Lance System

The Aquajet Super Lance System increases the versatility of its line of Aqua Cutters by allowing for several configurations. The system includes multiple parts—such as elbows, lance extensions, and different nozzle options—to give operators more control over the concrete removal depth. Elbows can help operators navigate obstacles, while lance extensions can be stacked to create the correct length required for the application. The dual/triple nozzle head is compatible with all lances and lance extensions, elbows, and Rotolances. The nozzle heads split the waterjet to impact the concrete at multiple points, allowing it to cover more surface area in each pass. The dual and triple nozzles feature Aquajet’s Laminar Flow Director (LFD) that eliminates all forms of turbulence before water enters the nozzles. The Super Lance System is compatible with Aquajet’s ceramic nozzles engineered for durability.



—Aquajet, <https://aquajet.se>

Georgia Boot Core 37

The Georgia Boot Core 37 work boot keeps feet dry and comfortable for long hours on and off the jobsite. The boot is made with a cement construction and features antique brass hardware. The upper is crafted in full-grain leather with a textile detail. The boots are available in either soft toe or steel toe for protection. The interior of the Core 37 has an advanced memory polyurethane (AMP) insole for cushioning and shock absorption as well as the Georgia Waterproof System to keep feet dry in wet conditions. The foundation of this work boot starts with a steel shank for added support and durability, followed by a heat, chemical, abrasion, and slip-resisting Carbo-Tec Rubber Outsole. The Core 37 meets ASTM F2413 electrical hazard standards for soft-toe work boots.



—Georgia Boot, www.georgiaboot.com

Products & Practice

Cattron Tyro 2S

Cattron announced the North American availability of the Tyro 2S line of wireless remote-control systems. With IP65 to IP68 ratings, Tyro 2S systems are resistant to shock, impact, dust, moisture, and water. Customers can personalize their transmitters with specific icons and symbols that match their equipment's control interfaces, enhancing safety and ease of use. The Tyro 2S product line includes transmitters (Musca, Pyxis, Cetus, and Fornax) and receivers (Aquarius, Auriga, and Scorpius). Handheld transmitters feature industrial-grade housings to withstand being dropped. Most receivers feature durable, potted waterproof solid-state circuit boards within impact-resistant housings. The Tyro 2S systems offer features, such as one-button pairing, allowing operators to quickly pair a new transmitter with the receiver, minimizing downtime. Additionally, the systems support multiple transmitters per receiver and vice versa, providing multiple users with flexibility in their operations. The Tyro 2S systems are available with an LCD screen that displays real-time feedback from the connected equipment. The integration with CANbus systems allows for seamless communication between the remote control and the machinery. Machine-to-machine (M2M) programming is also possible.



—Cattron, www.cattron.com

Bosch Floor Removal Cart and 12V Max Connected Thermal Camera

The Bosch Floor Removal Cart (GHT130) has a robust design that supports the weight of the jackhammer, reducing strain and fatigue. The ergonomic angle adjustment options allow the hammer to be positioned at five different angles, maximizing efficiency. The Removal Carts star knob mounting system allows for the hammer to be easily installed and removed.

The 12V Max Connected Thermal Camera (GTC600C) can store up to 500 sharp, clear thermal images across a wide scope of applications and trades, with a broad measuring range of -4 to 1112°F (-20 to 600°C). Its intuitive user interface is designed to deliver successful results in minimal clicks. The built-in mic and speaker allow for smart voice note functionality to record, store, and transfer up to 350 notes on the job.

—Bosch, www.boschtools.com



DokaXact Load & Pressure Sensors

Wireless DokaXact sensors are tough, waterproof, dustproof, and can be easily connected to a smartphone with Bluetooth. DokaXact Load sensors offer a solution for monitoring formwork loads. The sensors are designed for straightforward installation on standard tie systems, providing reliable data on tie loads. The DokaXact Pressure sensors are designed for monitoring fresh concrete pressure. Installation is quick and easy because it can be mounted directly on plywood and requires only a 26 mm (1 in.) hole. The data from both sensors is visualized in real time in the DokaXact app. The user interface allows for simple and independent operation from a smartphone. The DokaXact web portal also provides detailed information and transparent project documentation. The DokaXact sensors are ideal for use in the energy sector, in residential or commercial construction, and in projects with critical anchor loads or high, single-sided walls or pillars.

—Doka, www.doka.com



KEEN Utility Cincinnati

KEEN Utility Cincinnati is a heavy-duty and lightweight work boot. Features include an air-infused Lufttcell midsole for comfort, an electrical hazard (EH)-rated rubber outsole to improve traction, and barnyard resistant leather to protect feet from variables on the worksite. Additional safety features include carbon-fiber toes that provide an unobtrusive fit and are 15% lighter than steel, along with continuous Goodyear welt construction for enhanced durability under harsh work conditions. To maximize comfort, the Cincinnati also offers shellback heel support and a removable polyurethane (PU) footbed with pillow-top cushioning. The Cincinnati is available in two different colors and collar heights as well as a soft-toe option.

—KEEN, www.keenfootwear.com



Products & Service Literature & Videos

ANSI/ASSP A10.50-2024, Heat Stress Management in Construction and Demolition Operations

by The American Society of Safety Professionals

The American Society of Safety Professionals (ASSP) published a national voluntary consensus standard addressing heat stress for workers in construction and demolition operations. ANSI/ASSP A10.50-2024, Heat Stress Management in Construction and Demolition Operations, offers guidance on protecting workers; explains how to acclimate workers to high-heat conditions; and provides requirements for training employees and supervisors. The standard contains checklists and flowcharts designed to help companies develop clear and effective heat stress-management programs that bridge the regulatory gap. The A10.50 standard identifies engineering and administrative controls companies can implement to ensure that workers get proper rest, water breaks, and shade—while still meeting business needs. The A10.50 subcommittee that wrote the standard consisted of 30 safety and health experts from businesses, trade unions, consulting firms, universities, and government agencies. While the scope of the standard focuses on construction and demolitions, the guidance can be easily adapted to protect workers performing other outdoor jobs. ANSI/ASSP A10.50-2024 can be purchased at ASSP's online store.

—American Society of Safety Professionals, www.assp.org

Web Notes

Spec Formliners New Website

Spec Formliners launched its redesigned website. The updated platform is tailored to meet the needs of contractors and architects, enabling them to easily access vital information for their projects. With over 400 unique designs and growing, the website offers a large selection of design solutions for the industry. Spec Formliners' user-friendly and intuitive user interface simplifies the search process, allowing visitors to navigate through the library of designs and products with ease. Architects and contractors can explore an extensive range of design options, crafted to cater to diverse project requirements. The website provides a wide range of valuable resources, such as project showcases, technical specifications, and installation guidelines.

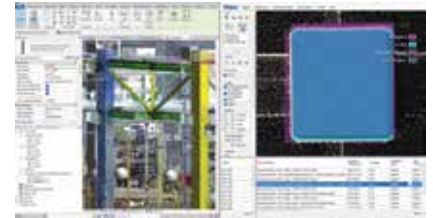
—Spec Formliners, Inc., www.specformliners.com

Product Showcase

Design and Inspection Tools

ClearEdge3D Verity 2.0

ClearEdge3D announced the launch of Verity 2.0. This new version offers enhancements to 1.0, including an integration with Autodesk® and Revit®. Verity 2.0 is designed to transform quality assurance/quality control (QA/QC) workflows, boost modeling accuracy, and reduce building construction project risk for architecture, engineering, and construction (AEC) industry firms, therefore aiding in the prevention of installation or modeling errors from creating costly downstream impacts, such as redesign, reengineering, and rework. This version offers the user advanced computer vision technology to directly compare point cloud data with building information modeling (BIM) models in Revit, ensuring the accuracy of as-built models. The user can also quickly generate heat maps and color-coded reports to pinpoint deviations, bending, or deflection. Verity 2.0 analysis ensures that design models match existing conditions or that they accurately reflect the as-built state using intuitive QA/QC tools.



—ClearEdge3D, Inc., www.clearedge3d.com

Command Alkon Load Assurance

Command Alkon announced Load Assurance software and in-drum sensor technology. This feature offers complete visibility into concrete properties, improving overall project outcomes while enhancing safety, reducing material waste, and saving time. Load Assurance uses direct contact, in-drum technology to measure concrete properties throughout the delivery process. Sensor data, including slump, temperature, volume, water additions, water-cement ratio, drum rotation, direction for each load, and air content, are transmitted to Command Cloud in real time. Load Assurance has end-to-end connectivity with related technologies for ready mixed concrete production, dispatch, quality control, and fleet management. The ability to trace concrete properties through real-time monitoring allows for tighter water control, leading to reduced cement use per yard and a decrease in the standard deviation of compressive strength. The sensor data provided by Load Assurance enhances visibility into the properties of materials, enabling the reuse of returned materials. Dispatchers can make informed decisions about material reuse based on accurate returning volume, extra water, and temperature data.

—Command Alkon, <https://commandalkon.com>

Topcon LN-50

Topcon Positioning Systems launched the LN-50 three-dimensional (3-D) laser, an addition to the LN layout navigator family of instruments. Intended to be an affordable and easy-to-use solution for digital layout, the LN-50 has a 50 m (164 ft) range. The LN-50 is designed for homebuilders; mechanical, electrical, and plumbing (MEP) trades; concrete contractors; and others—regardless of their digital technology experience—to achieve high-speed precision in their measuring and layout work, mitigating the risk of errors that can lead to costly rework. The LN-50 works exclusively with Topcon Digital Layout building construction software. The software is compatible with computer-aided design (CAD) and building information modeling (BIM) software setups and can be used with the Point Manager plug-in for Autodesk Revit or AutoCAD.



—Topcon Positioning Systems, Inc., www.topconpositioning.com

Graphisoft Archicad AI Visualizer

Graphisoft introduced the Archicad AI Visualizer. Powered by Stable Diffusion, Archicad AI Visualizer creates detailed three-dimensional (3-D) visualizations during the early design stages with a simple user interface optimized for architecture and interior design. Archicad AI Visualizer is available to all architects and interior designers interested in exploring the future of artificial intelligence (AI)-powered architectural visualization and providing feedback on their experience. Archicad AI Visualizer is integrated into Archicad, so no additional purchase is necessary. Users create a simple concept model in Archicad. Then, using text prompts or a few descriptive words, they can generate any number of refined design variations—without creating detailed models for each. The tool produces design alternatives in the early design phase by adding details, context, and ideas to the original concept. The interface is easy to use, and prompts and results are optimized for architectural and interior design workflows. Users can specify image sizes, vary the number of iterations to speed up image generation, and edit the prompt strength for more precise results.

—Graphisoft, <https://graphisoft.com>



HUNDREDS OF Concrete Standards, Recommended Practices, and Courses Available

The American Concrete Institute has been developing industry-leading resources on concrete for over 100 years. With topics ranging from reinforced concrete design, repair practices, and chemical admixtures to concrete construction practices specific in hot-weather climates and more, visit www.concrete.org for immediate access to ACI's standards, recommended practices, and free online presentations, plus on-demand courses from ACI University.



American Concrete Institute
Always advancing



www.concrete.org