

# Hidden Peak Snowbird Resort

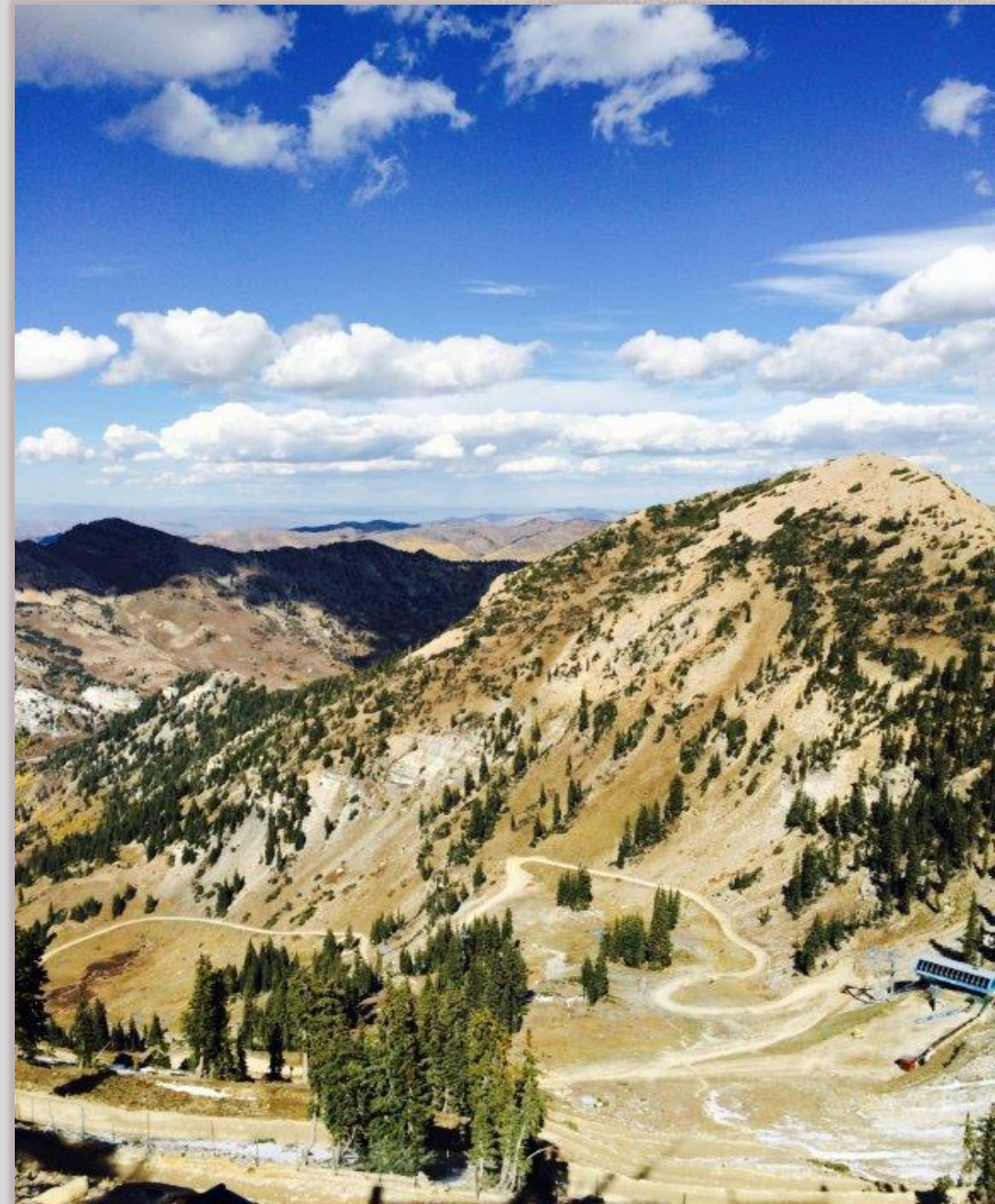
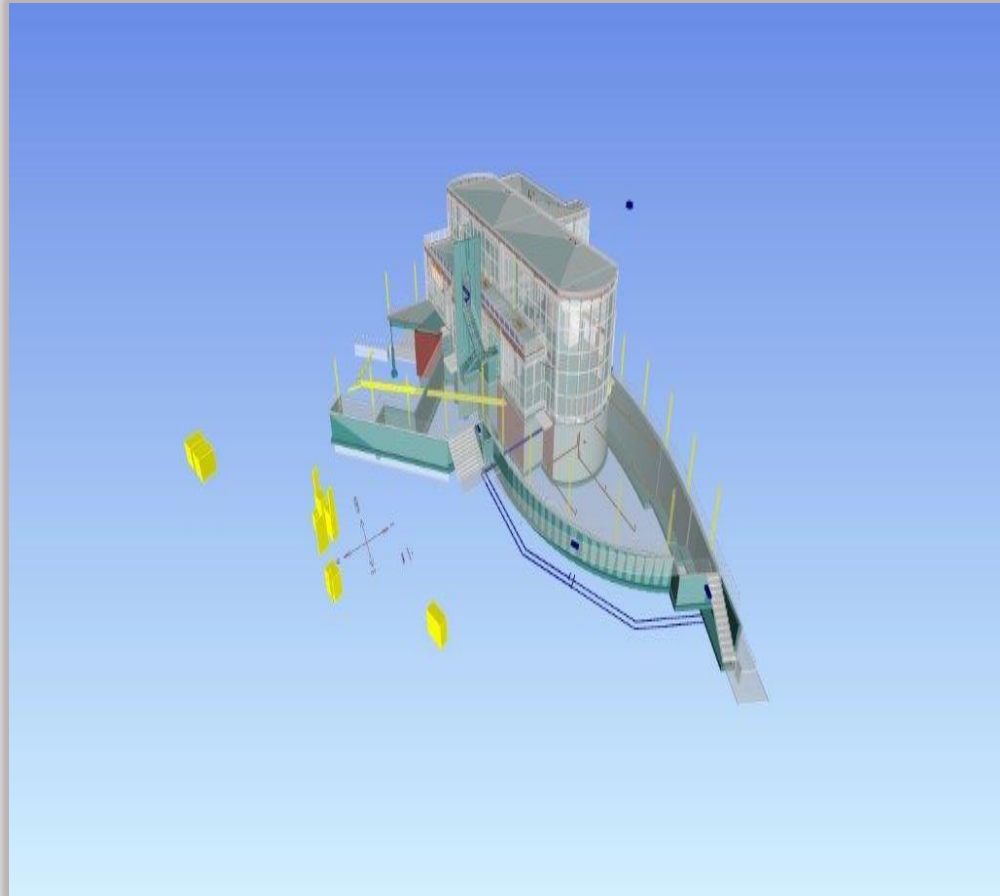
Layton Construction &  
Altaview Concrete





# VISION OF PROJECT

- 11,000 feet...what a view!







# START OF CONSTRUCTION

- Hauling equipment to site
- Snowbird mountain ops







## **TRANSPORTATION OF EMPLOYEES TO SITE**







# TRAINING OF READY MIX DRIVERS

- Timing was excellent
- Drivers & trucks hand-selected from fleet
- Scheduling of selected drivers







# DRIVING SAFELY

- Mountain driving
- T.R.A.C.K. (KUCC)
- Safety

## USE T.R.A.C.K ON EVERY JOB

**THINK** through the task  
**RECOGNIZE** the hazards  
**ASSESS** the risks  
**CONTROL** the hazards  
**KEEP** safety in mind in all tasks







# TRAINING CONTINUED

- Dry runs
- Roads cut as needed
- Delivery navigation







# BEDROCK FOOTINGS

- Difficult preparation & setup
- Ordering of concrete
- Additional yardage orders & no Eco-Pan

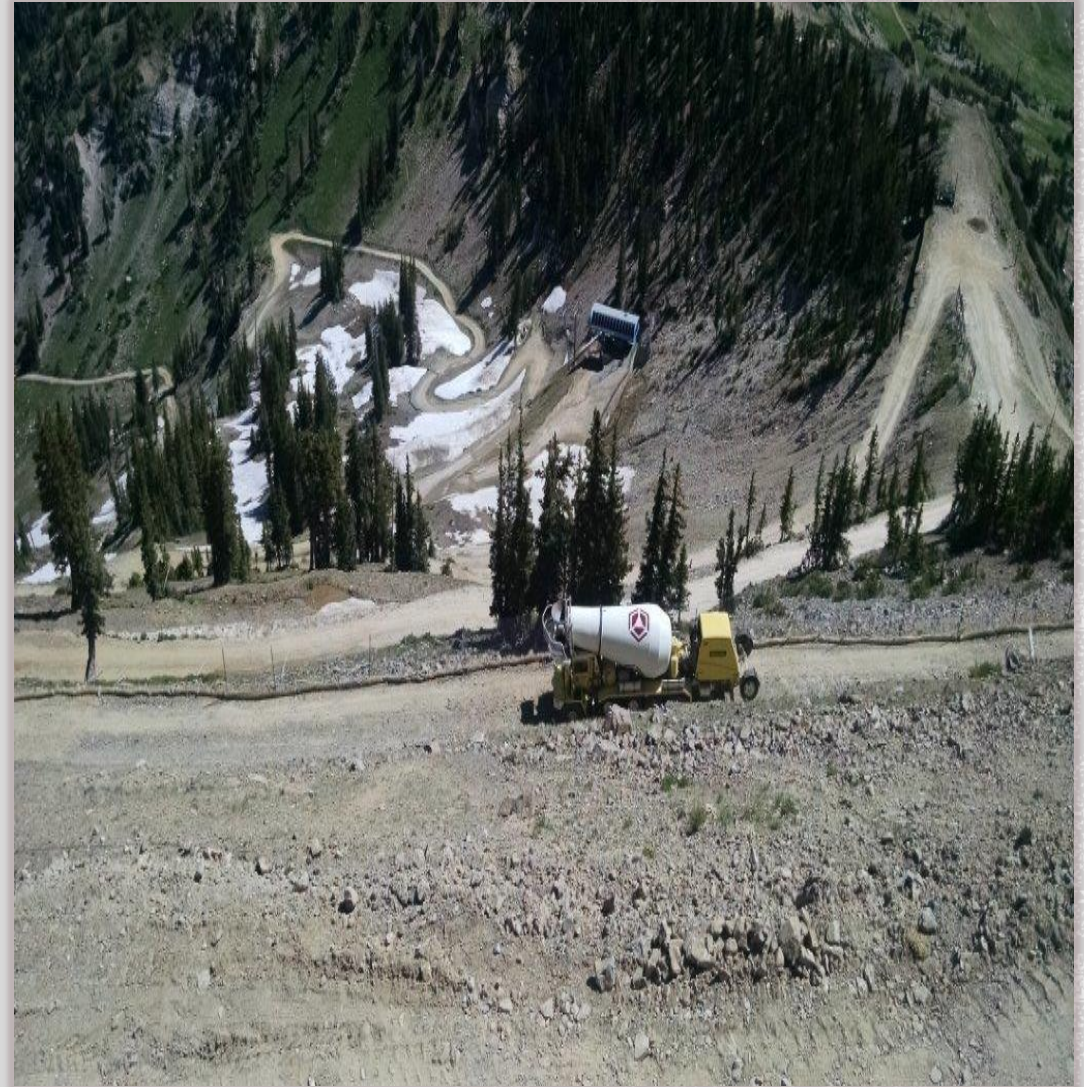






# SPECIAL DELIVERY

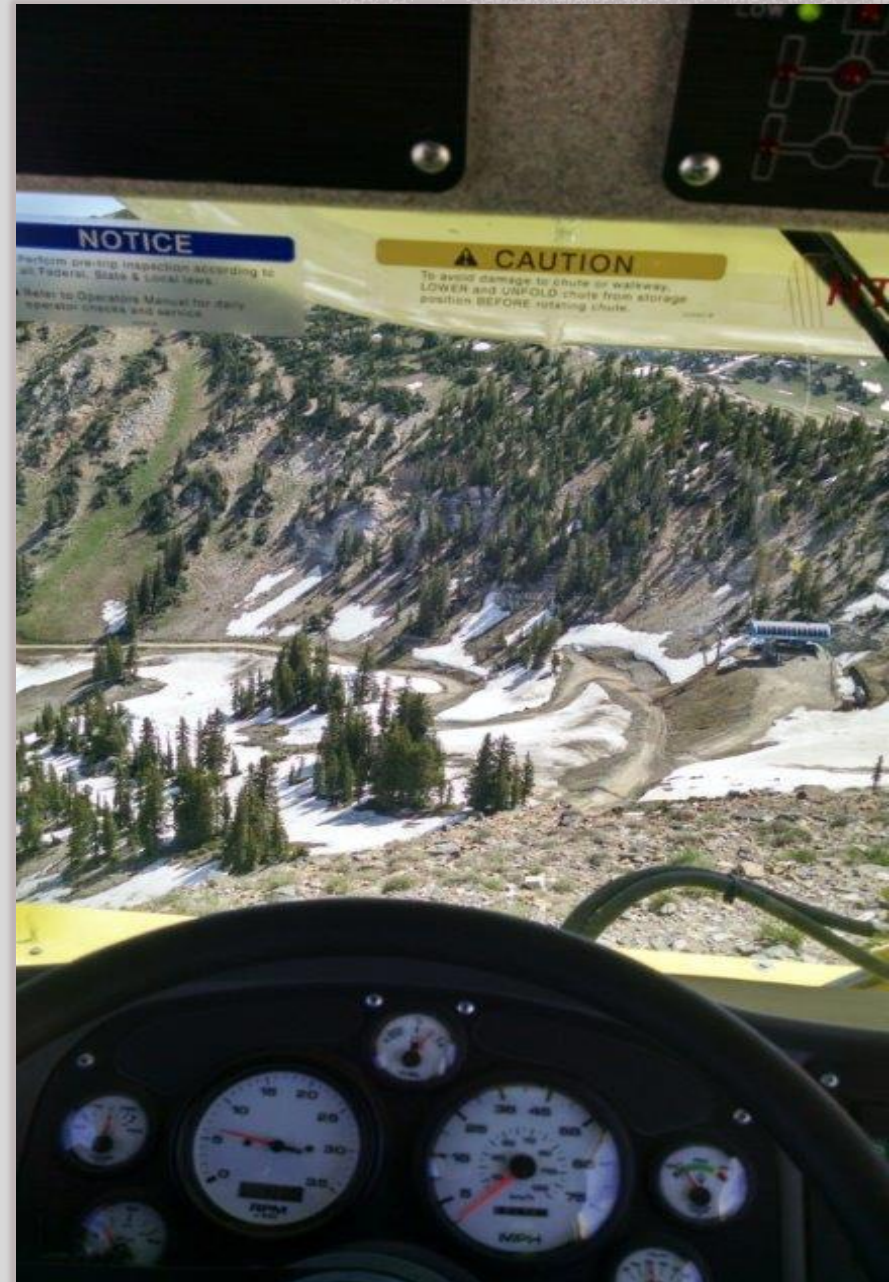
- Personnel on site
- Spotters on site
- Road hazards





# SWITCHBACKS

- Top 750 feet of elevation
- 38-feet long/70,000 lbs.



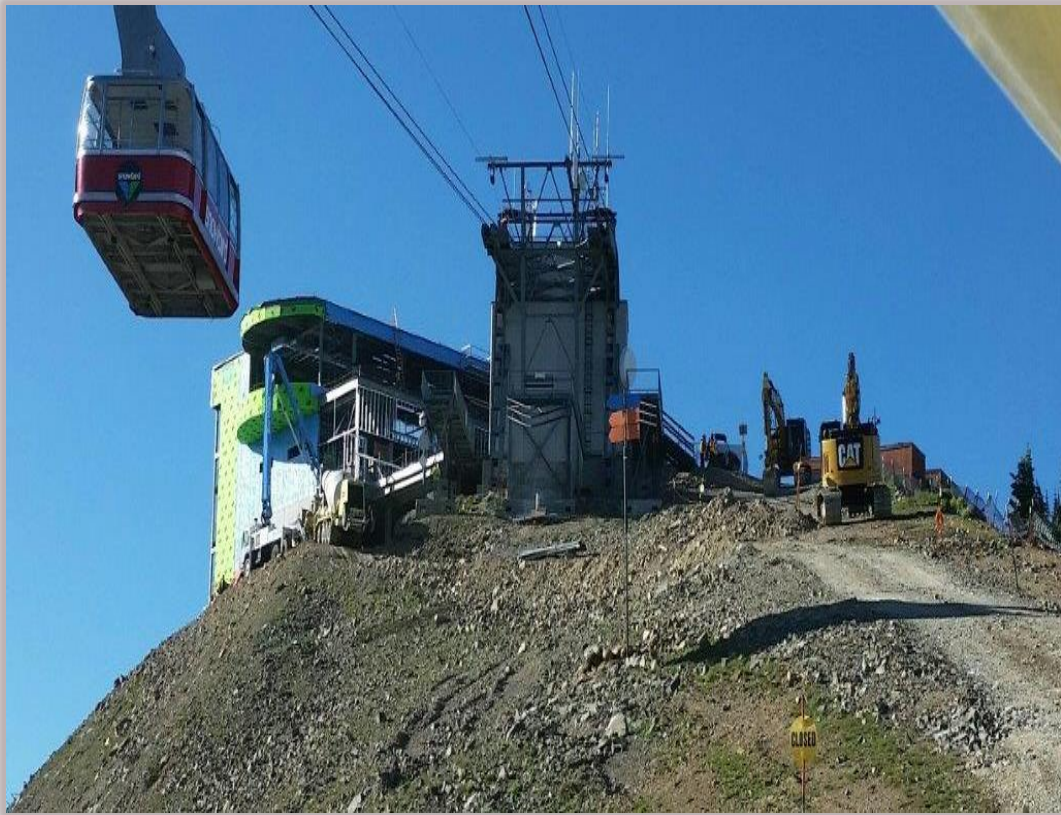


# SETTING/POURING THE WALLS

- Spacing of trucks
- Multiple vehicles on the road
- Critical timing for cold joints
- Timing on delay set
- Priority vehicles on the haul road
- Staging areas for delivery







## BATCHING/MIX DESIGNS

- In spec on site
- No concrete brought down the mountain
- Air/slump monitoring
- Admixture on site
- Travel time
- Load size





# BATCHING & MIX DESIGNS CONTINUED

- Mix design
- Shrinkage spec
- Control set
- NCC





# FLAT WORK CHALLENGES

- Weather
- Temperature swings  
20/70/20
- Delay/NCC
- High winds
- Lightning
- Delayed starts (sunrise)







## **FLAT WORK CHALLENGES CONT.**

- Consistency in set time through delay/load size/accelerators
- Never gambled, pours set & ready
- Always had additional form work setup for leftovers
- Planning pours around max load size



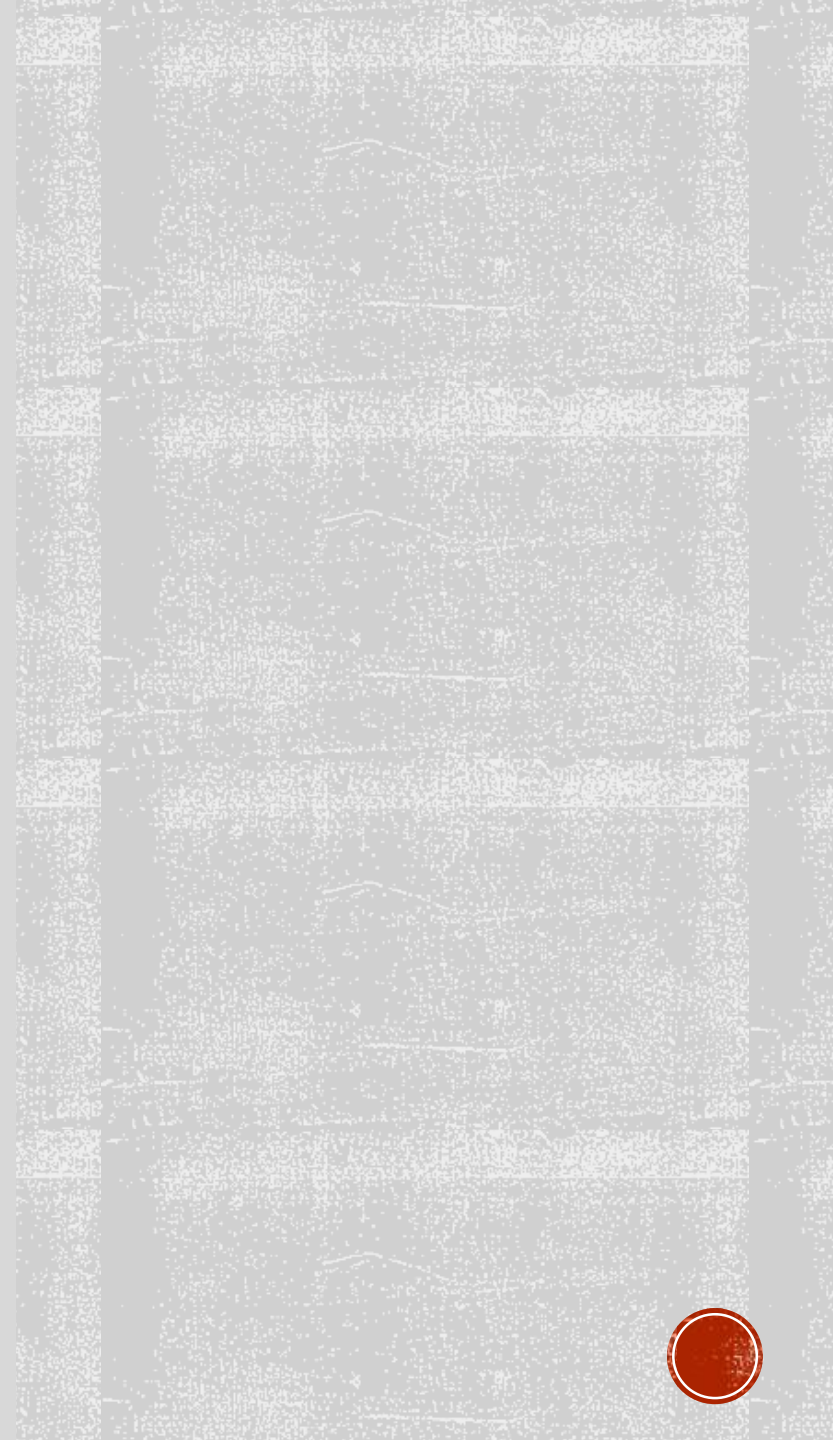




# END OF BUILDING SEASON 1



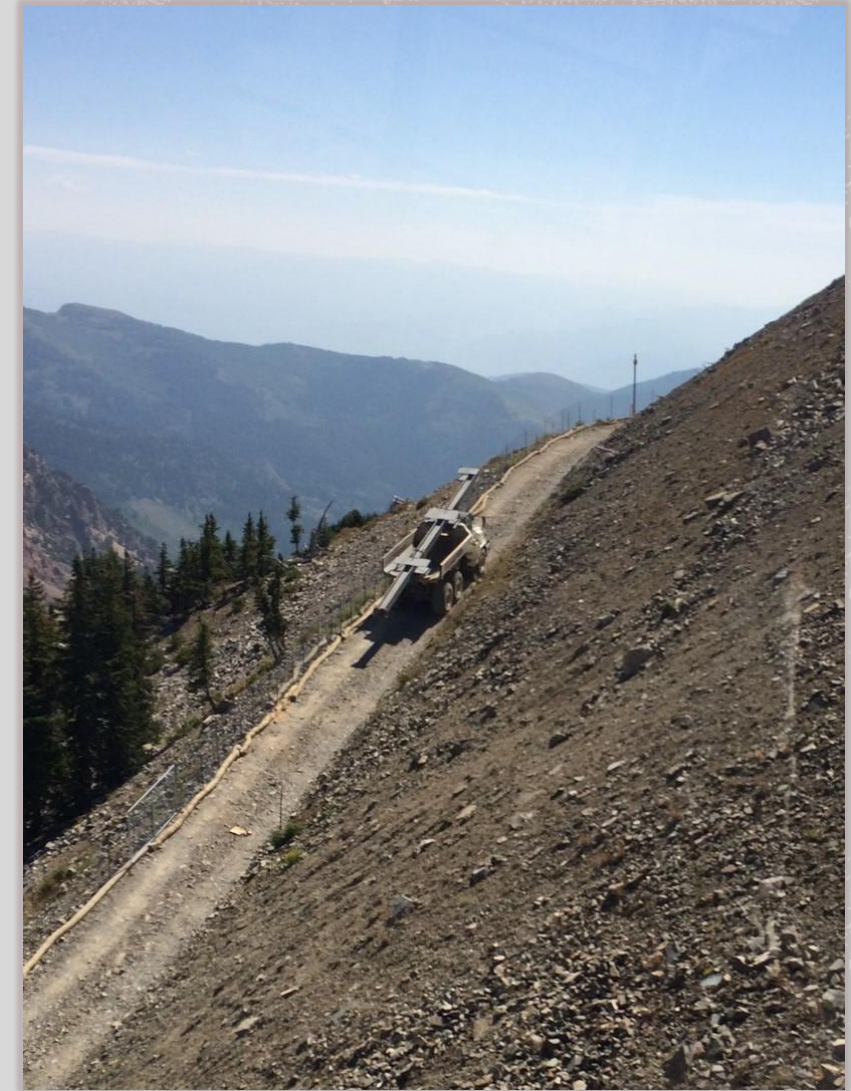






# DIFFICULTIES IN DELIVERY

- Coordination of trades
- Staging bottom/middle/top
- Sharp rocks/flat tires
- Mechanical failure, transfer load mid-mountain





# DIFFICULTIES IN DELIVERY CONTINUED

- Pedestrian traffic











# TOTALS

- 1,897 yards delivered
- 6.4 cubic yards average load size
- 289 loads
- 4 hours 43 minutes RTT average for the project completion







# CELEBRATION

- Two years accident/incident free
- Zero low break issues
- Minimal mechanical failures







# FINISHED PRODUCT

- Happy customer
- Happy skiers
- Beautiful building with the best views in the world







**March 2018**

