

Durability Properties of High Early Strength Concrete with Alternative Cement and Accelerated Portland Cement

By: Jeremy Smith*, Lamiya Noor, Dr. Jason Ideker, Dr. Burkan Isgor, Dr. Anuj Parashar, Dr. David Trejo, Dr. Jason Weiss,

*corresponding author: smithje9@orgonstate.edu



Oregon State
University

THE WORLD'S GATHERING PLACE FOR ADVANCING CONCRETE

aci CONCRETE
CONVENTION



Introduction

Objective of Study

Mixture Designs

Strength Development

Freeze-Thaw Durability

Electrical Properties

Challenges and Remaining Work

Introduction

- High Early Strength Concrete (HESC)
 - Rapid strength gain >3000 psi f'c in 3 hours
 - High paste contents
 - Good durability and performance
- Project Goals
 - Provide Oregon Department of Transportation with designs meeting the above criteria of HESC
 - Proprietary and non-proprietary materials
 - Calcium Sulfoaluminate Cement (CSA)
 - Polymer modified and pure CSA blended with ordinary portland cement (OPC)
 - Accelerated Type III Cement (T3A)
 - Non-chloride accelerator
 - Reduces closure time required for construction
 - Mechanical properties
 - Durability properties

Objective of Study

Focus of this presentation is:

- Mixture designs
- Strength development within 3-6 hours
 - With and without air entrainment
- Freeze-thaw durability
- Electrical properties
 - Bulk and Surface resistivity (Concrete w/o air entrainment)
 - Pore solution resistivity (Pastes)
- Challenges and remaining work

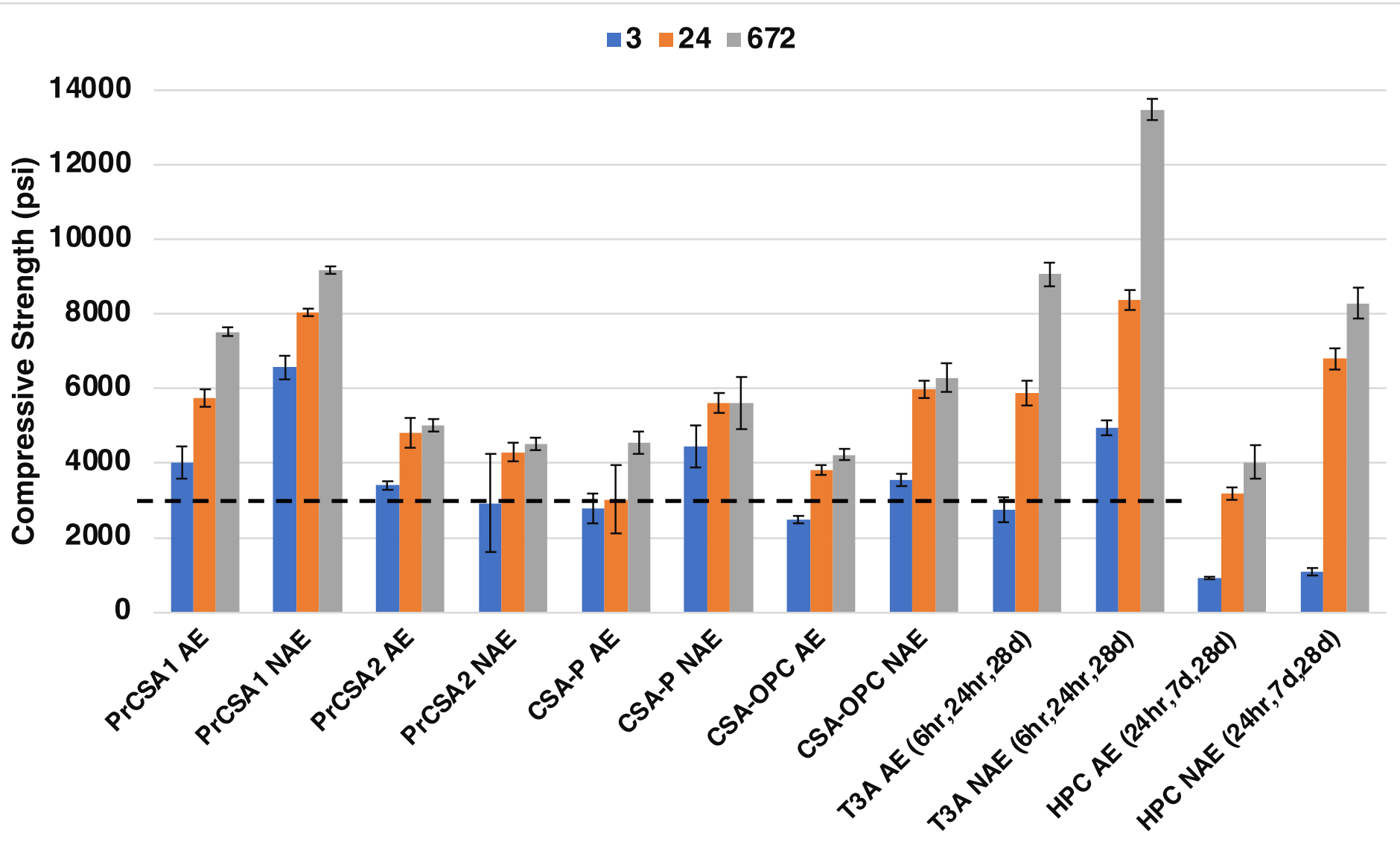
Mixture Designs

Cement	Description
PrCSA1	Proprietary CSA with polymer modifier and other dry batched admixtures at plant
PrCSA2	Proprietary CSA with dry batched admixtures at plant
CSA-P	Non-proprietary CSA with liquid polymer modifier added in laboratory
CSA-OPC	Non-proprietary CSA (80%) with OPC (20%)
T3A	Type III cement with 3% accelerator added by wt. of cement
HPC	High performance concrete design, 66% PC, 30% FA, 4% SF

- Concrete mix having cement 658 lb/yd³, rock 1601 lb/yd³, sand 1260 lb/yd³, w/c of 0.38 for CSA and 0.36 for OPC
- No additional air entrainment for resistivity concrete samples and 7% air targeted for freeze-thaw samples
 - Integral air entrainment in proprietary systems reduces ability to control air



Strength Development

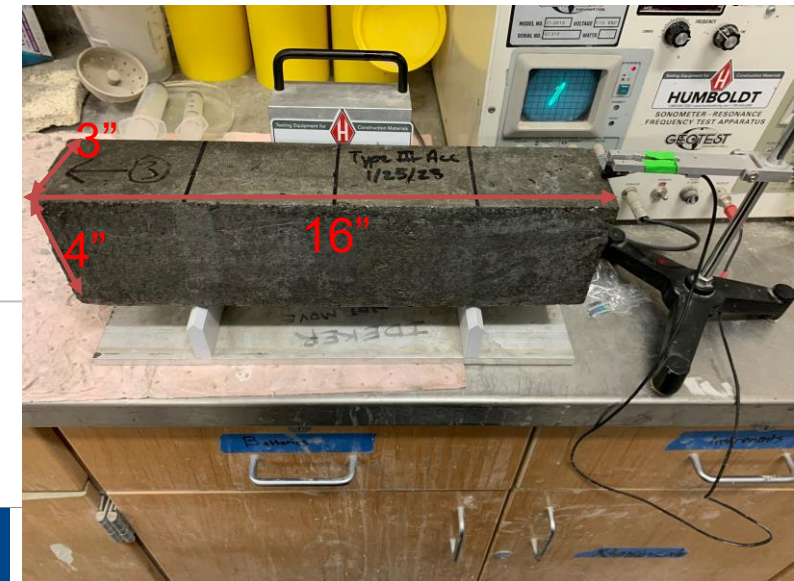
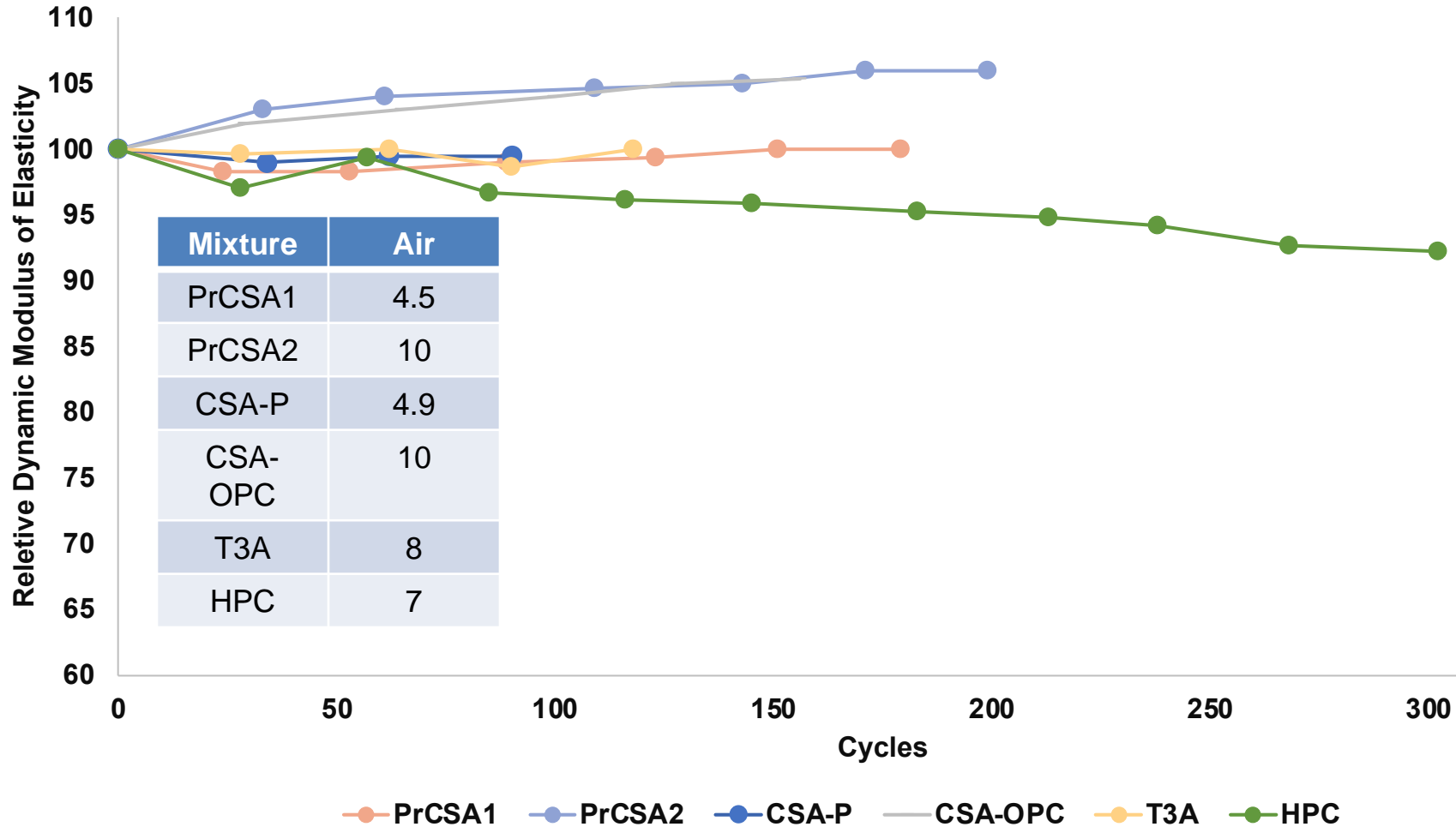


AE – Air entrained

NAE – Non-air entrained

Freeze-Thaw Durability

ASTM C666 Procedure B, DM > 90 is good performance, <60 DM is failure, 3"x4"x16" beams

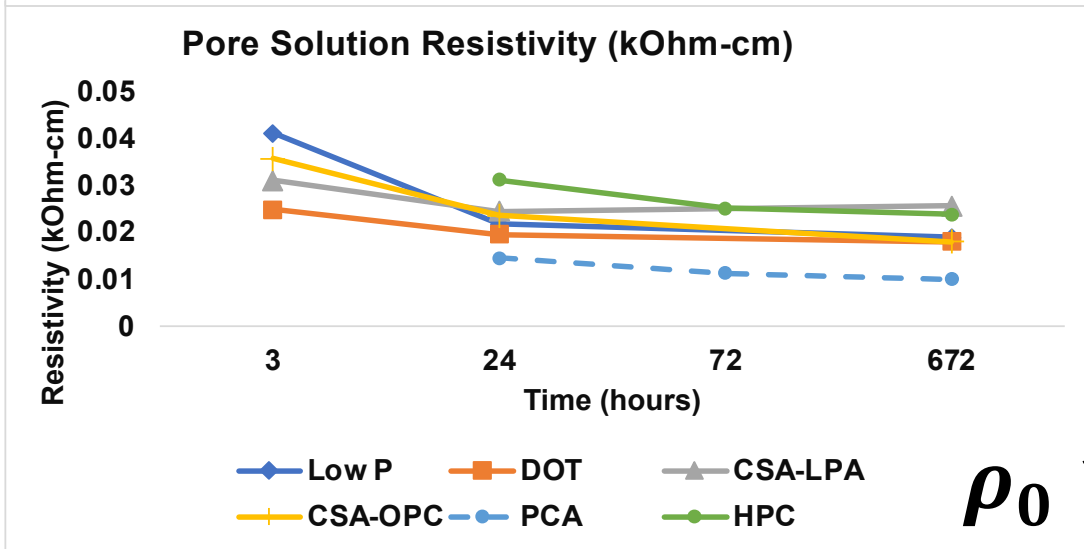
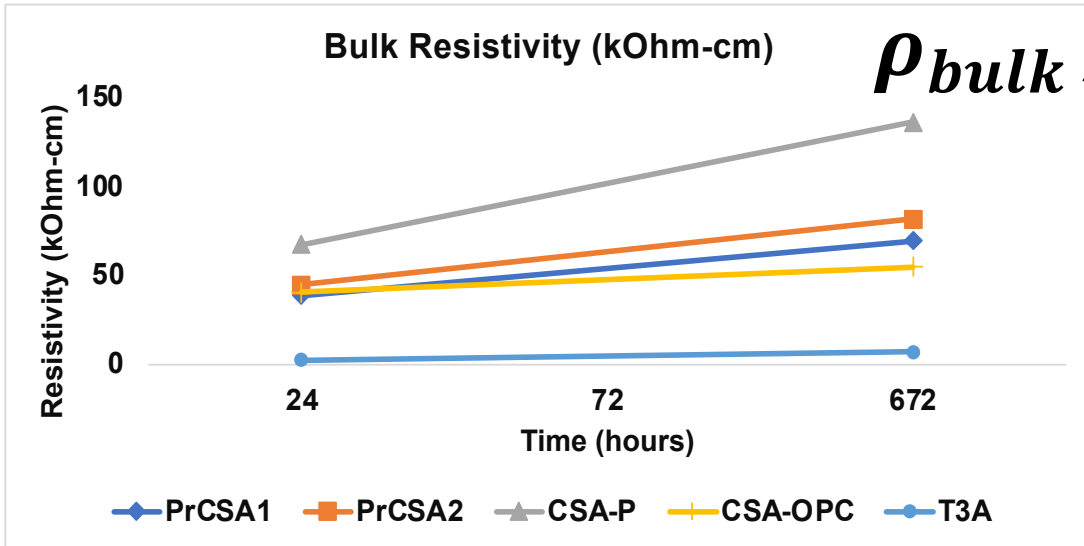


Electrical Properties

- Sealed cure
- Resistivity measured 3 ways:
 - Continuous resistivity of concrete/mortar using Giatec SmartBox sensor
 - Bulk resistivity of concrete at 28 days
 - Surface resistivity of concrete at 24 hours and 28 days
 - 24-hour measurement converted to bulk resistivity using geometric factor
- Degree of saturation at 28 days
- Pore solution of pastes done at 3 hours, 24 hours and 28 days
 - 1, 3, and 28 days for HPC and T3A
 - Solution extracted via hydraulic press set up [Siva T CCR paper]



Electrical Properties

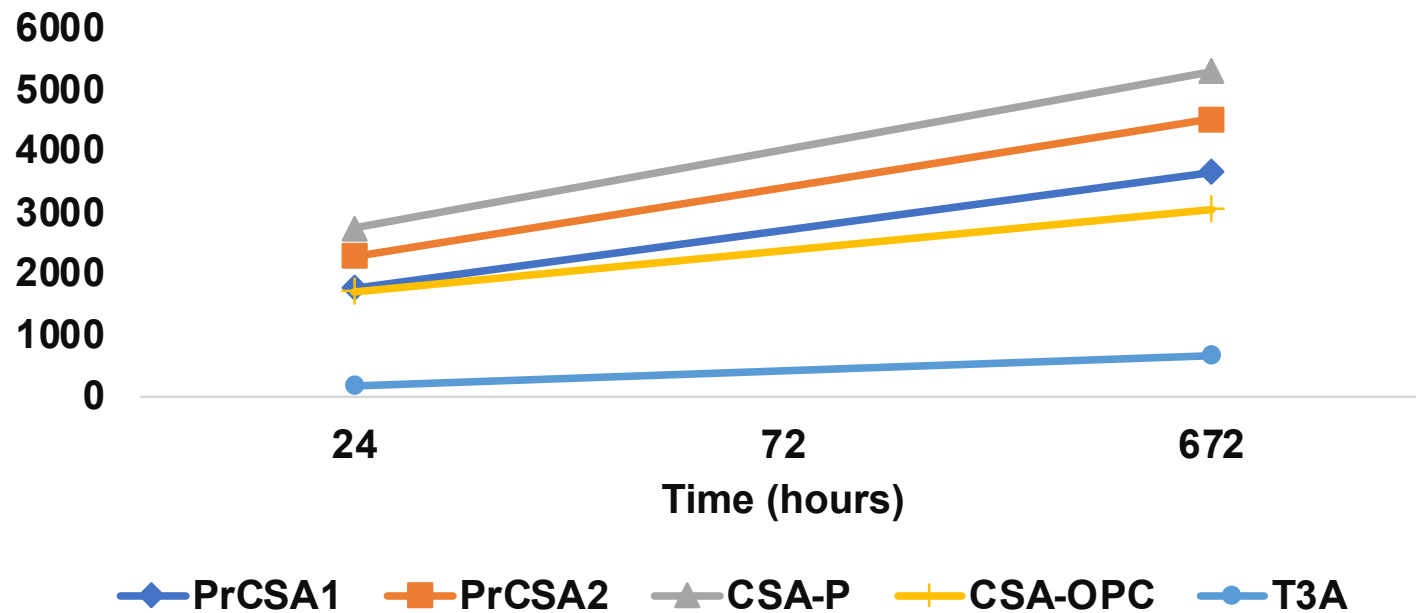


$$F_{apparent} = \frac{\rho_{bulk}}{\rho_0} = \text{Apparent Formation Factor}$$



Electrical Properties

Apparent Formation Factor



- PCA formation factor is typical of HPC from literature [Weiss, 2016]
- Very high values from alternative cements
 - Must correct for degree of saturation
- Are electrical property values representative of durability for these alternative systems?
 - Moffatt & Thomas, 2018

Electrical Properties

- PCA formation factor is typical of HPC from literature [Weiss, 2016]

Apparent Formation Factor

Table 4—Diffusion results after 180 days ponding and RCPT results at 91 days

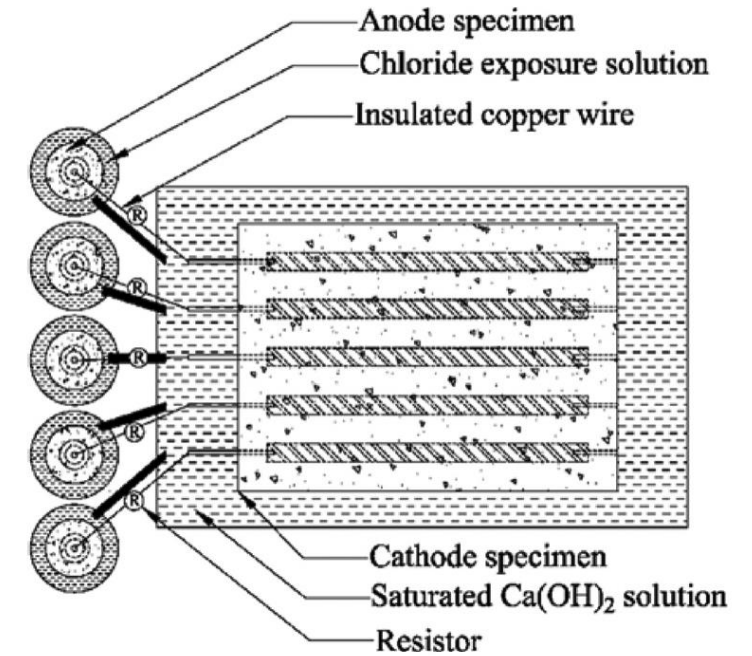
Cement type	Surface concentration C_s , %	Diffusion coefficient D_c , 10^{-12} m ² /s (in. ² /y)	RCPT, Coulombs
PC	0.84	6.94 (0.339)	3444
PC-CAC-CS	0.94	1.62 (0.079)	2710
CSA(1)-C ₂ S	1.14	28.7 (1.402)	1110
CSA(2)-PC	0.93	3.49 (0.170)	3374
HEPC	0.95	3.29 (0.161)	1710

◆ PrCSA1 ■ PrCSA2 ▲ CSA-P + CSA-OPC ● T3A

- Very high values from alternative cements

Challenges and Remaining Work

- Early setting time (<30 minutes) for CSA mixtures
- No established testing approach for durability of alternative cements
- Determine critical chloride thresholds (Cl_{crit}) influenced by different anodic and cathodic environments
 - Oregon State University Critical Chloride Threshold Test
 - Trejo, Vadey, & Halmen 2021
 - Half-cell potential vs. Cu-CuSO₄ electrode
 - Assess corrosion rate of embedded reinforcement
 - Determined by polarization resistance (R_p)



[Trejo, Vadey, & Halmen 2021]



ING PLACE

ONCRETE

Challenges and Remaining Work

- Conclude freeze-thaw cycling
- Continuous resistivity data with SmartBox Sensors
- Determine degree of saturation of concrete samples for electrical properties
- Pore solution pH with probe and ion concentration by x-ray fluorescence



Summary

- 3000-psi can be achieved within 3-hours
- T3A continues to gain substantial strength up to 28 days
- High freeze-thaw performance looks achievable even with less than 6% entrained air
- Alternative cements produce very high electrical resistivities that influence formation factor
 - Needs to establish relationship of electrical properties to durability of CSAs

Thank you

*corresponding author: smithje9@orgonstate.edu



Oregon State
University

THE WORLD'S GATHERING PLACE FOR ADVANCING CONCRETE

aci CONCRETE
CONVENTION

