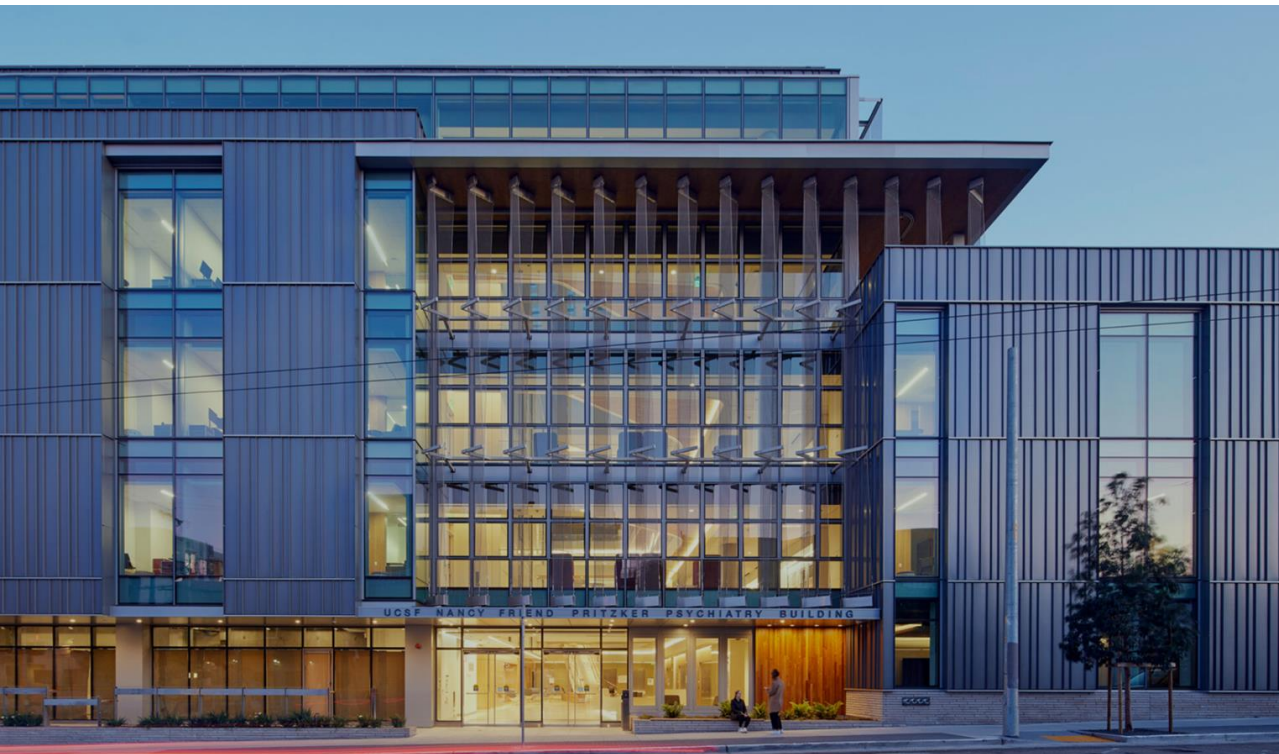


THE WORLD'S GATHERING PLACE FOR ADVANCING CONCRETE



UCSF Nancy Friend Pritzker Psychiatry Building



**University clinical care
and research facility**

**Highly tailored to site
and building program**

**Focus on seismic
resilience**

**Public-private
partnership**



Unlikely candidate for ACI award

Original designed as steel

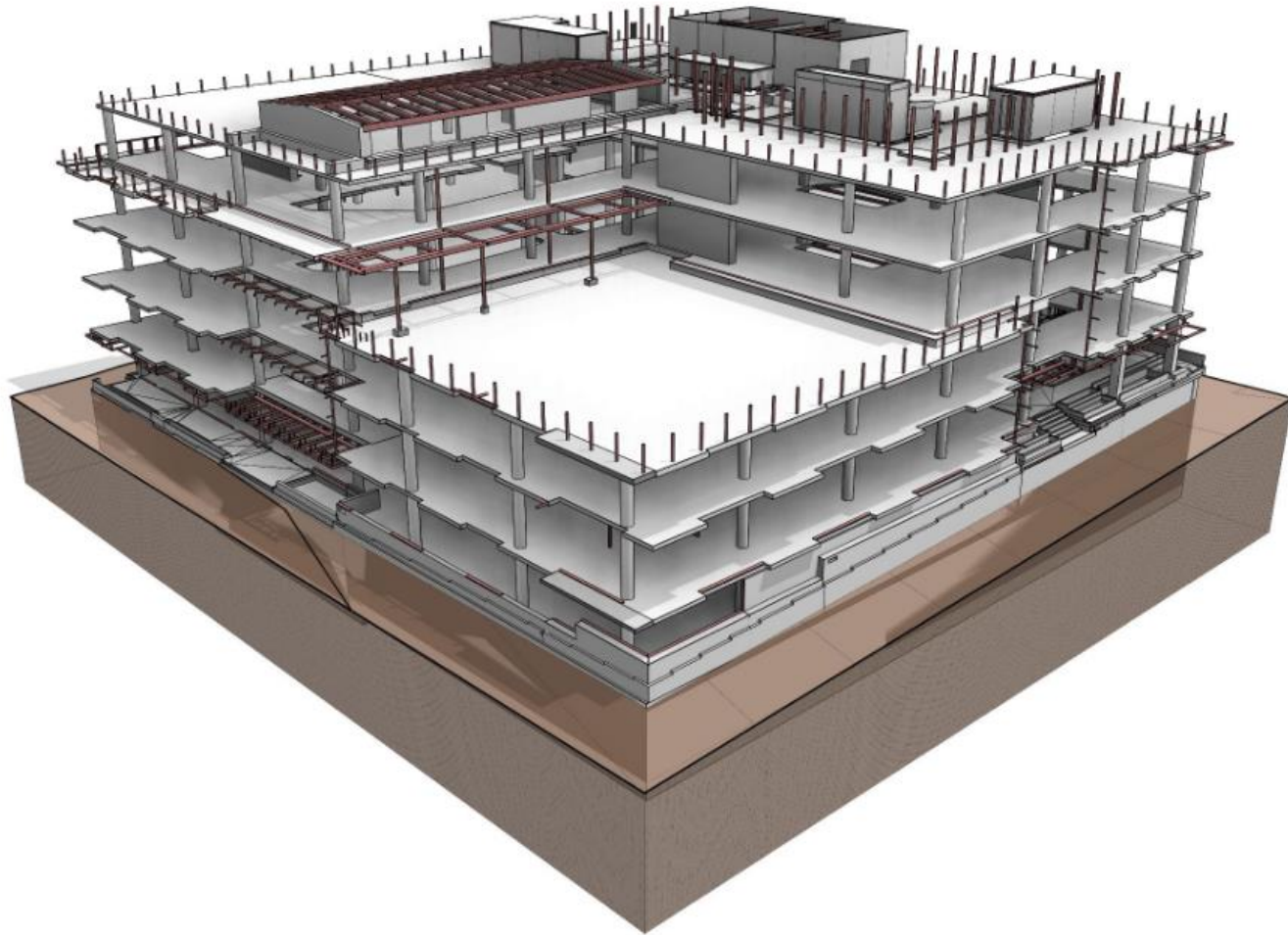
Concrete advantages

Building height

Floor assembly

Seismic

Architecture



PT flat slab

Shear walls

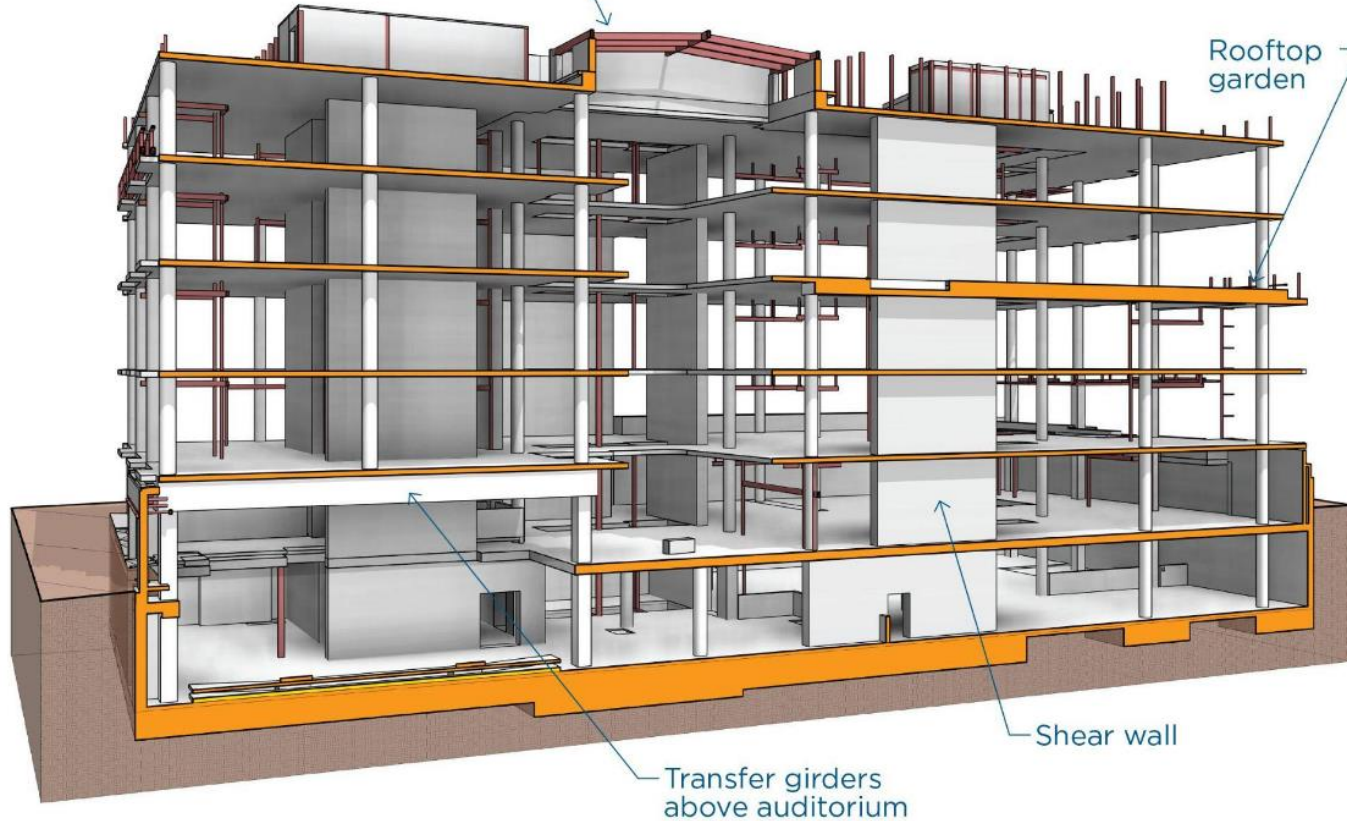
Additional floor

Low carbon concrete

▼ **Complex Program** Careful placement of shear walls and transfer girders accommodate the mix of programmatic spaces

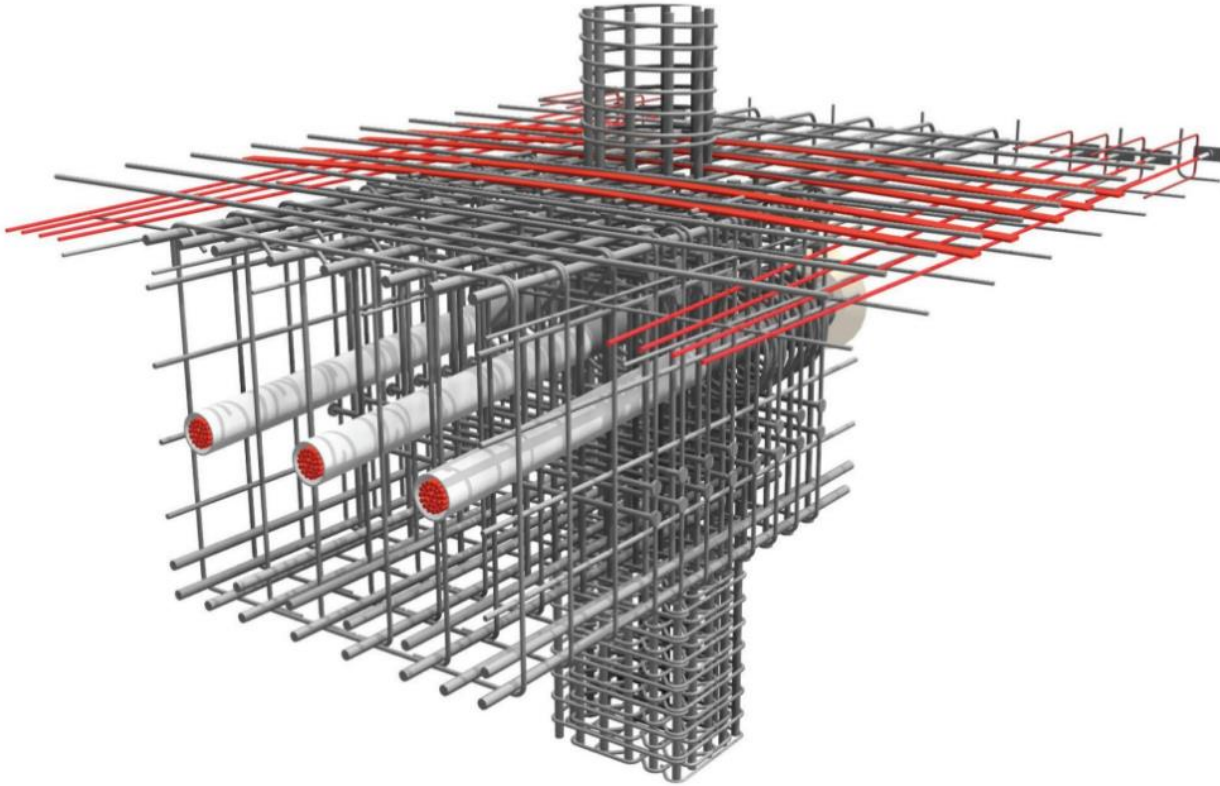
Five-story central atrium with massive skylight

Rooftop garden

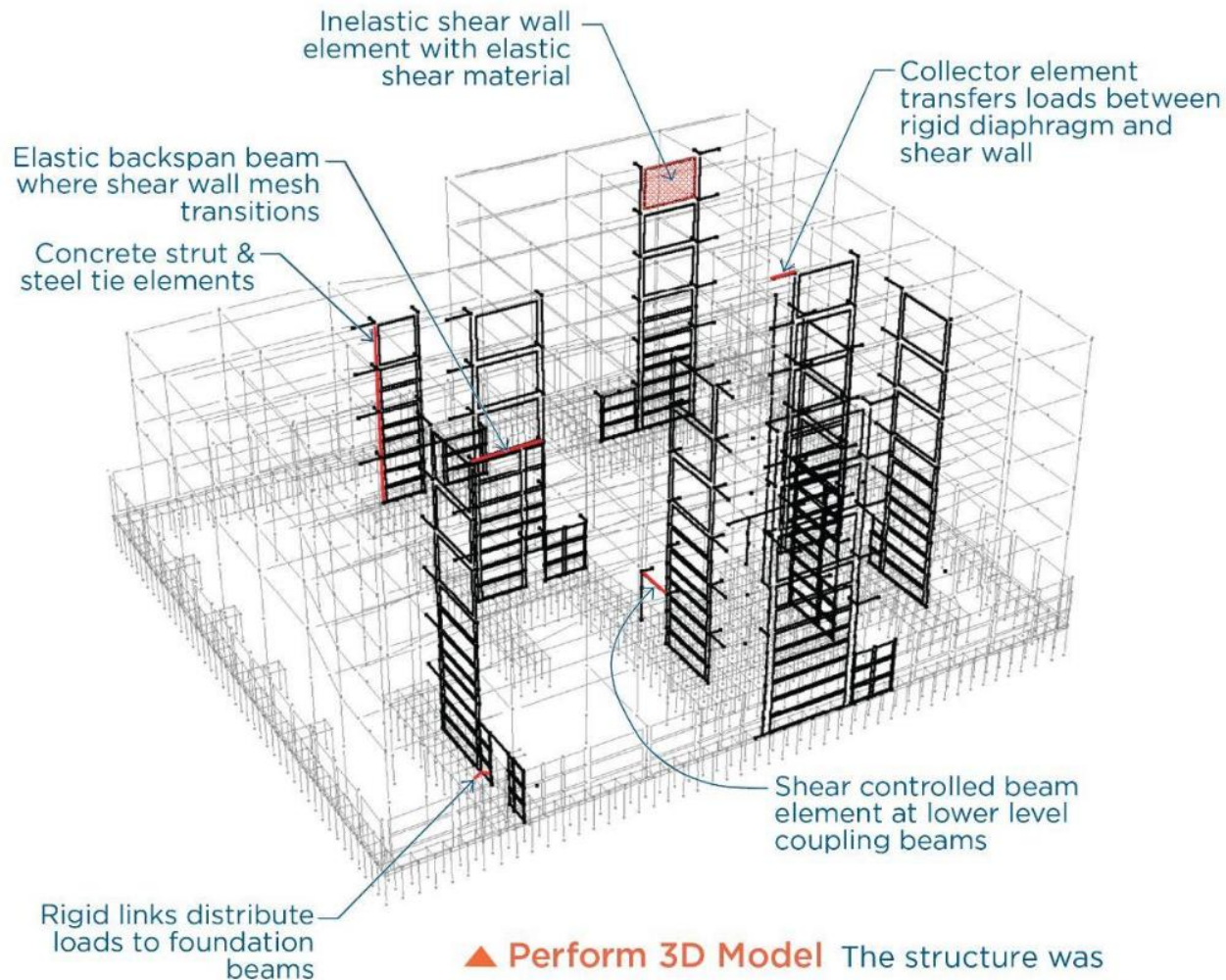


Transfer girders above auditorium

Shear wall



▲ **Transfer Girders** A column-free auditorium at the ground floor is created with a pair of concrete transfer girders at the second floor, each roughly 60-inches wide by 54-inches deep and spanning 57 feet over the auditorium

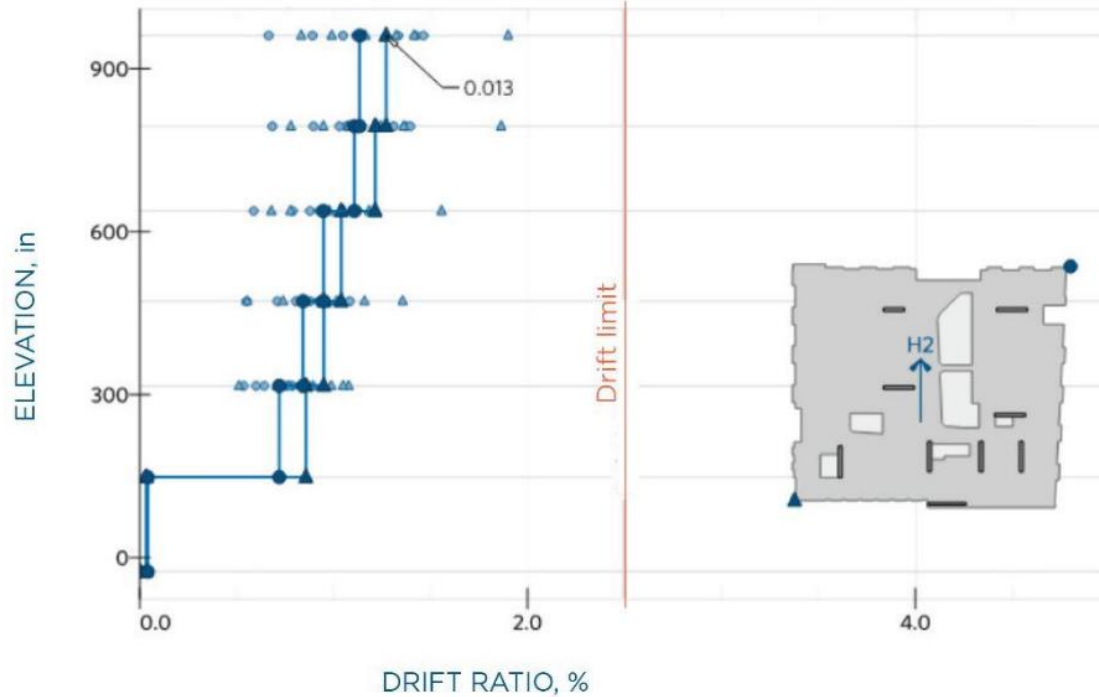


Detailed nonlinear model

Shaking simulations

▲ Perform 3D Model The structure was modeled to fine tune a high performing design

DBE - Story Drift



Performance-based design

Protect structure, cladding, components

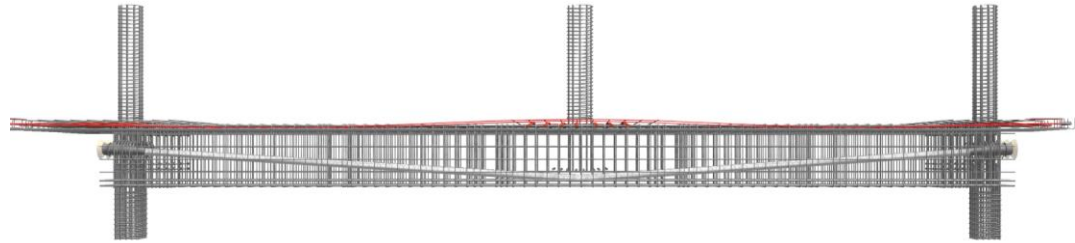
▲ **Seismic Performance** The concrete structural system was designed to limit seismic movement, with drifts at about half of the code limit, providing resilience, added protection of the building, and post-earthquake functionality



Constructability

Sequencing

Logistics





Innovative Design

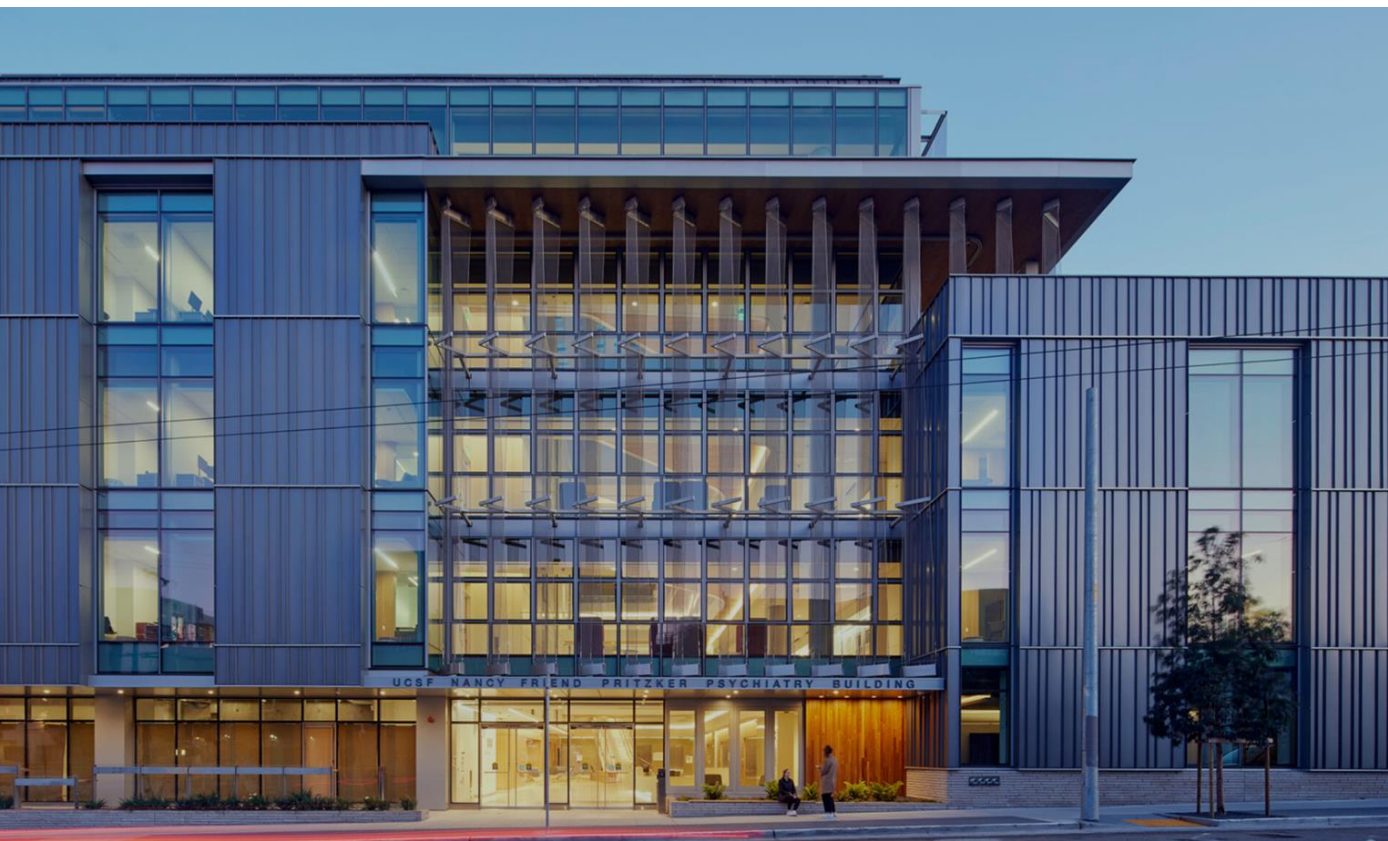
Structure tailored to serve ambitions design, complex program, and site constraints. Seismic system optimized through performance-based design.

Seismic Resilience

Seismic system designed to limit movement and enhance post-earthquake functionality.

Sustainable Integration

Low-carbon concrete mixes were employed throughout to significantly reduce the carbon footprint of the structure.



OWNER

University of California,
San Francisco

DEVELOPER

SKS Investments and
Prado Group

ARCHITECT

Perkins & Will | ZGF

STRUCTURAL ENGINEER

Tipping

CONTRACTOR

Hathaway-Dinwiddie

THE WORLD'S GATHERING PLACE FOR ADVANCING CONCRETE

