



San Francisco, CA
April 4, 2023

NATIONAL
VETERANS
MEMORIAL
AND MUSEUM





NVMM Timeline

- December 2015 Building construction began
- Summer 2016 Memorial Grove earthwork began
- Spring 2017 Interior construction begins
- Winter 2017-2018 Building complete; exhibit installation begins
- October 27, 2018 Grand Opening



Veterans Advisory Committee

- NVMM began with an idea from the late Senator John Glenn (1921-2016), Colonel, USMC (retired)
- No greater calling than to inspire young people
- Committee of Veterans put together to give feedback & recommendations to the Design Team
- Goal was a world-class, state-of-the-art representation of the contributions and sacrifices made by military veterans and their families



Mission-Four Foundational Pillars

- Honor Americans' contributions to our Country through Military Service
- Connect Civilians with Veterans and their experience
- Inspire Visitors to serve their community and nation as acting engaged citizens
- Educate Schoolchildren about the history and value of service

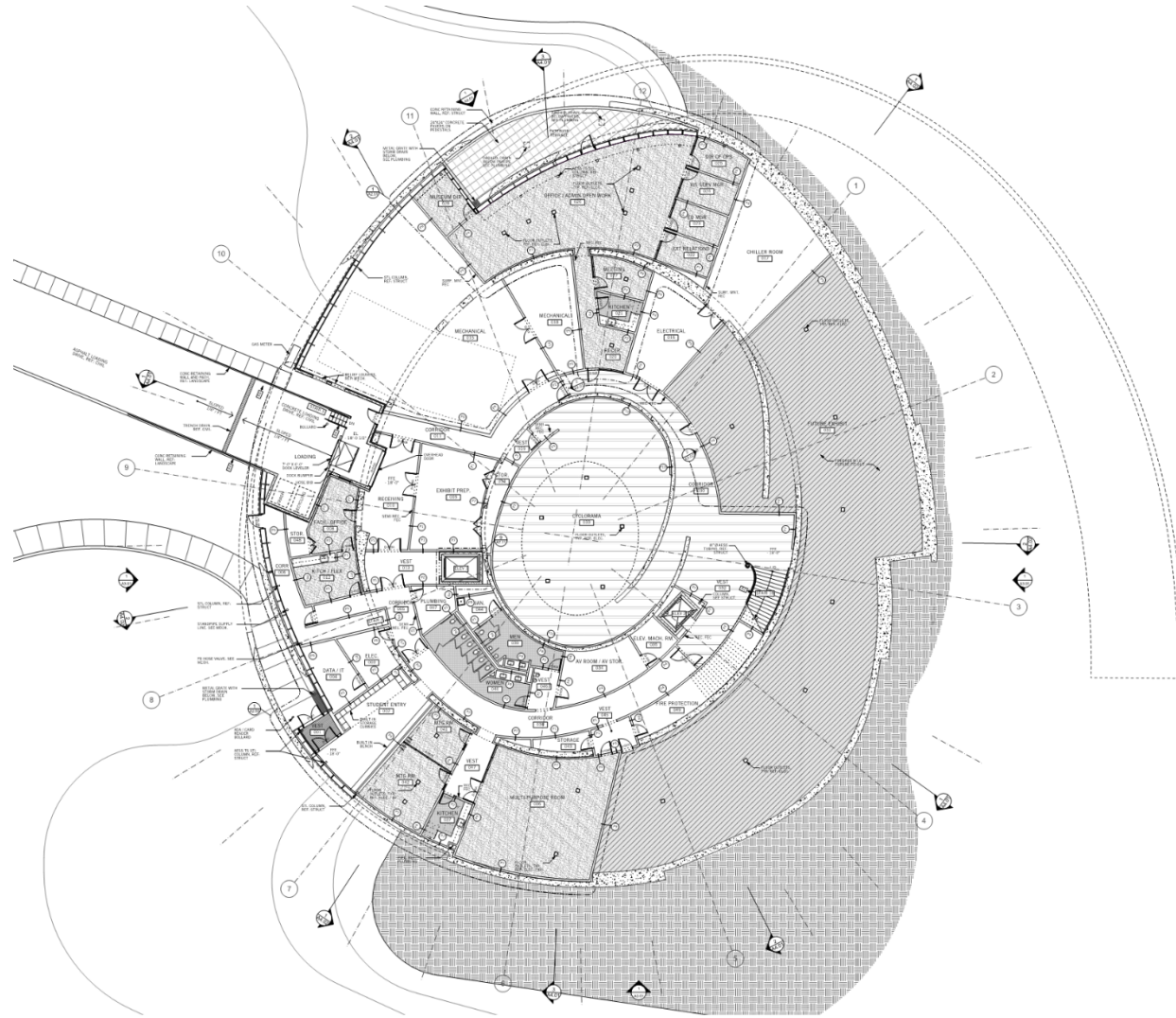
INTRODUCTION



OWNER: COLUMBUS DOWNTOWN DEVELOPMENT CORPORATION
ARCHITECT: ALLIED WORKS ARCHITECTURE
ENGINEER: KNIPPERS HELBIG ADVANCED ENGINEERING

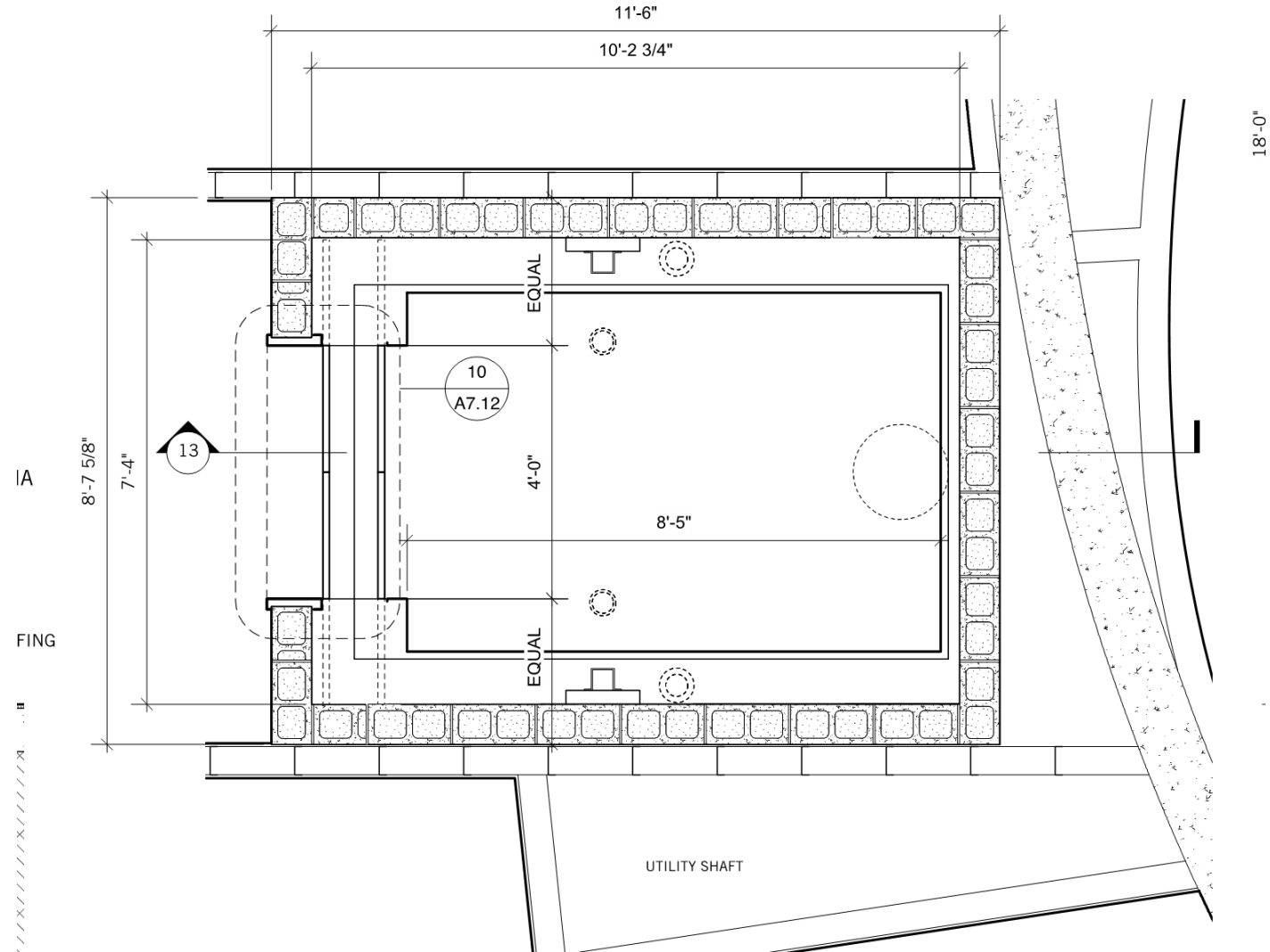


PRECONSTRUCTION



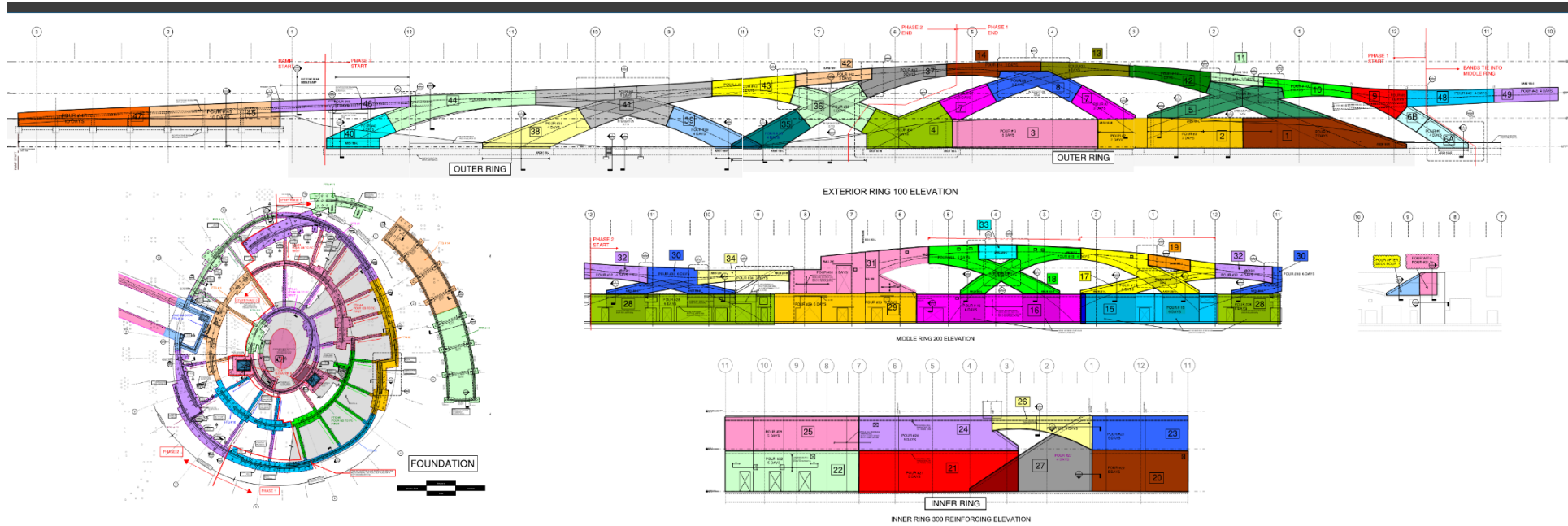


PRECONSTRUCTION



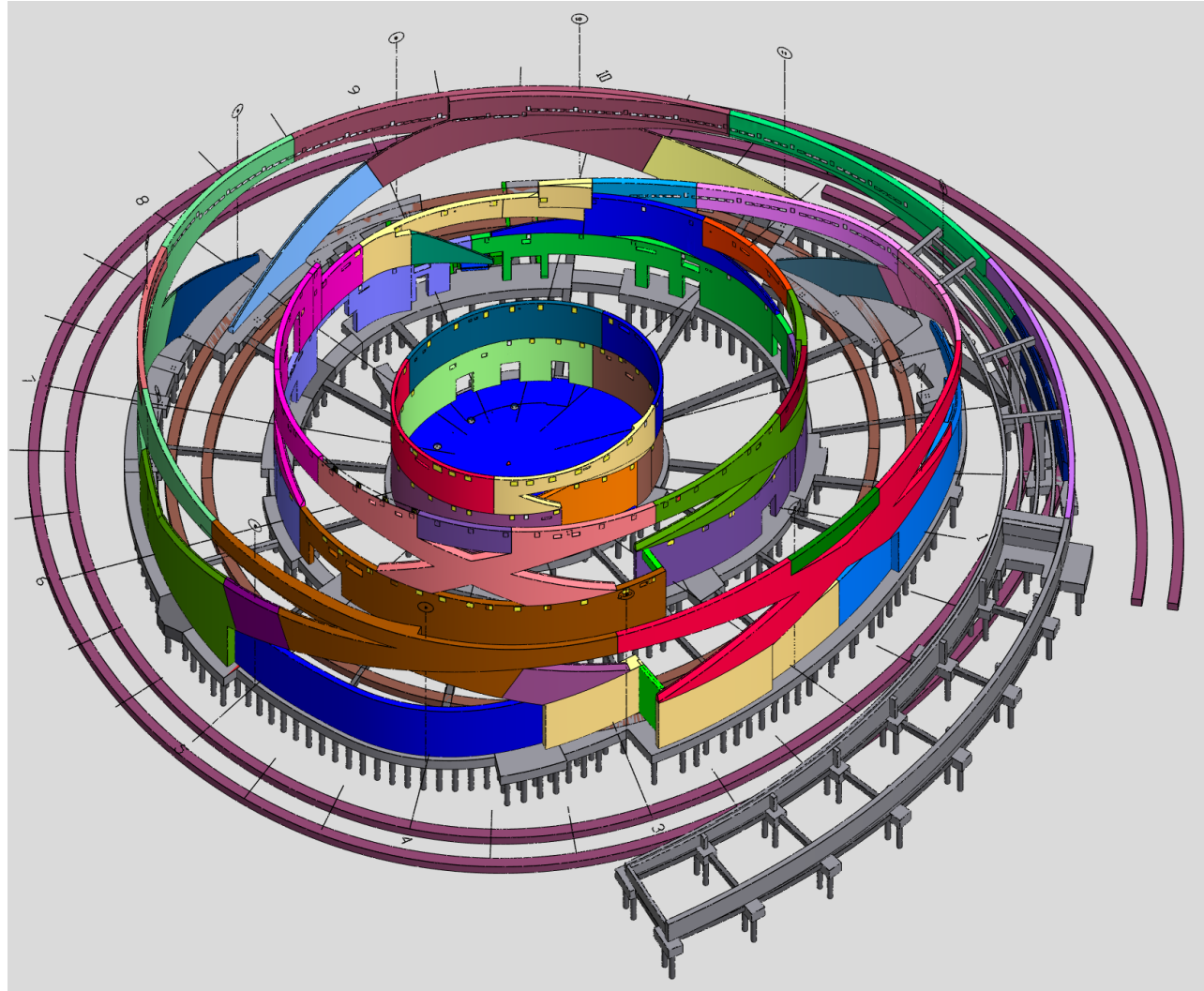


PRECONSTRUCTION





PRECONSTRUCTION



MOCKUP





MOCKUP



① Better Rebar template

- Vert
- Angle
- mark top mat
- Watch for \perp Steel
- Watch placement of 4x4
- mark rebar on grade
- Put one face knife steel on battens/plying
- Check critical bond steel when delivered
- Band at end of bulkhead steel prior to construction JT

Concrete

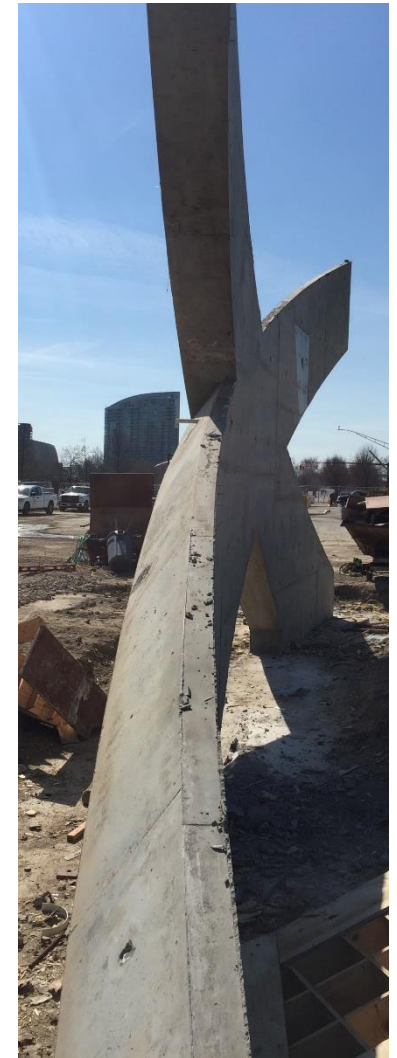
- hold down $\frac{1}{2}$ " wooden wall
- Sump spots for formwork

Formwork

- Poplar on pour 2 of mockup
- us thinner final sheet to make cutouts
- Drawings stamped before final job
- All boxouts
 - All loose
 - break bars on 2+ boxouts
 - Drill our own tie holes
 - tie tolerance from post tie? need 6"
 - 1st 4" tie least need guidelines added tie
 - See place tie panels
 - max tie spacing
- put panel marks on face instead of side GT24
- Mike rippers shallow on side
- Sheet back into side

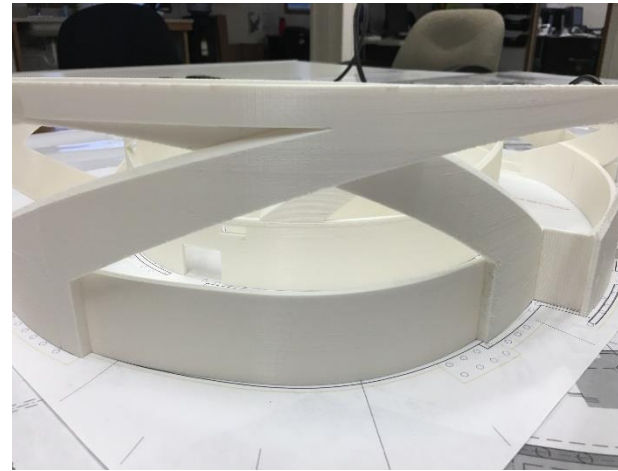
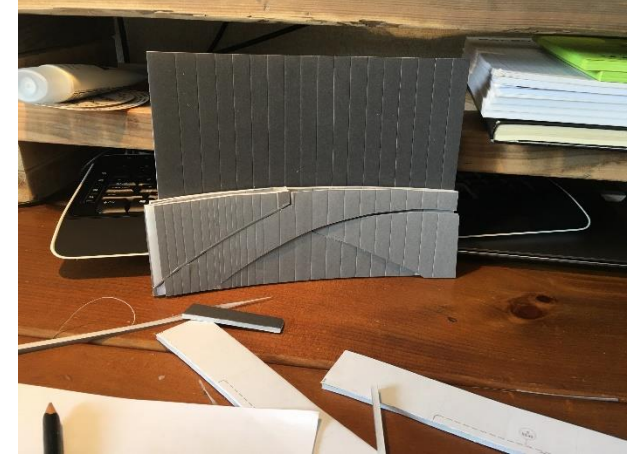
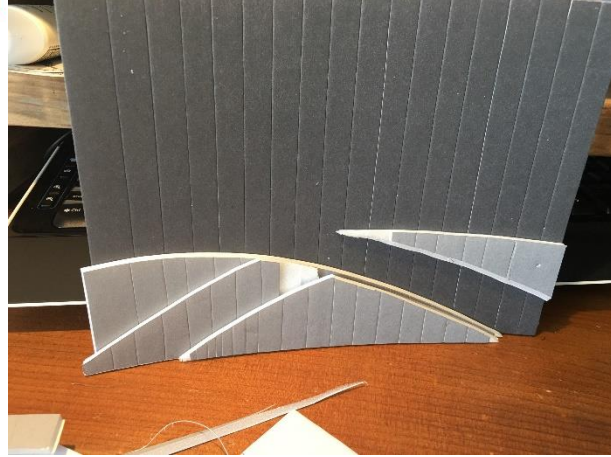


MOCKUP



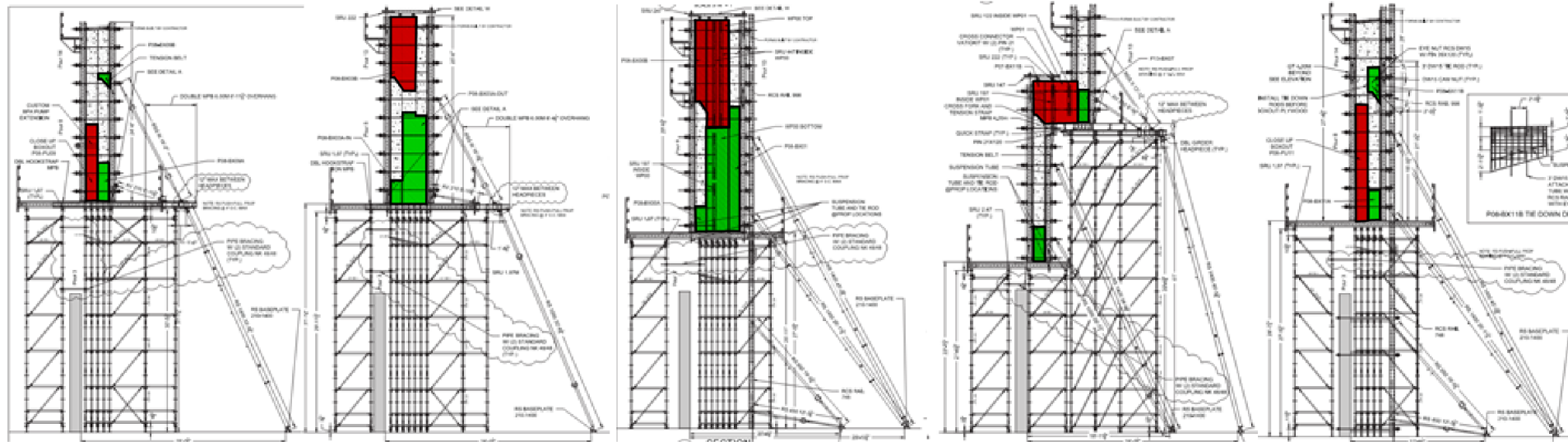


GEOMETRY

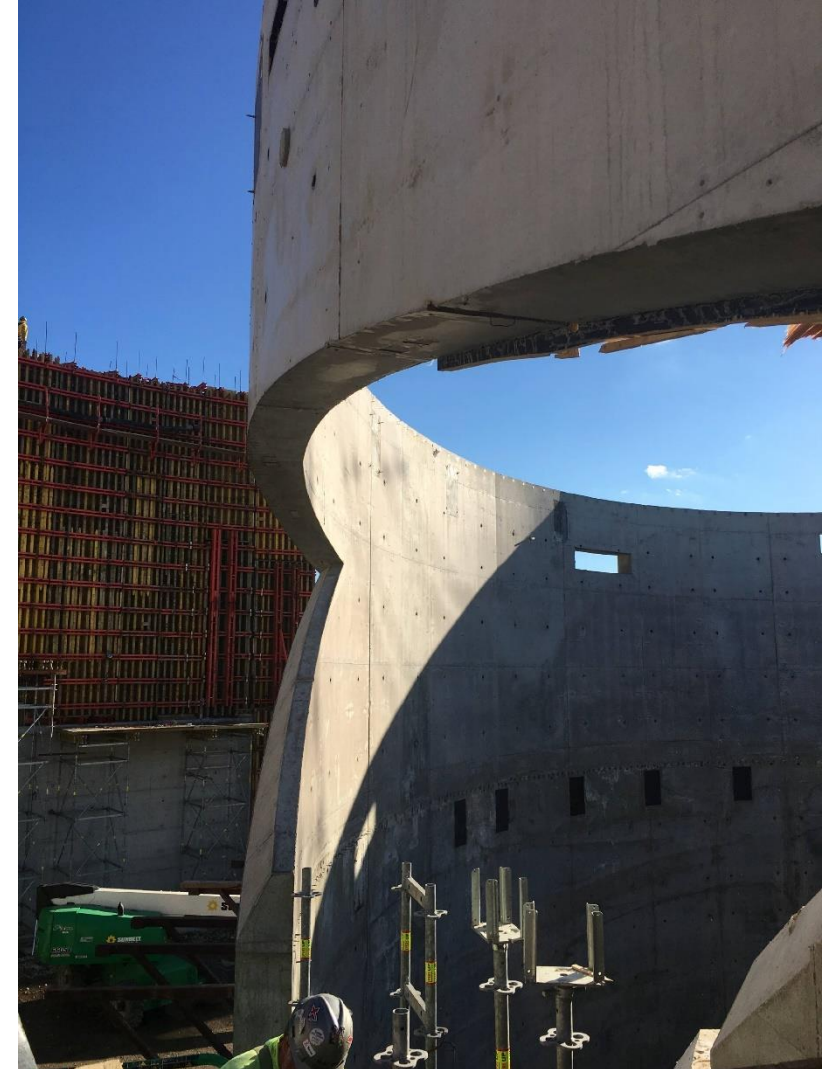
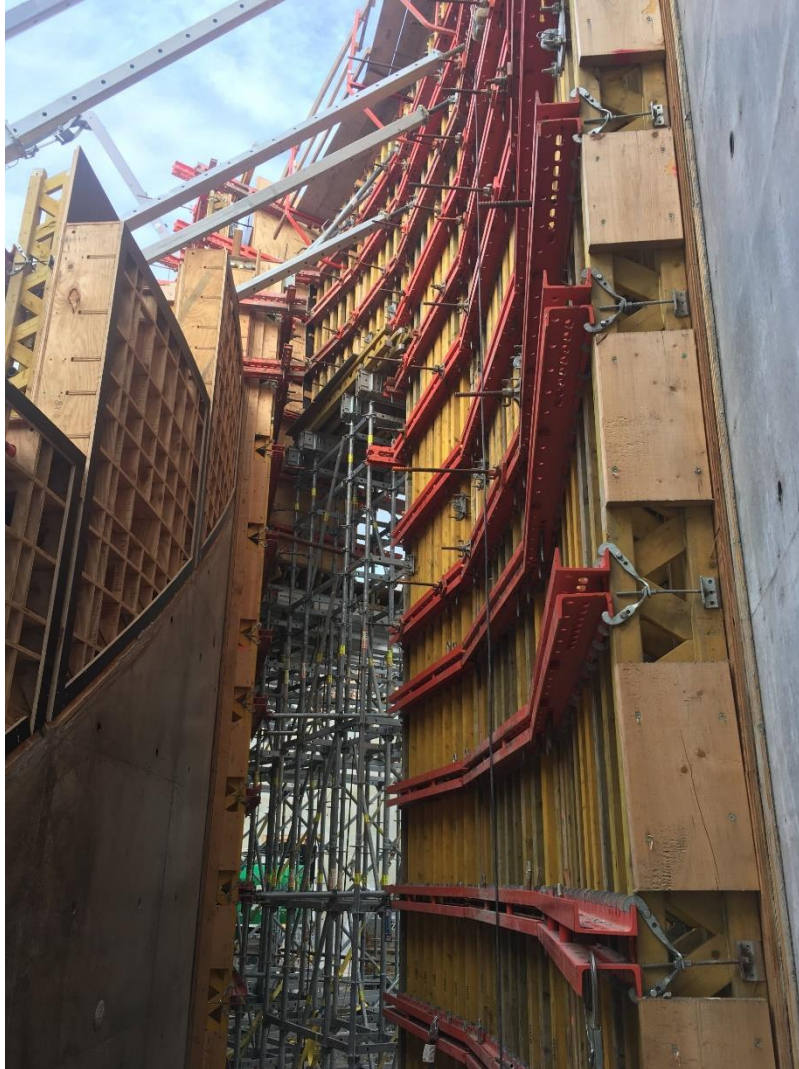




GEOMETRY



GEOMETRY





GEOMETRY



GEOMETRY



GEOMETRY



REBAR PLACEMENTS



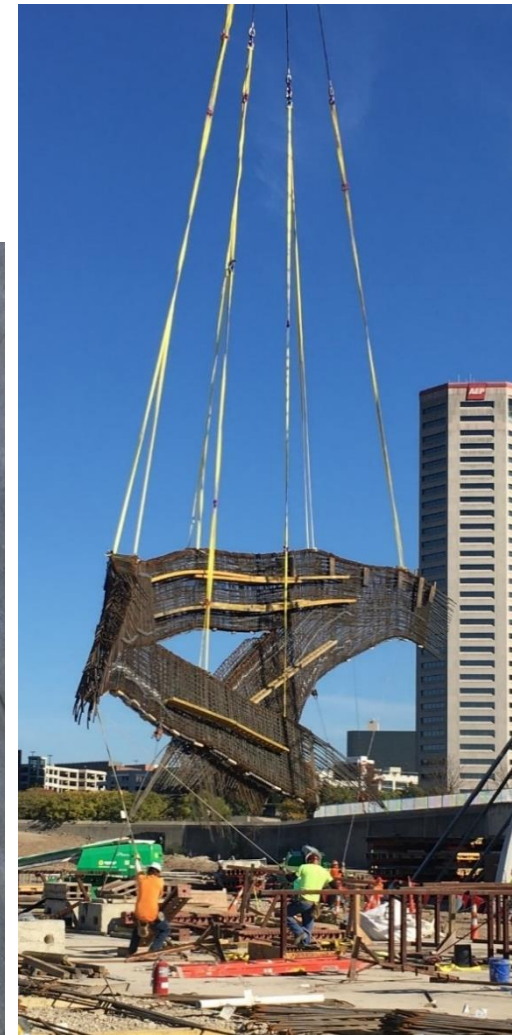


REBAR PLACEMENTS





REBAR PLACEMENTS



CONCRETE PLACEMENTS





CONCRETE PLACEMENTS

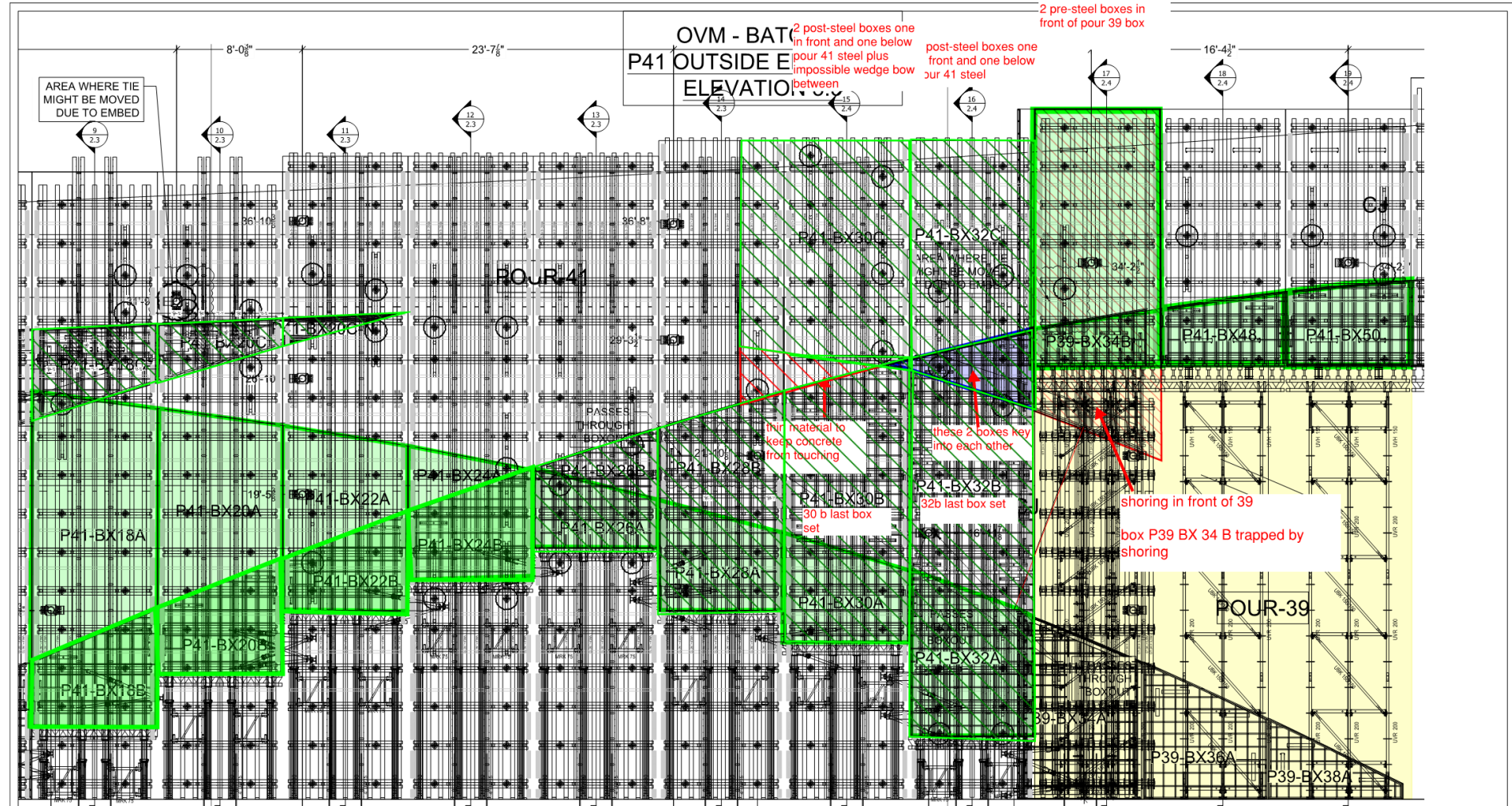


CONCRETE PLACEMENTS



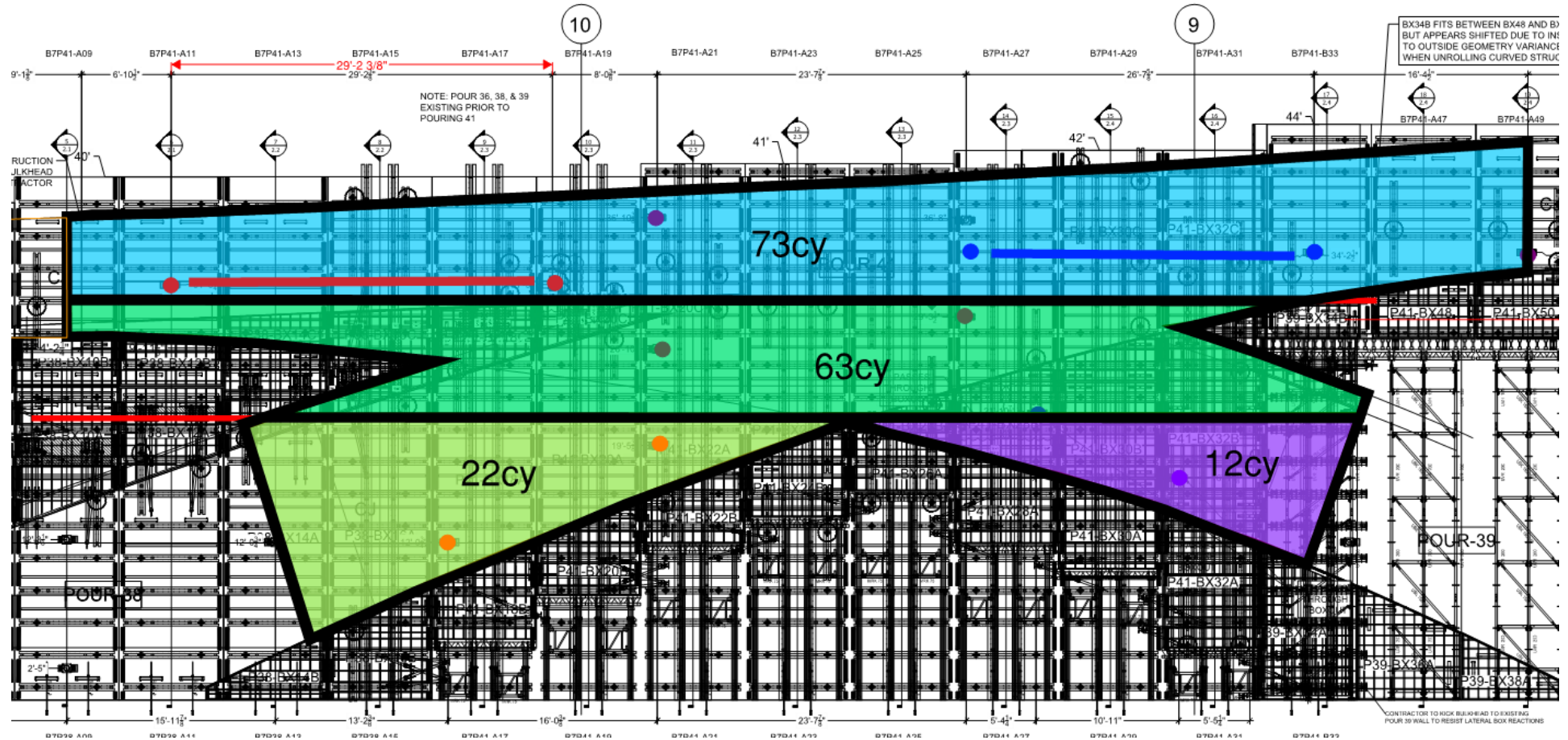


CONCRETE PLACEMENTS





CONCRETE PLACEMENTS



CONCRETE PLACEMENTS



THE BUILDING





THE BUILDING



FINAL





FINAL





FINAL



Lobby

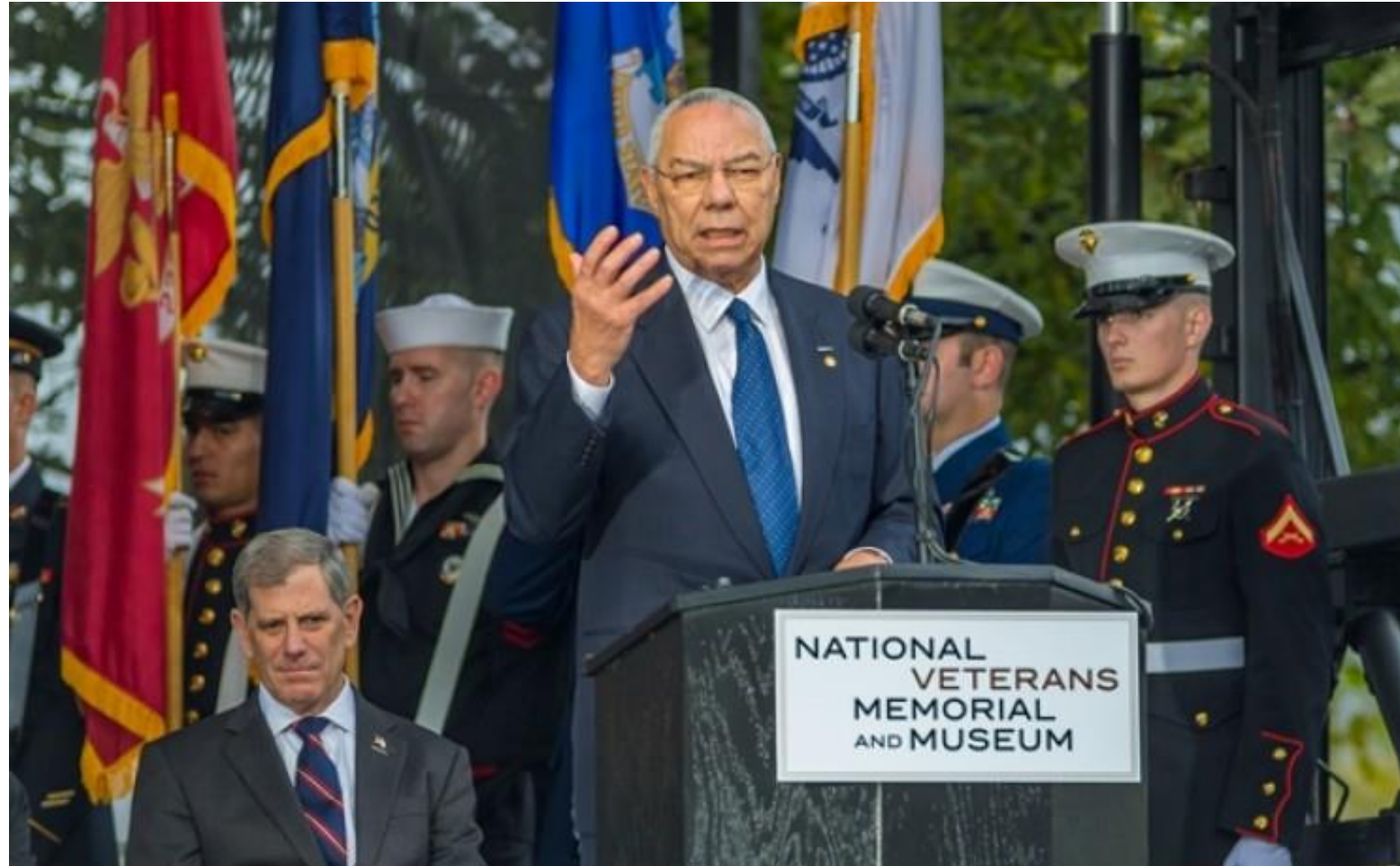




Stories of Service



Grand Opening





THE WORLD'S GATHERING PLACE FOR ADVANCING CONCRETE