

# Block G- 1- Tampa: "The Decorative Precast Building"

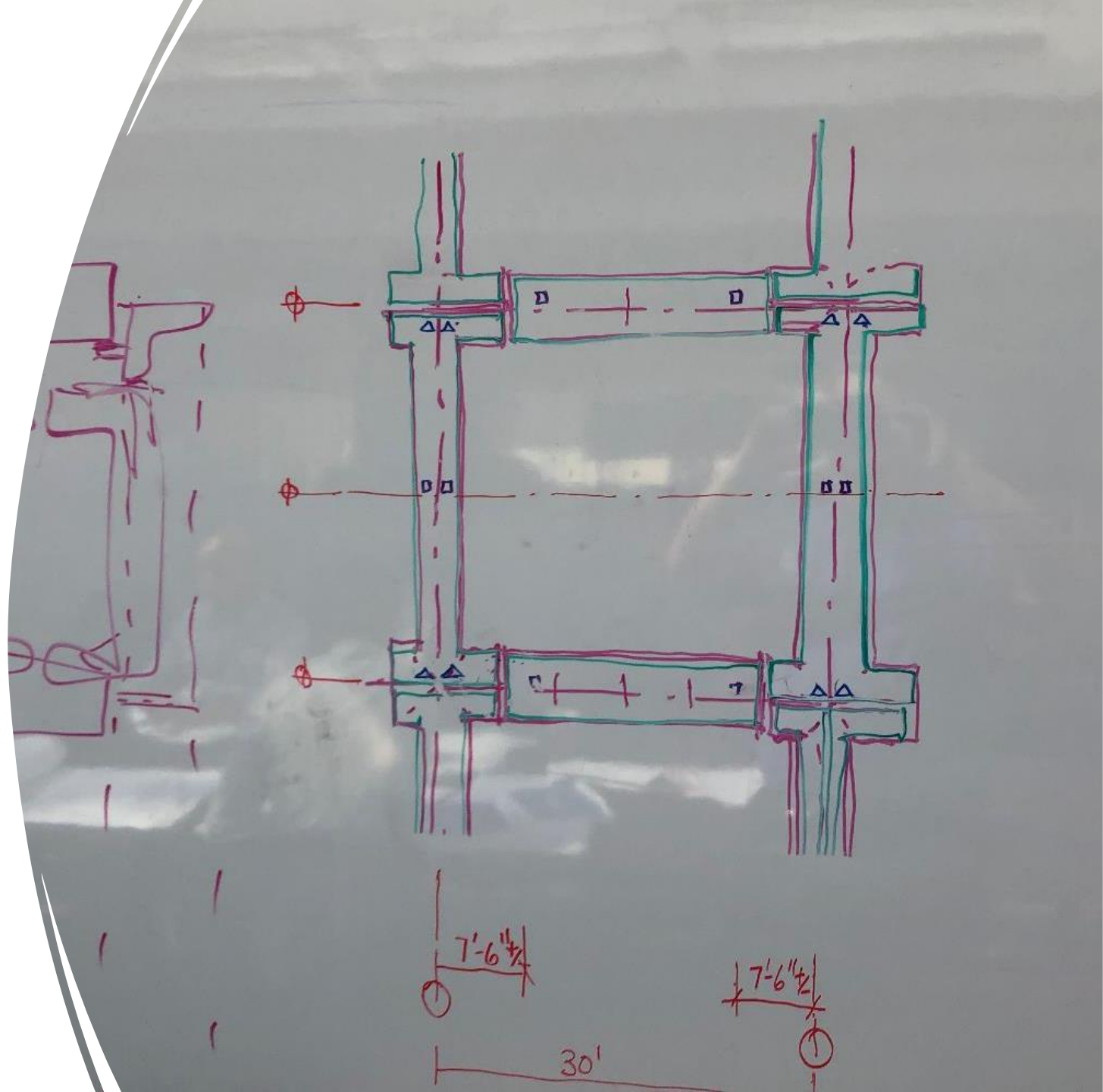
– Aditya (Adi) Yadav (Precast  
Manufacturer)



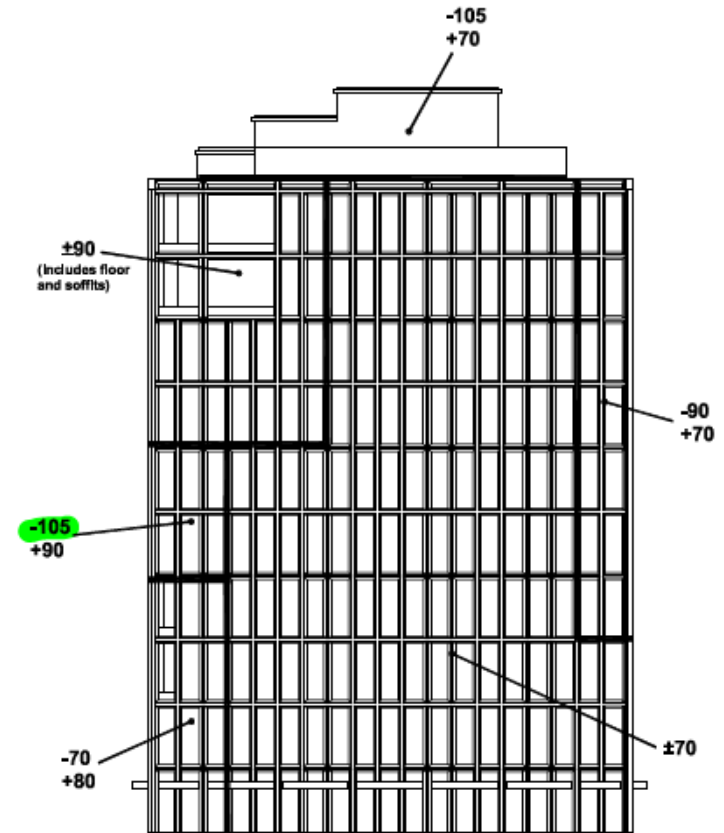


---

# Design Assist



# Precast Design Calculation

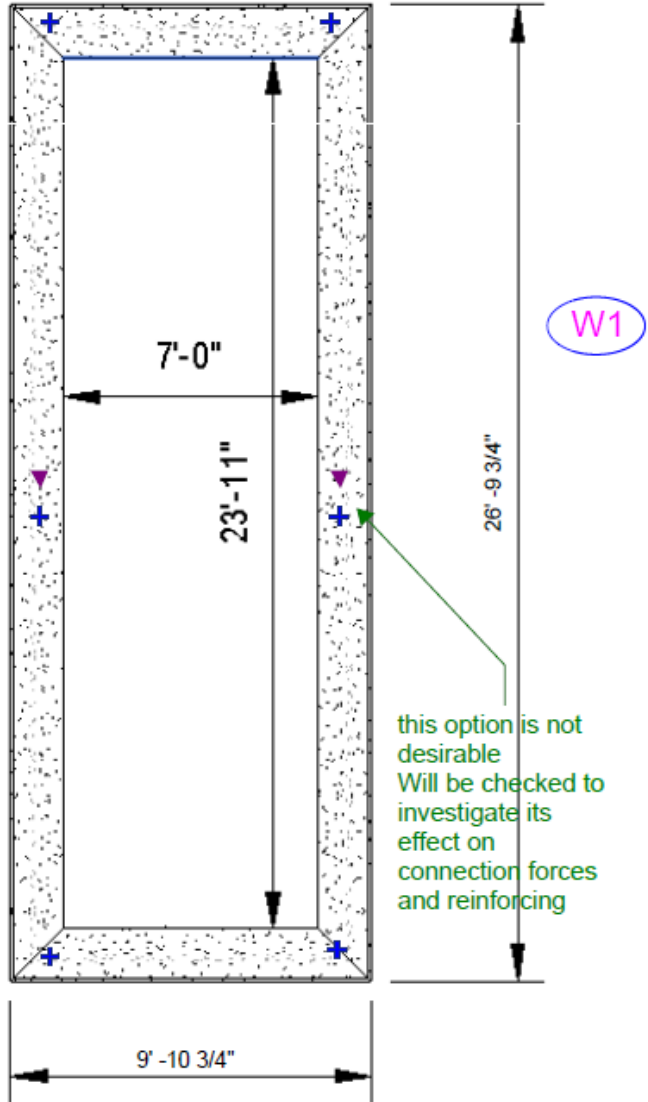


For differential pressures across secondary structural elements, refer to Figure 4.

EAST ELEVATION

For 100-year wind pressures (used for ASD), a load factor of 0.8 can be applied to the specified wind pressures.

Upper panel, Option with bearing connection at the middle



this option is not desirable  
Will be checked to investigate its effect on connection forces and reinforcing

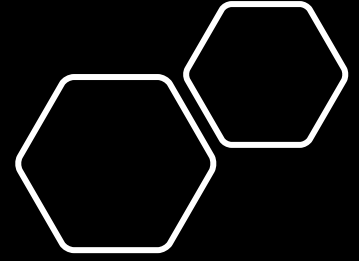
Glazing Panel

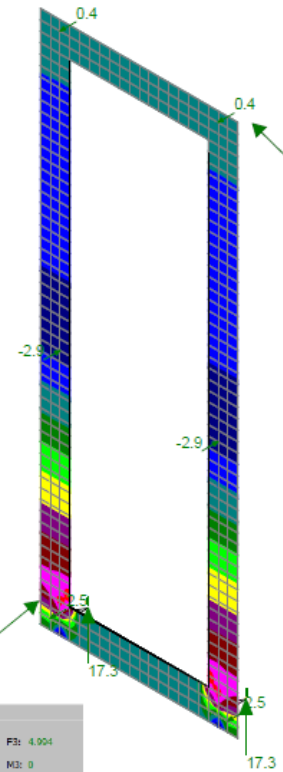
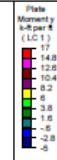
Total LBS

2172.07

PO201	1	21588
PO202	1	22761

corner + 500#





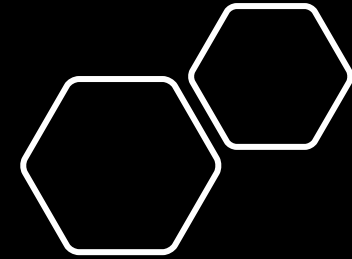
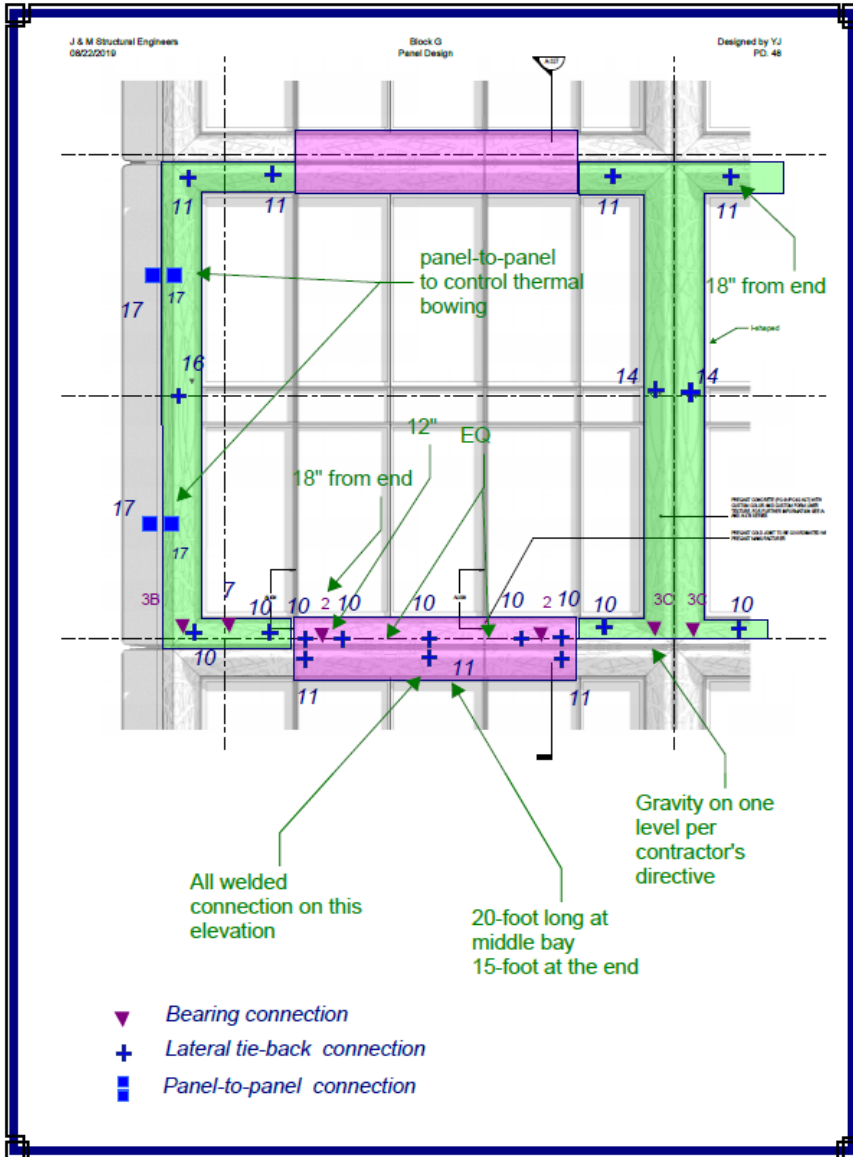
assuming all connections are made during erection

Internal Force Summation

Resultant Forces / Moments (k-ft)		
F1: 0	F2: 35.785	F3: 4.904
M1: 44.046	M2: 0	M3: 0

Results for LC 1, 1.4DL  
Reaction and Moment Units are k and k-ft

J & M Structural Engineers...	Block G	SK - 1
Yuri Jukarev		May 11, 2019 at 11:39 AM
		W1 051119 - with connections at th...



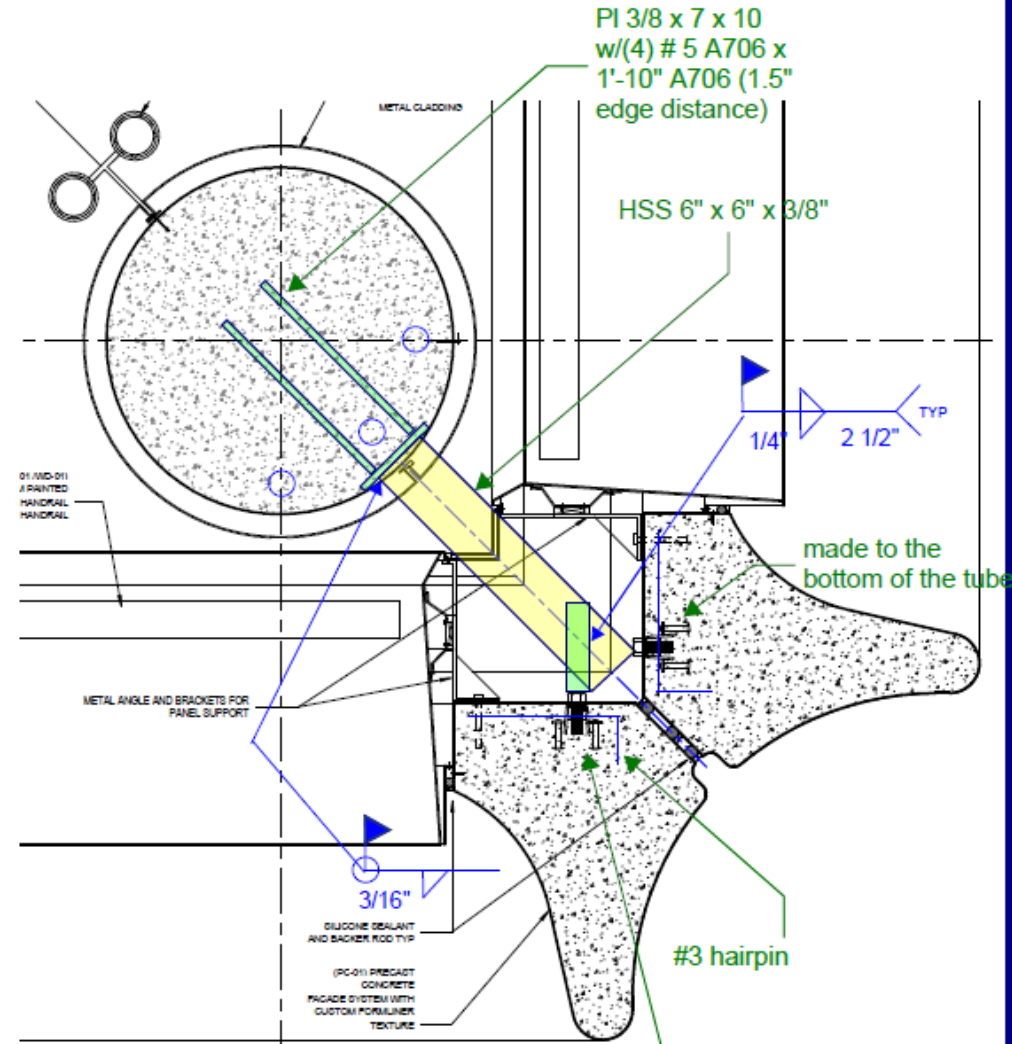
align with mullion ← West Tampa to coordinate placement of window insert at the joint



Main Option

15-foot long at middle bay

20-foot long at middle bay

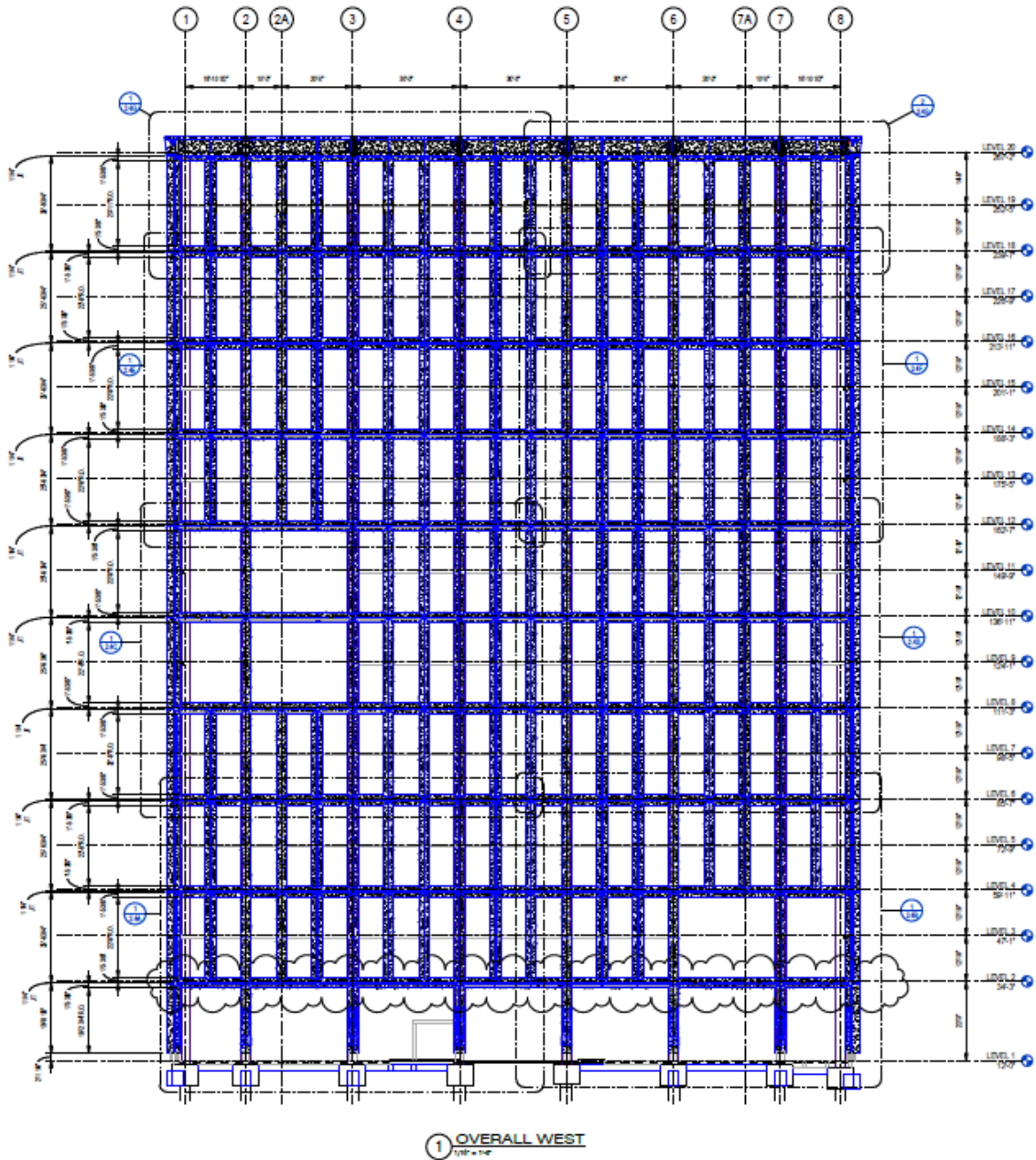


EOR to verify J-finish

6035-PSA insert plus 875 strap

C16

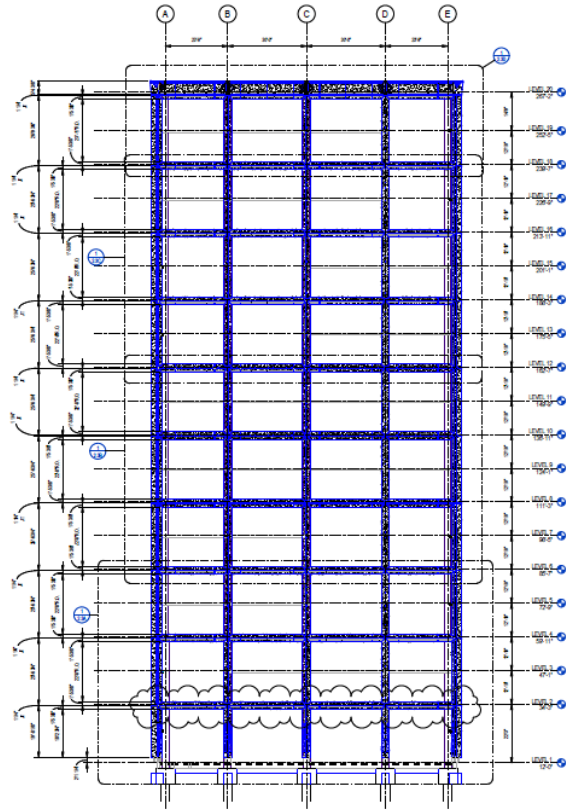




1 OVERALL WEST  
1/8" = 1'-0"



# Precast Shop Drawings



1 OVERALL SOUTH  
10/1/10



NO.	DESCRIPTION	DATE	BY

Connection Symbols:  
 ■ DENOTES GRANT/BEARING CONNECTION  
 ◆ DENOTES PANEL TO PANEL CONNECTION  
 ● DENOTES CONNECTION NUMBER

Prepared Design by:

Prepared Produced by:

**Architect**  
 GUNYON ARCHITECTS, LLC  
 200 WEST 12TH STREET, 12TH FLOOR  
 NEW YORK, NY 10017  
 Architects: GUNYON & KRAMERSON, INC.  
 ONE VESTAL DRIVE, SUITE 200  
 TAMPA, FL 33606

**Structural Engineer**  
 STRUCTURAL CONSULTING ENGINEERS  
 1000 BAYVIEW, 20TH FLOOR  
 NEW YORK, NY 10008

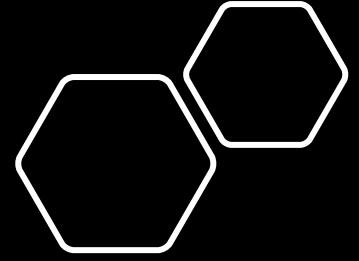
**Issue Date**  
**Project Status**

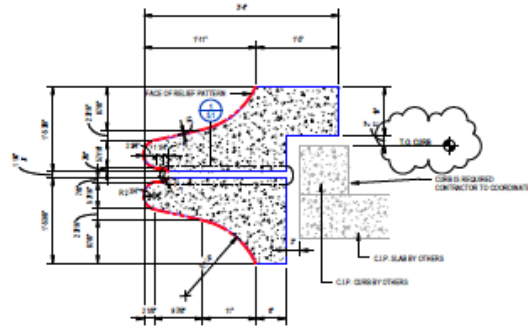
WATER STREET TAMPA - BLOCK G  
 1001 Water Street, Tampa, FL 33602

**OVERALL SOUTH ELEVATION**

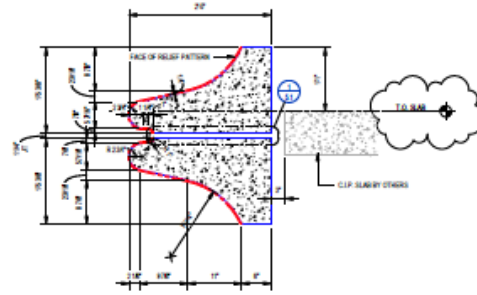
NO.	DESCRIPTION	DATE	BY

2/3

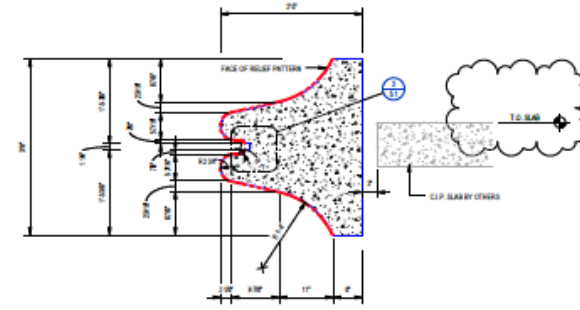




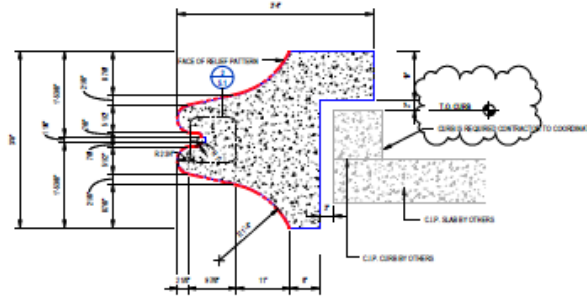
1 SECTION DETAIL  
7/4/10



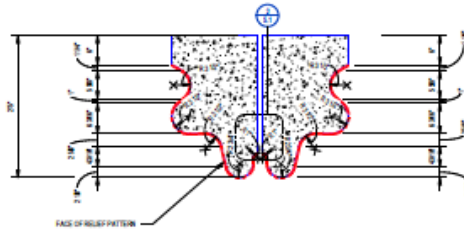
2 SECTION DETAIL  
7/4/10



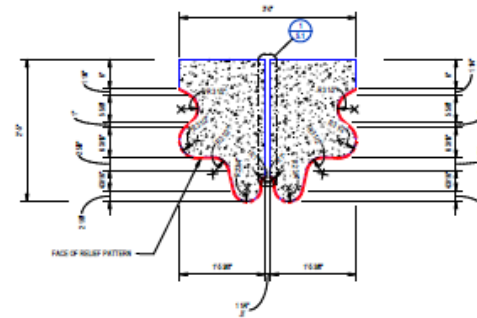
3 SECTION DETAIL  
7/4/10



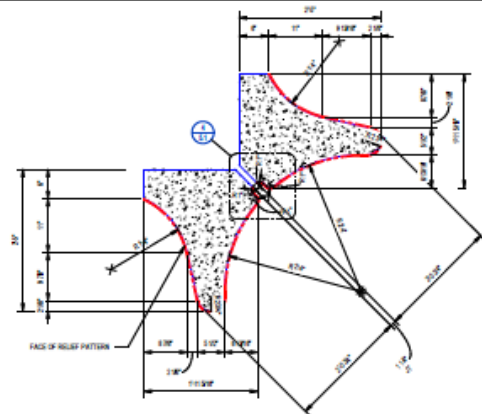
4 SECTION DETAIL  
7/4/10



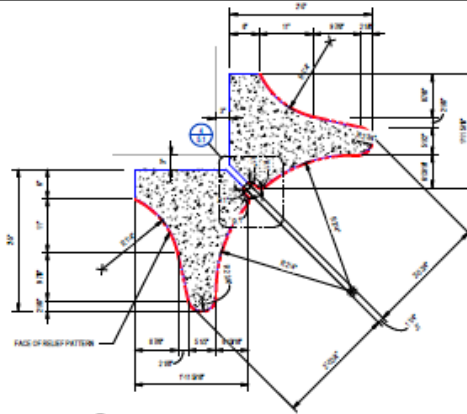
5 PLAN DETAIL  
7/4/10



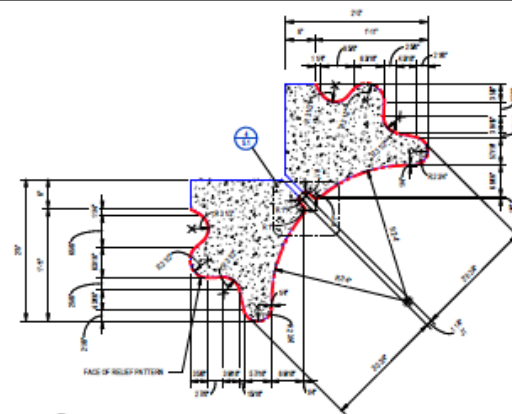
6 PLAN DETAIL  
7/4/10



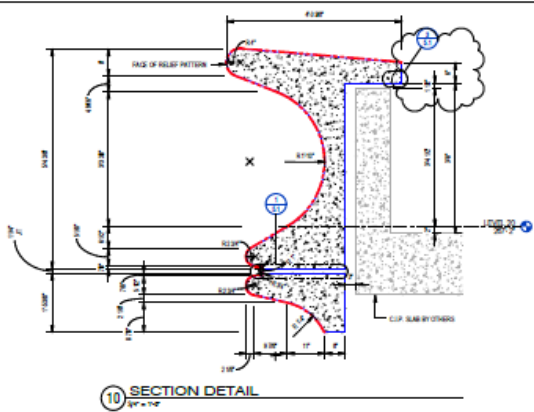
7 PLAN DETAIL  
7/4/10



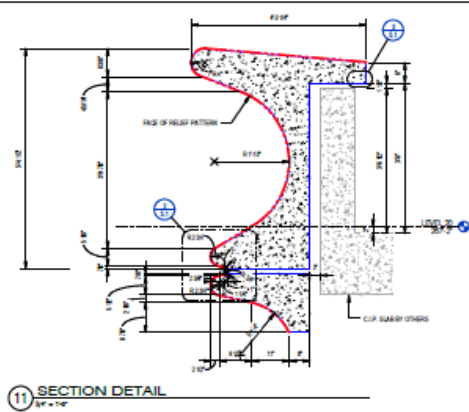
8 PLAN DETAIL  
7/4/10



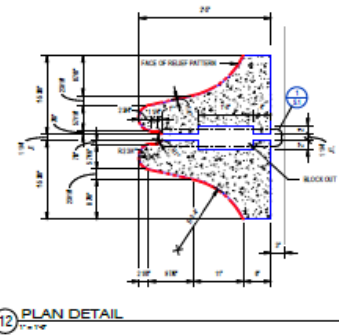
9 PLAN DETAIL  
7/4/10



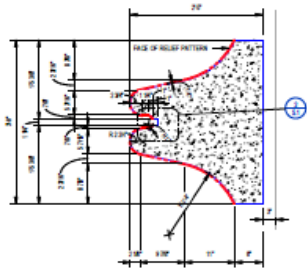
10 SECTION DETAIL  
2" = 1'-0"



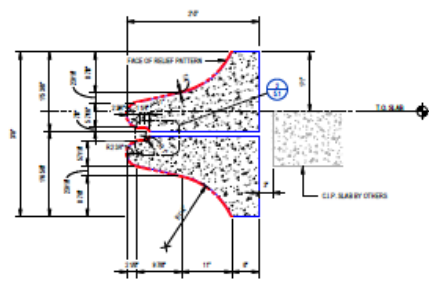
11 SECTION DETAIL  
2" = 1'-0"



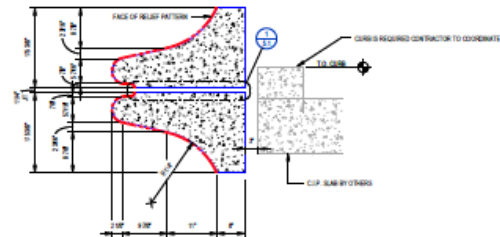
12 PLAN DETAIL  
1" = 1'-0"



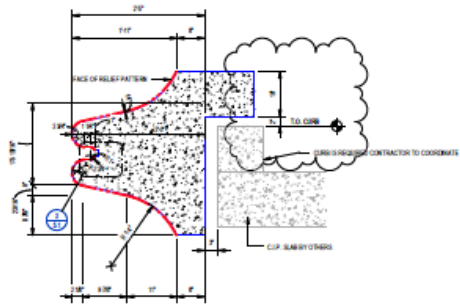
13 PLAN DETAIL  
1" = 1'-0"



14 SECTION DETAIL  
2" = 1'-0"



15 SECTION DETAIL  
2" = 1'-0"



16 SECTION DETAIL  
2" = 1'-0"



Mockup Model



# Full Frame Model

---









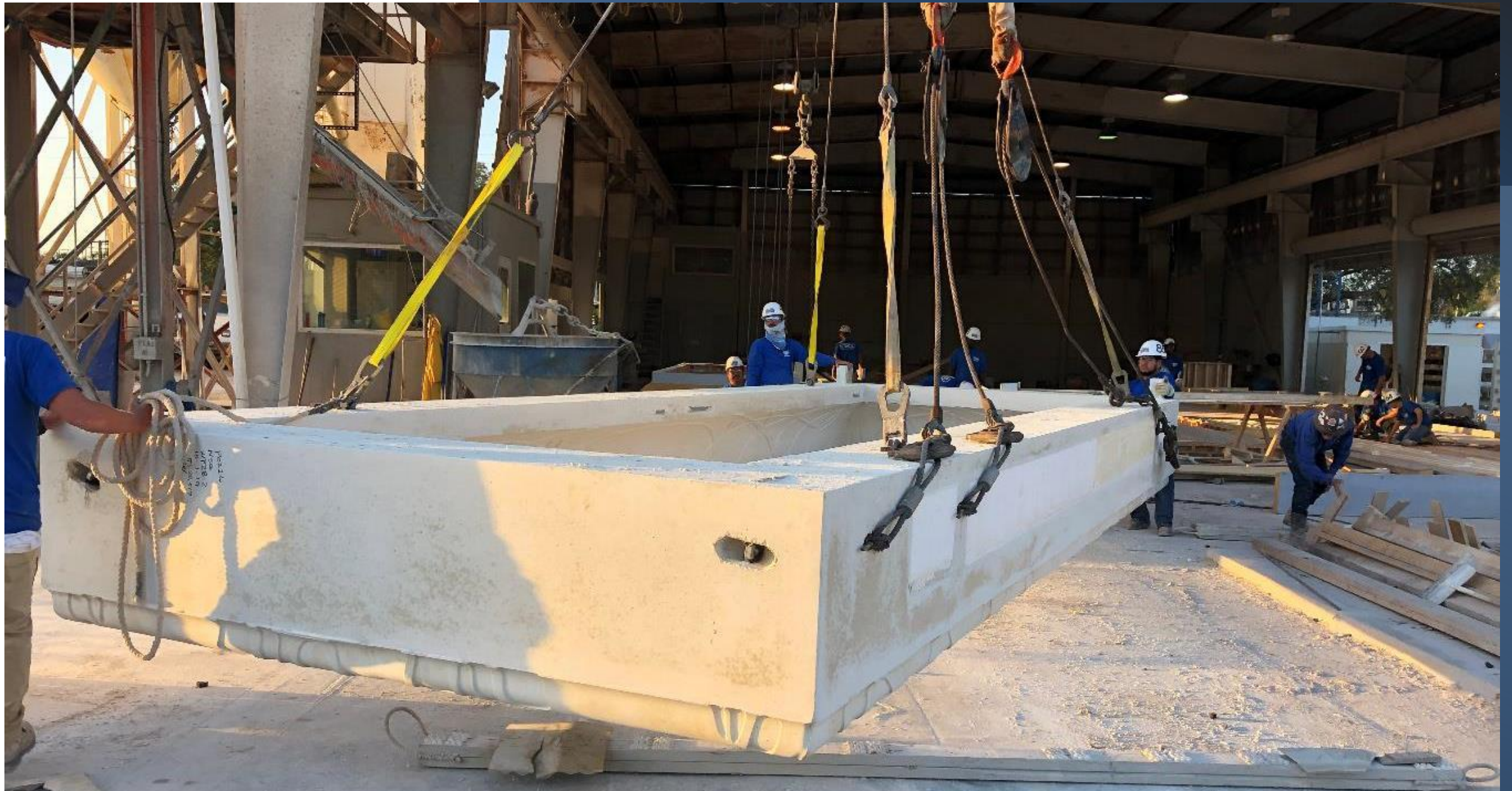
# Fabrication Molds





















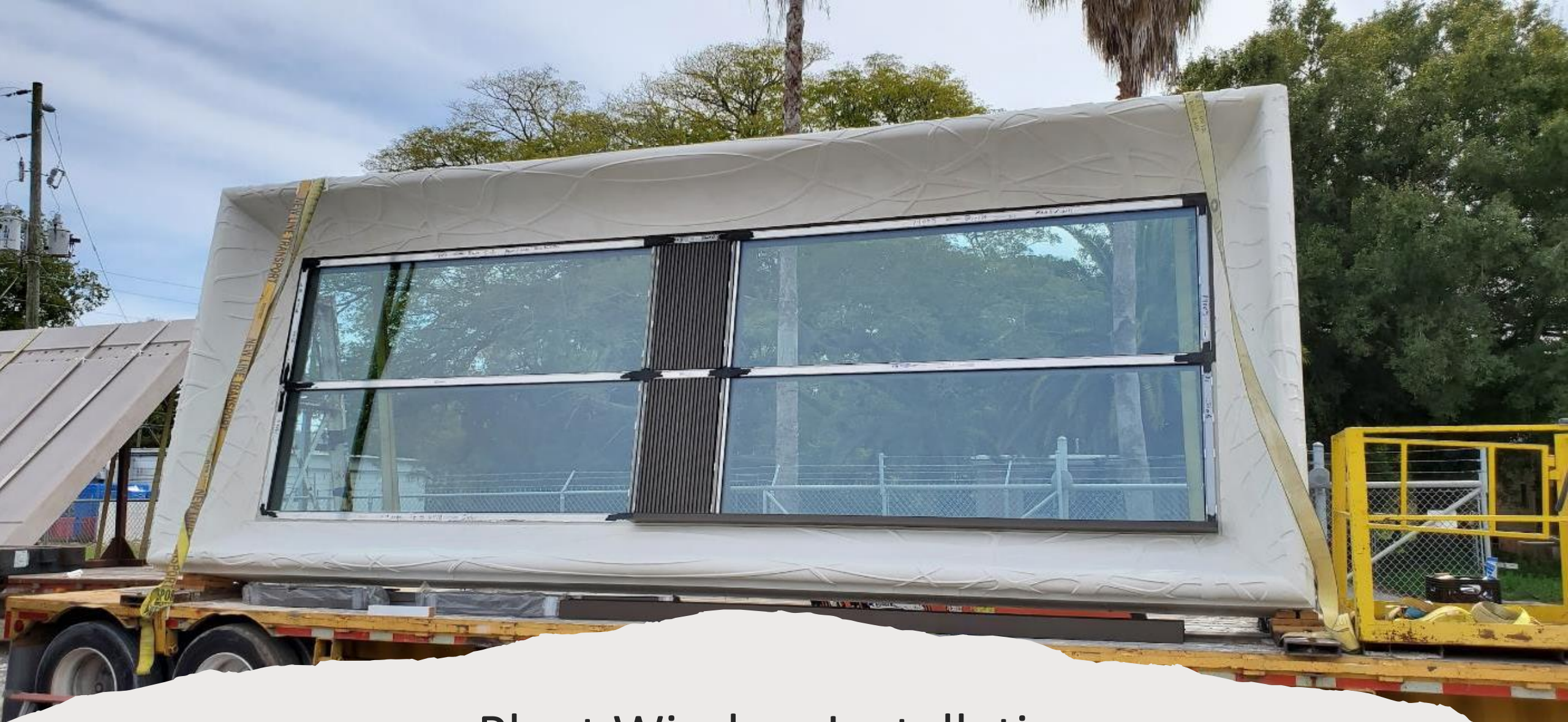


7022  
H56  
WFB-28  
11-7-19  
MT 1457  
04

7022  
H56  
WFB-28  
11-7-19  
MT 1457  
04

7022  
H56  
WFB-28  
11-7-19  
MT 1457  
04

7022  
H56  
WFB-28  
11-7-19  
MT 1457  
04



## Plant Window Installation



4650344

37898

37898

FONTAINE

FONTAINE



Installation

















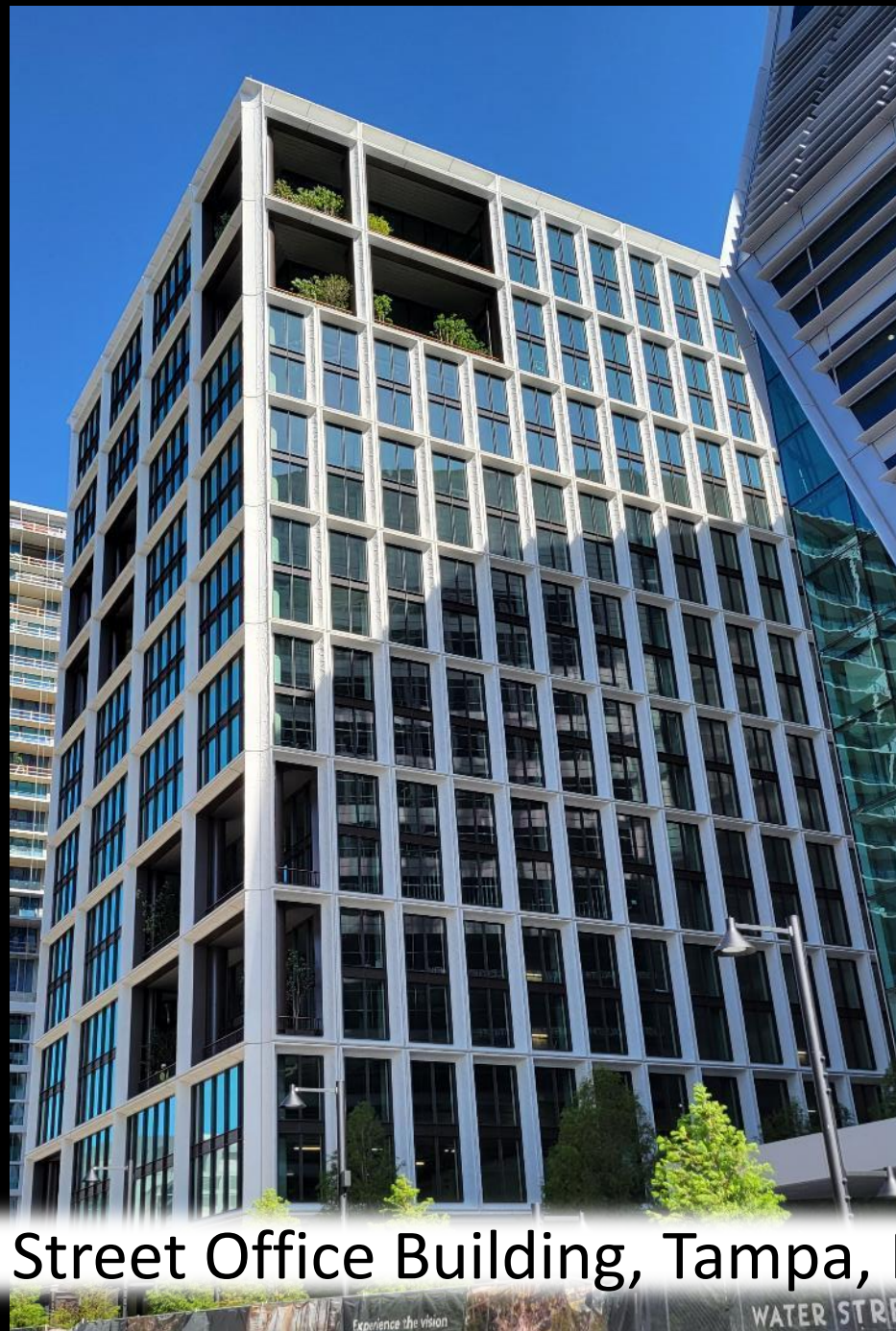












Water Street Office Building, Tampa, Florida