

BOU YOU ROU/Architecture of Ocean



Terumasa Tone, bouyourou Co., Ltd
Yoshiyuki Kawazoe, kousou Inc., Satoshi Okamura, KAP Co., Ltd
Kazuhiko Murata, Akeno Facility Resilience Inc., Shoko Harada, SH ARCHITECTS & DESIGN
Narikazu Shimokawa, Tanaka Kensetsu Co., Ltd., Yoshinori Iwagami, Teramae Namacon Co., Ltd.
Shigeyuki Nishijima, JUST.WILL Co., Ltd., Tomoyasu Yoshino, ZENNAMA, Takayuki Matuyama,
JAPAN CONCRETE ADMIXTURE ASSOCIATION, Atsushi Tomoyose, the University of Tokyo

THE WORLD'S GATHERING PLACE FOR ADVANCING CONCRETE

 **CONCRETE
CONVENTION** 

BOU YOU ROU/Architecture of Ocean

RC architecture for a long-established hotel that expresses the culture of the Sea of Japan coast.



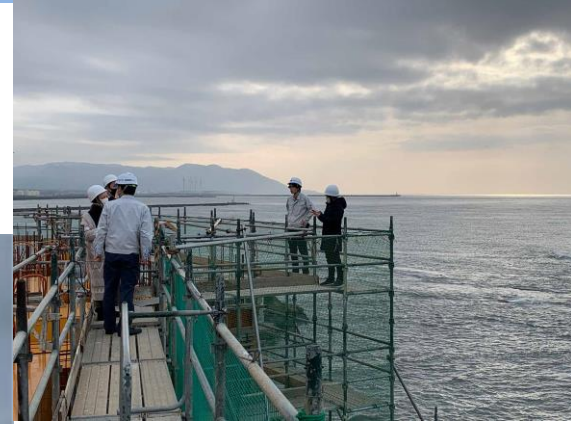
Architecture that conveys the harshness and richness of the Northern Sea of Japan through food and space.

THE WORLD'S GATHERING PLACE FOR ADVANCING CONCRETE



Construction site

Just above the sea
High Durability and Low carbon Concrete



THE WORLD'S GATHERING PLACE FOR ADVANCING CONCRETE



Project Member for Tailor made concrete

Owner	Dai-ichi Bou You Rou Terumasa Tone			
Designer	Architecture Yoshiyuki Kwazoe	Structure Satoshi Okamura	Interior Shuko Harada	Mechanical Kazuhiko Murata
Contractor	General and concrete Narikazu Shimokawa			
Contributer	Academic Atsushi Tomoyose			
	Concrete Tomoyasu Yoshino	Monitoring Shigeyuki Nishijima	Shrinkage ad. Takayuki Matuyama	Conc. supply Yoshinori Iwagami

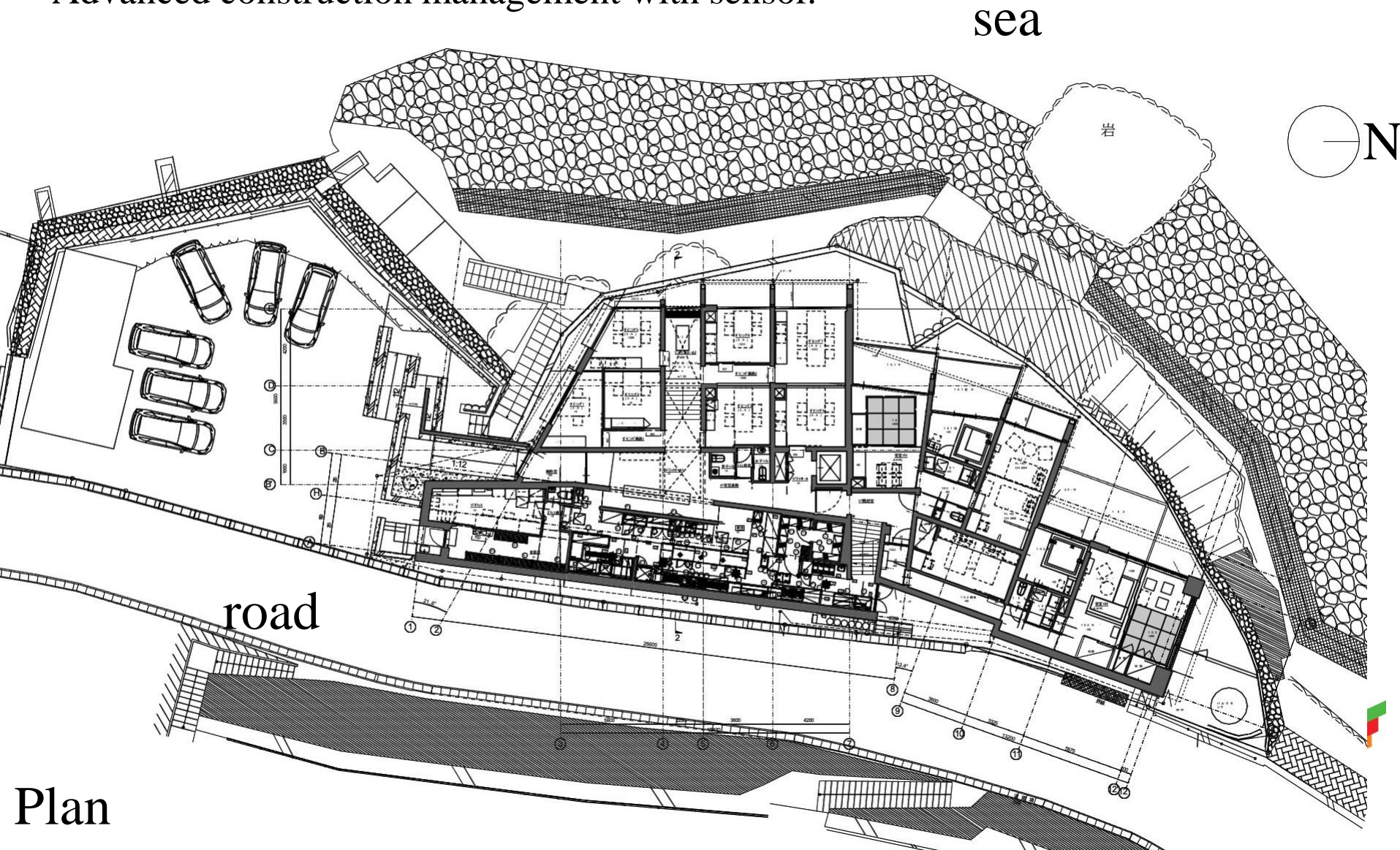
Dining

The architectural formation of RC bearing wall structure can cut out the scenery in an abstract frame.



Engineering Merit

Structural engineering: 300mm thick concrete wall
Advanced construction management with sensor.



Plan

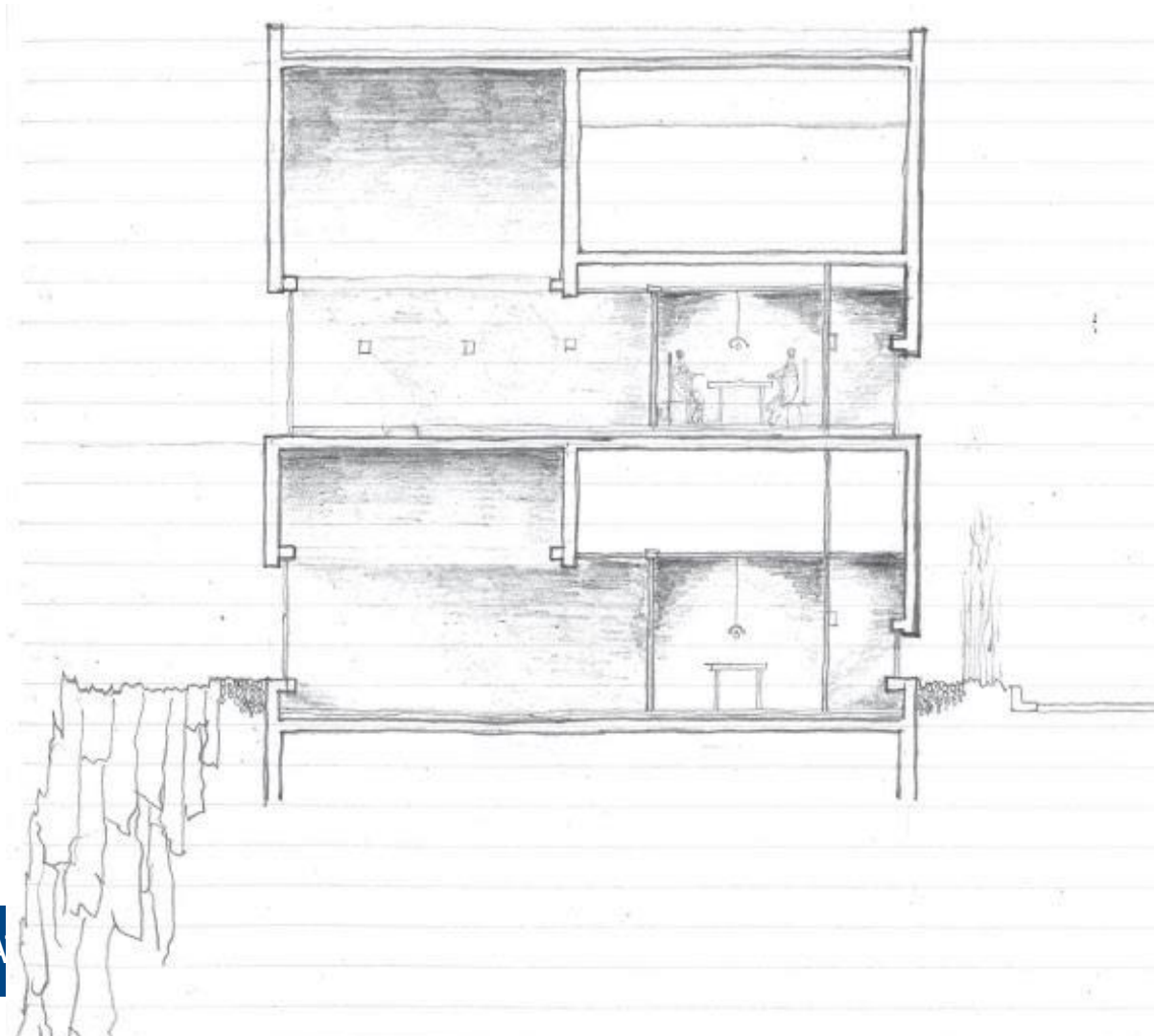
Lobby

Structural engineering: 300mm thick concrete wall
Advanced construction management with sensor.



Section

Structural engineering: 300mm thick concrete wall
Advanced construction management with sensor.



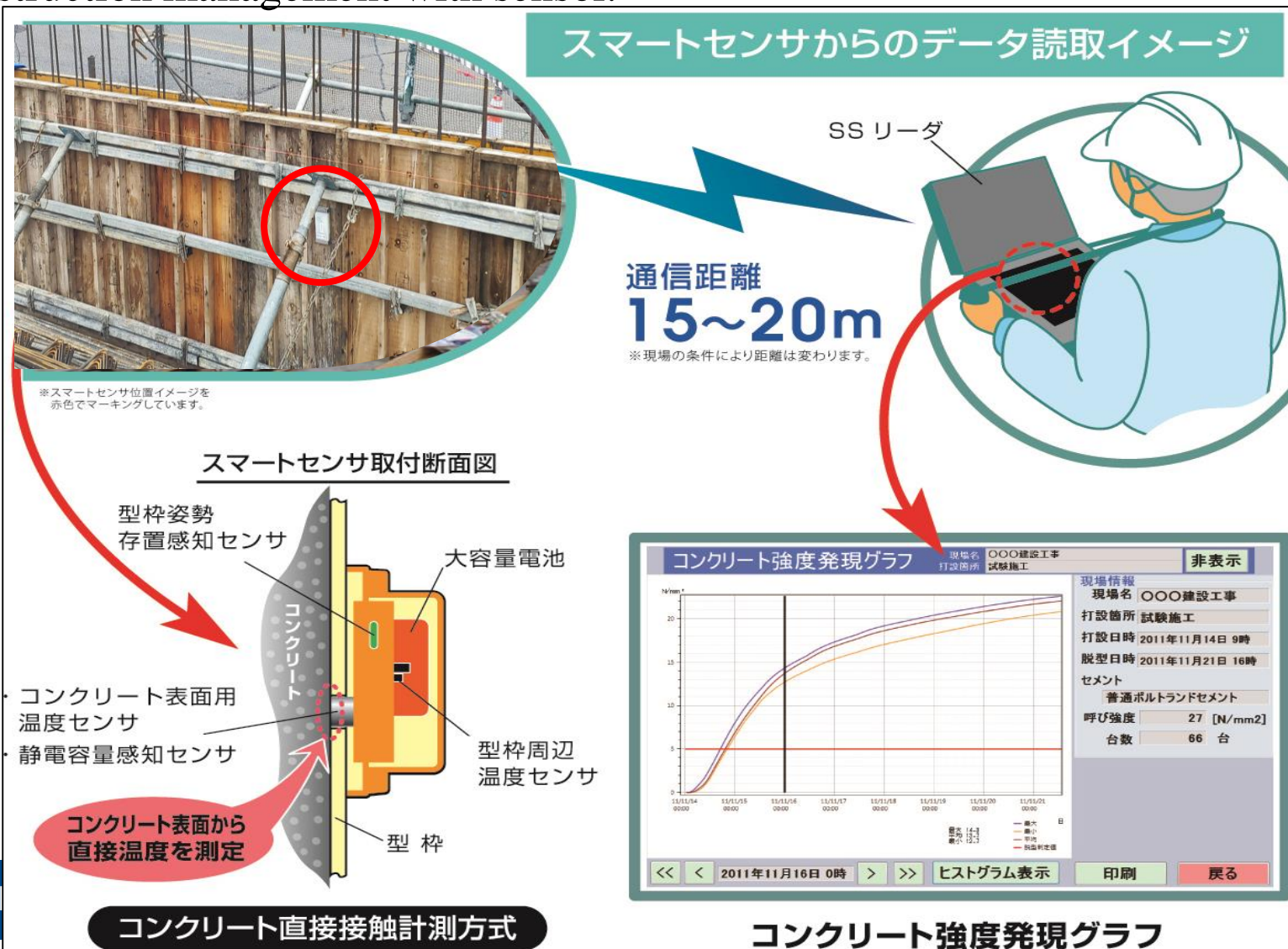
Guest room

Structural engineering: 300mm thick concrete wall
Advanced construction management with sensor.



Engineering merit: Maturity method by newly developed sensor

Structural engineering: 300mm thick concrete wall
Advanced construction management with sensor.



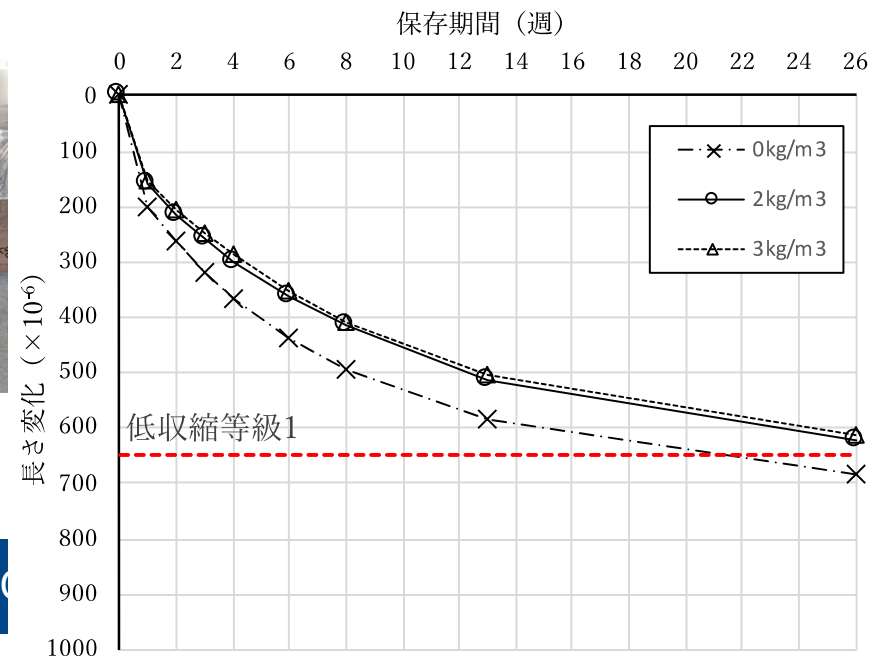
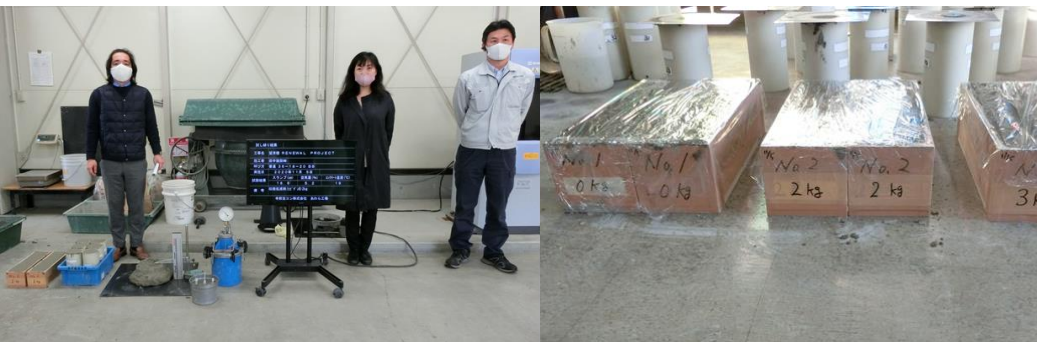
Innovative Use of Concrete as a Construction Material

Slag cement (40% replacement)

Achieve Low-carbon concrete
increase resistance to chloride ion penetration
control expansion by ASR aggregate in this area

In Japan, SCMs are very rarely used for above-ground concrete of buildings

Newly developed shrinkage-reducing agent



Thank you for listening



Book Bou You Rou now!!
<https://www.bouyourou.jp/english/>

THE WORLD'S GATHERING PLACE FOR ADVANCING CONCRETE

