

An ACI Handbook

The Reinforced Concrete Design Handbook

A Companion to *ACI 318M-14*



SP-17M(14) Student Edition



American Concrete Institute
Always advancing

**ACI SP-17M(14)
Student Edition**

THE REINFORCED CONCRETE DESIGN HANDBOOK

A Companion to *ACI 318M-14*

**Editors:
Andrew Taylor
Trey Hamilton III
Antonio Nanni**



American Concrete Institute
Always advancing



THE REINFORCED CONCRETE DESIGN HANDBOOK Student Edition

Copyright by the American Concrete Institute, Farmington Hills, MI. All rights reserved. This material may not be reproduced or copied, in whole or part, in any printed, mechanical, electronic, film, or other distribution and storage media, without the written consent of ACI.

The technical committees responsible for ACI committee reports and standards strive to avoid ambiguities, omissions, and errors in these documents. In spite of these efforts, the users of ACI documents occasionally find information or requirements that may be subject to more than one interpretation or may be incomplete or incorrect. Users who have suggestions for the improvement of ACI documents are requested to contact ACI via the errata website at <http://concrete.org/Publications/DocumentErrata.aspx>. Proper use of this document includes periodically checking for errata for the most up-to-date revisions.

ACI committee documents are intended for the use of individuals who are competent to evaluate the significance and limitations of its content and recommendations and who will accept responsibility for the application of the material it contains. Individuals who use this publication in any way assume all risk and accept total responsibility for the application and use of this information.

All information in this publication is provided “as is” without warranty of any kind, either express or implied, including but not limited to, the implied warranties of merchantability, fitness for a particular purpose or non-infringement.

ACI and its members disclaim liability for damages of any kind, including any special, indirect, incidental, or consequential damages, including without limitation, lost revenues or lost profits, which may result from the use of this publication.

It is the responsibility of the user of this document to establish health and safety practices appropriate to the specific circumstances involved with its use. ACI does not make any representations with regard to health and safety issues and the use of this document. The user must determine the applicability of all regulatory limitations before applying the document and must comply with all applicable laws and regulations, including but not limited to, United States Occupational Safety and Health Administration (OSHA) health and safety standards.

Participation by governmental representatives in the work of the American Concrete Institute and in the development of Institute standards does not constitute governmental endorsement of ACI or the standards that it develops.

Order information: ACI documents are available in print, by download, on CD-ROM, through electronic subscription, or reprint and may be obtained by contacting ACI. Most ACI standards and committee reports are gathered together in the annually revised ACI Manual of Concrete Practice (MCP).

American Concrete Institute
38800 Country Club Drive
Farmington Hills, MI 48331 USA
+1.248.848.3700

Managing Editor: Khaled Nahlawi
Staff Engineers: Daniel W. Falconer, Matthew R. Senecal, Gregory M. Zeisler, and Jerzy Z. Zemajtis
Technical Editors: Shannon B. Banchemo, Emily H. Bush, and Cherrie L. Fergusson
Manager, Publishing Services: Barry Bergin
Lead Production Editor: Carl Bischof
Production Editors: Kelli Slayden, Kaitlyn Hinman, Tiesha Elam
Graphic Designers: Ryan Jay, Aimee Kahaian
Manufacturing: Marie Fuller

DEDICATION



This edition of *The Reinforced Concrete Design Handbook, SP-17M(14)*, is dedicated to the memory of Daniel W. Falconer and his many contributions to the concrete industry. He was Managing Director of Engineering for the American Concrete Institute from 1998 until his death in July 2015.

Dan was instrumental in the reorganization of *Building Code Requirements for Structural Concrete (ACI 318-14)* and *Commentary (ACI 318R-14)* as he served as ACI staff liaison to ACI Committee 318, Structural Concrete Building Code; and ACI Subcommittee 318-SC, Steering Committee. His vision was to simplify the use of the Code for practitioners and to illustrate the benefits of the reorganization with this major revision of *SP-17M*. His oversight and review comments were instrumental in the development of this Handbook.

An ACI member since 1982, Dan served on ACI Committees 344, Circular Prestressed Concrete Structures, and 373, Circular Concrete Structures Prestressed with Circumferential Tendons. He was also a member of the American Society of Civil Engineers. Prior to joining ACI, Dan held several engineering and marketing positions with VSL Corp. Before that, he was Project Engineer for Skidmore, Owings, and Merrill in Washington, DC. He received his BS in civil engineering from the University of Buffalo, Buffalo, NY and his MS in civil and structural engineering from Lehigh University, Bethlehem, PA. He was a licensed professional engineer in several states.

In his personal life, Dan was an avid golfer, enjoying outings with his three brothers whenever possible. He was also an active member of Our Savior Lutheran Church in Hartland, MI, and a dedicated supporter and follower of the Michigan State Spartans basketball and football programs. Above all, Dan was known as a devoted family man dedicated to his wife of 33 years, Barbara, his children Mark, Elizabeth, Kathryn, and Jonathan, and two grandsons Samuel and Jacob.

In his memory, the ACI Foundation has established an educational memorial. For more information visit <http://www.scholarshipcouncil.org/Student-Awards>. Dan will be sorely missed for many years to come.

FOREWORD

The Reinforced Concrete Design Handbook provides assistance to professionals engaged in the design of reinforced concrete buildings and related structures. This edition is a major revision that brings it up-to-date with the approach and provisions of *Building Code Requirements for Structural Concrete (ACI 318M-14)*. The layout and look of the Handbook have also been updated.

The Reinforced Concrete Design Handbook now provides dozens of design examples of various reinforced concrete members, such as one- and two-way slabs, beams, columns, walls, diaphragms, footings, and retaining walls. For consistency, many of the numerical examples are based on a fictitious seven-story reinforced concrete building. There are also many additional design examples not related to the design of the members in the seven story building that illustrate various *ACI 318M-14* requirements.

Each example starts with a problem statement, then provides a design solution in a three column format—code provision reference, short discussion, and design calculations— followed by a drawing of reinforcing details, and finally a conclusion elaborating on a certain condition or comparing results of similar problem solutions.

In addition to examples, almost all chapters in the *Reinforced Concrete Design Handbook* contain a general discussion of the related *ACI 318M-14* chapter.

All chapters were developed by ACI staff engineers under the auspices of the ACI Technical Activities Committee (TAC). To provide immediate oversight and guidance for this project, TAC appointed three content editors: Andrew Taylor, Trey Hamilton III, and Antonio Nanni. Their reviews and suggestions improved this publication and are appreciated. TAC also appreciates the support of Dirk Bondy and Kenneth Bondy who provided free software to analyze and design the post-tensioned beam example, in addition to valuable comments and suggestions. Thanks also go to JoAnn Browning, David DeValve, Anindya Dutta, Charles Dolan, Matthew Huslig, Ronald Klemencic, James Lai, Steven McCabe, Mike Mota, Hani Nassif, Jose Pincheira, David Rogowski, and Siamak Sattar, who reviewed one or more of the chapters.

Special thanks go to StructurePoint and Computers and Structures, Inc. (SAP 2000 and Etabs) for providing a free copy of their software to perform analyses of structure and members.

Special thanks also go to Stuart Nielsen, who provided the cover art using SketchUp.

The Reinforced Concrete Design Handbook is published in two volumes: Chapters 1 through 11 are published in Volume 1 and Chapters 12 through 15 are published in Volume 2. Design aids and a moment interaction diagram Excel spreadsheet are available for free download from the following ACI webpage links:

<https://www.concrete.org/store/productdetail.aspx?ItemID=SP1714DAE>

<https://www.concrete.org/store/productdetail.aspx?ItemID=SP1714DA>

Keywords: anchoring to concrete; beams; columns; cracking; deflection; diaphragm; durability; flexural strength; footings; frames; piles; pile caps; post-tensioning; punching shear; retaining wall; shear strength; seismic; slabs; splicing; stiffness; structural analysis; structural systems; strut-and-tie; walls.

Khaled Nahlawi
Managing Editor

CONTENTS

CHAPTER 1—BUILDING EXAMPLE, p. 9

- 1.1—Introduction, p. 9
- 1.2—Building plans and elevation, p. 9
- 1.3—Loads, p. 12
- 1.4—Material properties, p. 12

CHAPTER 2—STRUCTURAL SYSTEMS*, p. 13

- 2.1—Introduction, p. 13
- 2.2—Materials, p. 13
- 2.3—Design loads, p. 13
- 2.4—Structural systems, p. 14
- 2.5—Floor subassemblies, p. 20
- 2.6—Foundation design considerations for lateral forces, p. 22
- 2.7—Structural analysis, p. 23
- 2.8—Durability, p. 23
- 2.9—Sustainability, p. 23
- 2.10—Structural integrity, p. 23
- 2.11—Fire resistance, p. 23
- 2.12—Post-tensioned/prestressed construction, p. 23
- 2.13—Quality assurance, construction, and inspection, p. 23

CHAPTER 3—STRUCTURAL ANALYSIS*, p. 25

- 3.1—Introduction, p. 25
- 3.2—Overview of structural analysis, p. 25
- 3.3—Hand calculations, p. 26
- 3.4—Computer programs, p. 26
- 3.5—Structural analysis in ACI 318M, p. 27
- 3.6—Seismic analysis, p. 29

CHAPTER 4—DURABILITY, p. 31

- 4.1—Introduction, p. 31
- 4.2—Background, p. 33
- 4.3—Requirements for concrete in various exposure categories, p. 33
- 4.4—Concrete evaluation, acceptance, and inspection, p. 35
- 4.5—Examples, p. 35
- 5.1—Introduction, p. 39
- 5.2—Analysis, p. 39
- 5.3—Service limits, p. 39

CHAPTER 5—ONE-WAY SLABS, p. 39

- 5.4—Required strength, p. 40
- 5.5—Design strength, p. 40
- 5.6—Flexure reinforcement detailing, p. 40
- 5.7—Examples, p. 42**

CHAPTER 6—TWO-WAY SLABS*, p. 81

- 6.1—Introduction, p. 81
- 6.2—Analysis, p. 81
- 6.3—Service limits, p. 81
- 6.4—Shear strength, p. 82

- 6.5—Calculation of required shear strength, p. 83
- 6.6—Calculation of shear reinforcement, p. 84
- 6.7—Flexural strength, p. 84
- 6.8—Shear reinforcement detailing, p. 84
- 6.9—Flexure reinforcement detailing, p. 85
- 6.10—Examples, p. 88

CHAPTER 7—BEAMS, p. 133

- 7.1—Introduction, p. 133
- 7.2—Service limits, p. 133
- 7.3—Analysis, p. 134
- 7.4—Design strength, p. 134
- 7.5—Temperature and shrinkage reinforcement, p. 140
- 7.6—Detailing, p. 140
- 7.7—Examples, p. 143**

CHAPTER 8—DIAPHRAGMS*, p. 281

- 8.1—Introduction, p. 281
- 8.2—Material, p. 281
- 8.3—Service limits, p. 281
- 8.4—Analysis, p. 281
- 8.5—Design strength, p. 283
- 8.6—Reinforcement detailing, p. 284
- 8.7—Summary steps, p. 286
- 8.8—Examples, p. 289

CHAPTER 9—COLUMNS, p. 353

- 9.1—Introduction, p. 353
- 9.2—General, p. 353
- 9.3—Design limits, p. 353
- 9.4—Required strength, p. 354
- 9.5—Design strength, p. 356
- 9.6—Reinforcement limits, p. 357
- 9.7—Reinforcement detailing, p. 357
- 9.8—Design steps, p. 359
- 9.9—Examples, p. 362**

CHAPTER 10—STRUCTURAL REINFORCED CONCRETE WALLS*, p. 391

- 10.1—Introduction, p. 391
- 10.2—General, p. 391
- 10.3—Required strength, p. 393
- 10.4—Design strength, p. 394
- 10.5—Detailing, p. 398
- 10.6—Summary, p. 399
- 10.7—Examples, p. 400

CHAPTER 11—FOUNDATIONS, p. 419

- 11.1—Introduction, p. 419
- 11.2—Footing design, p. 419
- 11.3—Design steps, p. 420
- 11.4—Footings subject to eccentric loading, p. 422
- 11.5—Combined footing, p. 423
- 11.6—Examples, p. 425**

*Chapters omitted from this Student Edition.

**Some examples omitted from this Student Edition. See chapter for full description of example.

CHAPTER 12—RETAINING WALLS, p. 489

- 12.1—General, p. 489
- 12.2—Design limits, p. 490
- 12.3—Applied forces, p. 491
- 12.4—Design strength, p. 492
- 12.5—Reinforcement limits, p. 492
- 12.6—Detailing, p. 493
- 12.7—Summary, p. 493
- 12.8—Examples, p. 495**

CHAPTER 13—SERVICEABILITY, p. 589

- 13.1—Introduction, p. 589
- 13.2—Limitations on member thickness, p. 589
- 13.3—Immediate deflection behavior of beams or one-way slabs, p. 589
- 13.4—Time-dependent deflection calculation, p. 592
- 13.5—Distribution of flexural reinforcement in one-way slabs and beams, p. 592
- 13.6—Shrinkage and temperature reinforcement: nonprestressed, p. 593
- 13.7—Shrinkage and temperature reinforcement – post-tensioned, p. 593
- 13.8—Permissible stresses in prestressed concrete flexural members, p. 594
- 13.9—Permissible stresses at transfer of prestress, p. 594

- 13.10—Permissible concrete compressive stresses at service loads, p. 594
- 13.11—Examples, p. 595
- 13.12—Deflection design aids, p. 616**

CHAPTER 14—STRUT-AND-TIE MODEL*, p. 633

- 14.1—Introduction, p. 633
- 14.2—Concept, p. 633
- 14.3—Design, p. 633
- 14.4—Struts, p. 634
- 14.5—Ties, p. 636
- 14.6—Nodal zones, p. 637
- 14.7—Usual calculation steps and modeling consideration to apply strut-and-tie model, p. 638
- 14.8—Examples, p. 639

CHAPTER 15—ANCHORING TO CONCRETE*, p. 687

- 15.1—Introduction, p. 687
- 15.2—Materials, p. 687
- 15.3—Design assumptions, p. 687
- 15.4—Loads on anchors, p. 688
- 15.5—Discussion on anchors resisting tension, p. 690
- 15.6—Discussion on anchors resisting shear, p. 690
- 15.7—Limitations on installation geometry, p. 691
- 15.8—Examples, p. 692

*Chapters omitted from this Student Edition.

**Some examples omitted from this Student Edition. See chapter for full description of example.

CHAPTER 1—BUILDING EXAMPLE

1.1—Introduction

The building depicted in this chapter was developed to show how, by various examples in this Handbook, to design and detail a common concrete building according to ACI 318M-14. This example building is seven stories above ground and has a one story basement. The building has evenly spaced columns along the grid lines. One column has been removed along Grid C on the second level so that there is open space for the lobby. The building dimensions are:

- Width (north/south) = 22 m (5 bays @ 4.4 m)
- Length (east/west) = 66 m (6 bays @ 11 m)
- Height (above ground) = 28 m
- Basement height = 3 m

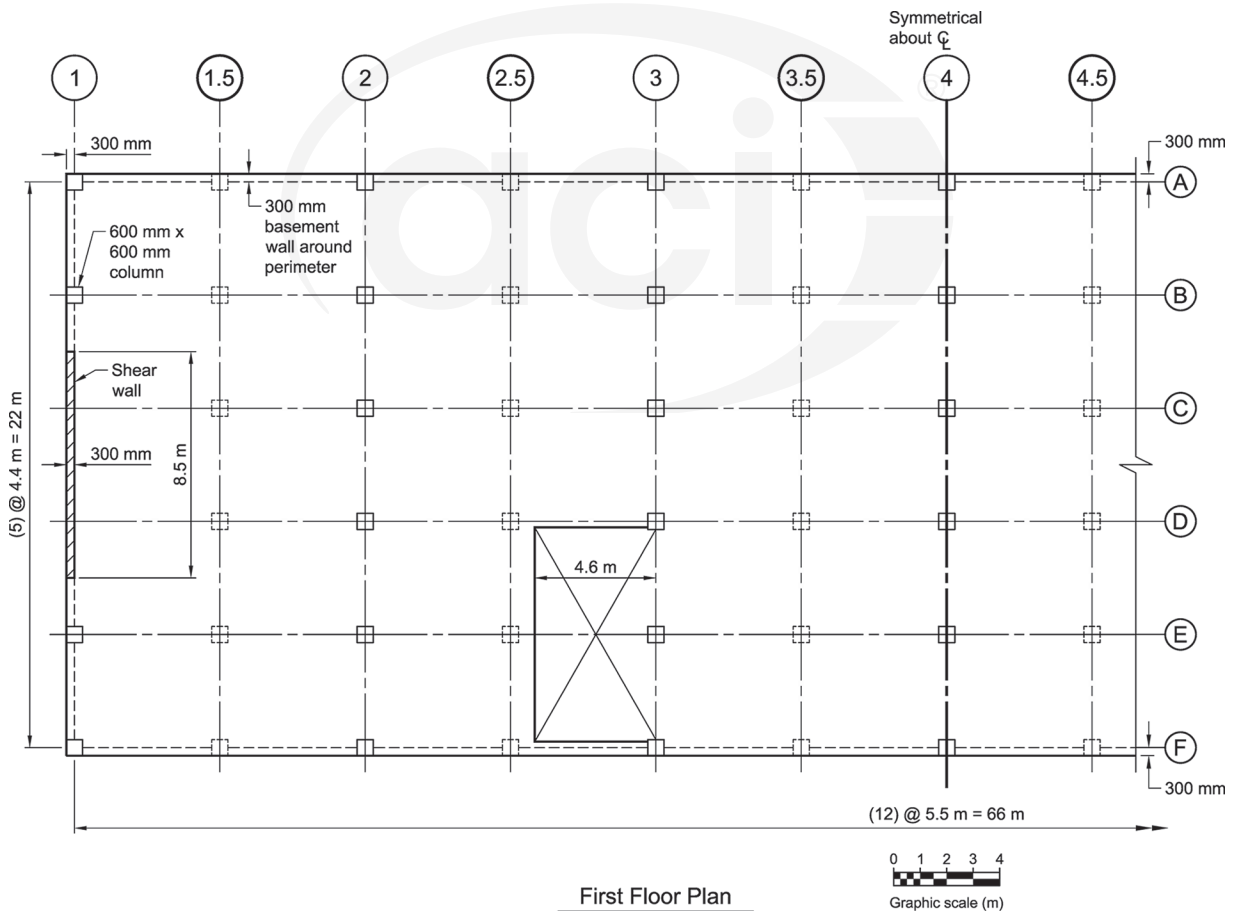
The basement is used for storage, building services and mechanical equipment. It is ten feet high and has an extra column added in every bay along Grids A through F to

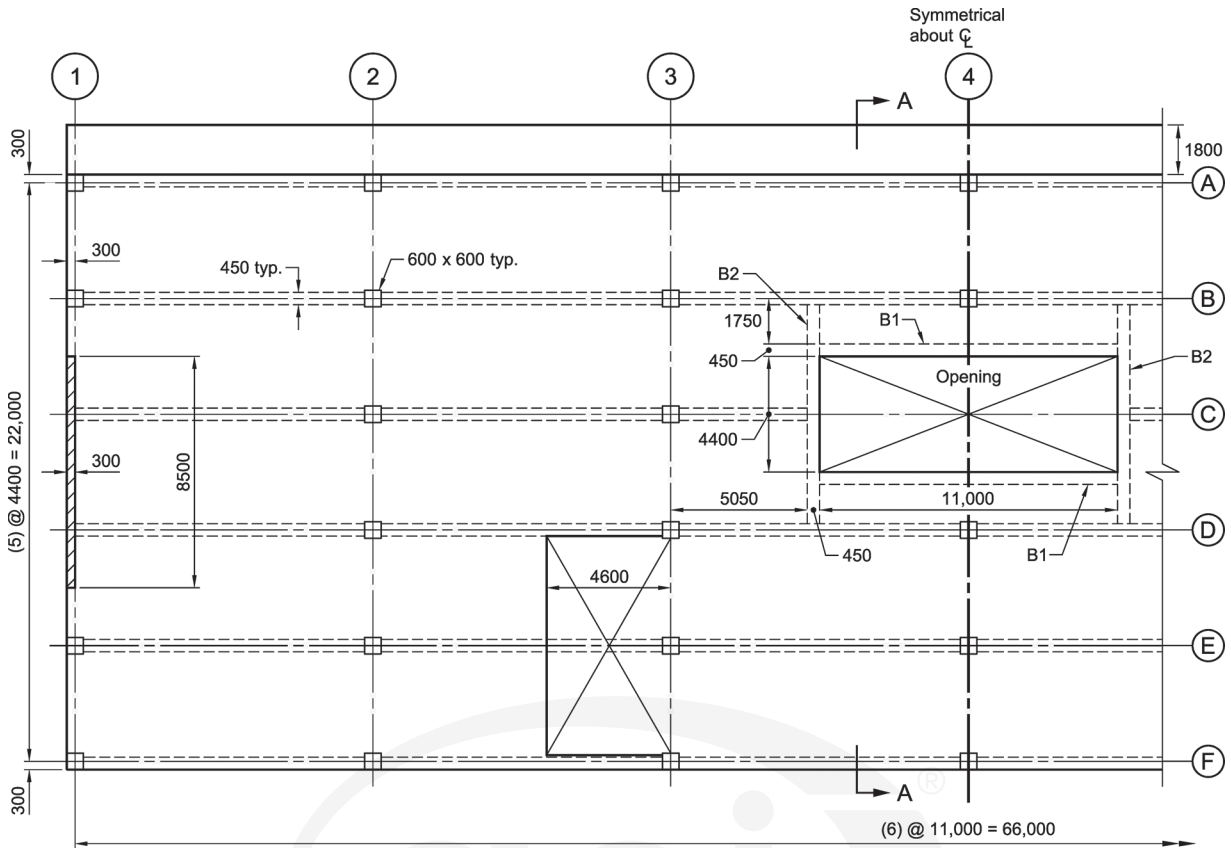
support a two-way slab at the second level. There are basement walls at the perimeter.

The structural system is an ordinary concrete shear wall in the north/south direction and an ordinary concrete moment frame in east/west direction. These basic systems were chosen as a starting point for the examples. Member examples may be expanded to show how they may be designed in intermediate or special systems but a new structural analysis is not done. The following analysis results provide the moments, shears, and axial loads given in the examples in other chapters in the manual. Those examples may modify this initial data to demonstrate some specific code requirement.

1.2—Building plans and elevation

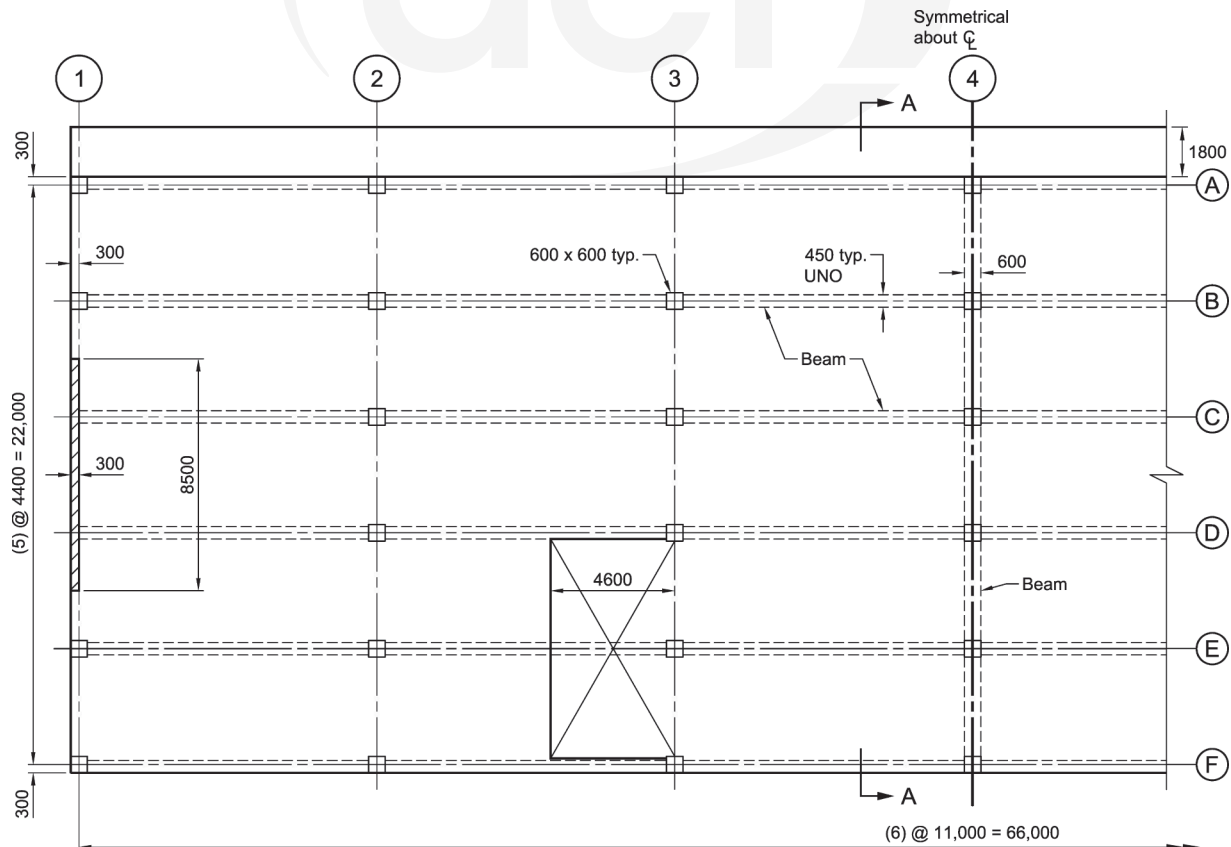
The following building plans and elevation provide the illustration of the example building.





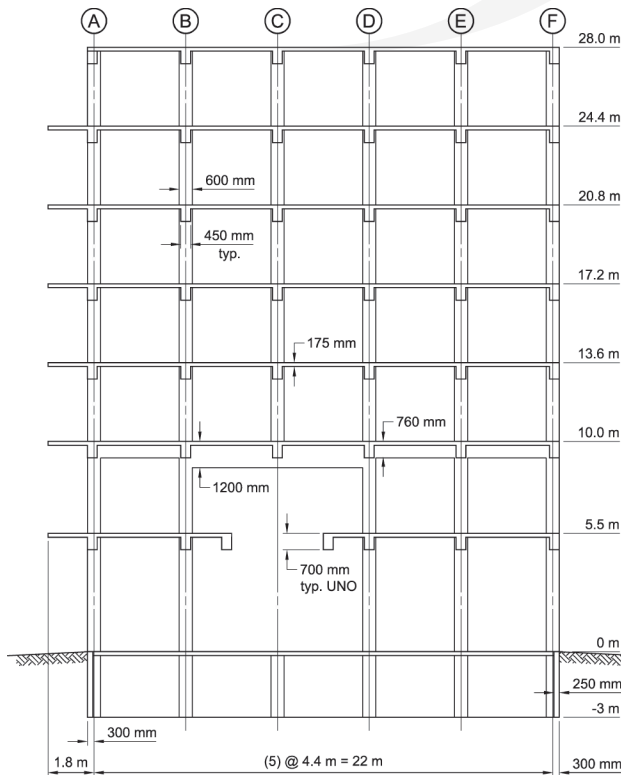
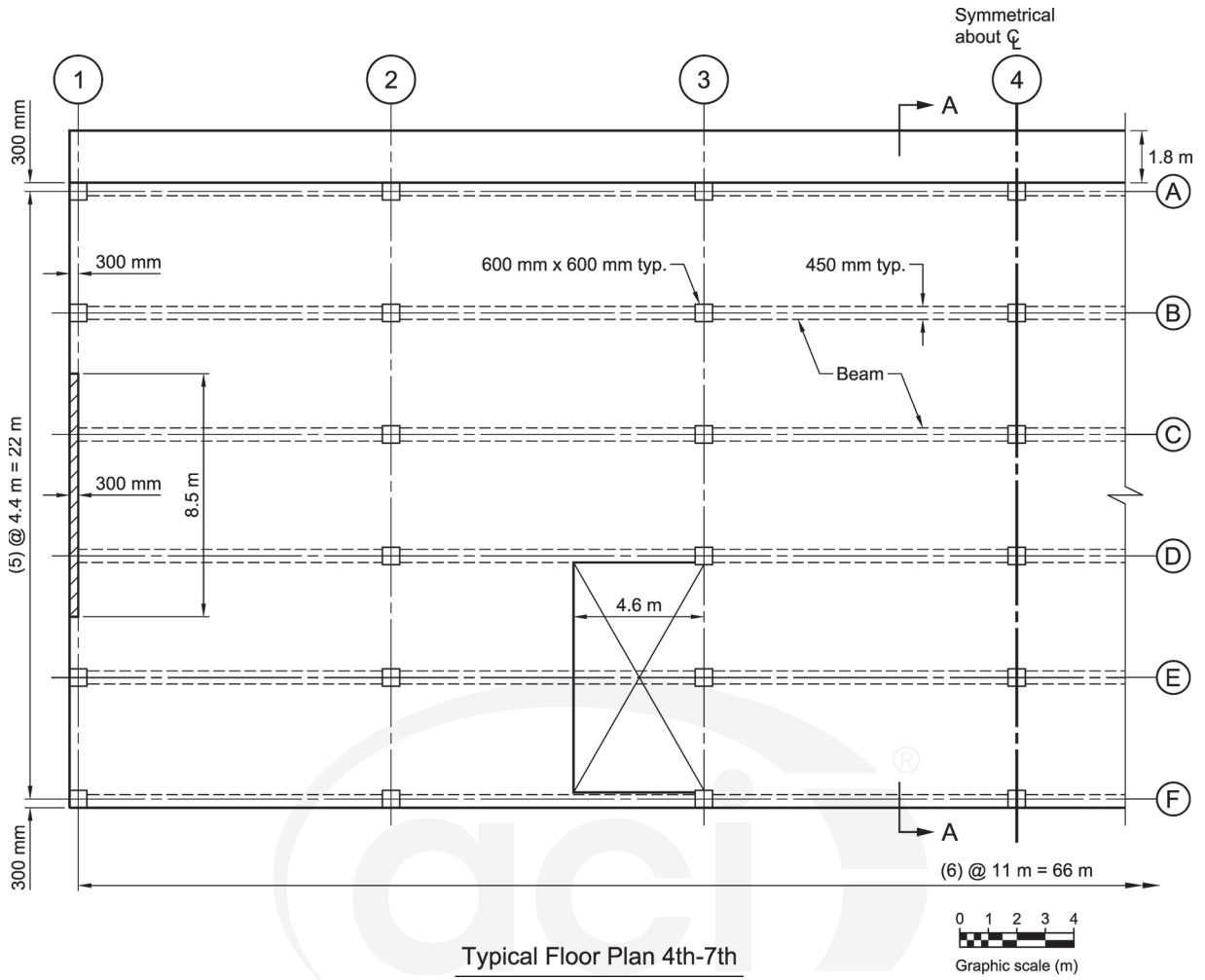
Second Floor Plan

All dimensions are in "mm" UNO



Third Floor Plan

All dimensions are in "mm" UNO



1.3—Loads

The following loads for the example building are generated in accordance with ASCE 7-10. The Risk Category is II.

Gravity Loads

Dead Load, D :

- Self weight
- Additional $D = 0.75 \text{ kN/m}^2$
- Perimeter walls = 0.75 kN/m^2

Live Load:

- 1st and 2nd Floors: Lobbies, public rooms, and corridors serving them = 4.8 kN/m^2
- Typical Floor: Private rooms and corridors serving them = 3.0 kN/m^2

Roof Live Load:

- Unoccupied = 1.7 kN/m^2

Snow Load:

- Ground load, $P_g = 0.96 \text{ kN/m}^2$
- Thermal, $C_t = 1.0$
- Exposure, $C_e = 1.0$
- Importance, $I_s = 1.0$
- Flat roof load, $P_f = 0.96 \text{ kN/m}^2$

Lateral Loads

Wind Load:

- Basic (ultimate) wind speed = 185 km/h
- Exposure category = C
- Wind directionality factor, $K_d = 0.85$
- Topographic factor, $K_{st} = 1.0$
- Gust-effect factor, $G_f = 0.85$ (rigid)
- Internal pressure coefficient, $GC_{pi} = \pm 0.18$
- Directional Procedure

Seismic Load:

- Importance, $I_e = 1.0$
- Site class = D
- $S_S = 0.15$, $S_{DS} = 0.16$
- $S_I = 0.08$, $S_{DI} = 0.13$
- Seismic design category = B
- Equivalent lateral force procedure
- Building frame system; ordinary reinforced concrete shear walls in the north-south direction
 - $R = 5$
 - $C_s = 0.046$
- Moment-resisting frame system; ordinary reinforced concrete moment frame in the east-west direction
 - $R = 3$
 - $C_s = 0.032$

1.4—Material properties

The material properties for any building should have a reasonable knowledge of locally available concrete and steel materials. As a preliminary value for this example, a specified concrete compressive strength, f'_c , of 28 MPa usually provides for a satisfactory floor design. In the US, reinforcing steel for floor design is usually specified as 420 MPa .

The f'_c for columns and walls in multi-story buildings may be different than the f'_c used for the floor system. Concrete placement usually proceeds in two stages for each story; first, the vertical members, such as columns, and second, the floor members, such as beams and slabs. It is desirable to keep the concrete strengths of the vertical members within a ratio of 1.4 of the floor concrete strength. Section 15.3.1 in ACI 318M-14 states that if this ratio is exceeded, the floor concrete in the area immediately around the vertical members must be “puddled” with higher strength concrete. Usually this situation only becomes an issue for taller buildings.

For this example, the building height is moderate and the loads are typical. The locally available aggregate is a durable dolomitic limestone. Thus, the concrete can readily have a higher f'_c than the initial assumption of 28 MPa . A check of the durability requirements of Table 19.3.2.1 in ACI 318M-14 shows that 35 MPa will satisfy the minimum f'_c for all exposure classes. For this concrete, a check of Table 19.2.1.1 in ACI 318M-14 shows that all the code minimum limits are satisfied. The following concrete material properties are chosen:

- $f'_c = 35 \text{ MPa}$
- Normalweight, $w_c = 23.5 \text{ kN/m}^3$
- $E_c = 27,800 \text{ MPa}$
- $\nu = 0.2$
- $e_{th} = 10 \times 10^{-6}/^\circ\text{C}$

The use of lightweight concrete can reduce seismic forces and foundation loads. Based on local experience, however, this type of building won't greatly benefit from the use of lightweight. The modulus of elastic for concrete, E_c , is calculated according to 19.2.2 in ACI 318M. For normal-weight concrete, Eq. 19.2.2.1.b in ACI 318M is applicable. Software programs using finite element analysis can account for the Poisson effect. The Poisson ratio can vary due to material properties, but an average value for concrete is 0.2. Recommendations for the thermal coefficient of expansion, e_{th} , of concrete can be found in ACI 209R.

The most common and most available nonprestressed reinforcement is Grade 60. Higher grades are available but 20.2.2.4 in ACI 318M-14 limits many uses of reinforcing steel to 420 MPa . The modulus of elastic for reinforcement, E_s , is given in 20.2.2.2 in ACI 318M.

Reinforcement Material Properties

- $f_y = 420 \text{ MPa}$
- $f_{yt} = 420 \text{ MPa}$
- $E_s = 200,000 \text{ MPa}$

REFERENCES

American Concrete Institute

ACI 209R-92—Prediction of Creep, Shrinkage, and Temperature Effects in Concrete Structures