



progress through knowledge

program

**AMERICAN
CONCRETE
INSTITUTE**

61st Annual Convention



**MARCH 1-4, 1965
SHERATON-PALACE HOTEL
SAN FRANCISCO, CALIFORNIA**

BOARD OF DIRECTION

President

BRYANT MATHER

Vice-Presidents

A. ALLAN BATES AND ARTHUR R. ANDERSON

Directors

DELMAR L. BLOEM

SAMUEL HOBBS

CLYDE E. KESLER

J. D. LINDSAY

RICHARD C. MIELENZ

GEORGE H. NELSON

PAUL F. RICE

J. J. SHIDELER

J. NEILS THOMPSON

WILLIAM R. WAUGH

A. CARL WEBER

HUBERT WOODS

Past Presidents

LEWIS H. TUTHILL

RAYMOND C. REESE

ROGER H. CORBETTA

Executive Secretary *

WILLIAM A. MAPLES

TECHNICAL ACTIVITIES COMMITTEE

(In charge of convention program and of technical publications)

J. J. SHIDELER, *Chairman*

BRYANT MATHER, *Ex-Officio*

WILLIAM A. MAPLES, *Secretary**

ARTHUR R. ANDERSON

S. D. BURKS

G. E. BURNETT

A. T. HERSEY

CLYDE E. KESLER

PAUL F. RICE

* Address

AMERICAN CONCRETE INSTITUTE

P.O. Box 4754, Redford Station

Detroit, Michigan 48219

CONVENTION REGISTRATION

Monday – Thursday, March 1-4

8:00 a.m. – 5:00 p.m.

in South Lobby, Main Floor

Registration Fee – \$5.00

All ladies and **registered** nonmember visitors are welcome to attend technical sessions, Awards Luncheon, and social activities.

See bulletin board in registration area for special announcements.

TECHNICAL COMMITTEE CHAIRMEN BREAKFASTS

7:30 a.m. Monday – Breakfast for chairmen of 300 Group Technical Committees (by invitation) in English Room.

7:30 a.m. Tuesday – Breakfast for chairmen of 400 Group Technical Committees (by invitation) in English Room.

Note: No special breakfasts scheduled for chairmen of 100, 200, and 500 Group Technical Committees

NOTES FOR PROGRAM PARTICIPANTS

7:30 a.m. Wednesday – Breakfast for program participants (by invitation) in English Room.

8:00 a.m. Thursday – Breakfast for Research Session participants (by invitation) in English Room.

Upon recognition by the Chairman, a discussor will please state his name and company affiliation distinctly and go to the nearest microphone so that he may be heard by all.

A "Convention Review" will be published in the News Letter section of the May 1965 ACI JOURNAL.

ACI CONVENTION AND PRESS HEADQUARTERS

Convention Office, South Corridor,

Main Floor

SPECIAL EVENTS

A door prize will be awarded at the six convention sessions, courtesy of the Northern California Chapter. These drawings are in addition to the daily door prizes given in conjunction with the Technical-Educational Exhibits.

Technical-Educational Exhibits . . . Monday through Thursday in the Rose Room. Have your program card (inside back flap) stamped to qualify for valuable door prizes.

Photographic Exhibit of unusual and outstanding concrete structures, Monday through Thursday.

Ladies Program . . . See schedule elsewhere in this program book.

Architectural Design Competition . . . Winning sketch and four honorable mention entries on display beginning Tuesday.

Cocktail Party . . . 6:30 p.m., Tuesday, Gold Ballroom, compliments of the local committee.

University of Illinois Alumni Breakfast . . . 8:00 a.m., Wednesday, Comstock Room. Tickets, \$2.85 each, are available from alumni and University of Illinois staff members.

Awards Luncheon and Installation of new ACI Officers . . . 12:15 p.m., Wednesday, Ralston Room. Purchase tickets by 9:30 a.m., Wednesday at the convention registration desk. \$4.75 per person.

PCA Alumni Association . . . 5:00 p.m., Wednesday, Rooms 260-262.

Wine Tasting Party . . . 6:00-8:00 p.m., Wednesday, Ralston Room, compliments of the local committee and the Almaden Vineyards.

TECHNICAL COMMITTEE MEETINGS

All meetings are open except those indicated as executive or closed sessions. Meeting topics are in italics. Check Bulletin Board in registration area for changes or for technical committee meetings not listed here.

Sunday Afternoon, February 28 2:00 p.m. - 5:00 p.m.

Committee	Meeting Room
213 Lightweight Aggregates and Lightweight Aggregate Concrete	49'er

Monday Morning, March 1 9:00 a.m. - 12:00 Noon

—	Board Committee on Coordination in the Concrete Industry (<i>Closed meeting</i>)	214
—	Ad Hoc Committee on Cracking (<i>Planning Symposium for 1966 Convention</i>)	49'er
118	Use of Computers (<i>Publication; future symposium; first principles code for computer based on design</i>)	Parlor G
209	Creep and Volume Changes in Concrete	Regency
211	Recommended Practice for Proportioning Concrete Mixes	Bonanza
214	Evaluation of Results of Strength Tests of Concrete (<i>Task group reports; proposed revisions</i>)	262
307	Design and Construction of Reinforced Concrete Chimneys (<i>Draft of proposed specification</i>)	264
313	Concrete Bins and Silos (<i>Reorganization; resumption of work</i>)	260
340	Ultimate Strength Design Handbook (<i>Closed meeting</i>)	Parlor C
344	Circular Prestressed Concrete Structures (<i>Closed meeting</i>)	Parlor D
349	Criteria for Nuclear Containment Vessels	210
421	Design of Reinforced Concrete Slabs, Joint ACI-ASCE (<i>Development of new design recommendations</i>)	Comstock
426	Shear and Diagonal Tension, Joint ACI-ASCE (<i>Subcommittee reports; research on shear</i>)	Concert
443	Concrete Bridge Design (<i>Closed meeting</i>)	Parlor E
504	Joint Sealants (<i>Final draft of committee report</i>)	Golden Gate

Committee	Meeting Room
506 Application of Mortar by Pneumatic Pressure (<i>Discussion of fourth draft</i>)	French Parlor
516 High Pressure Steam Curing (<i>New committee assignment</i>)	Concert
523 Insulating and Cellular Concretes (<i>Third drafts of Recommended Practice for Low Density Concrete</i>)	California

Monday Afternoon, March 1

2:00 p.m. - 5:00 p.m.

— Chapter Forum	Concert
— Board Committee on International Activities (<i>Closed meeting</i>)	Parlor D
115 Research (<i>Executive committee only</i>)	Parlor C
117 Tolerances (<i>1965 work</i>)	264
118 Use of Computers (<i>continuation of morning session</i>)	Parlor G
207 Mass Concrete (<i>Draft of committee report, Principles Applied to Mass Concrete Construction</i>)	Comstock
301 Specifications for Structural Concrete (<i>Final review of specifications; future work</i>)	49'er
309 Consolidation of Concrete (<i>Committee report; recent developments & current research</i>)	Bonanza
311 Inspection of Concrete (<i>Inspection Manual; proposed Inspection Code; papers for publication</i>)	Golden Gate
318 Standard Building Code (<i>Closed meeting</i>)	Regency
322 Design of Structural Plain Concrete (<i>Final draft of committee report</i>)	214
325 Structural Design of Concrete Pavements for Highways and Airports (<i>Subgrade & subbase, prestress, continuous pavements, overlays; preparation of Standards</i>)	260
345 Concrete Bridge Decks (<i>bridge deck problems; future activities</i>)	French Parlor
437 Strength Evaluation of Existing Concrete Structures (<i>Report of Subcommittee 1</i>)	262
443 Concrete Bridge Design (<i>Closed meeting</i>)	Parlor E
523 Insulating and Cellular Concretes (<i>continuation of morning session</i>)	California
531 Structures of Concrete Masonry Units (<i>Review of bibliography; design recommendations</i>)	Concert

Monday Evening, March 1

5:00 p.m.

Committee	Meeting Room
— ACI-PCI Liaison Committee (<i>Closed meeting</i>)	Golden Gate

Monday Evening, March 1

7:00 p.m.

408 Bond Stress (<i>Subcommittee & research reports</i>)	Comstock
441 Reinforced Concrete Columns (<i>Subcommittee activities; research reports; future publications & sessions</i>)	Regency
515 Coatings for Concrete (<i>Recommended Practice</i>)	49'er

Tuesday Morning, March 2

9:00 a.m. - 12:00 Noon

103 Monographs (<i>Closed meeting</i>)	Parlor C
201 Durability of Concrete in Service (<i>Recommended practice</i>)	Comstock
212 Admixtures (<i>Committee work</i>)	Concert
216 Fire Resistance and Fire Protection of Structures (<i>Proposed Guide; future work on time temperature curve & fire test; survey of fires & experience</i>)	French Parlor
302 Concrete Floor Finishes (<i>Closed meeting</i>)	Parlor D
305 Hot Weather Concreting (<i>Outline of revised standard</i>)	Regency
316 Specifications for Concrete Pavements and Bases (<i>Organization of subcommittees</i>)	260
334 Concrete Shell Structures	49'er
435 Deflection of Concrete Building Structures (<i>Redraft of committee report; progress of subcommittee report</i>)	California
437 Strength Evaluation of Existing Concrete Structures (<i>Report of Subcommittee 1</i>)	262
441 Reinforced Concrete Columns (<i>Continuation of Monday evening session</i>)	Golden Gate

Committee	Meeting Room
443 Concrete Bridge Design (<i>Closed meeting</i>)	Parlor E
503 Adhesives for Concrete (<i>Guide expansion; research developments; specifications</i>)	Bonanza
512 Precast Structural Concrete Design and Construction, Joint ACI-ASCE (<i>Draft of recommended practice</i>)	Concert
543 Concrete Piles (<i>Closed meeting</i>)	264

Tuesday Afternoon, March 2
2:00 p.m. - 5:00 p.m.

116 Nomenclature	Golden Gate
215 Fatigue of Concrete (<i>Current research</i>)	Concert
216 Fire Resistance and Fire Protection of Structures (<i>continuation of morning session</i>)	French Parlor
221 Aggregates (<i>Alkali carbonate reaction; freezing & thawing</i>)	Parlor C
318 Standard Building Code (<i>Closed meeting</i>)	Regency
332 Recommended Practice for Residential Concrete Work (<i>Closed meeting</i>)	Parlor G
334 Concrete Shell Structures	49'er
347 Formwork for Concrete (<i>Revisions to Recommended Practice; precast concrete; formwork failures</i>)	California
348 Structural Safety (<i>Exploratory discussions</i>)	Bonanza
423 Prestressed Concrete, Joint ACI-ASCE (<i>Closed meeting</i>)	260
437 Strength Evaluation of Existing Concrete Structures (<i>continuation of morning session</i>)	262
439 High-Strength Reinforcement in Concrete	Comstock
442 Lateral Forces on Multistory Frames (<i>Closed meeting</i>)	Parlor D
503 Adhesives for Concrete (<i>Closed meeting</i>)	Parlor E
506 Application of Mortar by Pneumatic Pressure (<i>Closed meeting</i>)	214
533 Precast Panels (<i>Committee report</i>)	Concert
543 Concrete Piles (<i>Closed meeting</i>)	264

Tuesday Evening, March 2

6:30 p.m.

Cocktail Party in the Gold Ballroom, compliments of the local committee.

Wednesday Evening, March 3

7:00 p.m.

Committee	Meeting Room
333 Design and Construction of Composite Structures, Joint ACI-ASCE (<i>Closed meeting</i>)	49'er
— Publications Committee of Reinforced Concrete Research Council (<i>Closed meeting</i>)	Parlor E

Thursday Evening, March 4

7:00 p.m.

— Executive Committee of Reinforced Concrete Research Council (<i>Closed meeting</i>)	49'er
---	-------

Friday Morning, March 5

8:30 a.m.

— Executive Committee of Reinforced Concrete Research Council (<i>Closed meeting</i>)	Golden Gate
---	-------------

Bonanza

AWARDS LUNCHEON

12:15 p.m.

RALSTON ROOM

ELECTION TO HONORARY MEMBERSHIP

FRANCO LEVI

DOUGLAS MCHENRY

HENRY C. TURNER MEDAL to

DOUGLAS MCHENRY

"For leadership in new developments in structural concepts in concrete"

ALFRED E. LINDAU AWARD to

FELIX CANDELA

"For advanced design and imaginative construction of a wide range of concrete shell structures"

HENRY L. KENNEDY AWARD to

WALTER H. PRICE

"For long-time enthusiastic participation in technical committee and administrative activities of the Institute"

WASON MEDAL FOR RESEARCH to

THOMAS T. C. HSU, FLOYD O. SLATE, GERALD M. STURMAN,
GEORGE WINTER, AND STANLEY OLSEFSKI

For the following papers:

"Microcracking of Plain Concrete and the Shape of the Stress-Strain Curve," by Thomas T. C. Hsu, Floyd O. Slate, Gerald M. Sturman, and George Winter, *ACI JOURNAL*, February 1963

"Mathematical Analysis of Shrinkage Stresses in a Model of Hardened Concrete," by Thomas T. C. Hsu, *ACI JOURNAL*, March 1963

"Tensile Bond Strength Between Aggregate and Cement Paste or Mortar," by Thomas T. C. Hsu and Floyd O. Slate, *ACI JOURNAL*, April 1963

"X-rays for Study of Internal Structures and Microcracking of Concrete," by Floyd O. Slate and Stanley Olsefski, *ACI JOURNAL*, May 1963

WASON MEDAL FOR "THE MOST MERITORIOUS PAPER" to

J. A. HANSON

For his paper "Optimum Steam Curing Procedures in Precasting Plants" published in the ACI JOURNAL, January 1963

CONSTRUCTION PRACTICE AWARD to

JAMES B. LYTTLE

For his paper "Unique Roof Construction at Dulles Airport" published in the ACI JOURNAL, July 1963

Announcement of Student Winners in Architectural Design Competition

Recognition of Retiring Officers

Report of Tellers and Introduction of New Officers

Presentation of Memento to Retiring President

FIRST GENERAL SESSION

9:30 a.m. — 12:00 Noon

Gold Ballroom

CHAIRMAN

S. D. Burks

General Chairman
San Francisco Convention
& Manager, Rock Products Chemicals-West
Dewey and Almy Chemical Division
W. R. Grace & Company
San Leandro, California

Presidential Address

Bryant Mather

President, ACI
& Chief, Engineering Sciences
Branch, Concrete Division
U. S. Army Engineer Waterways
Experiment Station, Corps of Engineers
Jackson, Mississippi

**Proposed ACI Standard:
Recommended Practice for
Selecting Proportions for
No-Slump Concrete**

Paul Klieger

Chairman, Subcommittee 2
of Committee 211
& Manager, Applied Research Section
Portland Cement Association
Research and Development Laboratories
Skokie, Illinois

**Technical Committee
Progress Reports**

**Moderated by
Samuel J. Henry**
Technical Director

American Concrete Institute
Detroit, Michigan

Committee 103, Monographs

G. E. Burnett

Chairman, Committee 103
& Chief Research Scientist
U. S. Bureau of Reclamation
Denver, Colorado

**Committee 340, Ultimate
Strength Design Handbook**

Edward Cohen

Chairman, Committee 340
& Associate
Ammann and Whitney
Consulting Engineers
New York, New York

Committee 408, Bond Stress

Phil M. Ferguson

Chairman, Committee 408
& Professor of Civil Engineering
University of Texas
Austin, Texas

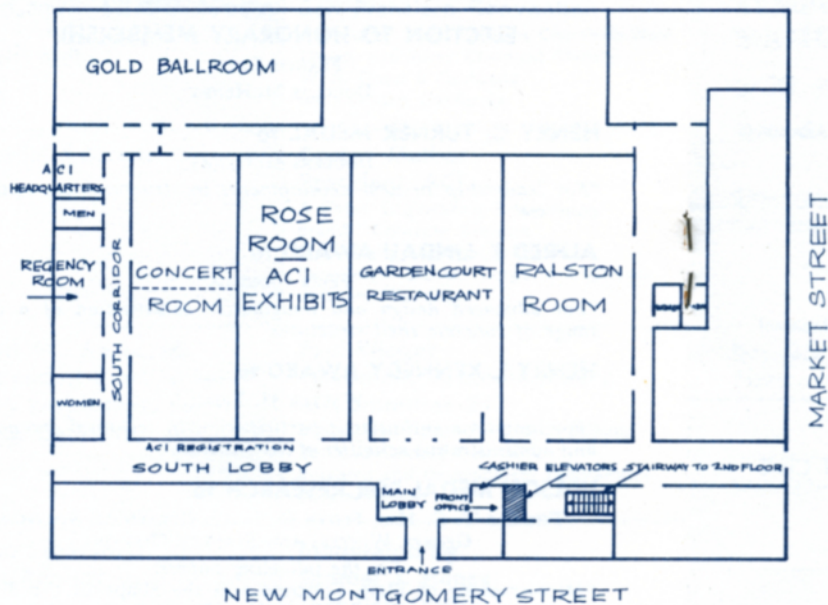
**Committee 531, Structures of
Concrete Masonry Units**

R. O. Hedstrom

Chairman, Committee 531
Associate Development Engineer
Portland Cement Association
Research and Development Laboratories
Skokie, Illinois

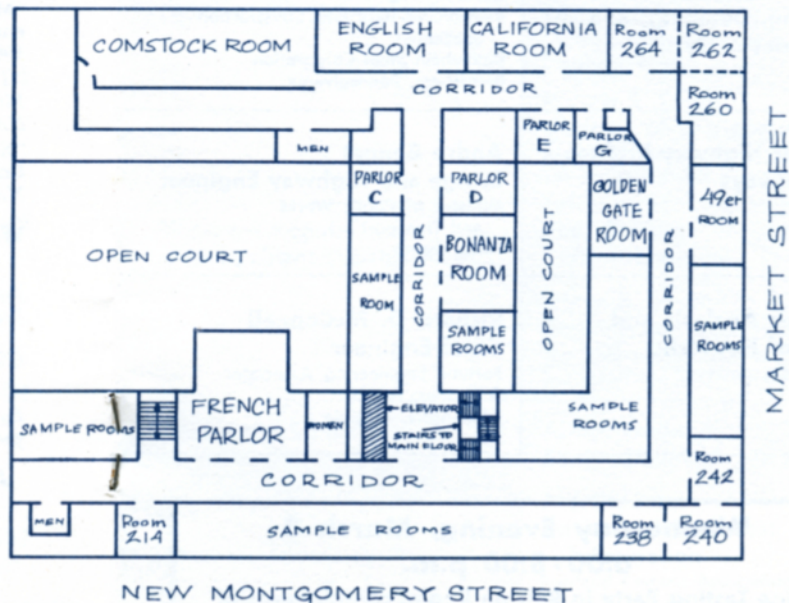
ROOM LOCATOR MAP FOR SHERATON-PALACE HOTEL

MAIN FLOOR



Note: Rooms 210 and 220 are not shown on this floor plan, but they are located on Second Floor.

SECOND FLOOR



<p>CONCURRENT SESSION SYMPOSIUM ON USE OF COMPUTERS 2:30 p.m. — 5:30 p.m. Concert Room</p>	<p>CHAIRMAN A. M. Lount Chairman ACI Committee 118 & President, A. M. Lount & Associates & Enelco Ltd. Toronto, Ontario</p>
<p>Statistical Quality Control</p>	<p>H. A. Radzikowski Deputy Director for Development Office of Research and Development Bureau of Public Roads Washington, D. C.</p>
<p>Computers and Thin Shell Analysis</p>	<p>D. P. Billington Associate Professor of Civil Engineering Princeton University Princeton, New Jersey</p>
<p>Automatic Data Processing for Reinforcing Bar Estimating, Detailing, and Shop-Order Entry</p>	<p>William C. Black Chief Engineer Reinforcing Bars and Construction Specialties Bethlehem Steel Corporation Bethlehem, Pennsylvania</p>
<p>Design of Highway Bridges and Highways</p>	<p>Andre Bonnet Bridge and Highway Engineer Ministry of Public Works and Transport Paris, France</p>
<p>Computer Analysis and Design of Flat-Slabs and Plates</p>	<p>Richard D. McConnell Chief Engineer Fortune Engineering Associates & Partner, ASDEC Alexandria, Virginia</p>

<p>CONCURRENT SESSION</p>	<p>CHAIRMAN Thomas J. Reading Chairman ACI Committee 506</p>
<p>SYMPOSIUM ON SHOTCRETE 2:30 p.m. — 5:00 p.m. Gold Ballroom</p>	
<p>Shotcrete as a Construction Material</p>	<p>Thomas J. Reading Chief Materials Engineer Missouri River Division, U. S. Army Corps of Engineers Omaha, Nebraska</p>
<p>Dry-Mix Shotcrete Placement</p>	<p>Theodore R. Crom President The Crom Corporation Gainesville, Florida</p>
<p>Wet-Mix Shotcrete Practice</p>	<p>Theodore A. Hoffmeyer Senior Engineer Department of Plant Services University of Minnesota Minneapolis, Minnesota</p>
<p>Structural Quality Lightweight Shotcrete</p>	<p>Philip D. Barnard District Manager Southern Inspection Service, Inc. Houston, Texas</p>
<p>Shotcrete Repairs of Waterfront Substructures</p>	<p>Robert E. Tobin Director of Engineering Ridgelite Products, Inc. Los Angeles, California</p>
<p>Laboratory Study of Shotcrete</p>	<p>Paul J. Fluss Testing Engineer</p> <p>Glenn E. Gibson Construction Supervisor San Francisco Port Authority San Francisco, California</p> <p>Albert Litvin Senior Development Engineer</p> <p>J. J. Shideler Director of Technical Information Portland Cement Association Research and Development Division Skokie, Illinois</p>

Wednesday Evening, March 3
6:00 - 8:00 p.m.
Wine Tasting Party in Ralston Room, compliments of the local committee and the Almaden Vineyards.

CONCURRENT SESSION

CONSTRUCTION SESSION

9:30 a.m. — 12:00 Noon

Ralston Room

CHAIRMAN

Robert F. Adams
President, ACI Northern California Chapter
& Supervisor of Concrete Laboratory
California Department of Water Resources
Sacramento, California

Reinforced Concrete Chimney at Oak Ridge, Tennessee

Arthur B. Cassidy
Manager
Chimney Division

D. W. MacDonald
Chimney Construction Superintendent
M. W. Kellogg Company
New York, New York

Construction of the Accelerator Housing at the Stanford Linear Accelerator Center

Everette W. Osgood

James Keith
Aetron-Blume-Atkinson
Palo Alto, California

Concrete Lining of the San Luis Canal

Max R. Johnson
Associate Project Construction Engineer
San Luis Unit of the Central Valley Project
U. S. Bureau of Reclamation
Los Banos, California

Bell-Pier Construction: Recent Developments and Trends

Ben C. Gerwick, Jr.
President
Ben C. Gerwick, Inc.
San Francisco, California

CONCURRENT SESSION

SESSION ON REINFORCED CONCRETE COLUMNS

9:30 a.m. — 12:00 Noon

Gold Ballroom

CHAIRMAN

Boris Bresler
Chairman
ACI-ASCE Committee 441

Brief Report on Committee Activities

Boris Bresler
Professor of Structural Engineering and Structural Mechanics
University of California
Berkeley, California

The Reinforced Concrete Column in Perspective

Mete A. Sozen
Professor of Civil Engineering
University of Illinois
Urbana, Illinois

Bengt B. Broms
Director
Royal Swedish Geotechnical Institute
Stockholm, Sweden

Roger Diaz de Cossio
Research Professor and Head of Graduate Division
National University of Mexico
Mexico City, Mexico

Ignacio Martin
Vice President
SACMAG International, Inc.
San Juan, Puerto Rico

Review of Design Criteria for Tied Reinforced Concrete Columns

Ignacio Martin
Vice President
SACMAG International, Inc.
San Juan, Puerto Rico

J. G. MacGregor
Associate Professor of Civil Engineering
University of Alberta
Edmonton, Alberta, Canada

(Continued)

Capacity of Restrained Eccentrically Loaded Long Columns

Alfred L. Parme
Principal Engineer
Advanced Engineering Group
Portland Cement Association
Chicago, Illinois

An Investigation of the Long Concrete Column in a Frame Subjected to Lateral Load

John E. Breen
Assistant Professor of Civil Engineering
Phil M. Ferguson
Professor of Civil Engineering
University of Texas
Austin, Texas

NOTES

RESEARCH SESSION

2:00 p.m. — 5:00 p.m.

Gold Ballroom

This annual open meeting of ACI Committee 115, Research, differs from general sessions in that the information is not released for publication. Request is made that the proceedings be regarded as CONFIDENTIAL.

CHAIRMAN

William A. Cordon
(Chairman, ACI Committee 115)
Associate Professor of Civil and Irrigation Engineering
Utah State University
Logan, Utah

Stephen J. Chamberlin
(Secretary, ACI Committee 115)
Professor of Theoretical and Applied Mechanics
Iowa State University
Ames, Iowa

Physical Factors Influencing Resistance of Concrete to Deicing Agents

Ward R. Malisch
Research Assistant
Department of Civil Engineering
University of Illinois
Urbana, Illinois

Strength of Plain Concrete under High Triaxial Compressive Stresses

Roger M. Zimmerman
Assistant Professor of Civil Engineering
New Mexico State University
University Park, New Mexico
James Chinn
Professor of Civil Engineering
University of Colorado
Boulder, Colorado

Very High Strength Concrete

Paul Klieger
Manager, Applied Research Section
Portland Cement Association
Research and Development Laboratories
Skokie, Illinois

Volume Changes of Paste and Concrete from Time Zero to Seven Days

Floyd O. Slate
Associate Professor of Engineering Materials
Cornell University
Ithaca, New York

(Continued)

<p>Ring Test for Determining the Tensile Strength of Concrete</p>	<p>V. M. Malhotra Senior Scientific Officer Construction Materials Section Mineral Processing Division</p> <p>N. G. Zoldners Head, Construction Materials Section Mineral Processing Division</p> <p>H. M. Woodrooffe Supervisor, Industrial Minerals Sub-Divisions Canada Department of Mines and Technical Surveys, Mines Branch Ottawa, Ontario</p>
<p>Bond Strength in Lightweight Concrete</p>	<p>J. W. Baldwin, Jr. Associate Professor</p> <p>Adrian Pauw Chairman, Department of Civil Engineering University of Missouri Columbia, Missouri</p>
<p>Fundamental Study of Bond between Steel and Expanding and Contracting Concrete</p>	<p>Colin B. Brown Assistant Professor of Civil Engineering University of California Berkeley, California</p>
<p>Study of Stress Redistribution in Concrete Members Using Birefringent Coatings</p>	<p>Robert J. Brungraber Assistant Professor of Civil Engineering Princeton University Princeton, New Jersey</p>
<p>Tests of Columns with Special Large Sized Deformed Bars</p>	<p>Richard C. Elstner Partner Wiss, Janney, Elstner and Associates Des Plaines, Illinois</p>
<p>Tests of Slender Reinforced Concrete Columns Bent in Double Curvature</p>	<p>Ignacio Martin Research Professor</p> <p>Elmer Olivieri-Cintrón Associate Professor of Engineering University of Puerto Rico Mayaguez, Puerto Rico</p>

SAN FRANCISCO COMMITTEES

GENERAL CHAIRMAN

S. D. BURKS

SECRETARY-TREASURER

W. E. MOULTON

FINANCE COMMITTEE

C. F. MORAN, *Chairman*

ENTERTAINMENT COMMITTEE

R. A. NIEMAN, *Chairman*

HOUSING COMMITTEE

Jay S. SIMONS, *Chairman*

EDUCATIONAL COMMITTEE

MILOS POLIVKA, *Chairman*

MEMBERSHIP COMMITTEE

PAUL R. STODOLA, *Chairman*

EXHIBITS-DISPLAYS COMMITTEE

H. L. McFALLS, *Chairman*

TRANSPORTATION COMMITTEE

L. L. MAYFIELD, *Chairman*

PUBLIC RELATIONS COMMITTEE

J. R. TRAYLER, *Chairman*

LADIES PROGRAM COMMITTEE

Mrs. MARIAN BURKS, *Chairman*

LADIES PROGRAM

Your Hospitality Suite is located on the 2nd floor of the hotel in Suite 240. It will be open at 9:00 A.M. daily, March 1 through 4, with morning coffee until 10:30 A.M. You are urged to use the Hospitality Suite as a "get-acquainted" center, to register there for the events which are planned for you, and to use it as a rendezvous to meet friends for personal shopping, etc.

Monday, March 1

9:00 a.m. Registration and Get-acquainted Coffee in Hospitality Suite

Tuesday, March 2

9:00 a.m. Registration and Get-Acquainted Coffee in Hospitality Suite

11:00 a.m. Buses leave Montgomery Street entrance for luncheon at Ondine's Restaurant across the Bay in Sausalito, compliments of the Local Committee. After luncheon, personal shopping is available in the quaint shops of this popular artist's colony. Buses will return to the hotel at 4:00 P.M.

6:30 p.m. Cocktail party, Gold Ballroom, compliments of the Local Committee

Wednesday, March 3

9:00-10:30 a.m. Coffee Hour, Hospitality Suite

12:15 p.m. Awards Luncheon in the Ralston Room. Ladies invited. \$4.75 per person

6:00-8:00 p.m. Wine Tasting party in the Ralston Room, compliments of the Local Committee and the Almaden Vineyards

Thursday, March 4

9:00-10:30 a.m. Coffee Hour, Hospitality Suite

1:00 p.m. Buses leave the Montgomery Street entrance for a complimentary 3-hour sightseeing tour of San Francisco.

LADIES COMMITTEE

MRS. S. D. BURKS, *Chairman*
 MRS. L. H. TUTHILL
 MRS. WARREN SCOTT
 MRS. J. R. TRAYLER
 MRS. C. F. MORAN
 MRS. R. A. NIEMAN

ACI DOOR PRIZE CARD

To qualify for daily door prize drawings, visit the Technical-Educational Exhibits and have card rubber-stamped with corresponding booth numbers at each exhibit booth. Deposit card in Door Prize Drawing Box at registration desk. You need not be present at drawings to win, but give complete identification below.

1	2	3	4	5
6	7	8-9	10	11-12
13	14	15	16	17
18-19	20	21-22	23	24
25	26	27-28	29-30	31
32	33-34	35	36-37	38
				39

Name _____

Home Address _____

Hotel & Room No. _____

EXHIBIT HOURS

Mon., Mar. 1—2:00 p.m.-6:00 p.m. Wed., Mar. 3—10:00 a.m.-6:00 p.m.
 Tues., Mar. 2—10:00 a.m.-6:00 p.m. Thurs., Mar. 4—9:00 a.m.-2:30 p.m.

SAN FRANCISCO CONVENTION EXHIBITORS

The Technical-Educational Exhibits hold the answer to your concrete design-construction problems. Visit the Exhibits daily to find out what materials, equipment and services can help you—and at the same time qualify for valuable door prizes.

Booth No(s)

- | | |
|-------|---|
| 1 | Edoco Technical Products, Inc., Long Beach, Calif. |
| 2 | Pittsburgh Testing Laboratory, Pittsburgh, Pa. |
| 3 | Stressteel Corporation, Wilkes Barre, Pa. |
| 4 | The Prescon Corporation, Corpus Christi, Tex. |
| 5 | Textured Coatings of America, Inc., Los Angeles, Calif. |
| 6 | Erico Products, Inc., Cleveland, O. |
| 7 | Warner Construction Corp., Los Angeles, Calif. |
| 8-9 | Bethlehem Steel Corp., Bethlehem, Pa. |
| 10 | Western Concrete Structures Co., Inc., Gardena, Calif. |
| 11-12 | Sika Chemical Corp., Passaic, N. J. |
| 13 | True Gun-All Division, Detroit Tool & Engineering Co.,
Lebanon, Mo. |
| 14 | Marathon, Division of American Can Co., Neenah, Wis. |
| 15 | B. M. Heede California, Inc., South San Francisco, Calif. |
| 16 | Adhesive Engineering Co., San Carlos, Calif. |
| 17 | Gateway Erectors, Inc., Chicago, Ill. |
| 18-19 | Johns-Manville Corp., New York, N. Y. |
| 20 | Sonoco Products Co., Hartsville, S. C. |
| 21-22 | W. R. Grace & Co., Construction Materials Division,
Cambridge, Mass. |
| 23 | Northwest Lift Slab Co., Inc., Portland, Ore. |
| 24 | American Machine & Foundry Co., York, Pa. |
| 25 | United States Steel, Pittsburgh, Pa. |
| 26 | Calcium Chloride Institute, Washington, D. C. |
| 27-28 | Noble Co., Oakland, Calif. |
| 29-30 | Livermore Valley Producers, San Francisco, Calif. |
| 31 | Atlas Service Corp., Van Nuys, Calif. |
| 32 | Thermex Metallurgical, Inc., Lakehurst, N. J. |
| 33-34 | Crown Zellerbach Corp., Camas, Wash. |
| 35 | Vacuum Concrete Corp., Philadelphia, Pa., and
Gamma Enterprises, Inc., Sunnyvale, Calif. |
| 36-37 | The Master Builders Co., Cleveland, O. |
| 38 | Challenge-Cook Bros., Inc., Los Angeles, Calif. |
| 39 | Protex Industries Inc., Denver, Colo. |

EXHIBIT HOURS

Monday, March 1—2:00 p.m. - 6:00 p.m.

Tuesday, March 2—10:00 a.m. - 6:00 p.m.

Wednesday, March 3—10:00 a.m. - 6:00 p.m.

Thursday, March 4—9:00 a.m. - 2:30 p.m.